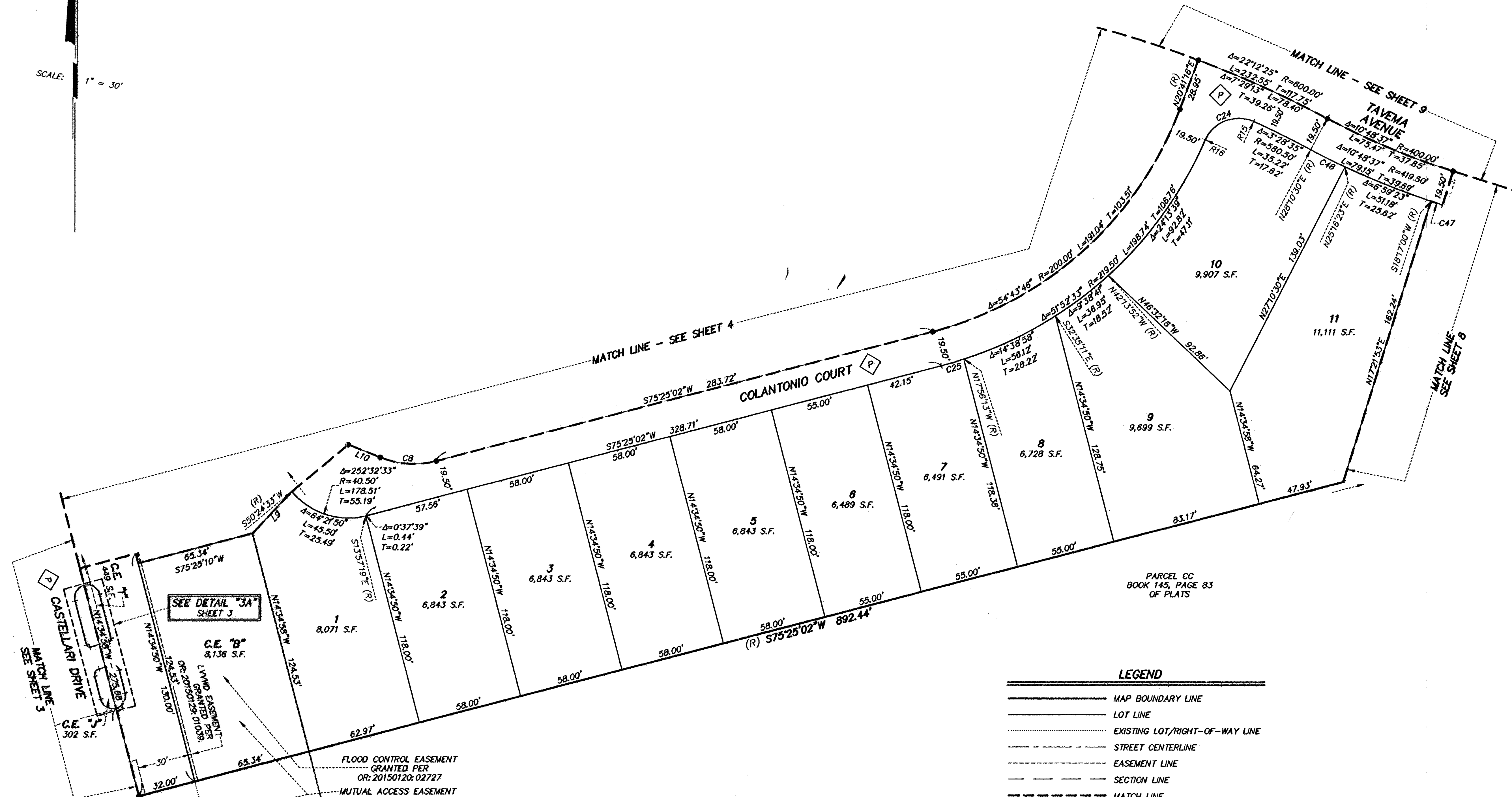


FINAL MAP OF SUMMERLIN VILLAGE 23B PARCEL BB – PHASE 1

A COMMON-INTEREST COMMUNITY

BEING A SUBDIVISION OF A PORTION OF PARCEL BB AS SHOWN IN BOOK 145, PAGE 95 OF PLATS
ON FILE IN THE CLARK COUNTY, NEVADA RECORDER'S OFFICE, LYING WITHIN SECTION 27,
TOWNSHIP 20 SOUTH, RANGE 59 EAST, M.D.M., CITY OF LAS VEGAS, CLARK COUNTY, NEVADA

SCALE: 1" = 30'



PARCEL CC
BOOK 145, PAGE 83
OF PLATS

LEGEND

- MAP BOUNDARY LINE
- LOT LINE
- EXISTING LOT/RIGHT-OF-WAY LINE
- STREET CENTERLINE
- EASEMENT LINE
- SECTION LINE
- MATCH LINE
- ⊙ FOUND MONUMENT AS DESCRIBED
- SET TYPE III MONUMENT, STAMPED "PLS 11174" WITH TYPE IV-A MONUMENT SET IN TOP OF CURB
- C1 CURVE NUMBER (SEE SHEET 10)
- L1 LINE SEGMENT NUMBER (SEE SHEET 10)
- (R) RADIAL LINE OR BEARING
- R1 TABLED RADIAL BEARING (SEE SHEET 10)
- OR: OFFICIAL RECORDS, CLARK COUNTY, NEVADA
- 8 LOT NUMBER (TOTAL LOTS = 92)
- C.E. "B" COMMON ELEMENT DESIGNATION (TOTAL C.E.'S = 10)
- S.F. SQUARE FEET
- PRIVATE SIDEWALK/PEDESTRIAN ACCESS EASEMENT GRANTED PER THIS PLAT
- Ⓟ PRIVATE STREET, PUBLIC SEWER EASEMENT, PUBLIC DRAINAGE EASEMENT AND PUBLIC UTILITY EASEMENT TO BE PRIVATELY MAINTAINED 3.44 ACRES

NOTES:
1. ALL REAR LOT CORNERS SHALL BE SET WITH A NAIL AND ALUMINUM DISC ON THE BLOCK WALLS AND ALL FRONT LOT CORNERS SHALL BE WITNESSED BY A SAW-CUT IN THE TOP OF CURB ON THE PROLONGATION OF THE SIDE LOT LINES.
2. ALL COMMON ELEMENT LOTS SHALL HAVE PRIVATE PEDESTRIAN ACCESS EASEMENTS GRANTED PER THIS PLAT AND WILL BE PRIVATELY MAINTAINED.

FLOOD CONTROL EASEMENT GRANTED PER OR: 20150120: 02727
MUTUAL ACCESS EASEMENT GRANTED PER OR: 20150120: 02727
ACCESS EASEMENT GRANTED PER OR: 20140620: 02284. SEE DETAIL 3B ON SHEET 5

SEE DETAIL "3A" SHEET 3

