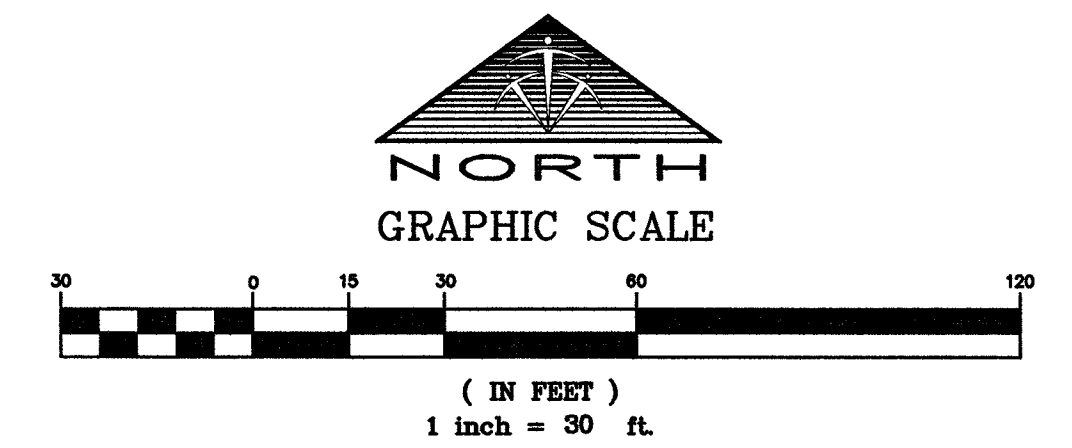
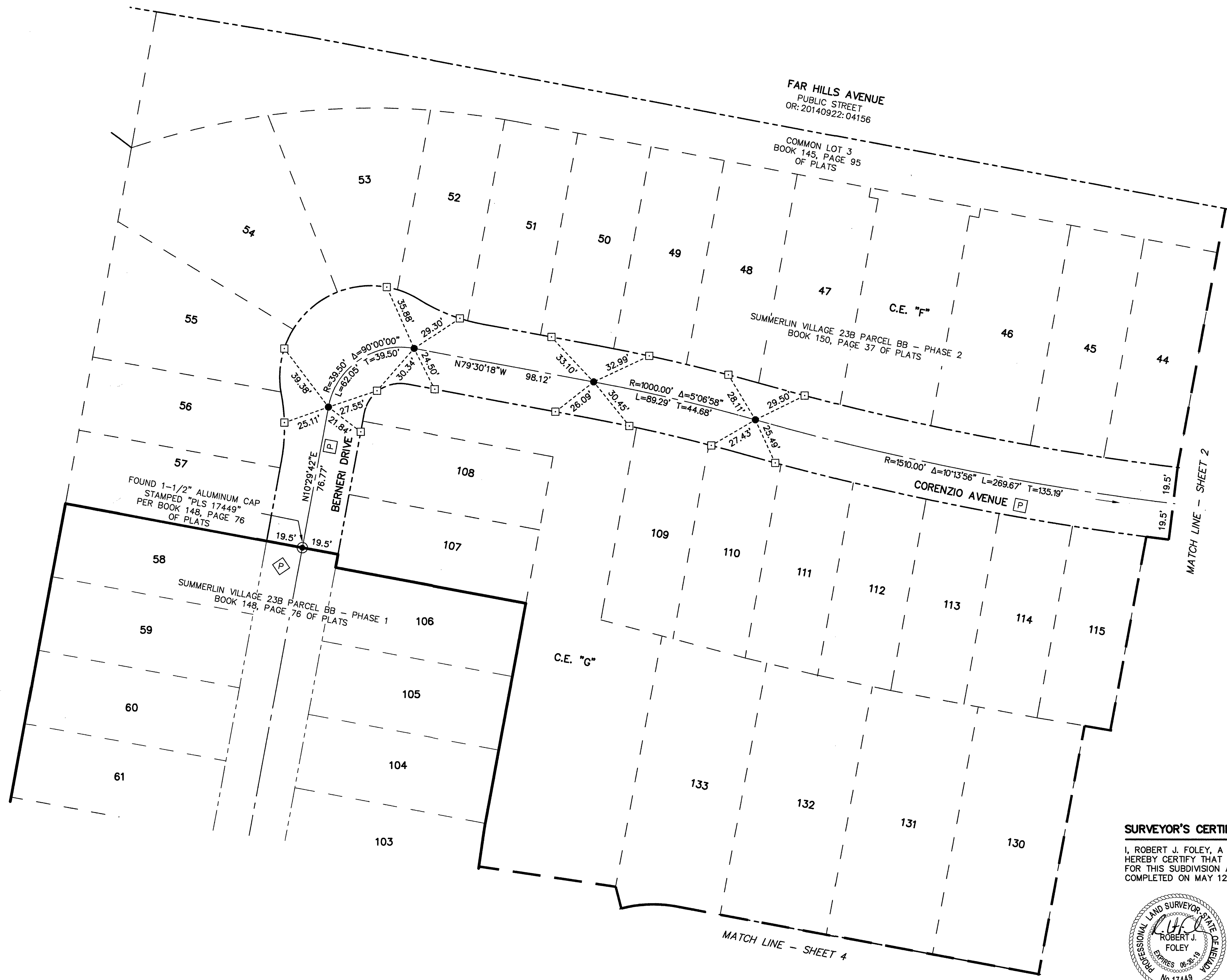


# MONUMENT TIE MAP SUMMERLIN VILLAGE 23B PARCEL BB - PHASE 2

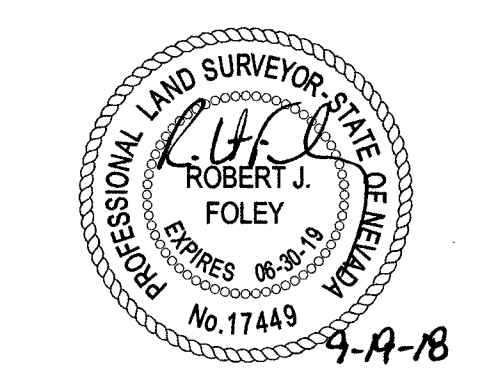
AS SHOWN BY MAP THEREOF ON FILE IN THE CLARK COUNTY RECORDER'S OFFICE IN BOOK 150, PAGE 37 OF PLATS,  
LYING WITHIN SECTION 27, TOWNSHIP 20 SOUTH, RANGE 59 EAST, M.D.M.,  
CITY OF LAS VEGAS, CLARK COUNTY, NEVADA



**LEGEND**

	BOUNDARY LINE
	ASSESSOR'S PARCEL LINE
	RIGHT-OF-WAY LINE
	STREET CENTERLINE
	TIE DISTANCE LINE
	MATCH LINE
	FOUND MONUMENT AS DESCRIBED
	SET TYPE III MONUMENT STAMPED "PLS 17449"
	SET TYPE IV-A REFERENCE MONUMENT STAMPED "PLS 17449"
	LOT NUMBER
	PRIVATE STREET CREATED PER BOOK 150, PAGE 37 OF PLATS
	PRIVATE STREET CREATED PER BOOK 148, PAGE 76 OF PLATS
	COMMON ELEMENT

**SURVEYOR'S CERTIFICATE**  
I, ROBERT J. FOLEY, A PROFESSIONAL LAND SURVEYOR LICENSED IN THE STATE OF NEVADA, DO HEREBY CERTIFY THAT THE MONUMENTS HAVE BEEN SET ACCORDING TO THE RECORDED FINAL MAP FOR THIS SUBDIVISION AND THE TIE DISTANCES ESTABLISHED AS SHOWN HEREON. THIS SURVEY WAS COMPLETED ON MAY 12, 2018.



ROBERT J. FOLEY  
PROFESSIONAL LAND SURVEYOR  
NEVADA LICENSE NO. 17449

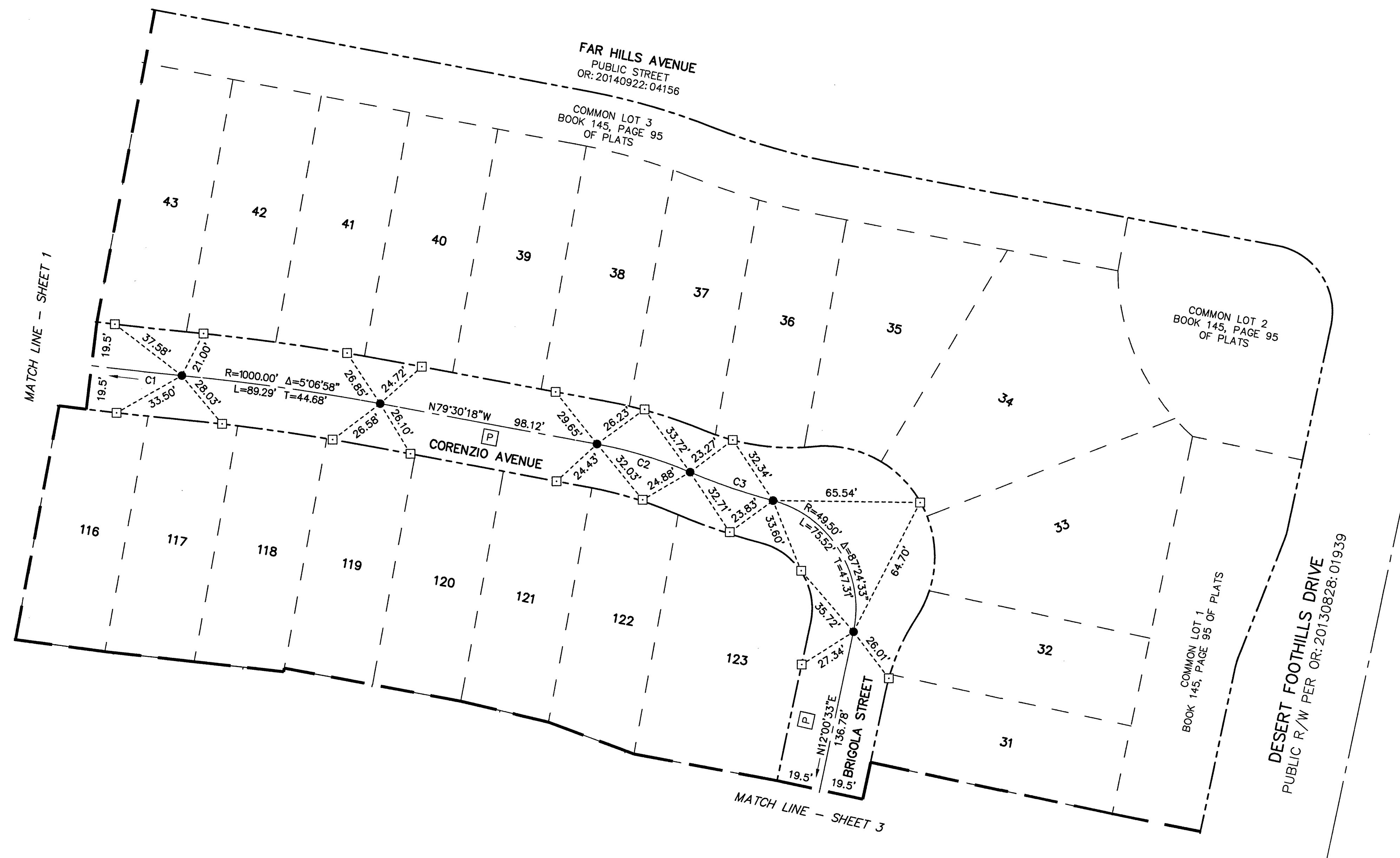
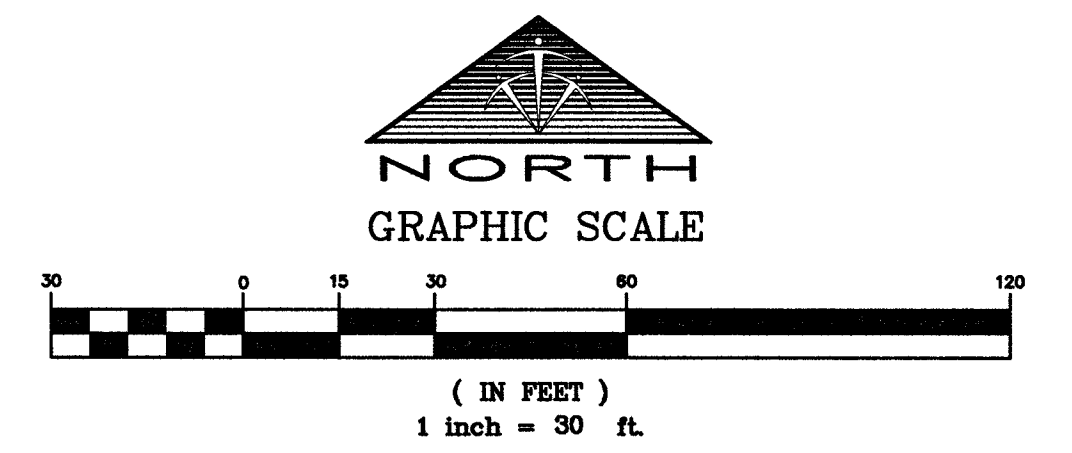
**BASIS OF BEARINGS**  
NORTH 79°30'18" WEST, BEING THE BEARING OF THE CENTERLINE OF SAVERIO AVENUE AS SHOWN ON THE FINAL MAP OF "SUMMERLIN VILLAGE 23B PARCEL BB - PHASE 2" ON FILE IN THE CLARK COUNTY, NEVADA, RECORDER'S OFFICE IN BOOK 150, PAGE 37 OF PLATS.

**TRI-CORE**  
**SURVEYING, LLC**  
6761 WEST CHARLESTON BLVD.  
LAS VEGAS, NEVADA 89146  
TEL (702) 821-1554 FAX (702) 870-4378

JOB# 15015.0008

# MONUMENT TIE MAP SUMMERLIN VILLAGE 23B PARCEL BB - PHASE 2

AS SHOWN BY MAP THEREOF ON FILE IN THE CLARK COUNTY RECORDER'S OFFICE IN BOOK 150, PAGE 37 OF PLATS,  
LYING WITHIN SECTION 27, TOWNSHIP 20 SOUTH, RANGE 59 EAST, M.D.M.,  
CITY OF LAS VEGAS, CLARK COUNTY, NEVADA

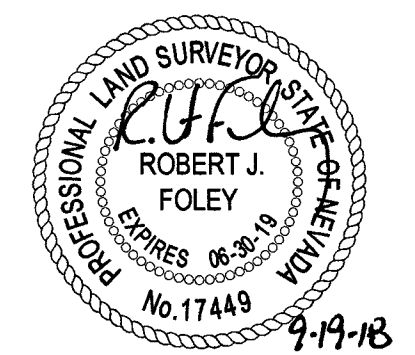


**LEGEND**

- BOUNDARY LINE
- ASSESSOR'S PARCEL LINE
- RIGHT-OF-WAY LINE
- STREET CENTERLINE
- TIE DISTANCE LINE
- MATCH LINE
- FOUND MONUMENT AS DESCRIBED
- SET TYPE III MONUMENT STAMPED "PLS 17449"
- SET TYPE IV-A REFERENCE MONUMENT STAMPED "PLS 17449"
- LOT NUMBER
- PRIVATE STREET CREATED PER BOOK 150, PAGE 37 OF PLATS
- PRIVATE STREET CREATED PER BOOK 148, PAGE 76 OF PLATS
- COMMON ELEMENT

CURVE TABLE				
CURVE	DELTA	RADIUS	LENGTH	TANGENT
C1	10°13'56"	1510.00'	269.67'	135.19'
C2	12°25'37"	200.00'	43.38'	21.77'
C3	8°19'19"	269.50'	39.14'	19.61'

**TRI-CORE  
SURVEYING, LLC**  
8761 WEST CHARLESTON BLVD.  
LAS VEGAS, NEVADA 89148  
TEL (702) 821-1554 FAX (702) 870-4378

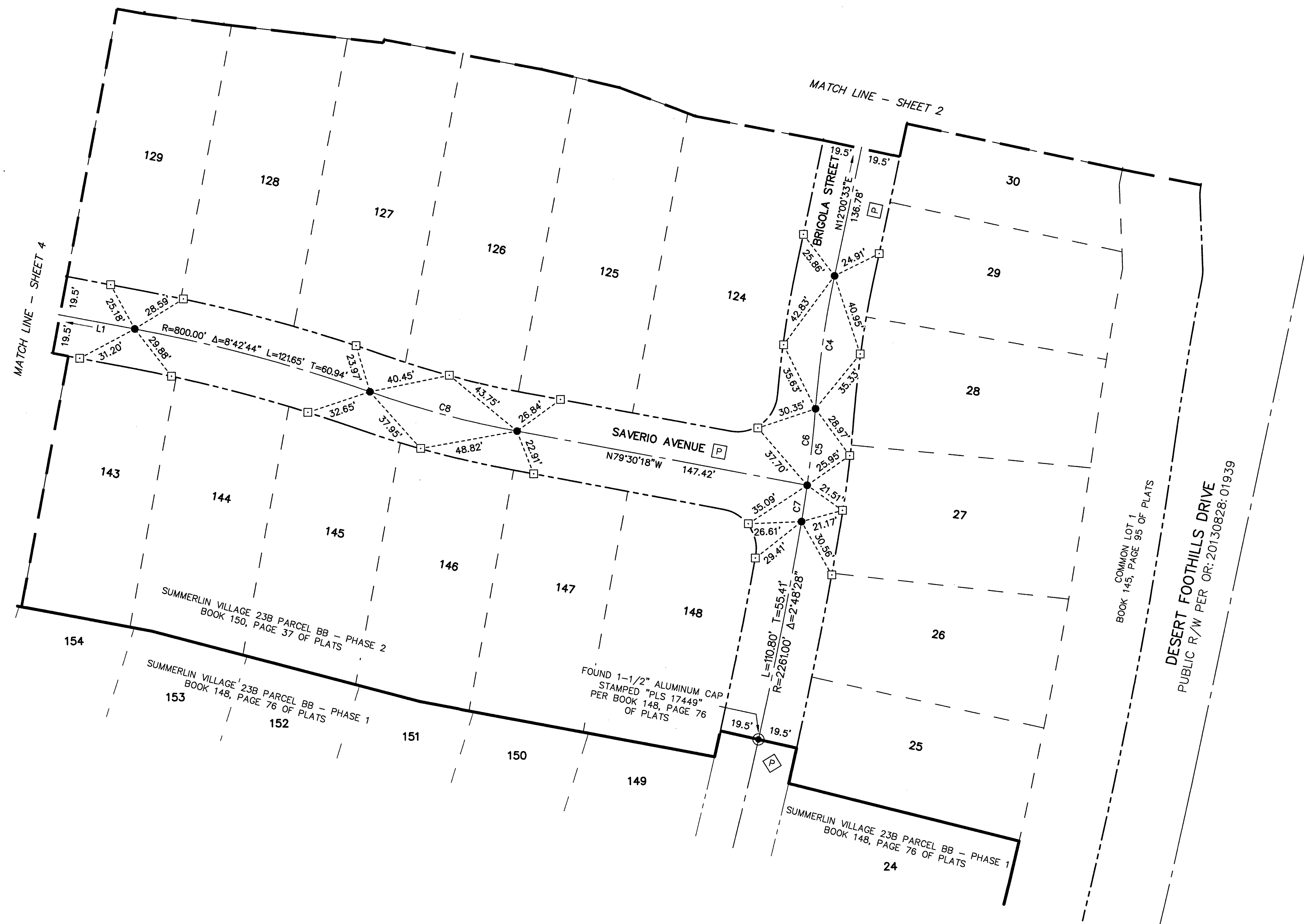
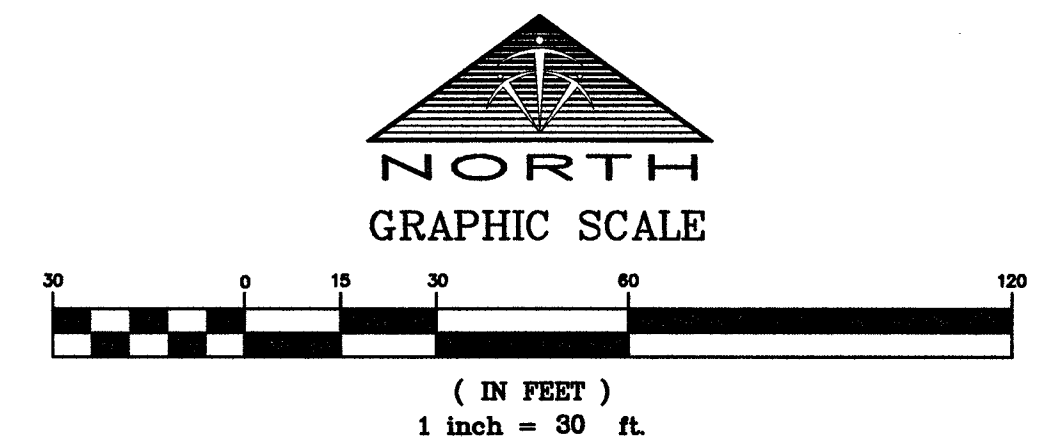


JOB# 15015.0008

AA  
SHEET 2 OF 4

# MONUMENT TIE MAP SUMMERLIN VILLAGE 23B PARCEL BB - PHASE 2

AS SHOWN BY MAP THEREOF ON FILE IN THE CLARK COUNTY RECORDER'S OFFICE IN BOOK 150, PAGE 37 OF PLATS,  
LYING WITHIN SECTION 27, TOWNSHIP 20 SOUTH, RANGE 59 EAST, M.D.M.,  
CITY OF LAS VEGAS, CLARK COUNTY, NEVADA

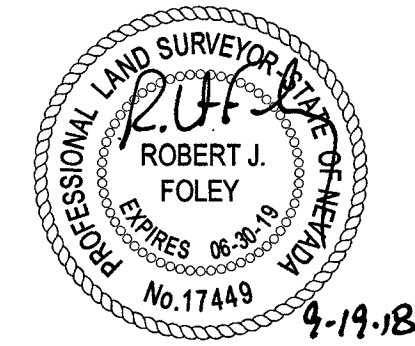


- LEGEND**
- BOUNDARY LINE
  - - - ASSESSOR'S PARCEL LINE
  - - - RIGHT-OF-WAY LINE
  - - - STREET CENTERLINE
  - - - TIE DISTANCE LINE
  - - - MATCH LINE
  - ⊙ FOUND MONUMENT AS DESCRIBED
  - SET TYPE III MONUMENT STAMPED "PLS 17449"
  - SET TYPE IV-A REFERENCE MONUMENT STAMPED "PLS 17449"
  - 1 LOT NUMBER
  - P PRIVATE STREET CREATED PER BOOK 150, PAGE 37 OF PLATS
  - ◇ PRIVATE STREET CREATED PER BOOK 148, PAGE 76 OF PLATS
  - C.E. COMMON ELEMENT

LINE TABLE		
LINE	BEARING	LENGTH
L1	N79°30'18"W	235.74'

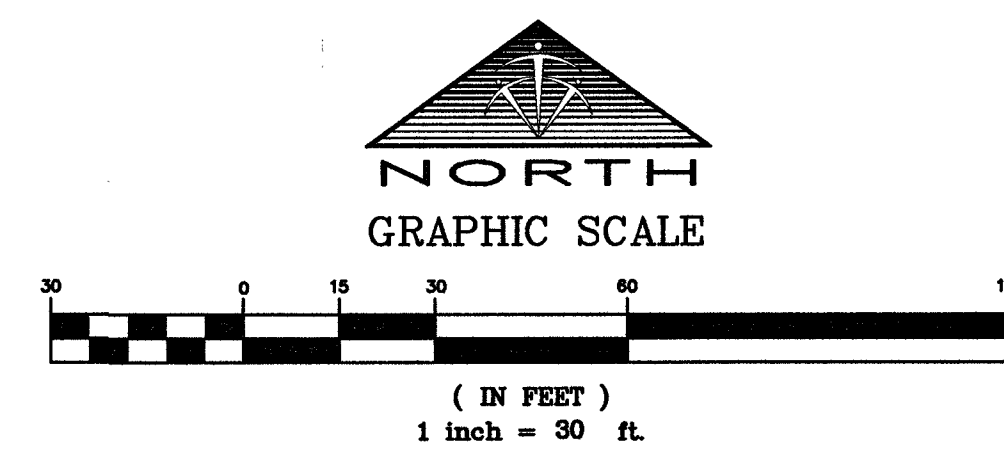
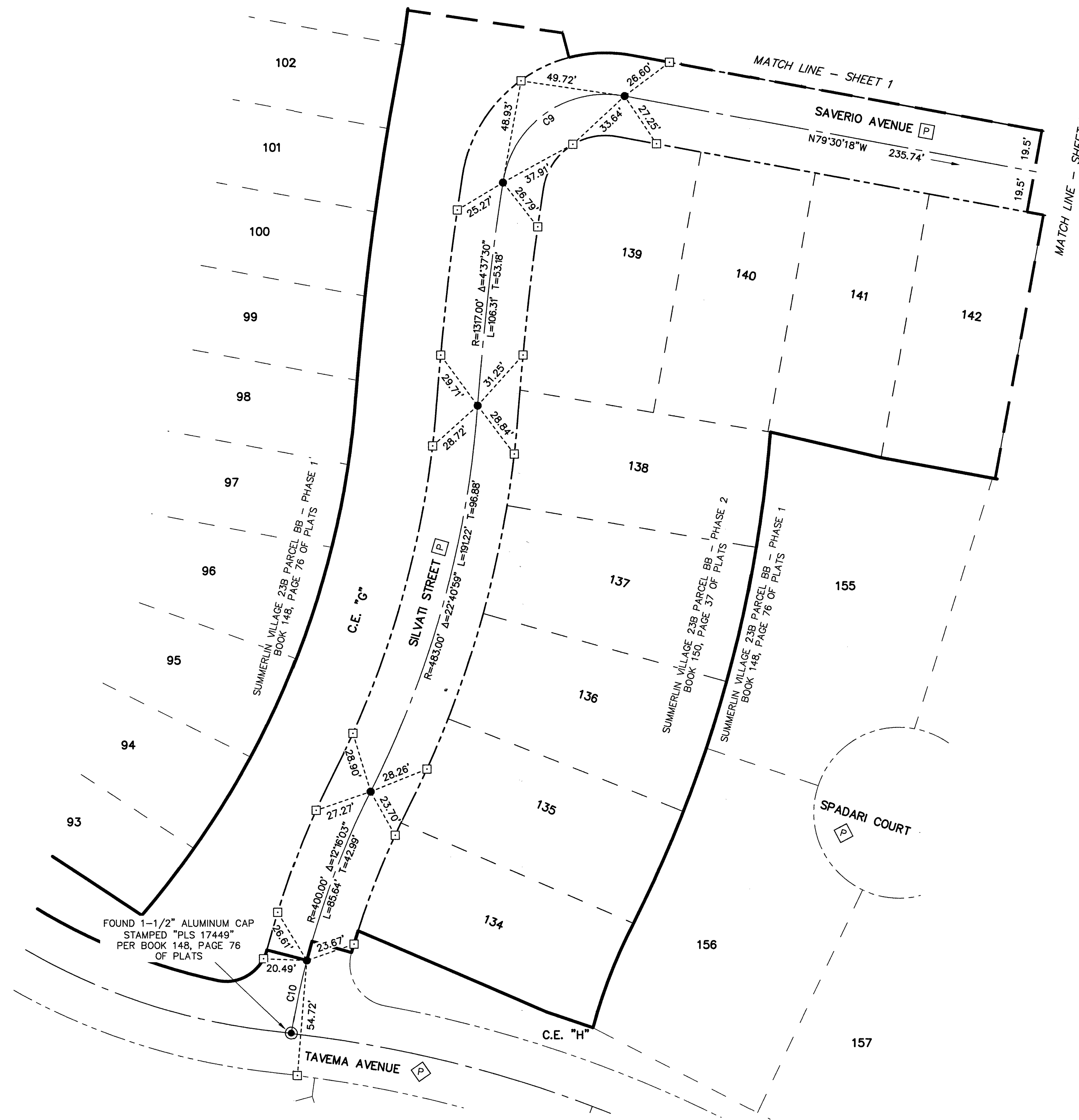
CURVE TABLE				
CURVE	DELTA	RADIUS	LENGTH	TANGENT
C4	7°40'51"	500.00'	67.03'	33.56'
C5	5°24'46"	600.00'	56.68'	28.36'
C6	3°40'26"	600.00'	38.47'	19.24'
C7	1°44'20"	600.00'	18.21'	9.11'
C8	8°42'44"	500.00'	76.03'	38.09'

**TRI-CORE  
SURVEYING, LLC**  
8761 WEST CHARLESTON BLVD.  
LAS VEGAS, NEVADA 89148  
TEL (702) 821-1554 FAX (702) 870-4378



# MONUMENT TIE MAP SUMMERLIN VILLAGE 23B PARCEL BB - PHASE 2

AS SHOWN BY MAP THEREOF ON FILE IN THE CLARK COUNTY RECORDER'S OFFICE IN BOOK 150, PAGE 37 OF PLATS,  
LYING WITHIN SECTION 27, TOWNSHIP 20 SOUTH, RANGE 59 EAST, M.D.M.,  
CITY OF LAS VEGAS, CLARK COUNTY, NEVADA



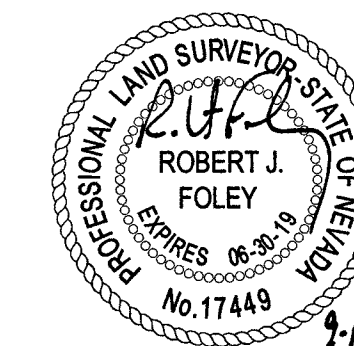
**LEGEND**

- BOUNDARY LINE
- - - ASSESSOR'S PARCEL LINE
- - - RIGHT-OF-WAY LINE
- - - STREET CENTERLINE
- - - TIE DISTANCE LINE
- MATCH LINE
- ⊙ FOUND MONUMENT AS DESCRIBED
- SET TYPE III MONUMENT STAMPED "PLS 17449"
- ⊠ SET TYPE IV-A REFERENCE MONUMENT STAMPED "PLS 17449"
- 1 LOT NUMBER
- ⊠ PRIVATE STREET CREATED PER BOOK 150, PAGE 37 OF PLATS
- ⊠ PRIVATE STREET CREATED PER BOOK 148, PAGE 76 OF PLATS
- C.E. COMMON ELEMENT

CURVE TABLE				
CURVE	DELTA	RADIUS	LENGTH	TANGENT
C9	91°37'02"	49.50'	79.15'	50.92'
C10	5°03'48"	400.00'	35.35'	17.69'

**TRI-CORE**  
SURVEYING, LLC  
6761 WEST CHARLESTON BLVD.  
LAS VEGAS, NEVADA 89146  
TEL (702) 821-1554 FAX (702) 870-4378

JOB# 15015.0008



AA  
SHEET 4 OF 4