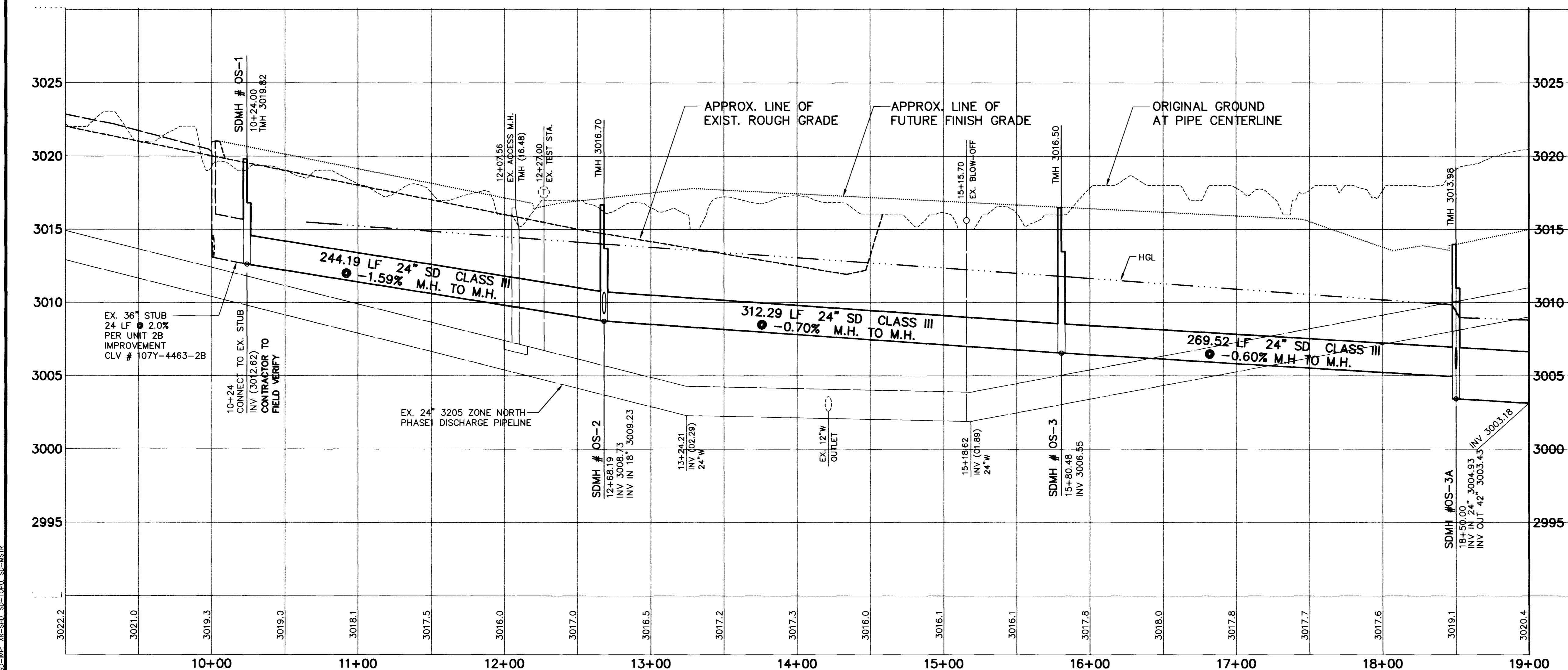


CONSTRUCTION NOTES

STORM DRAIN
INSTALL STORM DRAIN PIPES PER SUMMERLIN STD. U-19

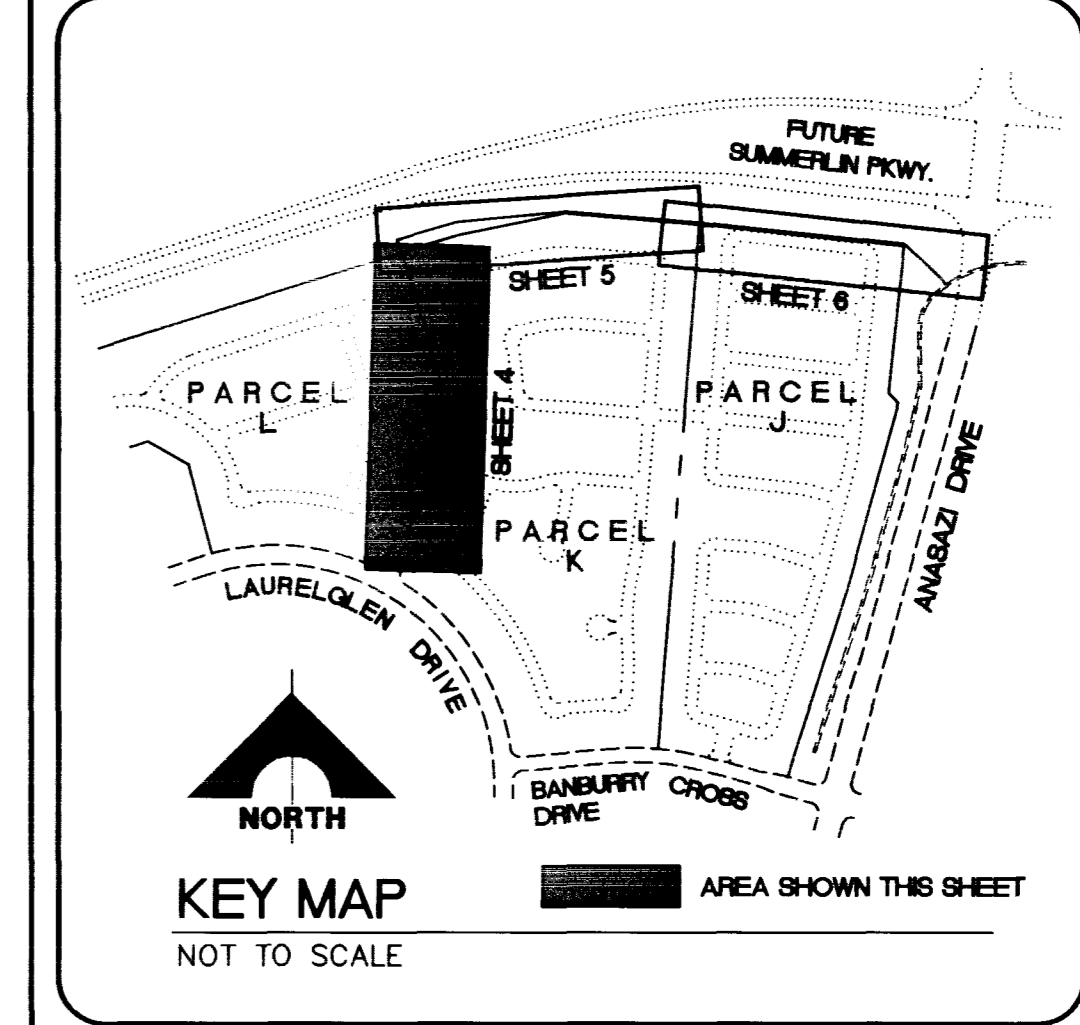
1 SD INSTALL STORM DRAIN MANHOLE (D-4) S

2 SD INSTALL STORM DRAIN MANHOLE (D-3) S



BENCHMARK
CITY OF LAS VEGAS BENCHMARK
OLV001954 RIVET & PLATE IN TOP OF CURB NW SIDE OF TOWN CENTER DRIVE & SOUTH CIRCLE ISLAND.
2725.923 NGVD 1929 DATUM
2728.37 NAVD 1988 DATUM (831.6074 M)
* 2726.19 SUMMERLIN DATUM

* THIS PROJECT BASED ON SUMMERLIN DATUM



RECOMMENDED	CHRYSTOPHER W. ANDERSON	DATE	10/21/11
P.E. NO.	5071	DATE	10/21/11
DESCRIPTION	SUMMERLIN VILLAGE 11/12 OFF-SITE DRAINAGE		
REV.	DATE	DESCRIPTION	DATE

FINAL SUBMITTAL

G.C. WALLACE, INC.
Engineering/Architecture
1555 SOUTH RAINBOW BLVD. LAS VEGAS, NEVADA 89102 (702) 363-1200
SUMMERLIN DIVISION: (702) 363-0991

SUMMERLIN VILLAGE 11/12 OFF-SITE DRAINAGE
PLAN & PROFILE
STA 10+00.00 TO 19+00.00

SHEET **4**
SHT 4 OF 7

JOB NO. 62011.218

C:\WORK\1112\UNIT-28\SD\SD-IMP.MXD Mon Jun 9 09:23:05 1997 BY LUFE

254

S.I.D. 707 PROJECT NO. 62

327-V246 100

