

FINAL MAP OF SUMMERLIN VILLAGE 11/12 CANYON VISTA

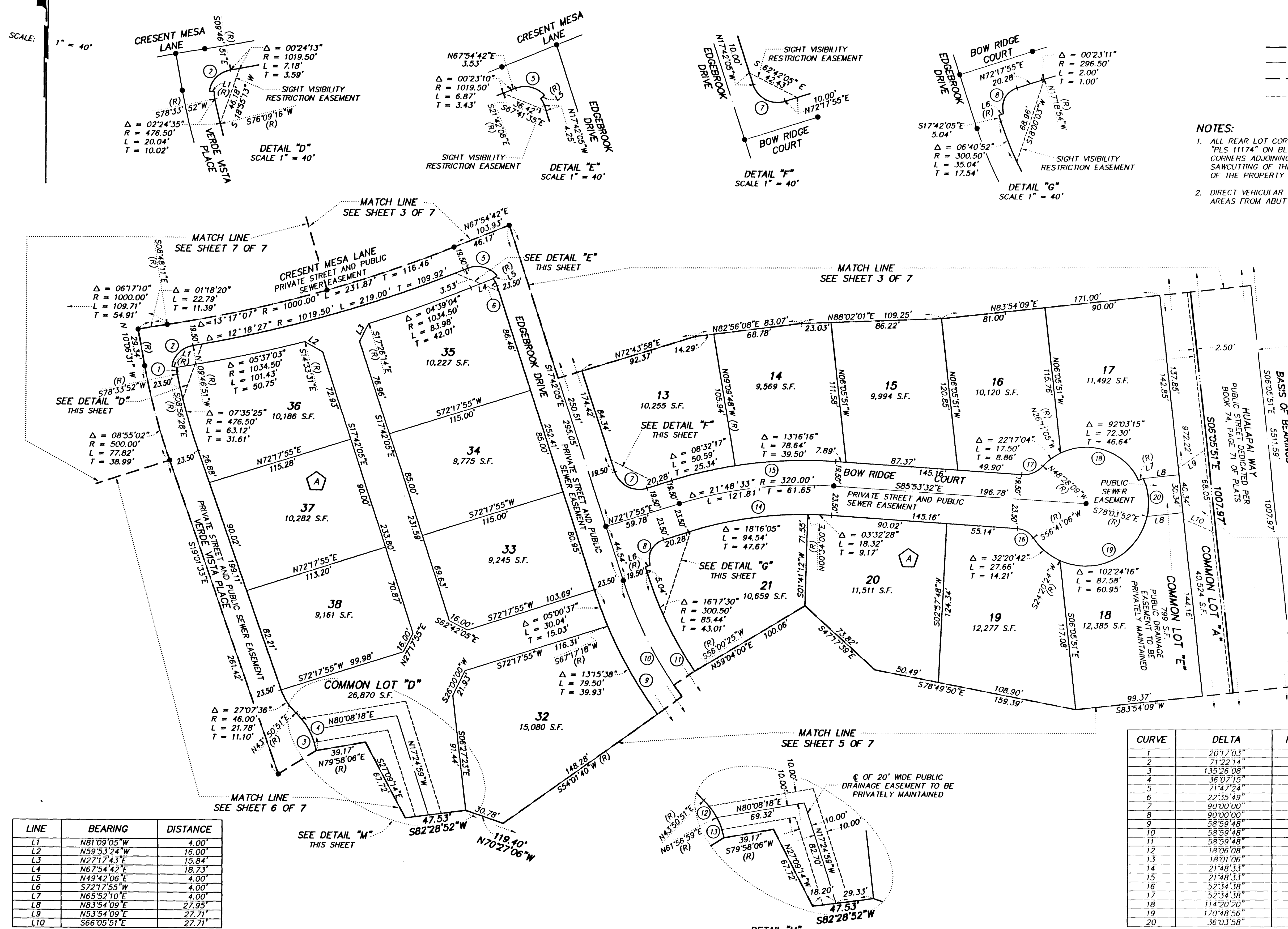
A PLANNED RESIDENTIAL COMMUNITY

BEING A SUBDIVISION OF LOT 3 AND COMMON LOT "D" IN BLOCK A OF "THE ARBORS AT SUMMERLIN VILLAGE 11/12 UNIT NO. 1B" AS SHOWN BY MAP THEREOF ON FILE IN BOOK 74, PAGE 71 OF PLATS IN THE CLARK COUNTY RECORDER'S OFFICE, CLARK COUNTY, NEVADA, LYING WITHIN SECTION 36, TOWNSHIP 20 SOUTH, RANGE 59 EAST, M.D.M., CITY OF LAS VEGAS, CLARK COUNTY, NEVADA

LEGEND

- SET 5/8" REBAR AND ALCAP STAMPED PLS 11174 W/ALUMINUM REFERENCE TIES IN TOP OF CURB (UNLESS OTHERWISE NOTED)
- 20 LOT NUMBER
TOTAL LOTS = 64
TOTAL COMMON LOTS = 11
- (A) BLOCK NUMBER
- (1) CURVE NUMBER
- L1 LINE SEGMENT NUMBER
- (R) RADIAL BEARING OR LINE
- SUBDIVISION BOUNDARY LINE
- STREET CENTERLINE
- - - MATCH LINE
- - - EASEMENT LINE

- NOTES:**
- ALL REAR LOT CORNERS SHALL BE SET WITH A NAIL AND TAG "PLS 11174" ON BLOCK WALLS AND ALL FRONT OR SIDE LOT CORNERS ADJOINING RIGHT-OF-WAY SHALL BE MARKED BY THE SAWCUTTING OF THE BACK OF CURBS ON THE PROLONGATION OF THE PROPERTY LINES.
 - DIRECT VEHICULAR ACCESS TO HUALAPAI WAY THROUGH COMMON AREAS FROM ADJUTING LOTS IS PROHIBITED.



LINE	BEARING	DISTANCE
L1	N81°09'05"W	4.00'
L2	N59°53'24"W	16.00'
L3	N27°17'43"E	15.84'
L4	N67°54'42"E	18.73'
L5	N49°42'06"E	4.00'
L6	S72°17'55"W	4.00'
L7	N65°52'10"E	4.00'
L8	N83°54'09"E	27.95'
L9	N53°54'09"E	27.71'
L10	S66°05'51"E	27.71'

CURVE	DELTA	RADIUS	LENGTH	TANGENT
1	207°03"	16.00'	5.66'	2.86'
2	71°22'4"	20.00'	24.91'	14.36'
3	135°26'08"	54.00'	127.65'	131.78'
4	36°07'15"	54.00'	34.04'	17.61'
5	71°47'24"	20.00'	25.06'	14.47'
6	22°35'49"	16.00'	6.31'	3.20'
7	90°00'00"	20.00'	31.42'	20.00'
8	90°00'00"	16.00'	25.13'	16.00'
9	58°59'48"	343.50'	353.70'	194.33'
10	58°59'48"	329.50'	329.50'	181.04'
11	58°59'48"	300.50'	309.42'	170.00'
12	18°06'08"	54.00'	17.06'	8.60'
13	18°01'06"	54.00'	16.98'	8.56'
14	21°48'33"	296.50'	112.86'	57.12'
15	21°48'33"	339.50'	129.23'	65.41'
16	52°34'38"	16.00'	14.68'	7.90'
17	52°34'38"	20.00'	18.35'	9.88'
18	114°20'20"	45.00'	89.80'	69.74'
19	170°48'56"	49.00'	146.08'	610.05'
20	36°03'58"	49.00'	30.84'	15.95'

S 4042

