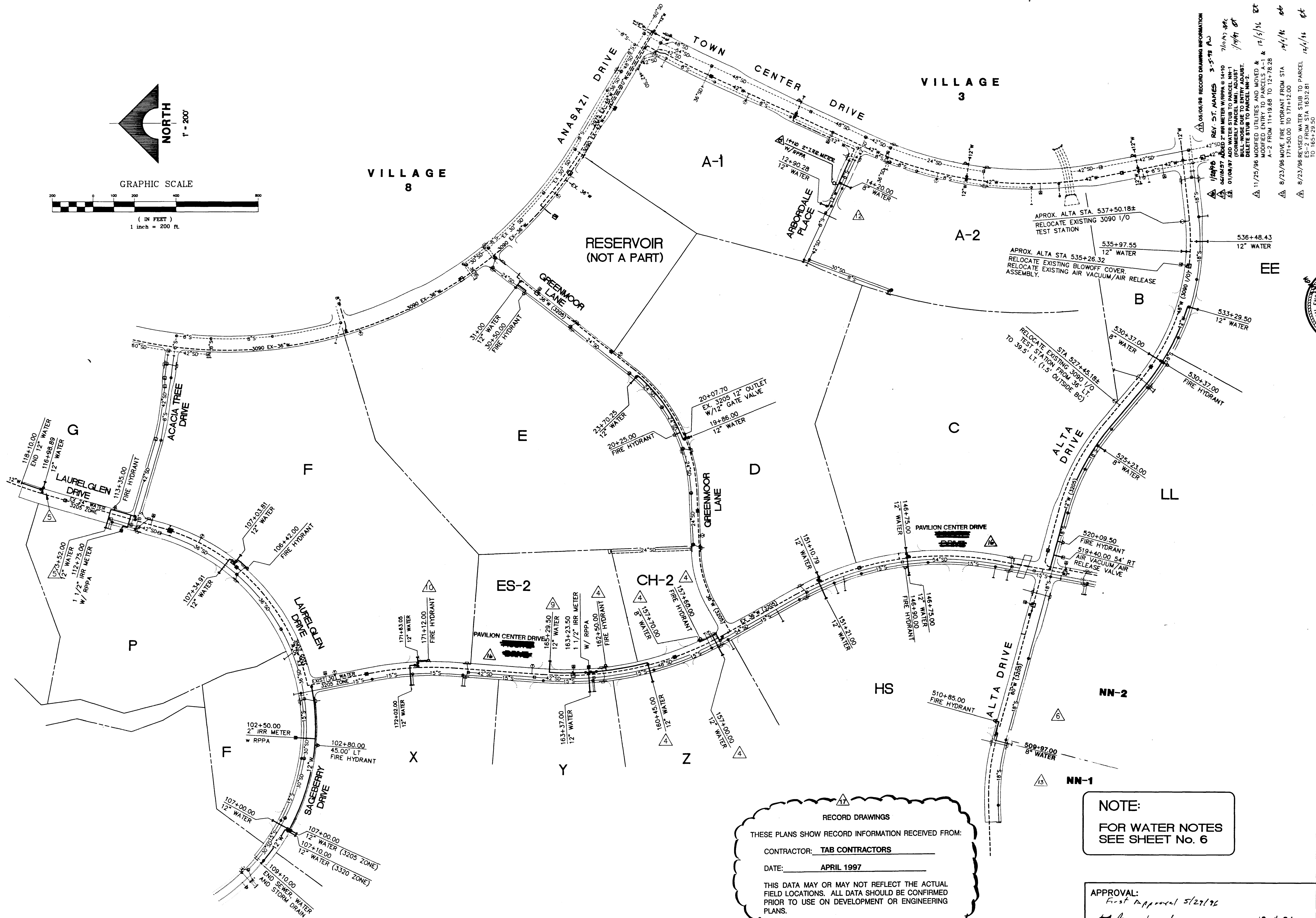
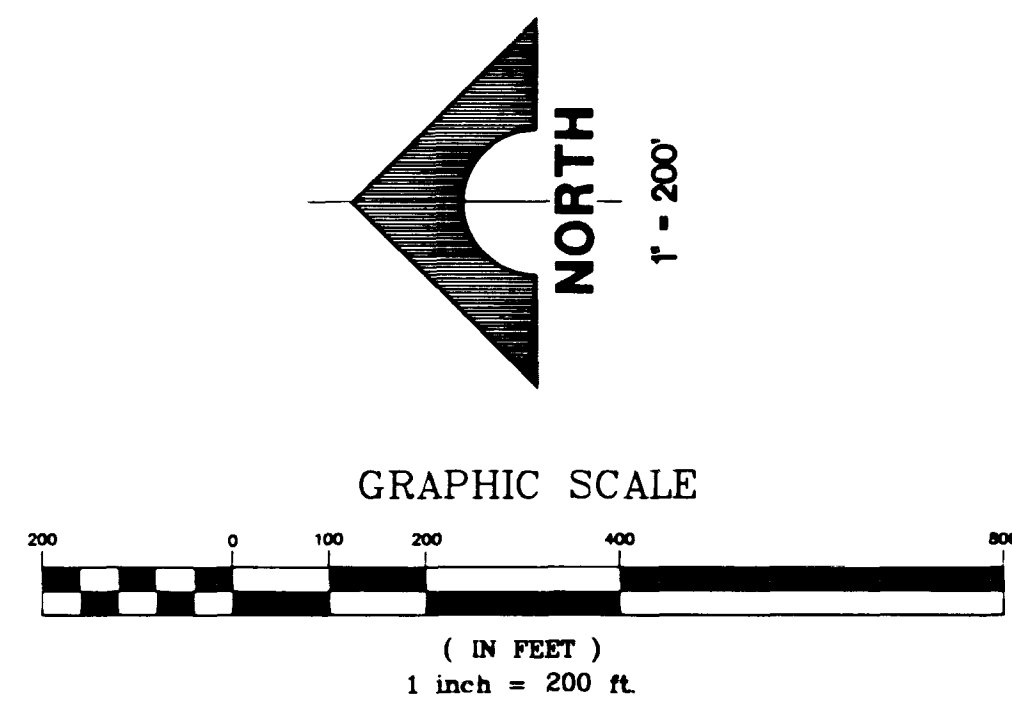


Xrefs: MSTR-UTIL.DWG

Drawing: C:\DWG\11-12\2A\2A-WATER.DWG

November 25, 1996 3:11:10 p.m.

JOB NO. 62011.212



RECORD DRAWINGS

THESE PLANS SHOW RECORD INFORMATION RECEIVED FROM:

CONTRACTOR: TAB CONTRACTORS

DATE: APRIL 1997

THIS DATA MAY OR MAY NOT REFLECT THE ACTUAL FIELD LOCATIONS. ALL DATA SHOULD BE CONFIRMED PRIOR TO USE ON DEVELOPMENT OR ENGINEERING PLANS.

**NOTE:**  
FOR WATER NOTES  
SEE SHEET No. 6

APPROVAL:  
*First Approval 5/27/96*  
*[Signature]*  
LAS VEGAS VALLEY WATER DISTRICT  
DATE: 12.4.96

RECORD DRAWING INFORMATION

NO.	DATE	DESCRIPTION
1/24/96	REV. ST. AMIES	3-5-78 A
01/08/97	ADD WATER STUB TO PARCEL NN-1	7/16/97 492
01/08/97	DELETE WATER STUB TO ENTRY ADJUST.	1/14/97 492
01/08/97	DELETE STUB TO PARCEL NN-2.	1/14/97 492
11/25/96	MODIFIED ENTRY TO PARCELS A-1 & A-2 FROM 11+19.66 TO 12+78.28	12/15/96 492
8/23/96	MOVE FIRE HYDRANT FROM STA 171+50.00 TO 171+12.00	12/15/96 492
8/23/96	REVISED WATER STUB TO PARCEL NN-1 TO 165+29.50	12/15/96 492
8/23/96	REVISED WATER STUB TO PARCEL NN-2 TO 165+29.50	12/15/96 492
8/23/96	REVISED WATER STUB TO H.S.	12/15/96 492
8/23/96	REVISED WATER STUB TO	12/15/96 492
8/23/96	REVISED WATER STUB TO	12/15/96 492
8/23/96	REVISED WATER STUB TO	12/15/96 492

RECOMMENDED  
CHRISTOPHER W. ANDERSON  
REGISTERED PROFESSIONAL ENGINEER  
STATE OF NEVADA  
NO. 5071

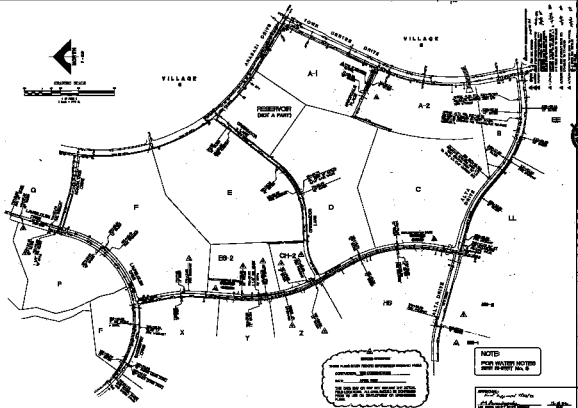
G.C. WALLACE, INC.  
Engineering/Architecture  
1535 SOUTH RAINBOW BLVD., LAS VEGAS, NEVADA 89102

NO.	DATE	DESCRIPTION	DATE	APPROVAL
1/24/96	12/15/96	REVISED WATER STUB TO PARCEL NN-1	12/15/96	492
1/24/96	12/15/96	REVISED WATER STUB TO	12/15/96	492
1/24/96	12/15/96	REVISED WATER STUB TO	12/15/96	492
1/24/96	12/15/96	REVISED WATER STUB TO	12/15/96	492

SUMMERLIN  
VILLAGE 11/12 THE ARBORS - UNIT 2A  
MASTER UTILITY WATER PLAN

SHEET  
**8**  
SHT 8 OF 65

FINAL SUBMITTAL



THESE PLANS SHOW THE LOCATION OF THE  
 PIPELINES, VALVES, AND CONNECTIONS.  
 THEY DO NOT SHOW THE EXACT LOCATION OF THE  
 PIPELINES, VALVES, AND CONNECTIONS IN THE  
 FIELD. THE EXACT LOCATION OF THE PIPELINES,  
 VALVES, AND CONNECTIONS IN THE FIELD  
 SHALL BE DETERMINED BY THE FIELD  
 ENGINEER.

**NOTE:**  
 FOR WATER NOTES  
 SEE SHEET No. 4

APPROVED: \_\_\_\_\_  
 DATE: \_\_\_\_\_  
 PROJECT NO. \_\_\_\_\_



NO.	DESCRIPTION
1	...
2	...
3	...
4	...
5	...
6	...
7	...
8	...
9	...
10	...

PROJECT NO. \_\_\_\_\_  
 SHEET NO. \_\_\_\_\_  
 TOTAL SHEETS \_\_\_\_\_  
 DATE: \_\_\_\_\_