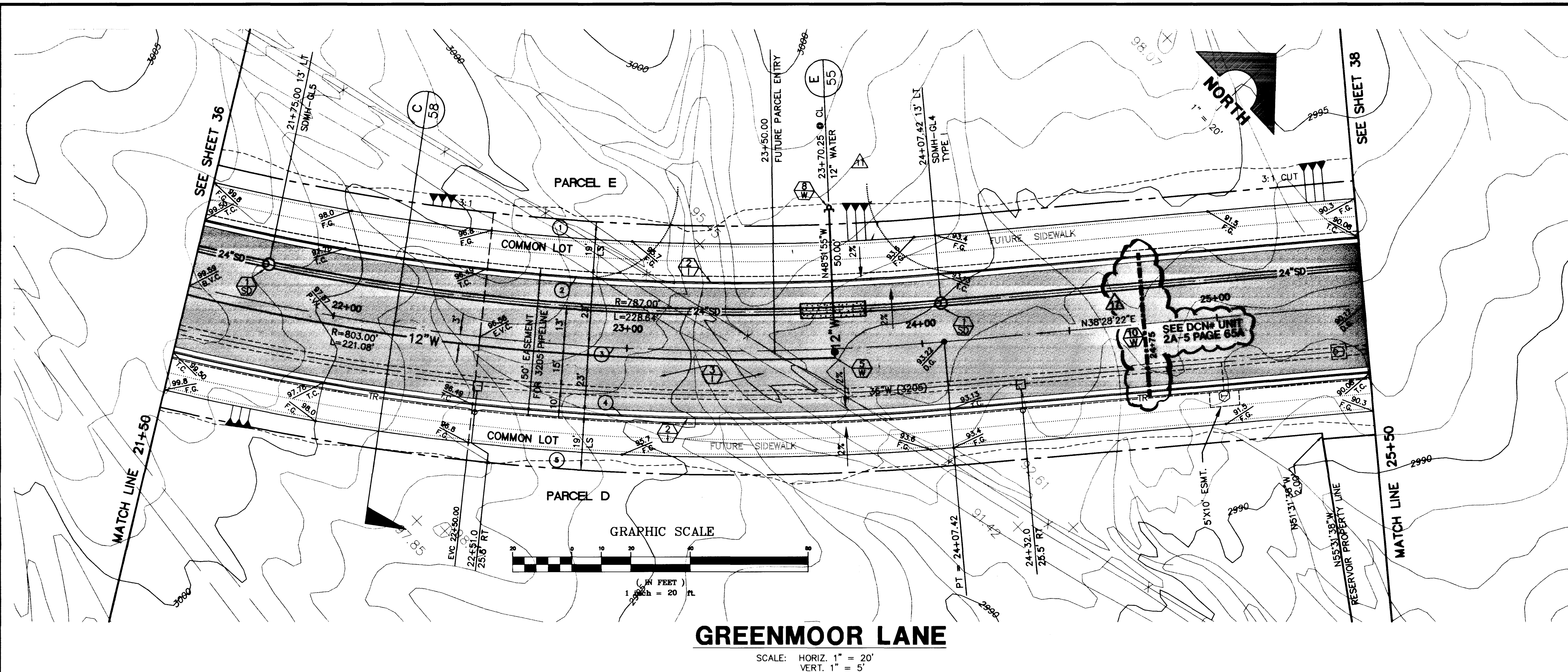


Xrefs: 0X-TOPG.DWG DXF-S-MS.DWG

September 17, 1996 8:11:10 a.m. Drawing: C:\DWG\VL11-12\UNIT-2A\DXF-S-4.DWG

JOB NO. 62011.212



CURVE DATA ① INDICATES CURVE NUMBER (THIS SHEET ONLY)

CURVE	DELTA	RADIUS	LENGTH	TANGENT
1	18°26'11"	758.00'	243.91'	123.02'
2	18°26'11"	777.00'	250.02'	128.10'
3	18°26'11"	800.00'	257.42'	129.83'
4	18°26'11"	823.00'	264.82'	133.57'
5	18°26'11"	842.00'	270.94'	136.65'

CONSTRUCTION NOTES

- IMPROVEMENTS**
- ① INSTALL "A" TYPE CURB (S-50 S)
 - ② INSTALL "L" TYPE CURB & GUTTER (S-47 S)
 - ③ INSTALL AC PAVEMENT PER SECTION SHEETS 56, 57, & 58
 - ④ INSTALL CROSSWALK (S-78 S)
 - ⑤ INSTALL DEPRESSED CURB (S-75 S)

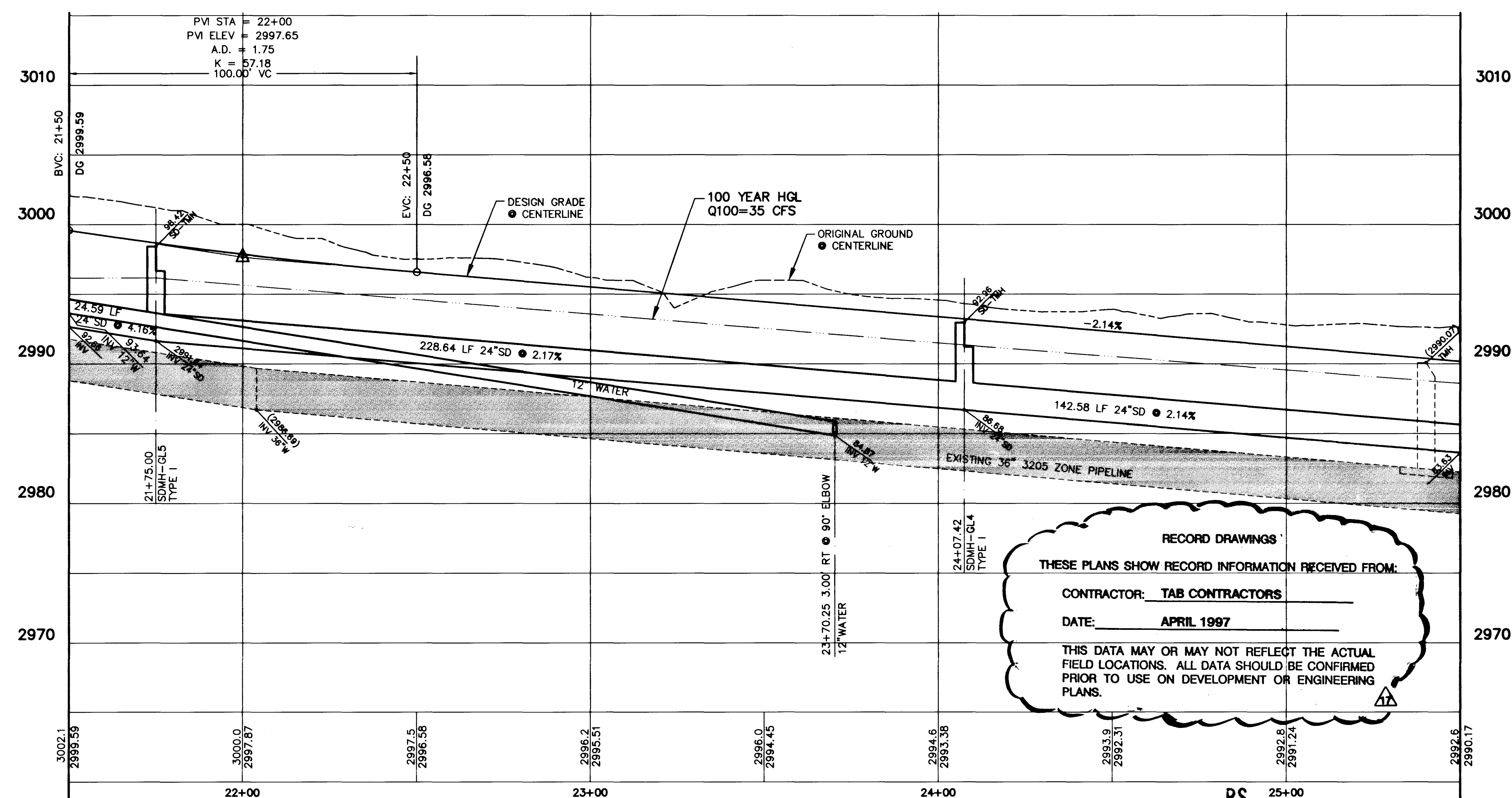
- WATER**
- ① INSTALL WATER PIPES PER SUMMERLIN STD. U-20
 - ② INSTALL 12" DIA. GATE VALVE & BOX (U-34 S)
 - ③ INSTALL 8" DIA. GATE VALVE & BOX (U-34 S)
 - ④ INSTALL 12"x12"x12" TEE
 - ⑤ INSTALL 12"x12"x12"x12" CROSS
 - ⑥ INSTALL 12"x12" ELBOW
 - ⑦ INSTALL 12"x12"x8" TEE
 - ⑧ INSTALL 12"x12"x8"x6" CROSS
 - ⑨ INSTALL 2" TEMP. BLOW-OFF & CAP (U-32 S)
 - ⑩ INSTALL FIRE HYDRANT ASSEMBLY COMPLETE PER (U-33 S)
 - ⑪ IRRIGATION SLEEVE (U-18 S)
 - ⑫ EXISTING GATE VALVE MUST BE IN CLOSED POSITION PRIOR TO REMOVAL OF CAP

- STORM DRAIN**
- ① INSTALL STORM DRAIN PIPES PER SUMMERLIN STD. U-20
 - ② INSTALL STORM DRAIN MANHOLE (D1-D10 S)
 - ③ INSTALL 4' TYPE "A" DROP INLET (D-12 S)
 - ④ INSTALL TYPE "B" DROP INLET (D-13 S)
 - ⑤ INSTALL TYPE "C" MODIFIED DROP INLET (D-14 S) (SEE PLANS FOR LENGTH)
 - ⑥ INSTALL 6' TYPE "A" DROP INLET (D-12 S)

- SEWER**
- ① INSTALL SEWER PIPES PER SUMMERLIN STD. U-20
 - ② INSTALL SEWER MANHOLE (SD1-B CLV)

- STREET LIGHTING**
- ① INSTALL STREET LIGHT, SEE ELECTRICAL PLANS (E-2 S)
 - ② STREET LIGHT OR COMMON TRENCH, SEE ELECTRICAL PLANS

- TRAFFIC**
- ① INSTALL 2-3" CONDUIT
 - ② INSTALL NO. 5 PULLBOX (E-32 S)



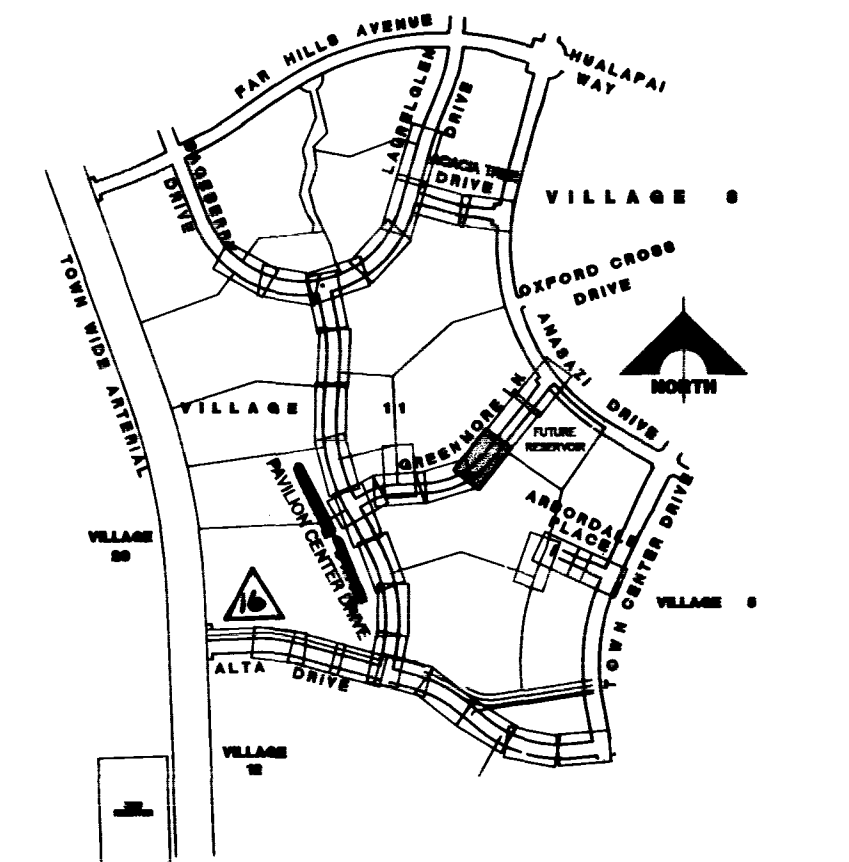
RECORD DRAWINGS

THESE PLANS SHOW RECORD INFORMATION RECEIVED FROM:

CONTRACTOR: TAB CONTRACTORS

DATE: APRIL 1997

THIS DATA MAY OR MAY NOT REFLECT THE ACTUAL FIELD LOCATIONS. ALL DATA SHOULD BE CONFIRMED PRIOR TO USE ON DEVELOPMENT OR ENGINEERING PLANS.



APPROVAL: First Approval 5/3/96 11-32-161

Las Vegas Valley Water District DATE: 9/18/96

FINAL SUBMITTAL

RECOMMENDED BY: CHRISTOPHER W. ANDERSON

DATE: 9/18/96

REVISIONS:

NO.	DATE	DESCRIPTION
1	9/18/96	REV. BY: NAME
2	9/18/96	MOVE 12" WATER STUB TO PARCEL E
3	9/18/96	FROM STA 19+86.00 TO 23+70.25

STATE OF NEVADA
REGISTERED PROFESSIONAL ENGINEER
CHRISTOPHER W. ANDERSON
NO. 5071
R.P.E. NO. 5071

G.C. WALLACE, INC.
Engineering/Architecture
1585 SOUTH HANBURY BLVD./LAS VEGAS, NEVADA 89102

SUMMERLIN
VILLAGE 11/12 THE ARBORS - UNIT 2A
GREENMOOR LANE
PLAN & PROFILE
STA 21+50 TO 25+50

SHEET **37**
SHT 37 OF 45

