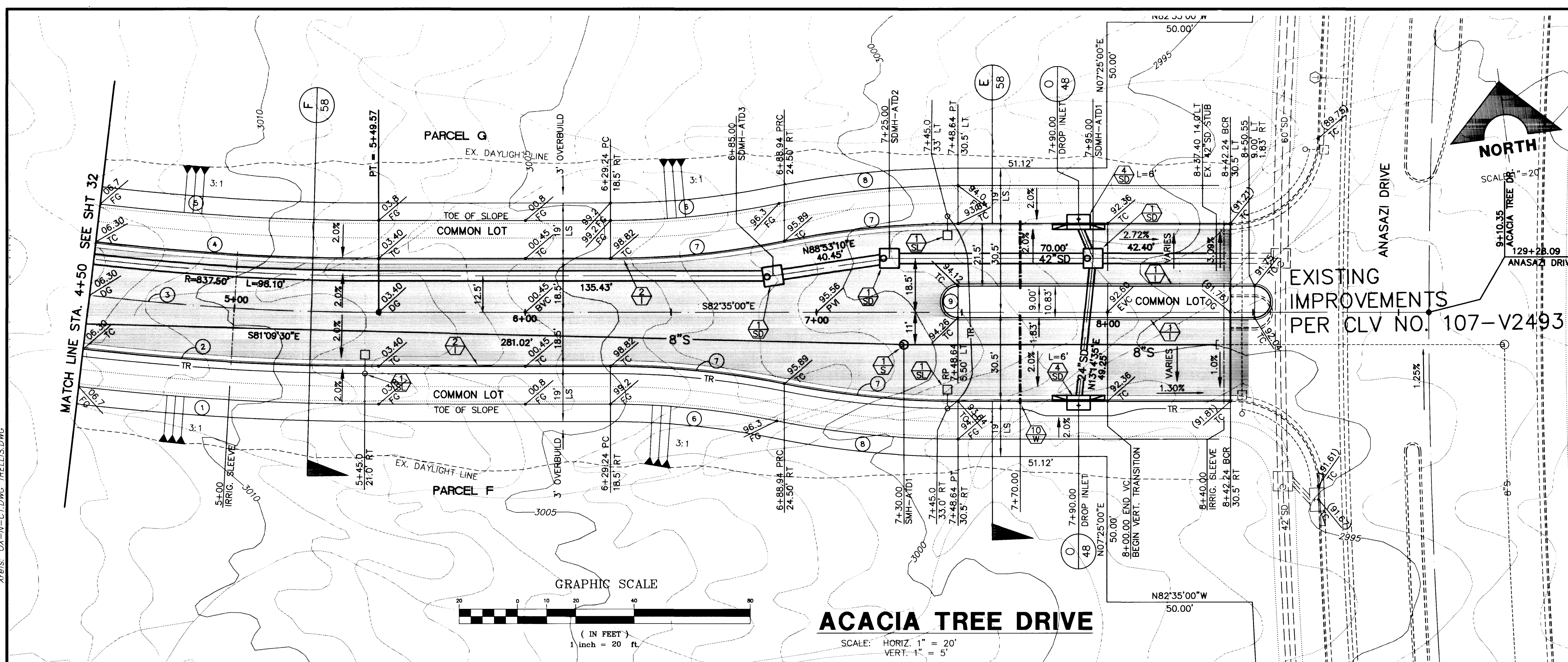


Xrefs: DX-N-CI-DWG TRELUS.DWG

Drawing: C:\DWG\11-12\21\MPRO\OXFN-PP2.DWG

May 21, 1996 8:26:41 a.m.

JOB NO. 62011.212



**CURVE DATA**

CURVE	DELTA	RADIUS	LENGTH	TANGENT
1	06°42'42"	887.50'	103.96'	52.04'
2	06°42'42"	888.50'	101.74'	50.93'
3	06°42'42"	850.00'	99.57'	49.84'
4	06°42'42"	831.50'	97.40'	48.78'
5	06°42'42"	812.50'	95.18'	47.64'
6	11°28'42"	281.00'	56.29'	28.24'
7	11°28'42"	300.00'	60.10'	30.15'
8	11°28'42"	319.00'	63.91'	32.06'
9	180°00'00"	5.41'	17.01'	---

1 INDICATES CURVE NUMBER (THIS SHEET ONLY)

- CONSTRUCTION NOTES**
- IMPROVEMENTS**
- 1 INSTALL "A" TYPE CURB (S-50 S)
  - 2 INSTALL "L" TYPE CURB & GUTTER (S-47 S)
  - 3 INSTALL AC PAVEMENT PER SECTION SHEETS 56, 57, & 58
  - 4 INSTALL CROSSWALK (S-78 S)
  - 5 INSTALL DEPRESSED CURB (S-75 S)

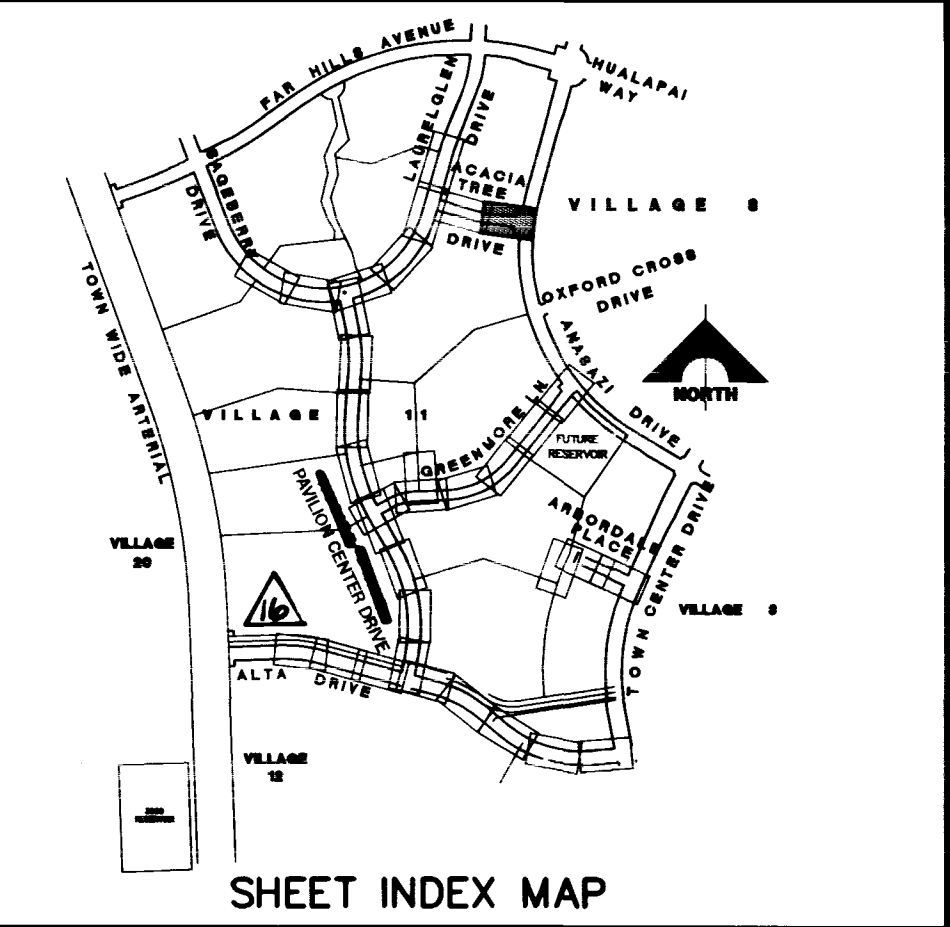
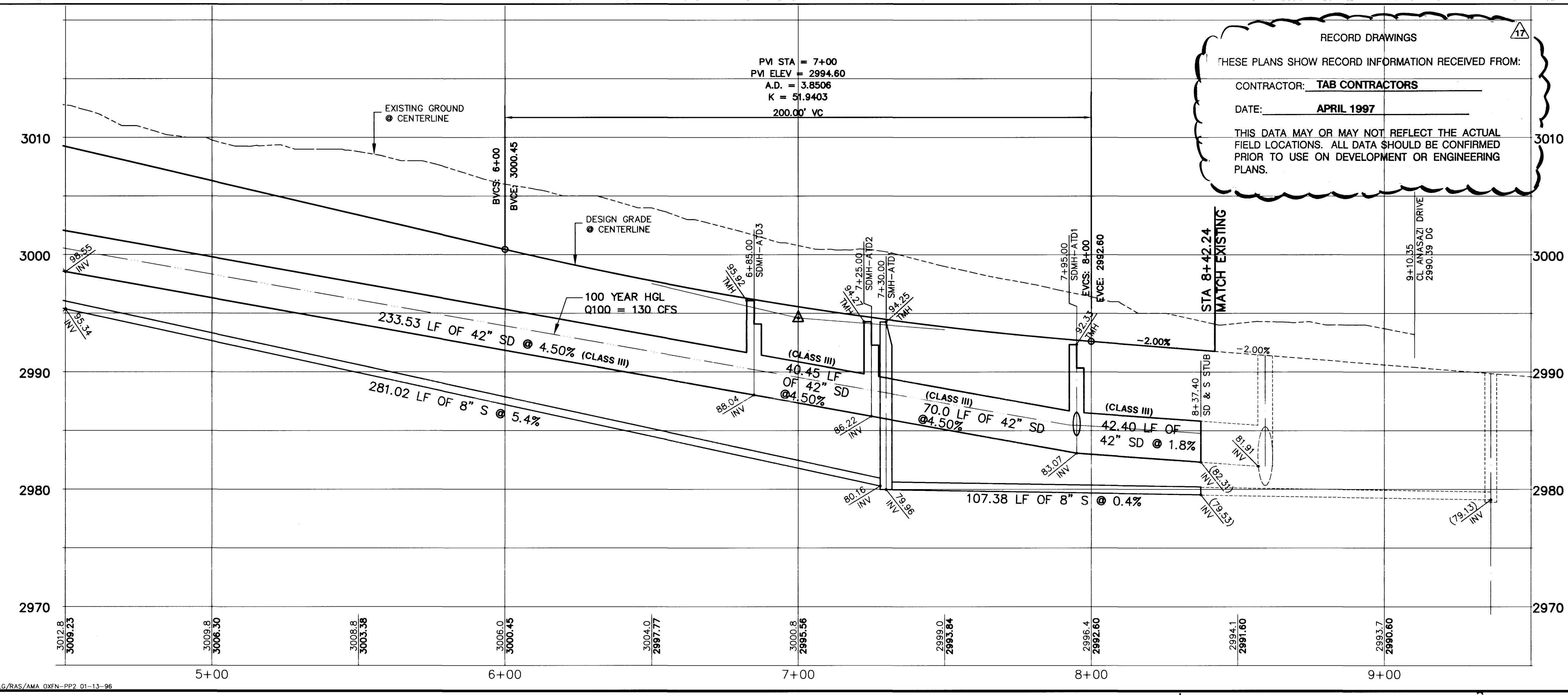
- WATER**
- INSTALL WATER PIPES PER SUMMERLIN STD. U-20
- 1W INSTALL 12" DIA. GATE VALVE & BOX (U-34 S)
  - 2W INSTALL 8" DIA. GATE VALVE & BOX (U-34 S)
  - 3W INSTALL 12"x12"x12" TEE
  - 4W INSTALL 12"x12"x12"x12" CROSS
  - 5W INSTALL 12"x12" ELBOW
  - 6W INSTALL 12"x12"x8" TEE
  - 7W INSTALL 12"x12"x8"x6" CROSS
  - 8W INSTALL 2" TEMP. BLOW-OFF & CAP (U-32 S)
  - 9W INSTALL FIRE HYDRANT ASSEMBLY COMPLETE PER (U-33 S)
  - 10W IRRIGATION SLEEVE (U-18 S)
  - 11W EXISTING GATE VALVE MUST BE IN CLOSED POSITION PRIOR TO REMOVAL OF CAP

- STORM DRAIN**
- INSTALL STORM DRAIN PIPES PER SUMMERLIN STD. U-20
- 1SD INSTALL STORM DRAIN MANHOLE (D1-D10 S)
  - 2SD INSTALL 4' TYPE "A" DROP INLET (D-12 S)
  - 3SD INSTALL TYPE "B" DROP INLET (D-13 S)
  - 4SD INSTALL TYPE "C" MODIFIED DROP INLET (SEE PLANS FOR LENGTH) (D-14 S)
  - 5SD INSTALL 6' TYPE "A" DROP INLET (D-12 S)

- SEWER**
- INSTALL SEWER PIPES PER SUMMERLIN STD. U-20
- 1S INSTALL SEWER MANHOLE (SD1-8 CLV)

- STREET LIGHTING**
- 1SL INSTALL STREET LIGHT, SEE ELECTRICAL PLANS (E-2 S)
  - 2SL STREET LIGHT OR COMMON TRENCH, SEE ELECTRICAL PLANS

- TRAFFIC**
- 1TFC INSTALL 2-3" CONDUIT
  - 2TFC INSTALL NO. 5 PULLBOX (E-32 S)



APPROVAL: *[Signature]* 5/3/96  
LAS VEGAS VALLEY WATER DISTRICT DATE

**FINAL SUBMITTAL**

RECOMMENDED: CHRISTOPHER W. ANDERSON 5071 R.P.E. N.E. DATE: 5/3/96

REGISTERED PROFESSIONAL ENGINEER - STATE OF NEVADA  
NO. 10000  
EXPIRES 12/31/97

**G.C. WALLACE, INC.**  
Engineering/Architecture  
1555 SOUTH RAINBOW BLVD. SUITE 100, LAS VEGAS, NEVADA 89102

**SUMMERLIN**  
**VILLAGE 11/12 THE ARBORS - UNIT 2A**  
**ACACIA TREE DRIVE**  
**PLAN & PROFILE**  
**STA 4+50 TO 8+42.24**

SHEET **33**  
SHT 33 OF 65

