

CURVE DATA (1) INDICATES CURVE NUMBER (THIS SHEET ONLY)

CURVE	DELTA	RADIUS	LENGTH	TANGENT
1	90°00'00"	11.00'	17.28'	11.00'
2	01°53'08"	871.50'	29.21'	14.60'
3	01°53'08"	868.50'	28.58'	14.29'
4	01°53'08"	850.00'	27.97'	13.99'
5	01°53'08"	831.50'	27.36'	13.68'
6	01°53'08"	812.50'	26.74'	13.37'

CONSTRUCTION NOTES

IMPROVEMENTS

- INSTALL "A" TYPE CURB (S-50 S)
- INSTALL "L" TYPE CURB & GUTTER (S-47 S)
- INSTALL AC PAVEMENT PER SECTION SHEETS 56, 57, & 58
- INSTALL CROSSWALK (S-78 S)
- INSTALL DEPRESSED CURB (S-75 S)

WATER

INSTALL WATER PIPES PER SUMMERLIN STD. U-20

- INSTALL 12" DIA. GATE VALVE & BOX (U-34 S)
- INSTALL 8" DIA. GATE VALVE & BOX (U-34 S)
- INSTALL 12"x12"x12" TEE
- INSTALL 12"x12"x12"x12" CROSS
- INSTALL 12"x12" ELBOW
- INSTALL 12"x12"x8" TEE
- INSTALL 12"x12"x8"x6" CROSS
- INSTALL 2" TEMP. BLOW-OFF & CAP (U-32 S)
- INSTALL FIRE HYDRANT ASSEMBLY COMPLETE PER (U-33 S)
- IRRIGATION SLEEVE (U-18 S)
- EXISTING GATE VALVE MUST BE IN CLOSED POSITION PRIOR TO REMOVAL OF CAP
- INSTALL 12"x12"x6" TEE

STORM DRAIN

INSTALL STORM DRAIN PIPES PER SUMMERLIN STD. U-20

- INSTALL STORM DRAIN MANHOLE (D1-D10 S)
- INSTALL 4' TYPE "A" DROP INLET (D-12 S)
- INSTALL TYPE "B" DROP INLET (D-13 S)
- INSTALL TYPE "C" MODIFIED DROP INLET (SEE PLANS FOR LENGTH) (D-14 S)
- INSTALL 6' TYPE "A" DROP INLET (D-12 S)

SEWER

INSTALL SEWER PIPES PER SUMMERLIN STD. U-20

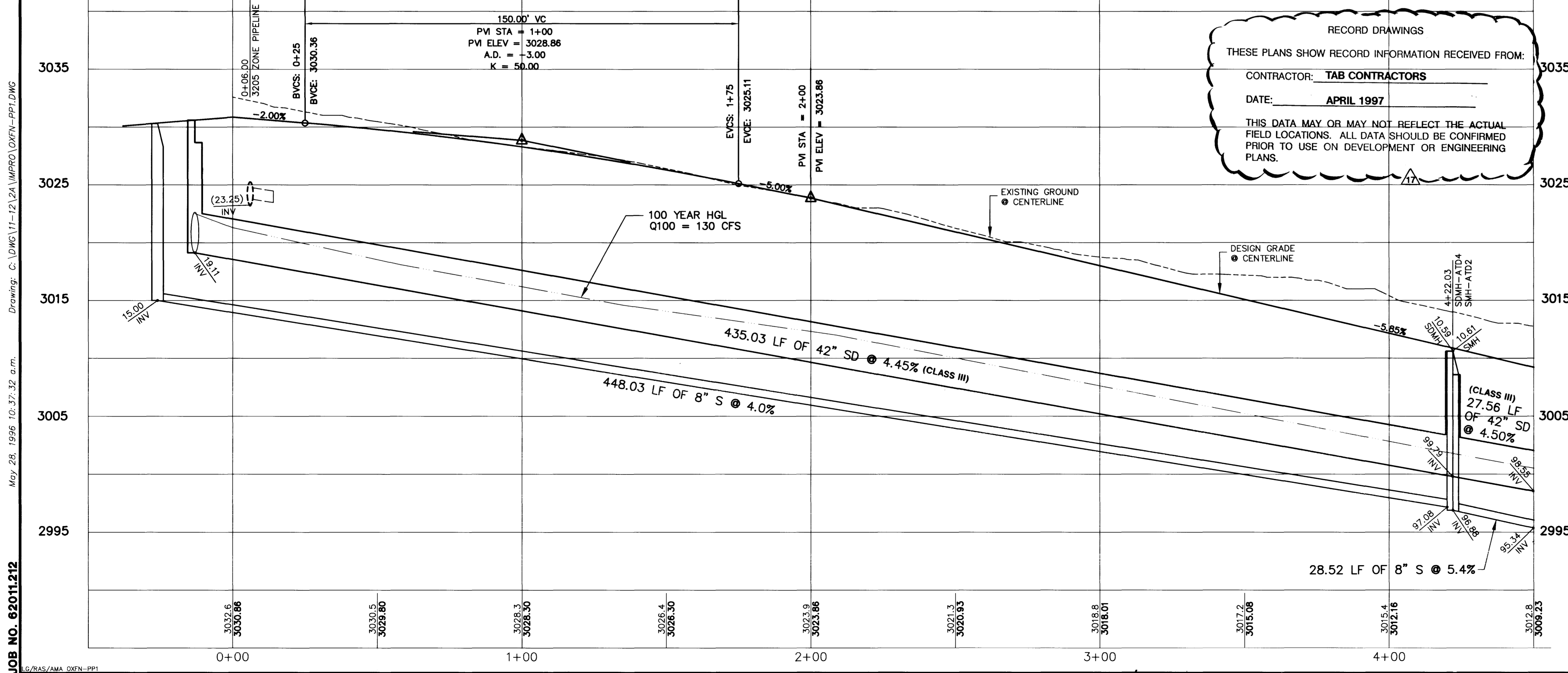
- INSTALL SEWER MANHOLE (SD1-8 CLV)

STREET LIGHTING

- INSTALL STREET LIGHT, SEE ELECTRICAL PLANS (E-2 S)
- STREET LIGHT OR COMMON TRENCH, SEE ELECTRICAL PLANS

TRAFFIC

- INSTALL 2-3" CONDUIT
- INSTALL NO. 5 PULLBOX (E-32 S)



SEWER

INSTALL SEWER PIPES PER SUMMERLIN STD. U-20

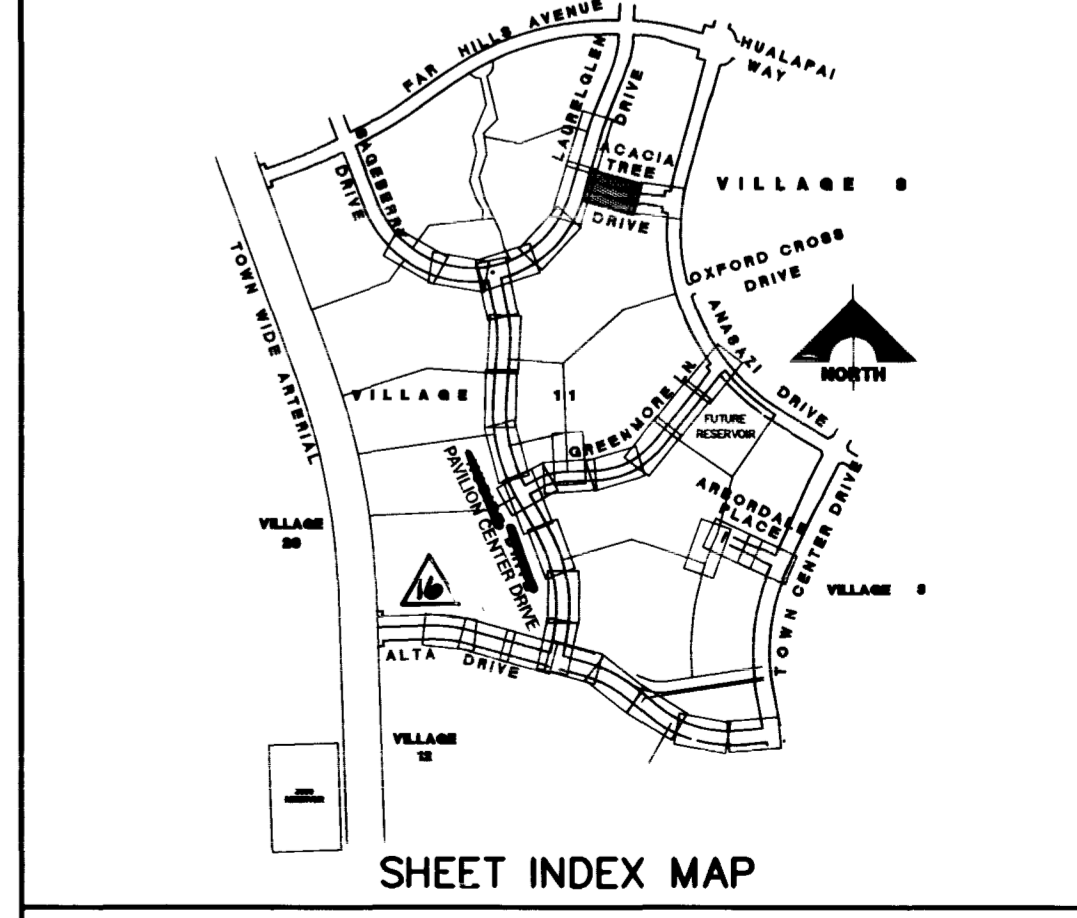
- INSTALL SEWER MANHOLE (SD1-8 CLV)

STREET LIGHTING

- INSTALL STREET LIGHT, SEE ELECTRICAL PLANS (E-2 S)
- STREET LIGHT OR COMMON TRENCH, SEE ELECTRICAL PLANS

TRAFFIC

- INSTALL 2-3" CONDUIT
- INSTALL NO. 5 PULLBOX (E-32 S)



APPROVAL: _____ DATE: 5/31/96

LAS VEGAS VALLEY WATER DISTRICT

JOB NO. 62011.212
 May 28, 1996 10:37:32 a.m.
 Drawing: C:\DWG\11-12\2A\IMPRO\OXFN-PP1.DWG
 Xrefs: OX-N-CT.DWG, TRELIS.DWG
 10/RAS/AMA OXFN-PP1

FINAL SUBMITTAL
 RECOMMENDED BY: CURTIS W. ANDERSON
 DATE: 5/31/96
 R.F.E. NO.: 5071
 STATE OF NEVADA
 PROFESSIONAL ENGINEER
 G. C. WALLACE, INC.
 Engineering/Architecture
 1555 SOUTH RAINBOW BLVD./LAS VEGAS, NEVADA 89102
SUMMERLIN VILLAGE 11/12 THE ARBORS - UNIT 2A
ACACIA TREE DRIVE
PLAN & PROFILE
STA 0+00 TO 4+50
 SHEET **32**
 SHT 32 OF 65

