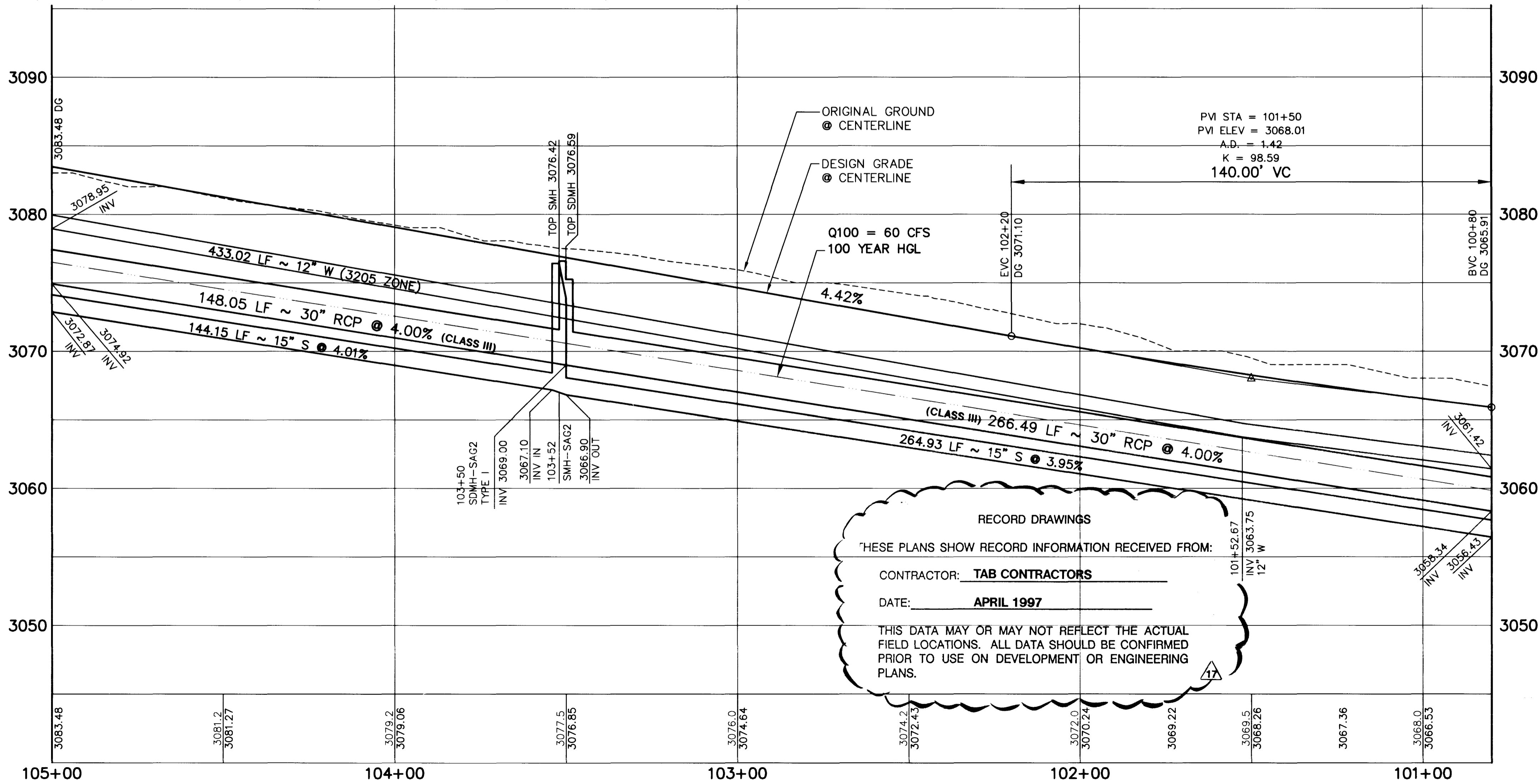
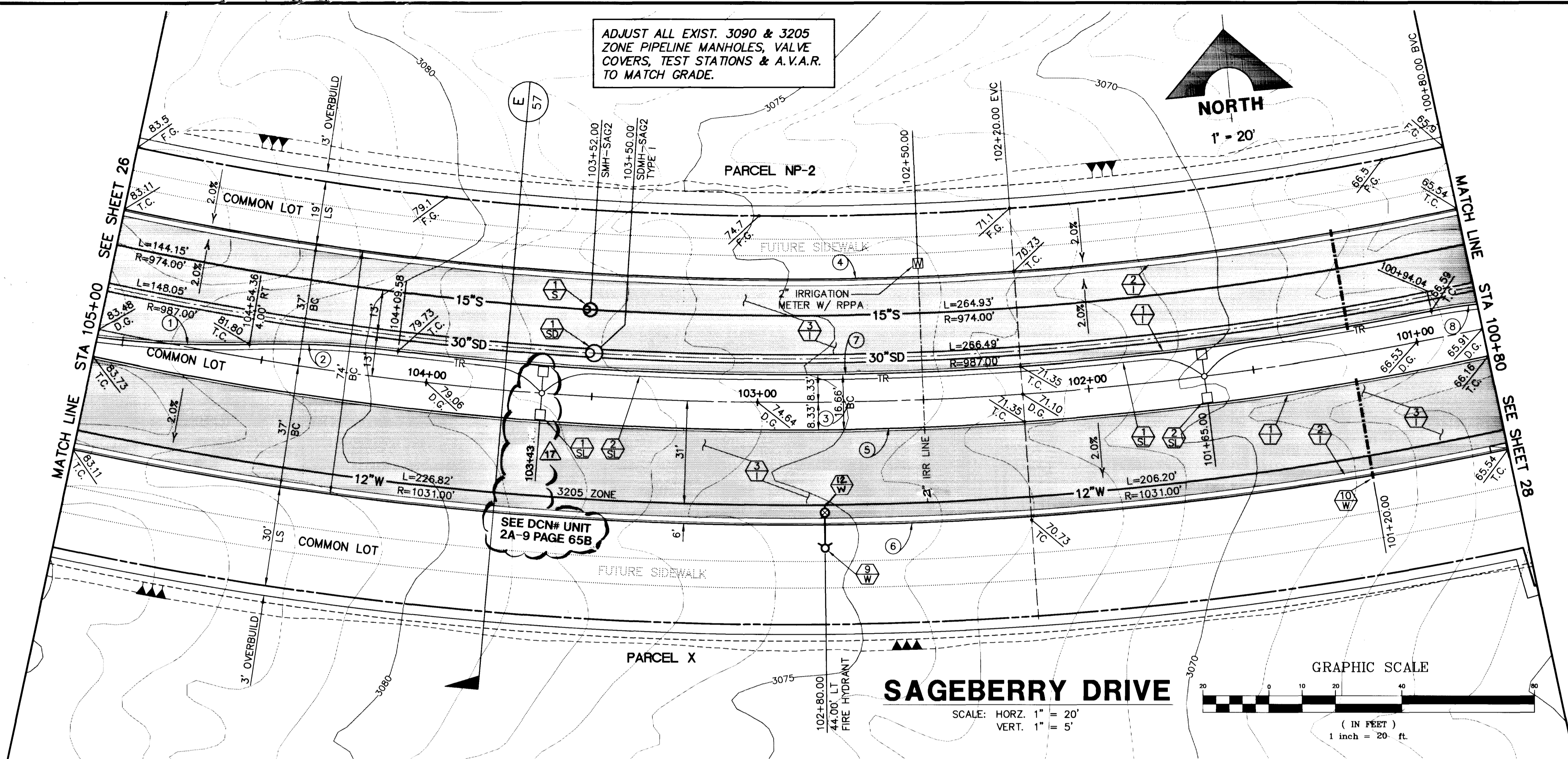


Xrefs: XR-LOOP.DWG LOOP TOP.O.DWG LOOP SH.DWG

Drawing: C:\DWG\VL11-12\12A LOOP-PP2.DWG

JOB NO. 62011.212 May 23, 1996 10:31:01 a.m.



RECORD DRAWINGS
 THESE PLANS SHOW RECORD INFORMATION RECEIVED FROM:
 CONTRACTOR: TAB CONTRACTORS
 DATE: APRIL 1997
 THIS DATA MAY OR MAY NOT REFLECT THE ACTUAL FIELD LOCATIONS. ALL DATA SHOULD BE CONFIRMED PRIOR TO USE ON DEVELOPMENT OR ENGINEERING PLANS.

CURVE DATA

CURVE	DELTA	RADIUS	LENGTH	TANGENT
1	08°48'10"	300.00'	46.09'	23.09'
2	08°32'51"	300.00'	44.75'	22.42'
3	24°03'51"	1000.00'	420.00'	213.14'
4	24°03'51"	96.3.00'	404.46'	205.28'
5	24°03'51"	1008.13'	423.50'	214.92'
6	24°03'51"	1037.00'	435.54'	221.03'
7	18°04'46"	991.66'	312.91'	157.77'
8	05°19'43"	150.00'	13.95'	6.98'

① INDICATES CURVE NUMBER (THIS SHEET ONLY)

- CONSTRUCTION NOTES**
- IMPROVEMENTS**
- ① INSTALL "A" TYPE CURB (S-50 S)
 - ② INSTALL "L" TYPE CURB & GUTTER (S-47 S)
 - ③ INSTALL AC PAVEMENT PER SECTION SHEETS 56, 57, & 58
 - ④ INSTALL CROSSWALK (S-78 S)
 - ⑤ INSTALL DEPRESSED CURB (S-75 S)

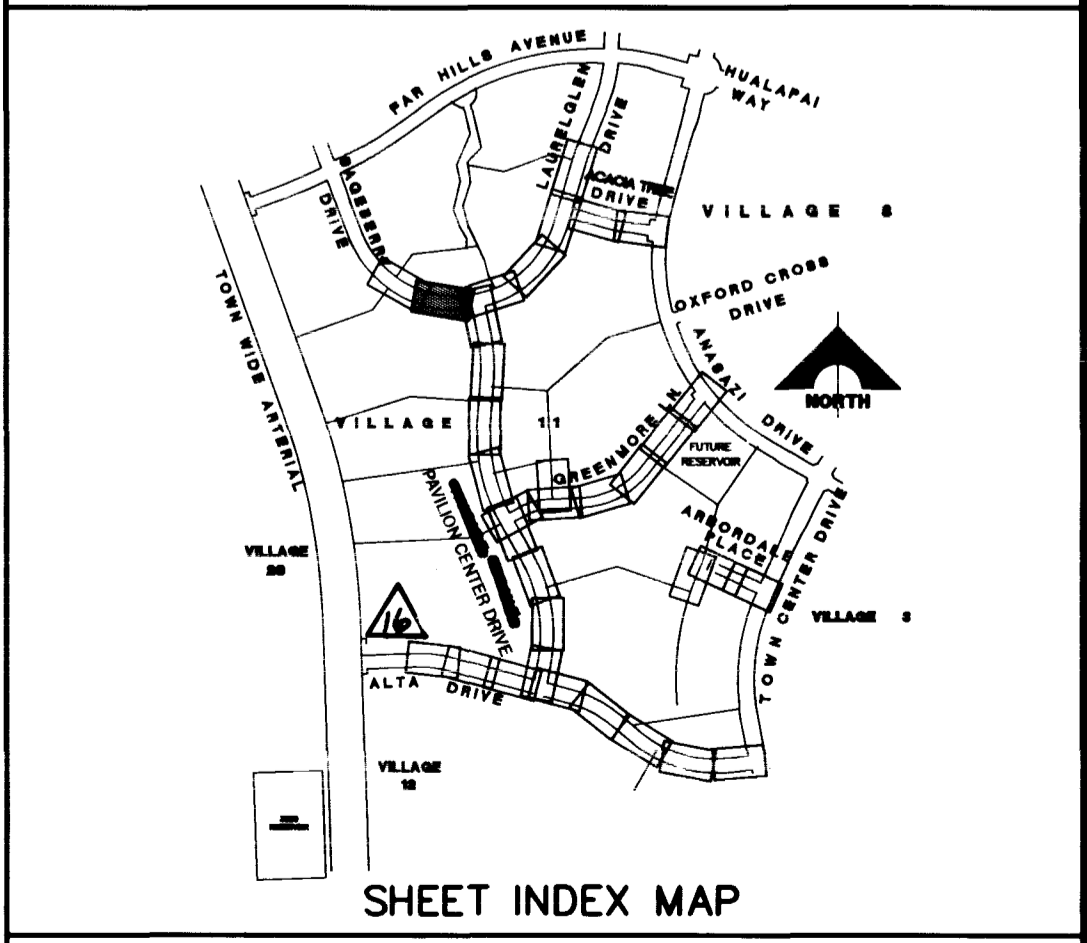
- WATER**
- INSTALL WATER PIPES PER SUMMERLIN STD. U-20
- ① INSTALL 12" DIA. GATE VALVE & BOX (U-34 S)
 - ② INSTALL 8" DIA. GATE VALVE & BOX (U-34 S)
 - ③ INSTALL 12"x12"x12" TEE
 - ④ INSTALL 12"x12"x12"x12" CROSS
 - ⑤ INSTALL 12"x12" ELBOW
 - ⑥ INSTALL 12"x12"x8" TEE
 - ⑦ INSTALL 12"x12"x8"x6" CROSS
 - ⑧ INSTALL 2" TEMP. BLOW-OFF & CAP (U-32 S)
 - ⑨ INSTALL FIRE HYDRANT ASSEMBLY COMPLETE PER (U-33 S)
 - ⑩ IRRIGATION SLEEVE (U-18 S)
 - ⑪ EXISTING GATE VALVE MUST BE IN CLOSED POSITION PRIOR TO REMOVAL OF CAP
 - ⑫ INSTALL 12"x12"x6" TEE


- STORM DRAIN**
- INSTALL STORM DRAIN PIPES PER SUMMERLIN STD. U-20
- ① INSTALL STORM DRAIN MANHOLE (D1-D10 S)
 - ② INSTALL 4' TYPE "A" DROP INLET (D-12 S)
 - ③ INSTALL TYPE "B" DROP INLET (D-13 S)
 - ④ INSTALL TYPE "C" MODIFIED DROP INLET (D-14 S) (SEE PLANS FOR LENGTH)
 - ⑤ INSTALL 6' TYPE "A" DROP INLET (D-12 S)

- SEWER**
- INSTALL SEWER PIPES PER SUMMERLIN STD. U-20
- ① INSTALL SEWER MANHOLE (SD1-B CLV)

- STREET LIGHTING**
- ① INSTALL STREET LIGHT, SEE ELECTRICAL PLANS (E-2 S)
 - ② STREET LIGHT OR COMMON TRENCH, SEE ELECTRICAL PLANS

- TRAFFIC**
- ① INSTALL 2-3" CONDUIT
 - ② INSTALL NO. 5 PULLBOX (E-32 S)



APPROVAL:  5/31/96
 LAS VEGAS VALLEY WATER DISTRICT DATE

FINAL SUBMITTAL

RECOMMENDED BY: CHRISTOPHER W. ANDERSON, 5071 R.F.E. NO. 5071

DESIGNED BY: G.C. WALLACE, INC., 1535 SOUTH RANNEY BLVD., LAS VEGAS, NEVADA 89102

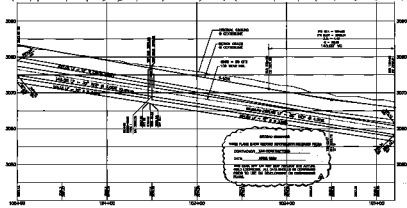
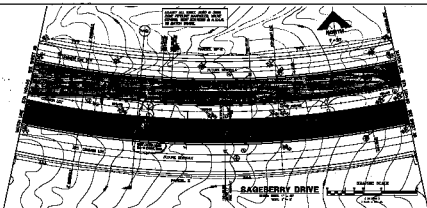
ENGINEER: G.C. WALLACE, INC., Engineering/Architecture

VILLAGE 11/12 THE ARBORS - UNIT 2A
SAGEBERRY DRIVE
PLAN & PROFILE
STA 100+80 TO 105+00

SHEET **27** OF 65

107Y-4463-2A

SHOULDER SHALL BE 10' WIDE
 AND SHALL BE GRADED WITH
 2% DRAINAGE SLOPE TO A DRAIN
 IN EACH DIRECTION.



DATE: 10/1/78

SCALE: 1" = 40'

PROJECT: RAGBERRY DRIVE

CONTRACTOR: [Name]

ENGINEER: [Name]

APPROVAL: [Signature]

27

107Y-4483-2A