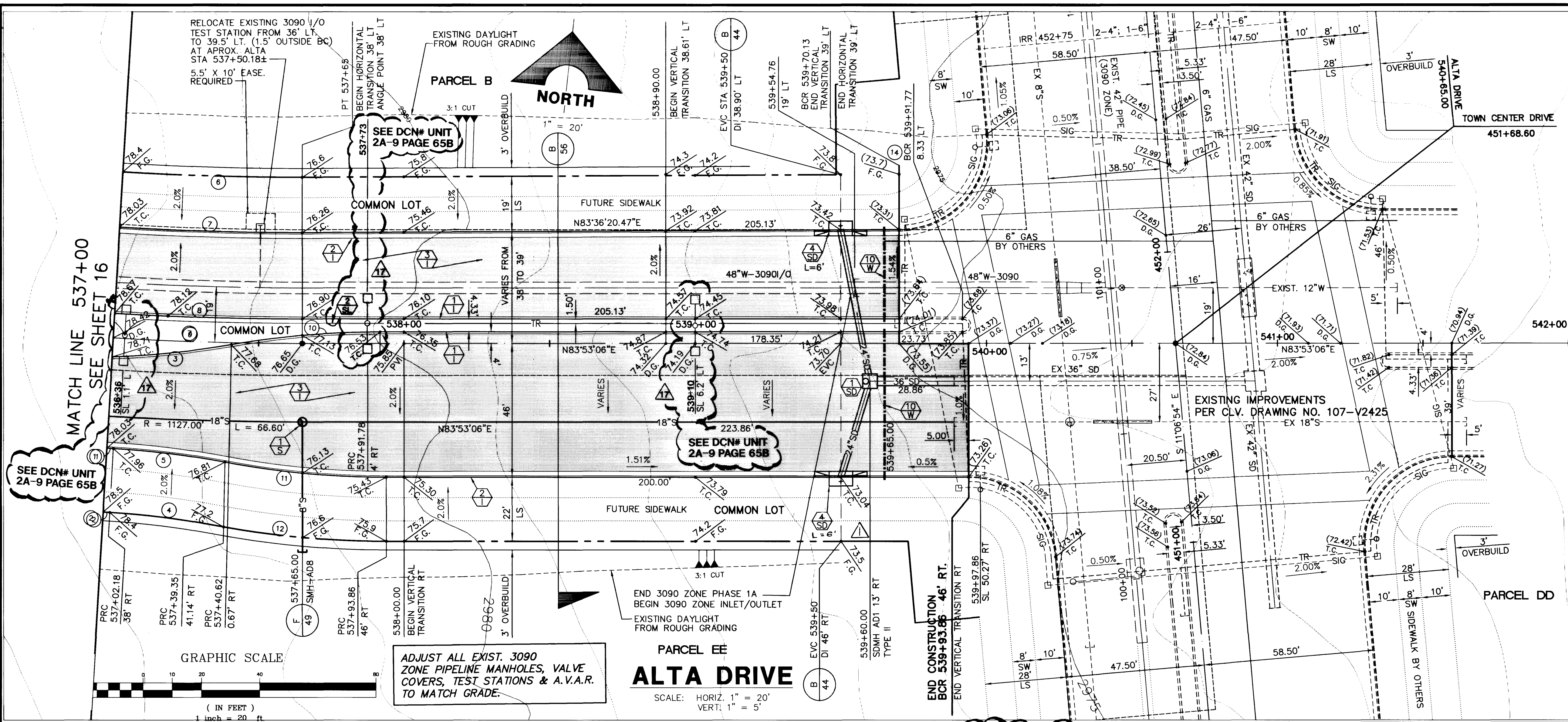


Notes: ALT-TOPD.DWG ALTA-MS.DWG

Drawing: C:\DWG\VT1-12\U2A-IMP\ALT-PP17.DWG

May 28, 1996 4:10:32 p.m.

JOB NO. 62011.212



**CURVE DATA**

CURVE	DELTA	RADIUS	LENGTH	TANGENT
1	0°06'49"	1138.00'	2.26'	1.13'
2	0°06'49"	1160.00'	2.30'	1.15'
3	0°52'14"	300.00'	41.21'	20.64'
4	0°72'57"	278.00'	35.82'	17.93'
5	0°72'57"	300.00'	38.65'	19.35'
6	0°23'09"	1043.00'	61.63'	30.83'
7	0°23'09"	1062.00'	62.76'	31.39'
8	0°23'09"	1091.67'	64.51'	32.26'
9	0°23'09"	1100.00'	65.00'	32.51'
10	0°49'12"	300.00'	51.42'	25.77'
11	10°39'17"	300.00'	55.79'	27.97'
12	10°39'17"	322.00'	59.88'	30.03'

NOTE: FOR TRAFFIC SIGNAL CONDUIT SEE SIGNAGE AND STRIPING PLAN 1, SHEET 60.

**CONSTRUCTION NOTES**

- IMPROVEMENTS**
- 1. INSTALL "A" TYPE CURB (S-50 S)
  - 2. INSTALL "L" TYPE CURB & GUTTER (S-47 S)
  - 3. INSTALL AC PAVEMENT PER SECTION SHEETS 56, 57, & 58
  - 4. INSTALL CROSSWALK (S-78 S)
  - 5. INSTALL DEPRESSED CURB (S-75 S)

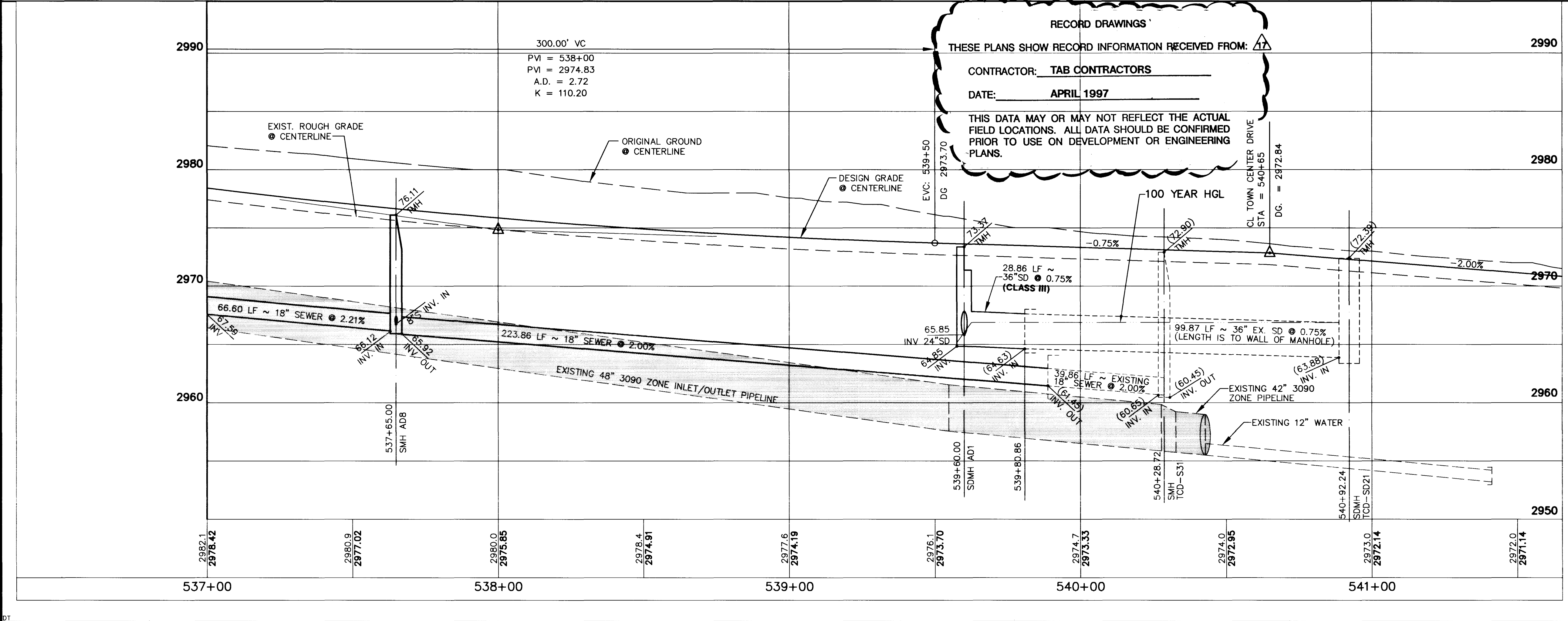
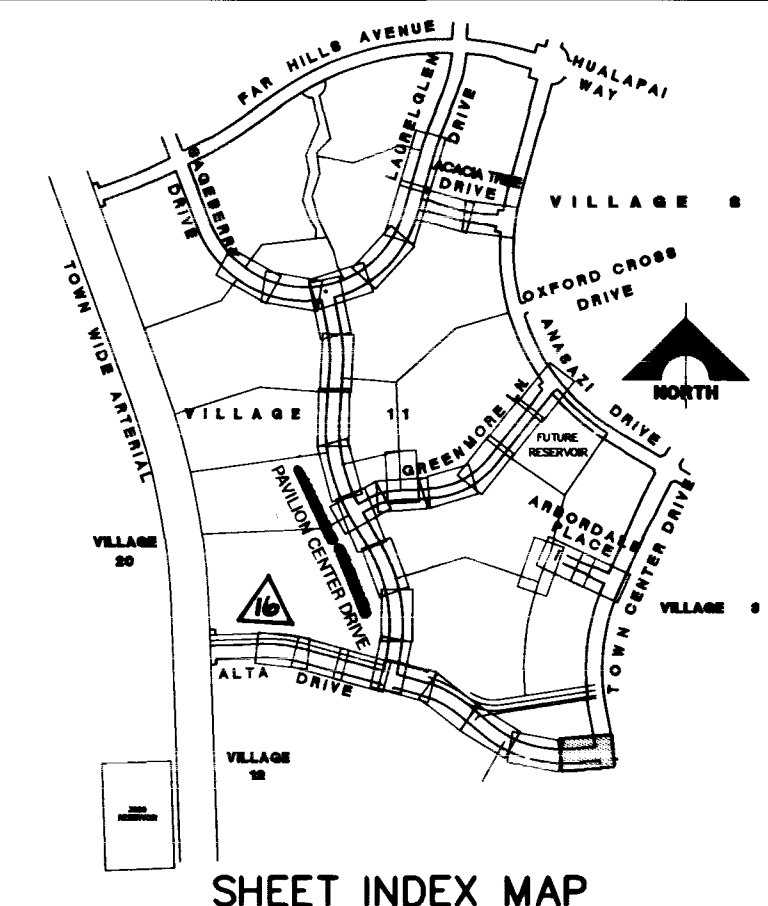
- WATER**
- 1. INSTALL WATER PIPES PER SUMMERLIN STD. U-20
  - 2. INSTALL 12" DIA. GATE VALVE & BOX (U-34 S)
  - 3. INSTALL 8" DIA. GATE VALVE & BOX (U-34 S)
  - 4. INSTALL 12"x12"x12" TEE
  - 5. INSTALL 12"x12"x12" CROSS
  - 6. INSTALL 12"x12" ELBOW
  - 7. INSTALL 12"x12"x8" TEE
  - 8. INSTALL 12"x12"x8"x6" CROSS (U-32 S)
  - 9. INSTALL 2" TEMP. BLOW-OFF & CAP (U-33 S)
  - 10. INSTALL FIRE HYDRANT ASSEMBLY COMPLETE PER (U-18 S)
  - 11. IRRIGATION SLEEVE (U-18 S)
  - 12. EXISTING GATE VALVE MUST BE IN CLOSED POSITION PRIOR TO REMOVAL OF CAP

- STORM DRAIN**
- 1. INSTALL STORM DRAIN PIPES PER SUMMERLIN STD. U-20
  - 2. INSTALL STORM DRAIN MANHOLE (D1-D10 S)
  - 3. INSTALL 4" TYPE "A" DROP INLET (D-12 S)
  - 4. INSTALL TYPE "B" DROP INLET (D-13 S)
  - 5. INSTALL TYPE "C" MODIFIED DROP INLET (SEE PLANS FOR LENGTH) (D-14 S)
  - 6. INSTALL 6" TYPE "A" DROP INLET (D-12 S)

- SEWER**
- 1. INSTALL SEWER PIPES PER SUMMERLIN STD. U-20
  - 2. INSTALL SEWER MANHOLE (SD1-B CLV)

- STREET LIGHTING**
- 1. INSTALL STREET LIGHT, SEE ELECTRICAL PLANS (E-2 S)
  - 2. STREET LIGHT OR COMMON TRENCH, SEE ELECTRICAL PLANS

- TRAFFIC**
- 1. INSTALL 2-3" CONDUIT
  - 2. INSTALL NO. 5 PULLBOX (E-32 S)



**RECORD DRAWINGS**

THESE PLANS SHOW RECORD INFORMATION RECEIVED FROM:

CONTRACTOR: TAB CONTRACTORS

DATE: APRIL 1997

THIS DATA MAY OR MAY NOT REFLECT THE ACTUAL FIELD LOCATIONS. ALL DATA SHOULD BE CONFIRMED PRIOR TO USE ON DEVELOPMENT OR ENGINEERING PLANS.

APPROVAL: *[Signature]* 5/31/96

LAS VEGAS VALLEY WATER DISTRICT DATE

**FINAL SUBMITTAL**

RECOMMENDED: CHRISTOPHER W. ANDERSON

DATE: 5/31/96

REVISION: 3-5-96

DESCRIPTION: REV. ST. NAME, REV. TYPE, DI TO TYPE, C. MOD.

DATE: 07/03/96

R.F.E. NO. 5071

REGISTERED PROFESSIONAL ENGINEER STATE OF NEVADA

G. C. WALLACE, INC. Engineering/Architecture 1555 SOUTH RANNEY BLVD./LAS VEGAS, NEVADA 89102

**SUMMERLIN VILLAGE 11/12 THE ARBORS - UNIT 2A**

**ALTA DRIVE PLAN & PROFILE**

**STA 537+00 TO 539+93.86**

SHEET **17** OF 65

470 95 142 11-32-141 107Y-4463-2A

