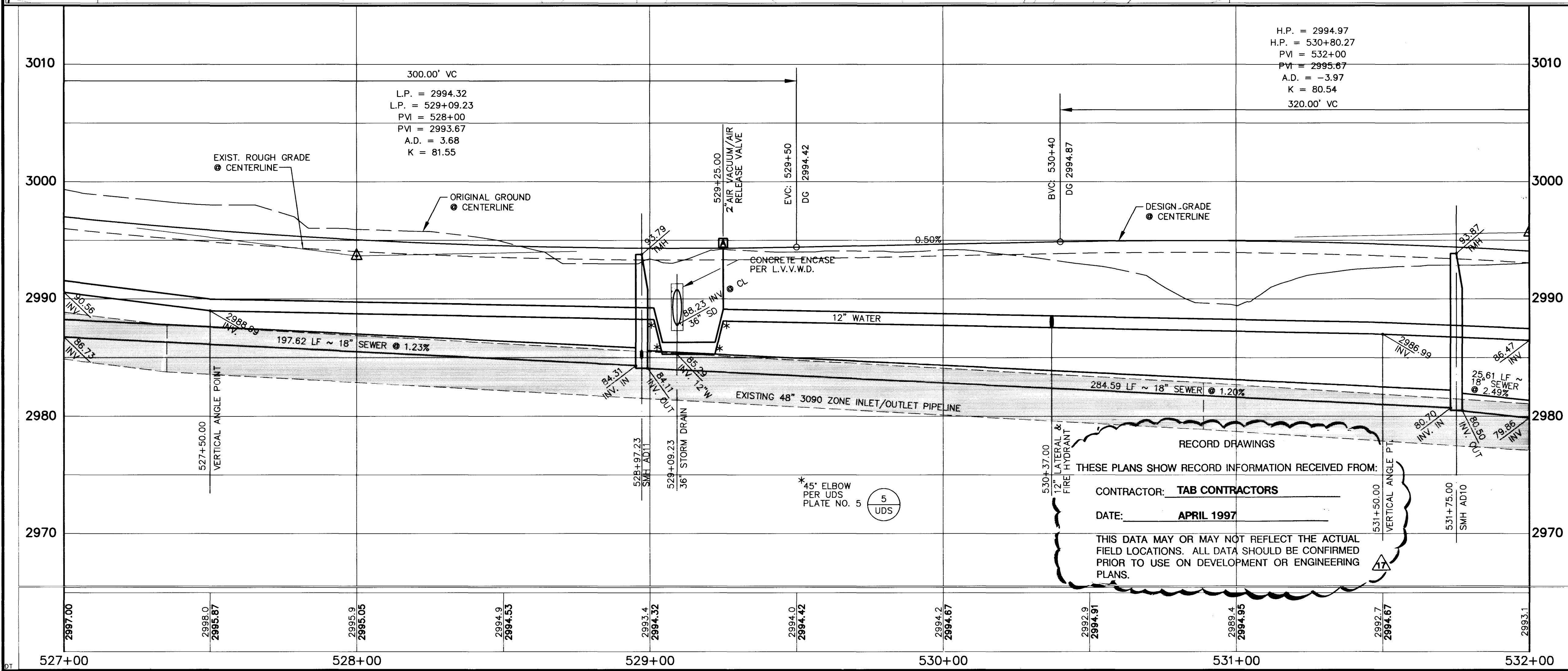
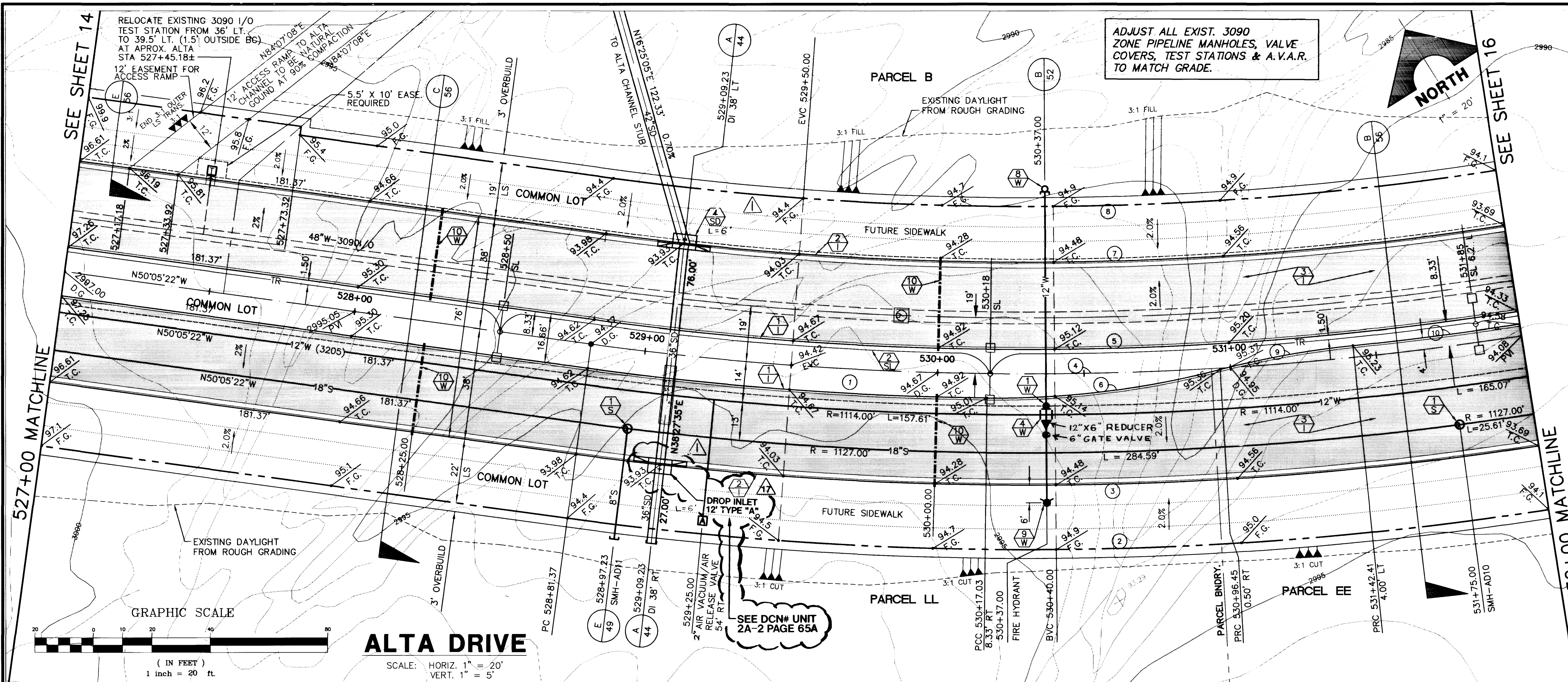


Xrefs: ALT-TOPO.DWG ALTA-MS.DWG

Drawing: C:\DWG\11-12\UZA-IMP\ALT-PP15.DWG

May 28, 1996 3:39:31 p.m.

JOB NO. 62011.212



**CURVE DATA** (1) INDICATES CURVE NUMBER (THIS SHEET ONLY)

CURVE	DELTA	RADIUS	LENGTH	TANGENT
1	07°03'58"	1108.33'	136.69'	68.43'
2	16°35'47"	1160.00'	336.01'	169.19'
3	11°38'07"	1138.00'	329.63'	165.98'
4	16°35'47"	1100.00'	318.63'	160.44'
5	16°35'47"	1091.67'	316.21'	159.22'
6	15°20'40"	300.00'	80.34'	40.41'
7	16°35'47"	1082.00'	307.62'	154.89'
8	16°35'47"	1043.00'	302.12'	152.12'
9	08°48'50"	300.00'	46.15'	23.12'
10	02°59'59"	1096.00'	57.38'	28.70'

NOTE: FOR TRAFFIC SIGNAL CONDUIT SEE SIGNAGE AND STRIPING PLAN 1, SHEET 60.

**CONSTRUCTION NOTES**

- IMPROVEMENTS**
- 1 INSTALL "A" TYPE CURB (S-50 S)
  - 2 INSTALL "L" TYPE CURB & GUTTER (S-47 S)
  - 3 INSTALL AC PAVEMENT PER SECTION SHEETS 56, 57, & 58
  - 4 INSTALL CROSSWALK (S-78 S)
  - 5 INSTALL DEPRESSED CURB (S-75 S)

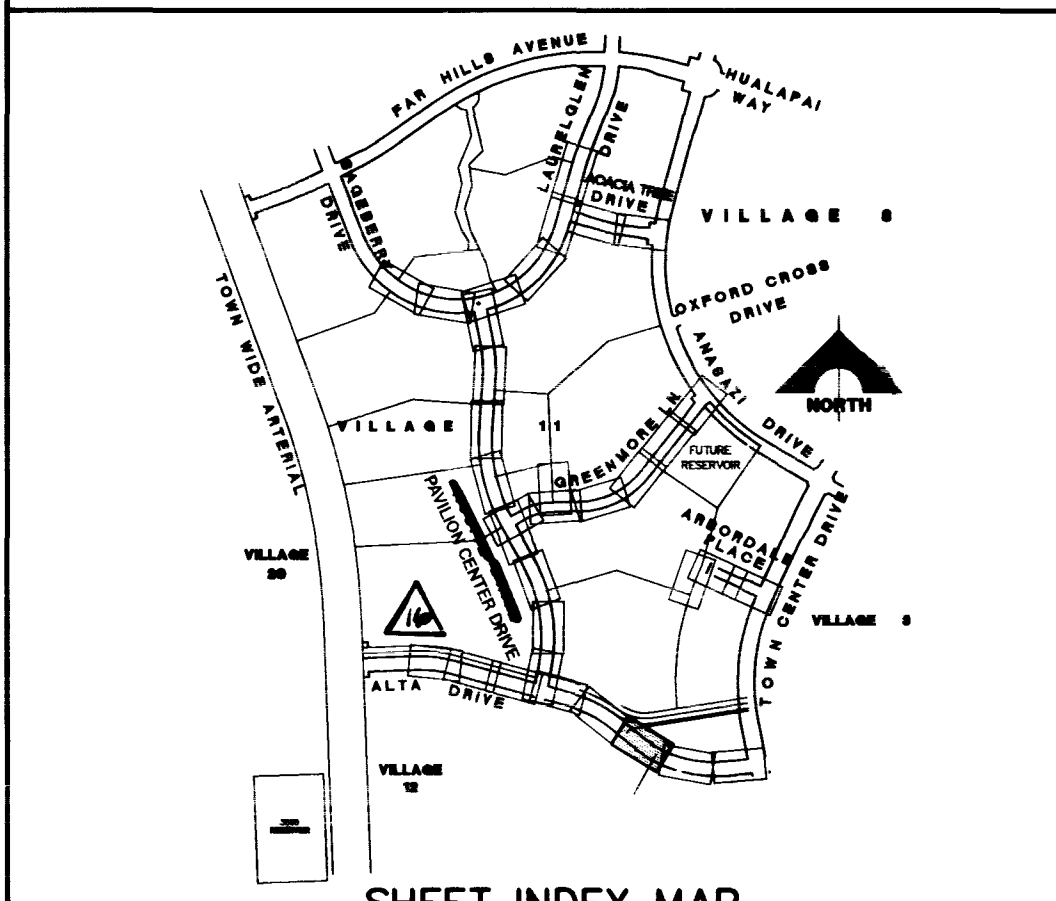
- WATER**
- 1 INSTALL WATER PIPES PER SUMMERLIN STD. U-20
  - 2 INSTALL 12" DIA. GATE VALVE & BOX (U-34 S)
  - 3 INSTALL 8" DIA. GATE VALVE & BOX (U-34 S)
  - 4 INSTALL 12"x12"x12" TEE
  - 5 INSTALL 12"x12"x12"x12" CROSS
  - 6 INSTALL 12"x12" ELBOW
  - 7 INSTALL 12"x12"x8" TEE
  - 8 INSTALL 12"x12"x8"x6" CROSS
  - 9 INSTALL 2" TEMP. BLOW-OFF & CAP (U-32 S)
  - 10 INSTALL FIRE HYDRANT ASSEMBLY COMPLETE PER (U-33 S)
  - 11 IRRIGATION SLEEVE (U-18 S)
  - 12 EXISTING GATE VALVE MUST BE IN CLOSED POSITION PRIOR TO REMOVAL OF CAP

- STORM DRAIN**
- 1 INSTALL STORM DRAIN PIPES PER SUMMERLIN STD. U-20
  - 2 INSTALL STORM DRAIN MANHOLE (D1-D10 S)
  - 3 INSTALL 4' TYPE "A" DROP INLET (D-12 S)
  - 4 INSTALL TYPE "B" DROP INLET (D-13 S)
  - 5 INSTALL TYPE "C" MODIFIED DROP INLET (SEE PLANS FOR LENGTH) (D-14 S)
  - 6 INSTALL 6' TYPE "A" DROP INLET (D-12 S)

- SEWER**
- 1 INSTALL SEWER PIPES PER SUMMERLIN STD. U-20
  - 2 INSTALL SEWER MANHOLE (SD1-B CLV)

- STREET LIGHTING**
- 1 INSTALL STREET LIGHT, SEE ELECTRICAL PLANS (E-2 S)
  - 2 STREET LIGHT OR COMMON TRENCH, SEE ELECTRICAL PLANS

- TRAFFIC**
- 1 INSTALL 2-3" CONDUIT (E-32 S)
  - 2 INSTALL NO. 5 PULLBOX (E-32 S)



APPROVAL: *[Signature]* 5/31/96

LAS VEGAS VALLEY WATER DISTRICT DATE

SHEET **15** SHT 15 OF 65

**FINAL SUBMITTAL**

RECOMMENDED: CHRISTOPHER W. ANDERSON

DATE: 5/31/96

R.F.E. NO. 9071

STATE OF NEVADA PROFESSIONAL ENGINEER

G.C. WALLACE, INC. Engineering/Architecture

VILLAGE 11/12 THE ARBORS - UNIT 2A

ALTA DRIVE PLAN & PROFILE STA 527+00 TO 532+00.00

