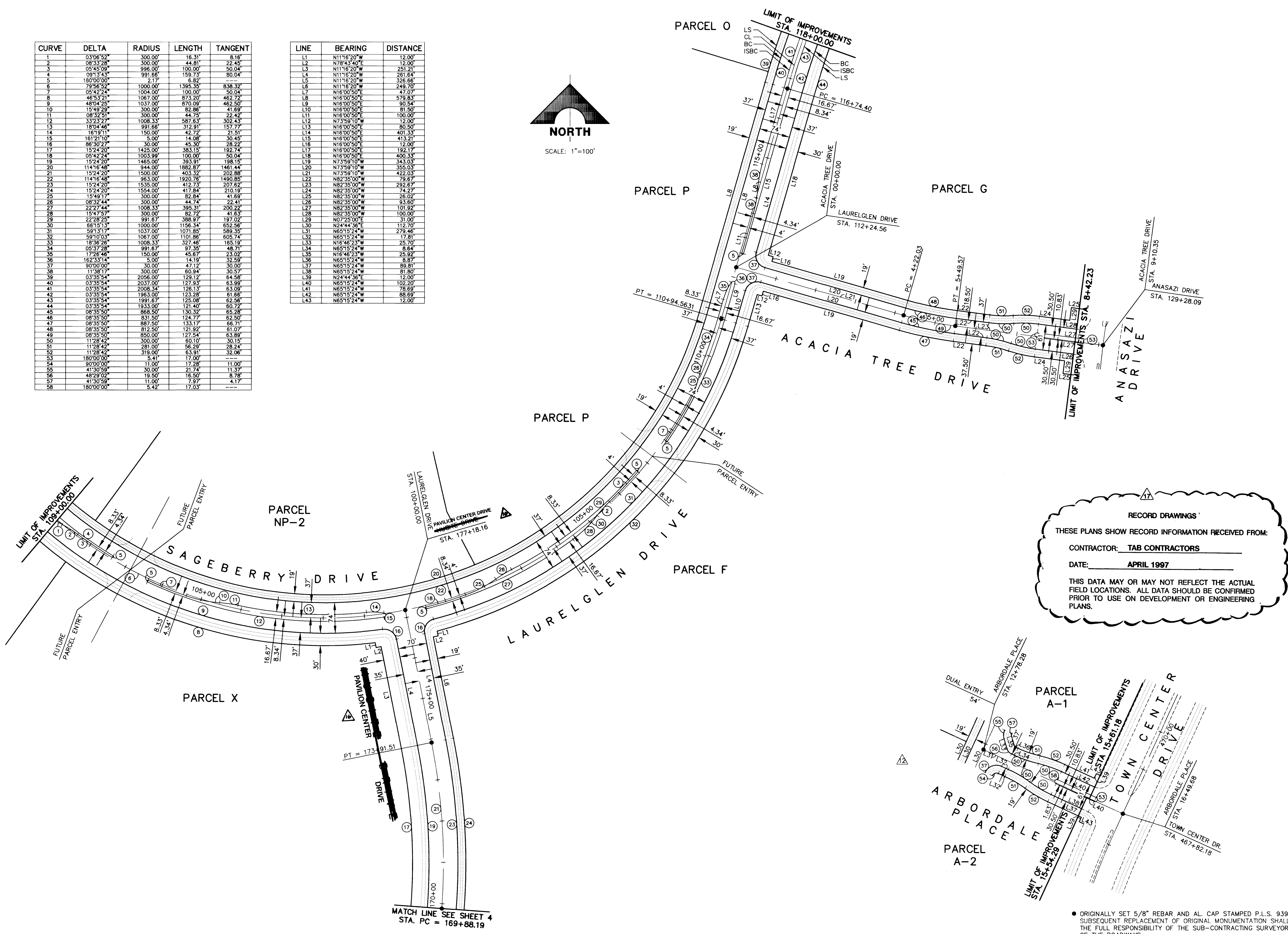
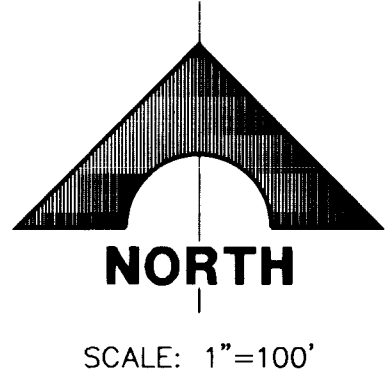


CURVE	DELTA	RADIUS	LENGTH	TANGENT
1	03'06"52"	300.00'	16.31'	8.16'
2	08'33"28"	300.00'	44.81'	22.45'
3	05'45"09"	996.00'	100.00'	50.04'
4	09'13"13"	991.66'	159.73'	80.04'
5	18'00'00"	2.17'	6.82'	---
6	79'56"52"	1000.00'	1395.35'	838.32'
7	05'42"24"	1004.00'	100.00'	50.04'
8	48'53"21"	1067.00'	873.20'	462.72'
9	48'04"25"	1037.00'	870.09'	462.50'
10	15'49"29"	300.00'	82.86'	41.69'
11	08'32"51"	300.00'	44.75'	22.42'
12	33'32'27"	1008.33'	387.63'	302.43'
13	18'04'46"	991.66'	312.91'	157.77'
14	16'19'11"	150.00'	42.72'	21.51'
15	16'11'19"	5.00'	14.08'	30.45'
16	06'30'27"	30.00'	45.30'	28.22'
17	15'24'20"	1425.00'	383.15'	192.74'
18	05'42'24"	1003.99'	100.00'	50.04'
19	15'24'20"	1465.00'	393.91'	198.15'
20	11'41'48"	944.00'	1882.81'	1461.44'
21	15'24'20"	1500.00'	403.32'	202.88'
22	11'41'48"	963.00'	1920.76'	1490.85'
23	15'24'20"	1535.00'	412.73'	207.62'
24	15'24'20"	1554.00'	417.84'	210.19'
25	15'49'17"	300.00'	82.84'	41.69'
26	08'32'44"	300.00'	44.74'	22.41'
27	22'27'44"	1008.33'	393.31'	200.22'
28	15'47'57"	300.00'	82.72'	41.63'
29	22'28'25"	991.67'	388.97'	197.02'
30	06'15'13"	1000.00'	1196.34'	852.56'
31	09'15'17"	1037.00'	1071.85'	586.35'
32	09'10'03"	1067.00'	1101.86'	605.74'
33	18'36'26"	1008.33'	327.46'	165.19'
34	05'37'28"	991.67'	97.35'	48.77'
35	17'28'46"	150.00'	45.67'	23.02'
36	162'33'14"	5.00'	14.19'	32.59'
37	09'00'00"	30.00'	47.12'	30.00'
38	11'38'17"	1037.00'	60.94'	30.57'
39	03'35'54"	2056.00'	129.12'	64.58'
40	03'35'54"	2037.00'	127.93'	63.99'
41	03'35'54"	2008.34'	126.13'	63.09'
42	03'35'54"	1963.00'	123.28'	61.68'
43	03'35'54"	1991.67'	125.08'	62.56'
44	03'35'54"	1933.00'	121.40'	60.72'
45	08'35'50"	868.50'	130.32'	65.28'
46	08'35'50"	831.50'	124.77'	62.50'
47	08'35'50"	887.50'	133.17'	66.71'
48	08'35'50"	812.50'	121.92'	61.07'
49	08'35'50"	850.00'	127.54'	63.89'
50	11'28'42"	300.00'	60.10'	30.15'
51	11'28'42"	281.00'	56.29'	28.24'
52	11'28'42"	319.00'	63.91'	32.06'
53	18'00'00"	5.41'	17.00'	---
54	09'00'00"	11.00'	17.28'	11.00'
55	41'30'59"	30.00'	21.74'	11.37'
56	48'29'02"	19.50'	16.50'	8.78'
57	41'30'59"	11.00'	17.00'	4.17'
58	18'00'00"	5.42'	17.00'	---

LINE	BEARING	DISTANCE
L1	N11°16'20"W	12.00'
L2	N78°43'40"E	12.00'
L3	N11°16'20"W	251.21'
L4	N11°16'20"W	261.64'
L5	N11°16'20"W	326.66'
L6	N11°16'20"W	249.70'
L7	N16°00'50"E	47.07'
L8	N16°00'50"E	579.83'
L9	N16°00'50"E	90.54'
L10	N16°00'50"E	81.50'
L11	N16°00'50"E	100.00'
L12	N7°59'10"W	12.00'
L13	N16°00'50"E	80.50'
L14	N16°00'50"E	401.33'
L15	N16°00'50"E	413.21'
L16	N16°00'50"E	12.00'
L17	N16°00'50"E	192.17'
L18	N16°00'50"E	400.33'
L19	N7°59'10"W	343.03'
L20	N7°59'10"W	355.03'
L21	N7°59'10"W	422.03'
L22	N82°35'00"W	79.67'
L23	N82°35'00"W	292.67'
L24	N82°35'00"W	74.27'
L25	N82°35'00"W	26.02'
L26	N82°35'00"W	93.60'
L27	N82°35'00"W	101.92'
L28	N82°35'00"W	100.00'
L29	N07°25'00"E	31.00'
L30	N24°44'36"E	112.70'
L31	N65°15'24"W	279.46'
L32	N65°15'24"W	17.81'
L33	N16°46'23"W	25.70'
L34	N65°15'24"W	8.84'
L35	N16°46'23"W	25.92'
L36	N65°15'24"W	8.87'
L37	N65°15'24"W	89.81'
L38	N65°15'24"W	81.80'
L39	N24°44'36"E	12.00'
L40	N65°15'24"W	102.20'
L41	N65°15'24"W	78.69'
L42	N65°15'24"W	88.69'
L43	N65°15'24"W	12.00'



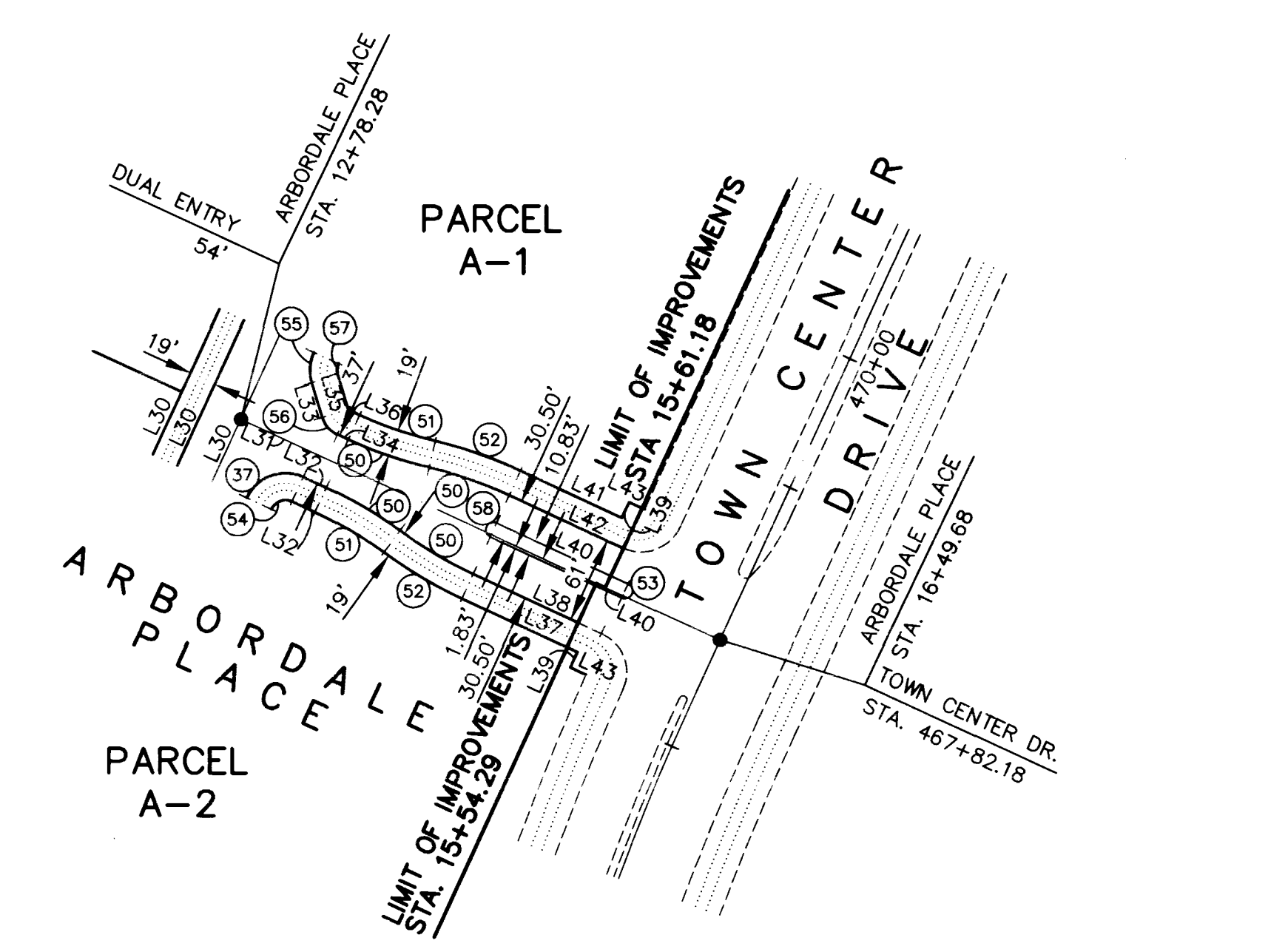
**RECORD DRAWINGS**

THESE PLANS SHOW RECORD INFORMATION RECEIVED FROM:

CONTRACTOR: **TAB CONTRACTORS**

DATE: **APRIL 1997**

THIS DATA MAY OR MAY NOT REFLECT THE ACTUAL FIELD LOCATIONS. ALL DATA SHOULD BE CONFIRMED PRIOR TO USE ON DEVELOPMENT OR ENGINEERING PLANS.



• ORIGINALLY SET 5/8" REBAR AND AL. CAP STAMPED P.L.S. 9390. SUBSEQUENT REPLACEMENT OF ORIGINAL MONUMENTATION SHALL BE THE FULL RESPONSIBILITY OF THE SUB-CONTRACTING SURVEYOR OF THE ROADWAYS.

<p>RECOMMENDED BY: ANDERSON W. ANDERSON</p> <p>DATE: 5/07</p> <p>REF. NO. 5071</p>	<p>DATE: 3/27/97</p> <p>DATE: 3/27/97</p> <p>DATE: 3/27/97</p> <p>DATE: 3/27/97</p>
<p><b>G. C. WALLACE, INC.</b> Engineering/Architecture 1555 SOUTH RAINBOW BLVD., LAS VEGAS, NEVADA 89102</p>	
<p><b>SUMMERLIN VILLAGE 11/12 THE ARBORS - UNIT 2A CONTROL PLAN 3</b></p>	
<p>SHEET <b>5</b> OF 6</p>	

JOB NO. 62011.212  
 DECEMBER 3, 1995 9:20:22 a.m.  
 Drawing: D:\11-12\_2A-D-12\112A-H5.DWG

