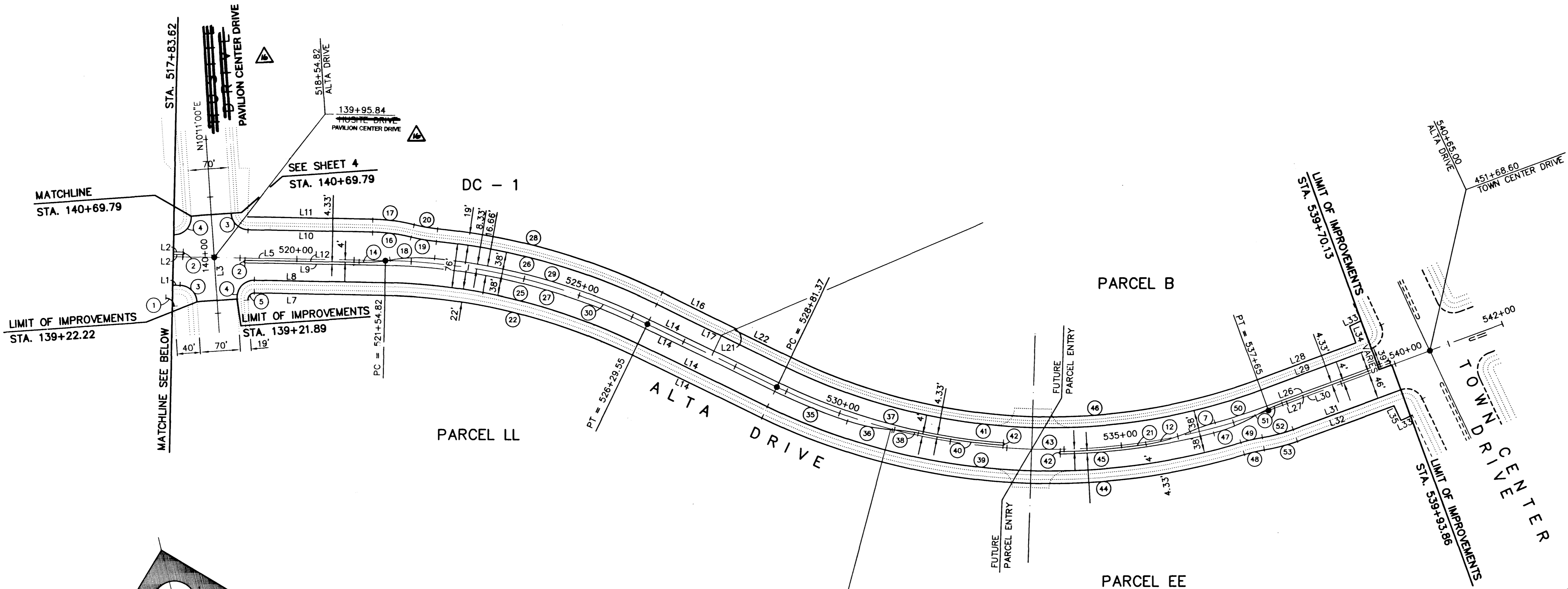


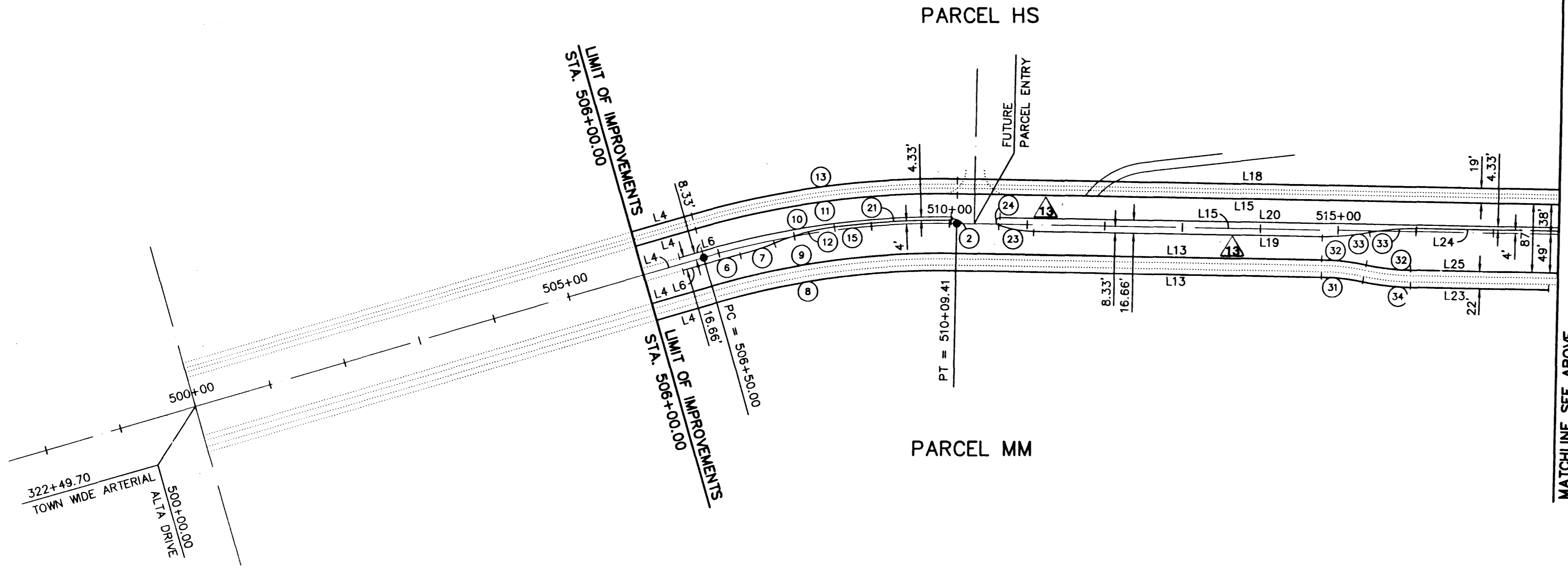
JOB NO. 62011.212 May 22, 1996 4:39:59 p.m. Drawing: C:\DWG\11-12\2A-1000\112A-13.DWG



RECORD DRAWINGS  
 THESE PLANS SHOW RECORD INFORMATION RECEIVED FROM:  
 CONTRACTOR: TAB CONTRACTORS  
 DATE: APRIL 1997  
 THIS DATA MAY OR MAY NOT REFLECT THE ACTUAL FIELD LOCATIONS. ALL DATA SHOULD BE CONFIRMED PRIOR TO USE ON DEVELOPMENT OR ENGINEERING PLANS.

CURVE	DELTA	RADIUS	LENGTH	TANGENT
1	85°00'00"	15.00'	22.25'	13.74'
2	180°00'00"	2.16'	6.79'	---
3	85°00'00"	30.00'	44.51'	27.48'
4	85°00'00"	30.00'	49.74'	32.74'
5	95°00'00"	11.00'	18.24'	12.00'
6	02°28'04"	1091.67'	46.38'	23.20'
7	08°48'13"	300.00'	46.10'	23.09'
8	17°09'29"	1040.00'	311.44'	156.90'
9	17°09'29"	1062.00'	318.03'	160.21'
10	16°46'39"	1108.33'	324.54'	163.44'
11	17°09'29"	1138.00'	340.79'	171.68'
12	15°21'43"	300.00'	80.43'	40.46'
13	17°09'29"	1157.00'	346.48'	174.55'
14	10°25'30"	300.00'	54.59'	27.37'
15	17°09'29"	1100.00'	329.41'	165.95'
16	12°58'24"	300.00'	67.93'	34.11'
17	12°58'24"	322.00'	72.91'	36.61'
18	14°51'53"	300.00'	77.83'	39.14'
19	08°32'01"	300.00'	44.69'	22.38'
20	08°32'01"	278.00'	41.41'	20.74'
21	07°47'05"	1104.00'	150.00'	75.12'
22	24°43'38"	1040.00'	448.83'	227.97'
23	17°25'58"	150.00'	45.64'	23.00'
24	162°34'02"	5.00'	14.19'	32.61'
25	24°43'38"	1062.00'	458.33'	232.78'
26	20°17'15"	1138.00'	402.95'	203.61'
27	24°43'38"	1091.67'	471.13'	239.29'
28	42°45'13"	1160.00'	410.74'	207.47'
29	20°17'15"	1108.33'	392.44'	198.30'
30	24°43'38"	1100.00'	474.73'	241.12'
31	10°59'17"	278.00'	53.31'	26.74'
32	10°59'17"	300.00'	57.53'	28.86'
33	11°38'08"	300.00'	60.92'	30.57'
34	10°59'17"	322.00'	61.75'	30.97'
35	07°03'58"	1108.33'	136.69'	68.43'
36	15°20'40"	300.00'	80.34'	40.41'
37	21°28'17"	1091.67'	408.46'	206.65'
38	08°48'50"	300.00'	46.15'	23.12'
39	42°45'13"	1138.00'	548.17'	445.45'
40	07°50'30"	1096.00'	150.00'	75.12'
41	46°01'32"	1062.00'	853.10'	451.07'
42	180°00'00"	2.17'	6.82'	---
43	46°01'32"	1100.00'	883.63'	467.21'
44	42°45'13"	1160.00'	865.58'	454.06'
45	13°59'45"	1108.33'	270.74'	136.04'
46	46°01'32"	1043.00'	837.84'	443.00'
47	15°11'00"	300.00'	78.50'	39.98'
48	07°22'57"	278.00'	35.82'	17.93'
49	07°22'57"	300.00'	38.65'	19.35'
50	05°00'58"	1091.67'	95.57'	47.82'
51	09°49'12"	300.00'	51.42'	25.77'
52	10°39'17"	300.00'	55.79'	27.97'
53	10°39'17"	322.00'	59.88'	30.03'

LINE	BEARING	DISTANCE
L1	N74°49'00"W	12.86'
L2	N74°49'00"W	17.19'
L3	N101°11'00"E	147.89'
L4	N89°01'31"E	80.00'
L5	N74°49'00"W	131.20'
L6	N89°01'31"E	30.00'
L7	N74°49'00"W	228.54'
L8	N74°49'00"W	228.80'
L9	N74°49'00"W	245.99'
L10	N74°49'00"W	218.28'
L11	N74°49'00"W	219.01'
L12	N74°49'00"W	200.00'
L13	N74°49'00"W	470.39'
L14	N50°05'22"W	251.82'
L15	N74°49'00"W	174.21'
L16	N50°05'22"W	143.77'
L17	N50°05'22"W	251.82'
L18	N74°49'00"W	174.11'
L19	N74°49'00"W	368.40'
L20	N74°49'00"W	715.86'
L21	N39°54'38"E	3.00'
L22	N50°05'22"W	108.06'
L23	N74°49'00"W	177.84'
L24	N74°49'00"W	182.81'
L25	N74°49'00"W	189.48'
L26	N83°53'06"E	205.13'
L27	N83°53'06"E	178.35'
L28	N83°53'06"E	183.47'
L29	N83°53'06"E	205.13'
L30	N83°53'06"E	228.86'
L31	N83°53'06"E	200.00'
L32	N83°53'06"E	178.22'
L33	N78°53'06"E	22.00'
L34	N06°23'40"W	31.00'
L35	N11°06'54"W	28.11'



**FINAL SUBMITTAL**

RECOMMENDED BY: CHRISTOPHER W. ANDERSON	DATE: 5/27/97	REV. NO.:	DATE:	REV. NO.:	DATE:	REV. NO.:	DATE:
PROJECT INFORMATION: VILLAGE 11/12 THE ARBORS - ST. MAE	DATE: 3-5-97	REV. NO.:	DATE:	REV. NO.:	DATE:	REV. NO.:	DATE:
DESCRIPTION: ADJUST BULL-NOSE OF MEDIAN ISLAND DUE TO ENTRY ADJUSTMENT	DATE: 1/17/97	REV. NO.:	DATE:	REV. NO.:	DATE:	REV. NO.:	DATE:

RECOMMENDED BY: **G.C. WALLACE, INC.**  
 Engineering/Architecture  
 1555 SOUTH RAINBOW BLVD./LAS VEGAS, NEVADA 89102

**VILLAGE 11/12 THE ARBORS - UNIT 2A**  
**CONTROL PLAN 1**

SHEET **3** OF 45

