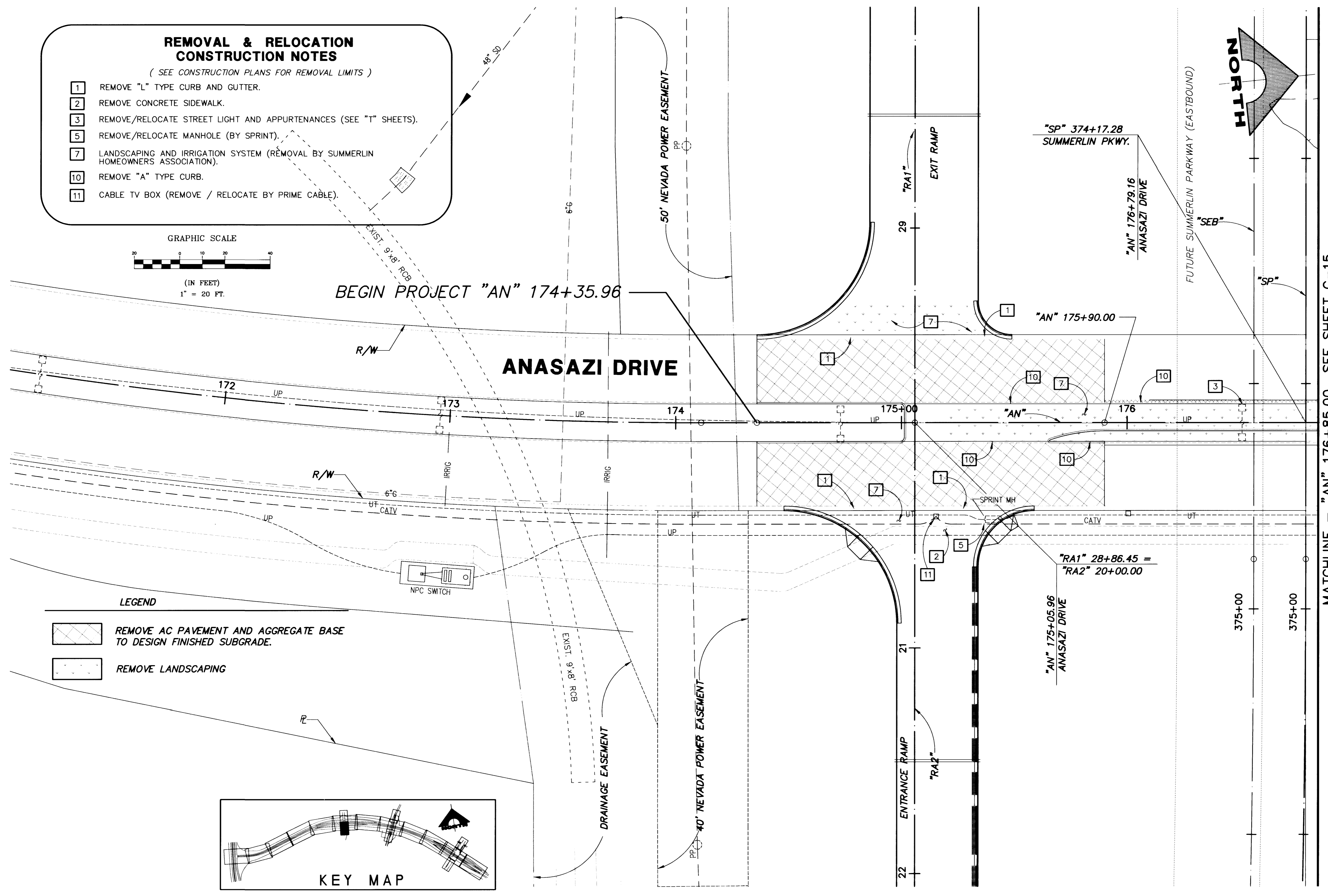
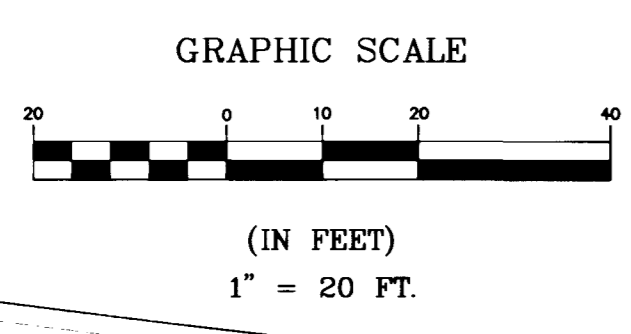


### REMOVAL & RELOCATION CONSTRUCTION NOTES

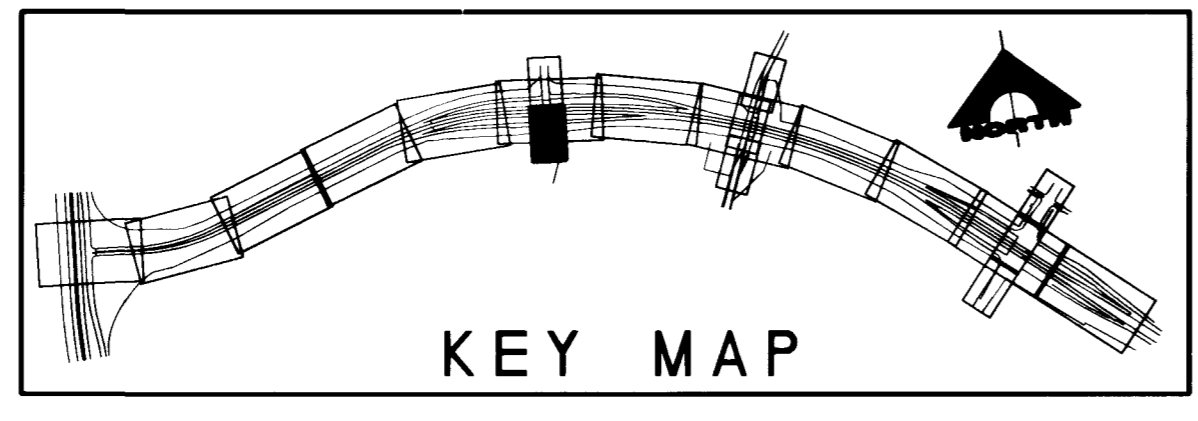
(SEE CONSTRUCTION PLANS FOR REMOVAL LIMITS)

- 1 REMOVE "L" TYPE CURB AND GUTTER.
- 2 REMOVE CONCRETE SIDEWALK.
- 3 REMOVE/RELOCATE STREET LIGHT AND APPURTENANCES (SEE "T" SHEETS).
- 5 REMOVE/RELOCATE MANHOLE (BY SPRINT).
- 7 LANDSCAPING AND IRRIGATION SYSTEM (REMOVAL BY SUMMERLIN HOMEOWNERS ASSOCIATION).
- 10 REMOVE "A" TYPE CURB.
- 11 CABLE TV BOX (REMOVE / RELOCATE BY PRIME CABLE).



**LEGEND**

- REMOVE AC PAVEMENT AND AGGREGATE BASE TO DESIGN FINISHED SUBGRADE.
- REMOVE LANDSCAPING



MATCHLINE - "AN" 176+85.00 SEE SHEET C-15

	<p>RECOMMENDED BY: ALLEN PAVEN DATE: 9-21-98</p>								
<p><b>CITY OF LAS VEGAS</b> SUMMERLIN PARKWAY WESTERN BELTWAY TO TOWN CENTER DR. REMOVAL AND RELOCATION PLAN ANASAZI DRIVE</p>	<p><b>G. C. WALLACE, INC.</b> Engineering/Architecture 1555 SOUTH RAINBOW BLVD., LAS VEGAS, NEVADA 89102</p>								
<p>SHEET <b>C-14</b> 107V-2975 SHT 14 OF 177</p>	<table border="1" style="width: 100%; border-collapse: collapse;"> <thead> <tr> <th>REV.</th> <th>DATE</th> <th>DESCRIPTION</th> <th>APPROVAL</th> </tr> </thead> <tbody> <tr> <td> </td> <td> </td> <td> </td> <td> </td> </tr> </tbody> </table>	REV.	DATE	DESCRIPTION	APPROVAL				
REV.	DATE	DESCRIPTION	APPROVAL						

JOB NO. 62051

