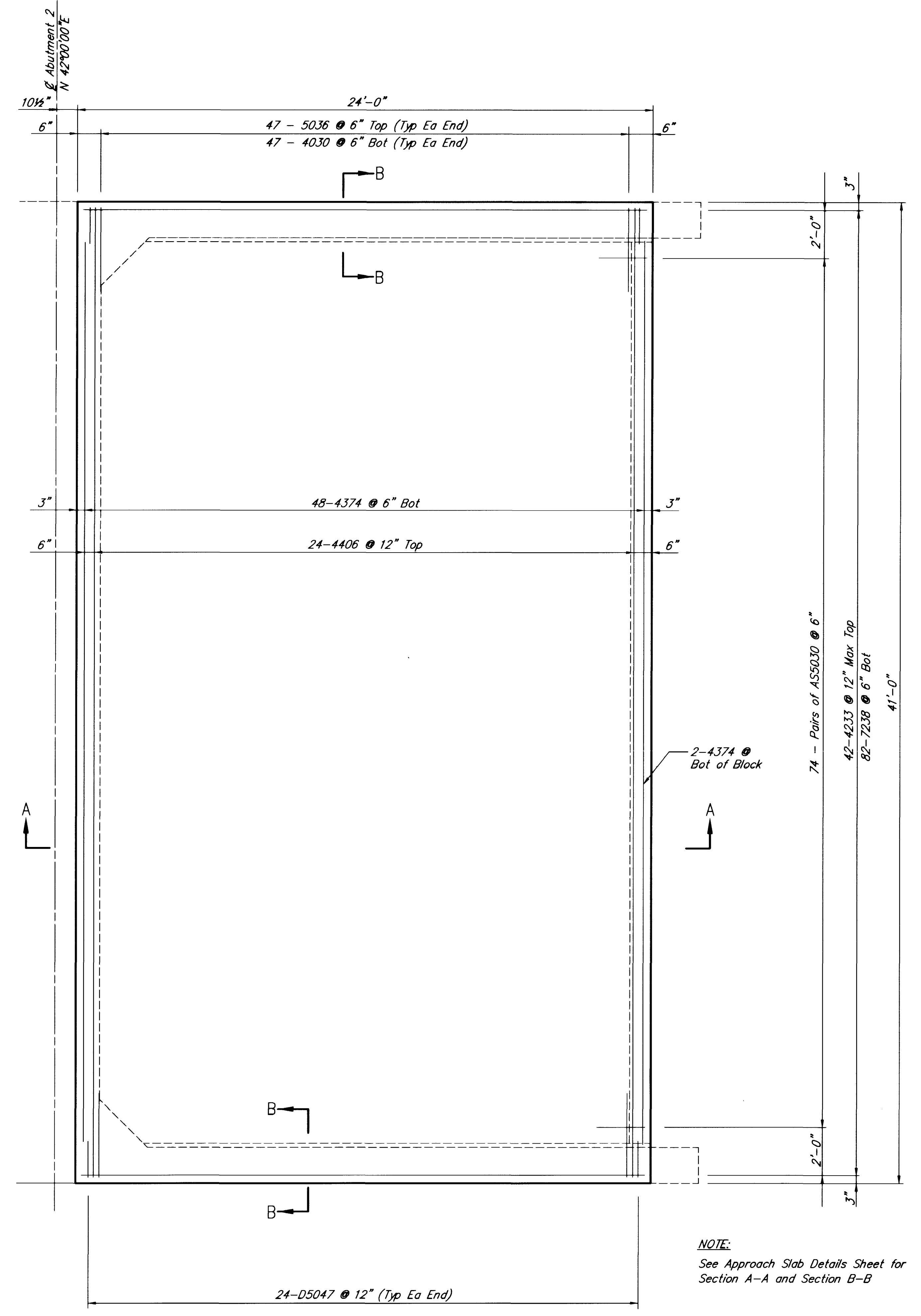
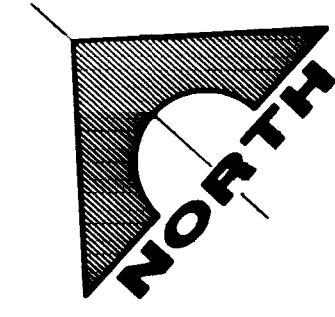


APPROACH SLAB @ ABUTMENT 1



APPROACH SLAB @ ABUTMENT 2

NOTE:
See Approach Slab Details Sheet for
Section A-A and Section B-B

REVISION	DATE	DESCRIPTION

RECOMMENDED BY: **BRIAN L. SCHMIT**
 PROFESSIONAL ENGINEER - CIVIL
 LICENSE NO. 10747
 EXPIRES 09/30/07

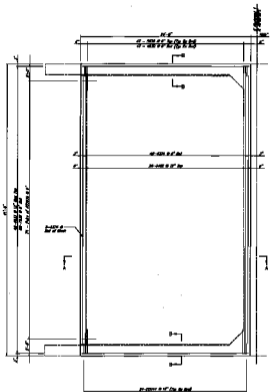
G.C. WALLACE, INC.
 Engineering/Architecture
 1555 SOUTH RAINBOW BLVD./LAS VEGAS, NEVADA 89102
 (702) 363-1200

CITY OF LAS VEGAS
 SUMMERLIN PARKWAY
 SUMMERLIN PARKWAY OVER TOWN CENTER DRIVE
 "SWB" & "SEB" APPROACH SLAB PLANS

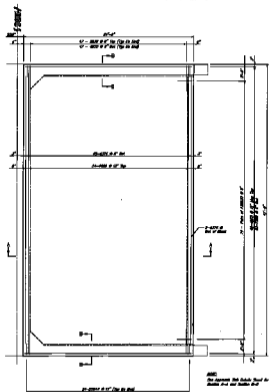
SHEET
B-23
 107V-2975
 OF 177 SHEETS

JOB NO. 62051.211B, 412.400

14884



APPROACH SLAB @ ABUTMENT 1



APPROACH SLAB @ ABUTMENT 2

NOTE:
See General Note 10.010 for
Details and see Section 10.010

CITY OF LAS VEGAS
 ENGINEERING DEPARTMENT
 225 N. RAY BLVD., SUITE 1000
 LAS VEGAS, NV 89101

PROJECT: LAS VEGAS INTERNATIONAL AIRPORT
 DRAWING: APPROACH SLAB PLAN

DATE: 11/20/08

SCALE: AS SHOWN

DESIGNED BY: [Signature]

CHECKED BY: [Signature]

APPROVED BY: [Signature]