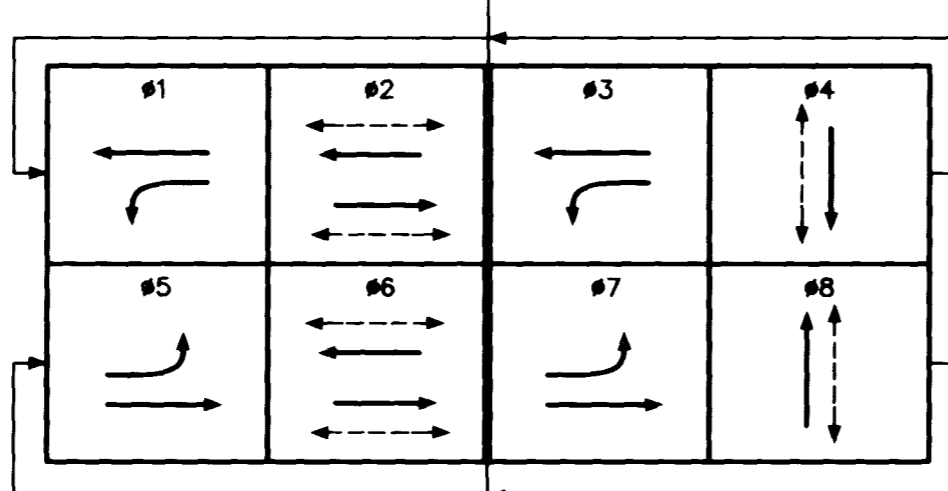




R3-8(S)  
30" X 30"

ØOLA = Ø1 + Ø2 + Ø3  
ØOLB = Ø1 + Ø3  
ØOLC = Ø5 + Ø6 + Ø7  
ØOLD = Ø5 + Ø7

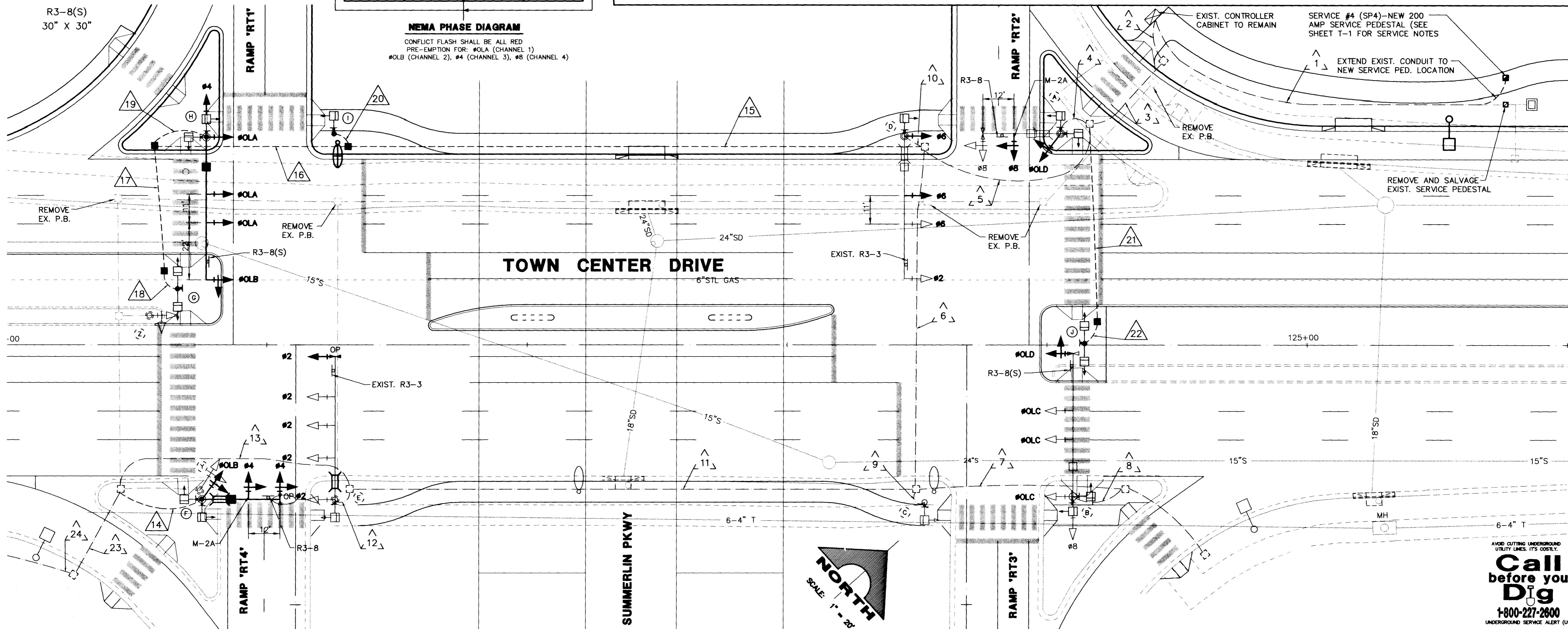


**NEMA PHASE DIAGRAM**

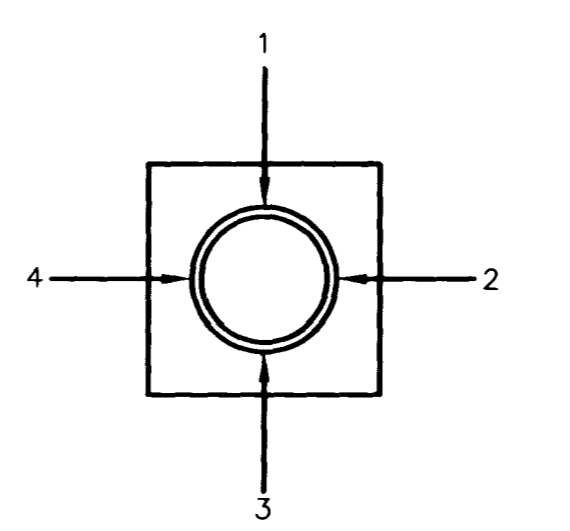
CONFLICT FLASH SHALL BE ALL RED  
PRE-EMPTION FOR: ØOLA (CHANNEL 1)  
ØOLB (CHANNEL 2), Ø4 (CHANNEL 3), Ø8 (CHANNEL 4)

**TRAFFIC SIGNAL NOTES**

- ALL NEW PULLBOXES SHALL BE NO. 7, UNLESS OTHERWISE SHOWN.
- IF THE IMPROVEMENTS NECESSITATE THE OBLITERATION, TEMPORARY REMOVAL, OR RELOCATION OF ANY EXISTING TRAFFIC MARKINGS, SUCH PAVEMENT MARKINGS SHALL BE RESTORED OR REPLACED WITH LIKE MATERIALS TO THE SATISFACTION OF THE CITY ENGINEER.
- CONTRACTOR SHALL FURNISH TWO (2) INTERNALLY ILLUMINATED STREET NAME SIGNS PER STD. DWG. NOS. 404.416 AND 404.417 AND TWO (2) BLOCK NUMBER SIGNS PER STD. DWG. NO. 404.420 ON POLES "E" AND "F". CONTRACTOR SHALL FURNISH TWO (2) SIGN PANELS IN EXISTING DOUBLE-FACED CANISTER ON POLE "A". SEE TABLE FOR STREET NAME SIGNS AND BLOCK NUMBERS. INTERNALLY ILLUMINATED SIGNS SHALL BE WIRE TO THE LUMINAIRE PHOTO CELL ON SAME POLE WITH #10 AWG COPPER STRANDED WIRE.
- EXISTING VIDEO DETECTION SYSTEM SHALL BE MODIFIED TO ACCOMMODATE TWO (2) ADDITIONAL CAMERAS. MOUNT NEW CAMERAS (SEE POLE SCHEDULE) IN ACCORDANCE WITH MANUFACTURER'S RECOMMENDATIONS. COAXIAL CABLE AND 3-#14 AWG S/J CORD SHALL BE RUN FROM THE CONTROLLER TO EACH CAMERA. COAXIAL CABLE SHALL BE BELDEN 8281 WITH BNC CONNECTORS OR APPROVED EQUIVALENT.
- EXISTING INTERCONNECT ON TOWN CENTER DRIVE SHALL BE MAINTAINED FROM SUMMERLIN PARKWAY TO COVINGTON CROSS DRIVE.
- EXISTING EMERGENCY VEHICLE PRIORITY CONTROL SYSTEM SHALL BE MODIFIED TO ACCOMMODATE ADDITIONAL OPTICAL DETECTOR ON POLES "E" AND "F". NEW OPTICAL DETECTORS SHALL BE MOUNTED ON TOP OF THE LEFT-MOST SIGNAL HEAD ON MAST ARMS. DETECTOR CABLE SHALL BE RUN FROM THE CONTROLLER TO THE OPTICAL DETECTORS AS SHOWN IN THE CONDUIT AND WIRE SCHEDULE.
- INTERSECTION LUMINAIRES SHALL BE 400 WATT/120V HPS. LUMINAIRES AND LUMINAIRE ARMS SHALL CONFORM TO SUMMERLIN IMPROVEMENT STD. DWG. NOS. E-1 AND E-2. WIRING FOR LUMINAIRES SHALL BE AS FOLLOWS: 2-#4 AWG (ONE BLACK, ONE WHITE) SHALL BE RUN FROM THE 200 AMP SERVICE PEDESTAL TO THE CONTROLLER CABINET. 4-#10 THW CONDUCTORS SHALL BE TAPPED OFF THE BLACK #4 INTO FUSE HOLDERS (10 AMP FUSES INSTALLED). EACH FUSE HOLDER WILL POWER AN INDIVIDUAL LUMINAIRE WITH 1-#10. THE WHITE #4 SHALL BE USED AS THE NEUTRAL FOR ALL INTERSECTION LUMINAIRES. NO SPLICES BETWEEN CABINET AND LUMINAIRE.
- TRAFFIC SIGNAL POLES SHALL BE FINISHED WITH AMERLOCK 400/AMERSHIELD SYSTEM NO. 5442D "HUMMINGBIRD BROWN" OR APPROVED EQUIVALENT.
- ALL SALVAGED MATERIALS SHALL BE DELIVERED TO CITY OF LAS VEGAS YARDS, 3100 E. BONANZA RD.
- TRAFFIC SIGNAL CABLE SHALL BE 15 OR 25 CONDUCTOR #14 AWG SOLID CABLE AND CONFORM TO IMSA SPEC. NO. 20-1.
- CONDUIT ROUTING SHOWN IS SCHEMATIC FOR THE PURPOSE OF CLARITY AND MAY DIFFER FROM ACTUAL INSTALLATION.



WIRE & CABLE	FROM	TO	VIA CONDUIT																							
			1	2	3	4	5	6	7	8	9	10	11	12	13	14	15	16	17	18	19	20	21	22	23	24
4-#4 (2 WHITE, 2 BLACK) 1-#8 GND. THW	SERVICE PED.	CONTROLLER	X																							
EXISTING	CONTROLLER	POLE A		X	X	X																				
EXISTING	CONTROLLER	POLE B		X	X	X	X	X	X																	
EXISTING	CONTROLLER	POLE C		X	X	X	X	X																		
EXISTING	CONTROLLER	POLE D		X	X	X																				
EXISTING	CONTROLLER	POLE E		X	X	X	X					X	X													
25 C. #14, 2-#10 THW 3-#14 AWG S/J, COAXIAL	CONTROLLER	POLE F		X	X	X	X					X	X	X												
15 C. #14	CONTROLLER	POLE G		X	X	X									X	X	X	X								
25 C. #14, 2-#10 THW 3-#14 AWG S/J, COAXIAL	CONTROLLER	POLE H		X	X	X									X	X	X					X				
15 C. #14	CONTROLLER	POLE I		X	X	X									X								X			
15 C. #14	CONTROLLER	POLE J		X	X	X									X								X	X		
OPTICAL CABLE(E)	CONTROLLER	POLE A		X	X	X																				
OPTICAL CABLE(E)	CONTROLLER	POLE B		X	X	X	X	X	X																	
OPTICAL CABLE	CONTROLLER	POLE E		X	X	X	X					X	X													
OPTICAL CABLE	CONTROLLER	POLE F		X	X	X	X					X	X	X												
INTERCONNECT (E)	CONTROLLER	CONTROLLER AT TOWN CTR/COV. CROSS		X	X	X	X					X	X											X	X	
CONDUIT SIZE			(E)	(E)	(E)	(E)	(E)	(E)	(E)	(E)	(E)	(E)	(E)	(E)	(E)	2"	2-3"	2-3"	2-3"	2"	2"	2"	2-3"	2"	(E)	(E)
NOTE: (E) INDICATES EXISTING CONDUIT																										
A NO. 8 GREEN GROUNDING WIRE SHALL BE RUN FROM THE CONTROLLER CABINET TO EACH SIGNAL POLE BASE.																										



**QUADRANT LOCATOR**  
ARM OR SIGNAL LOCATION (TOP VIEW)

POLE	LEGEND	WIDTH	BLOCK #
* (D)	SUMMERLIN PKWY	8-FOOT DOUBLE FACE	EXIST.
(E)	SUMMERLIN PKWY	8-FOOT DOUBLE FACE	W 9600
(F)	TOWN CENTER	8-FOOT SINGLE FACE	N 1300

\*PANELS ONLY

POLE	LOCATION STATION (OFFSET)	POLE				SIGNALS (VEH.)		SIGNALS (PED.)		PEDESTRIAN PUSH BUTTON		REMARKS	
		TYPE	SIGNAL QUAD.	ARM LENGTH	LUM. QUAD.	ARM LENGTH	TYPE	QUAD.	TYPE	QUAD.	SIGN		
(A)	EXISTING	XX(E)	4(E)	30'(E)	4(E)	10'(E)	M-2(E) MAST ARM 1	M-2A B-1T	W-3T	2	1(Ø6) 2(Ø8)	RT. LT.	REMOVE EX. M-2 HEAD (12' FROM END) AND SIGNS ON EXIST. MAST ARM. INSTALL R3-8, M-2A HEAD, PED. HEADS, SIGNS AND PUSHBUTTONS PHASE OLD HEAD SHALL HAVE ALL ARROW INDICATIONS.
(B)	EXISTING	XXA(E)	1(E)	55'(E)	1(E)	10'(E)	M-2 MAST ARM 2	M-2(E) B-2T(E)	W-3T	3	2(Ø8) 3(Ø6)(E)	RT. LT.(E)	REMOVE EX. PED. HEAD ON EXISTING POLE. INSTALL M-2 HEAD (ØOLD), W-3T PED. HEAD, PUSHBUTTON AND SIGN. MOUNT R3-8(S) ON MAST ARM. PHASE OLD HEAD SHALL HAVE ALL ARROW INDICATIONS.
(C)	EXISTING	1-B(E)	-	-	-	-	-	-	W-1T(E)	POST TOP(E)	3(Ø6)(E)	RT.(E)	MAINTAIN EXISTING POLE.
(D)	EXISTING	XXA(E)	3(E)	55'(E)	3(E)	10'(E)	M-2 MAST ARM 1	M-2 B-1T	W-0T	1	1(Ø6)	LT.	INSTALL M-2 HEAD, PED HEAD, PUSHBUTTON AND SIGN ON EXISTING POLE.
(E)	EXISTING	XXA(E)	1(E)	55'(E)	4(E)	15'(E)	M-2 MAST ARM 3	M-2(E) B-1T	W-0T(E)	3(E)	3(Ø2)(E)	LT.(E)	INSTALL M-2 HEAD (Ø2) AT END OF MAST ARM. STREET NAME SIGN AND BLOCK # SIGN ON EXISTING POLE. MOUNT OPTICAL DETECTOR (1-WAY) POINTING SOUTH.
(F)	TOWN CENTER 129+25 59' LT.±	XX	2	30'	2	10'	M-2 MAST ARM 4	M-2A B-1T	W-3T	4	3(Ø2) 4(Ø4)	RT. LT.	MOUNT OPTICAL DETECTOR (1-WAY) AND R3-8 ON MAST ARM. PHASE 4 HEAD AT END OF MAST ARM SHALL GREEN AND YELLOW ARROW INDICATIONS. MOUNT CAMERA FOR Ø4 ON LUMINAIRE ARM. SEE NOTE 4.
(G)	TOWN CENTER 129+34 21.5' RT.±	1-B	-	-	-	-	-	-	W-2T	POST TOP	2(Ø4)	LT./RT.	
(H)	TOWN CENTER 128+74 81.5' RT.±	XXA	3	55'	3	10'	M-2(3) MAST ARM 1	B-2T	W-3T	1	1(Ø2) 4(Ø4)	LT. RT.	MOUNT R3-8(S) ON MAST ARM. PHASE ØLB HEAD SHALL ALL ARROW INDICATIONS. MOUNT CAMERA FOR ØOLA & ØOLB ON LUMINAIRE ARM. SEE NOTE 4. PHASE ØLA HEADS SHALL HAVE GEOMETRICALLY PROG. LOUVERS.
(I)	TOWN CENTER 128+74 81.5' RT.±	1-B	-	-	-	-	-	-	W-1T	POST TOP	1(Ø2)	RT.	
(J)	TOWN CENTER 125+86 0.5' RT	1-B	-	-	-	-	-	-	W-1T	POST TOP	4(Ø8)	LT./RT.	
(Y)	EXISTING	1-A(E)	-	-	-	-	A-2T(E)	POST TOP (E)	(E)	(E)	(E)	(E)	REMOVE EXISTING POLE.
(Z)	EXISTING	1-A(E)	-	-	-	-	A-2T(E)	POST TOP (E)	-	-	-	-	REMOVE EXISTING POLE.

Call before you Dig  
1-800-227-2600  
UNDERGROUND SERVICE ALERT (USA)

CITY OF LAS VEGAS  
SUMMERLIN PARKWAY  
WESTERN BELTWAY TO TOWN CENTER DR.  
TRAFFIC SIGNAL PLAN  
TOWN CENTER DRIVE INTERCHANGE

SHEET  
**T-9**  
107V-2975  
SHT 105 OF 177

G.C. WALLACE, INC.  
Engineering/Architecture  
1525 SOUTH RAINBOW BLVD., LAS VEGAS, NEVADA 89102

DATE: 02/27/08  
REV: 01/27/08  
SCALE: 1" = 20'

APPROVAL: [Signature]  
DATE: 09-18-08  
REV: 01-27-08

JOB NO. 62051

14864

