

REDUCED PRESSURE PRINCIPLE ASSEMBLY-1 1/2"
 APPROVED REDUCED PRESSURE PRINCIPLE ASSEMBLY(S) SHALL BE INSTALLED PER THE DISTRICT'S STANDARD PLATE NO. 11A. NO WATER SHALL BE TAKEN FROM A SERVICE REQUIRING BACKFLOW PREVENTION UNTIL THE REDUCED PRESSURE PRINCIPLE HAS BEEN SUCCESSFULLY TESTED BY THE LVWWD. ANY BLOCK WALL OR OTHER FENCE MATERIAL SHALL BE DESIGNED AND CONSTRUCTED AROUND THE OUTSIDE OF THE CASSEMENTS) SO AS TO ALLOW THE DISTRICT ACCESS FROM THE ADJACENT RIGHT-OF-WAY.

CURVE DATA (1) INDICATES CURVE NUMBER

CURVE	DELTA	RADIUS	LENGTH	TANGENT
1	05:26:52"	1562.00'	148.52'	74.31'
2	05:26:52"	1532.00'	145.87'	72.89'
3	10:12:27"	1601.56'	285.29'	143.02'
4	10:12:27"	1631.36'	290.87'	145.60'
5	08:56:12"	1600.00'	249.58'	125.03'
6	07:09:42"	1635.00'	204.37'	102.30'
7	07:13:40"	1634.00'	203.84'	102.08'
8	18:00:00"	2.83'	8.89'	---
9	05:26:52"	1591.67'	151.34'	75.73'
10	05:26:52"	1597.33'	150.00'	75.00'
11	07:10:40"	1600.00'	200.44'	100.35'
12	00:21:29"	300.00'	1.87'	0.94'
13	00:21:29"	300.00'	42.01'	23.27'
14	05:33:34"	30.00'	50.04'	33.08'
15	04:40:14"	1649.00'	134.42'	67.25'
16	00:22:11"	300.00'	1.84'	0.93'
17	04:37:58"	1658.00'	134.88'	67.48'
18	00:21:08"	319.00'	1.98'	0.98'

NOTE: CURVE DATA REPRESENTS PARTIAL CURVE, THIS SHEET ONLY.

- CONSTRUCTION NOTES**
- IMPROVEMENTS**
- (1) INSTALL A.C. PAVEMENT PER STREET SECTIONS, SEE SHEET 32
 - (2) INSTALL "L" TYPE CURB & GUTTER (S-47)
 - (3) INSTALL "A" TYPE ISLAND CURB (S-30)
 - (4) INSTALL HANDICAP RAMP CURB DEPRESSION (S-29)
 - (5) ADJUST EXISTING FACILITY TO GRADE
 - (6) CONCRETE ENCASEMENT (C-33)
 - (7) ADJUST EXISTING TEST STATION TO GRADE (A-28)

- WATER**
- (10) INSTALL CAP W/ 2" BLOW-OFF ASSEMBLY
 - (11) INSTALL FIRE HYDRANT ASSEMBLY (U-33)
 - (12) INSTALL 12" GATE VALVE & BOX (U-34)
 - (13) INSTALL 10" GATE VALVE & BOX (U-34)
 - (14) INSTALL 12" X 10" REDUCER
 - (24) INSTALL 12" CROSS

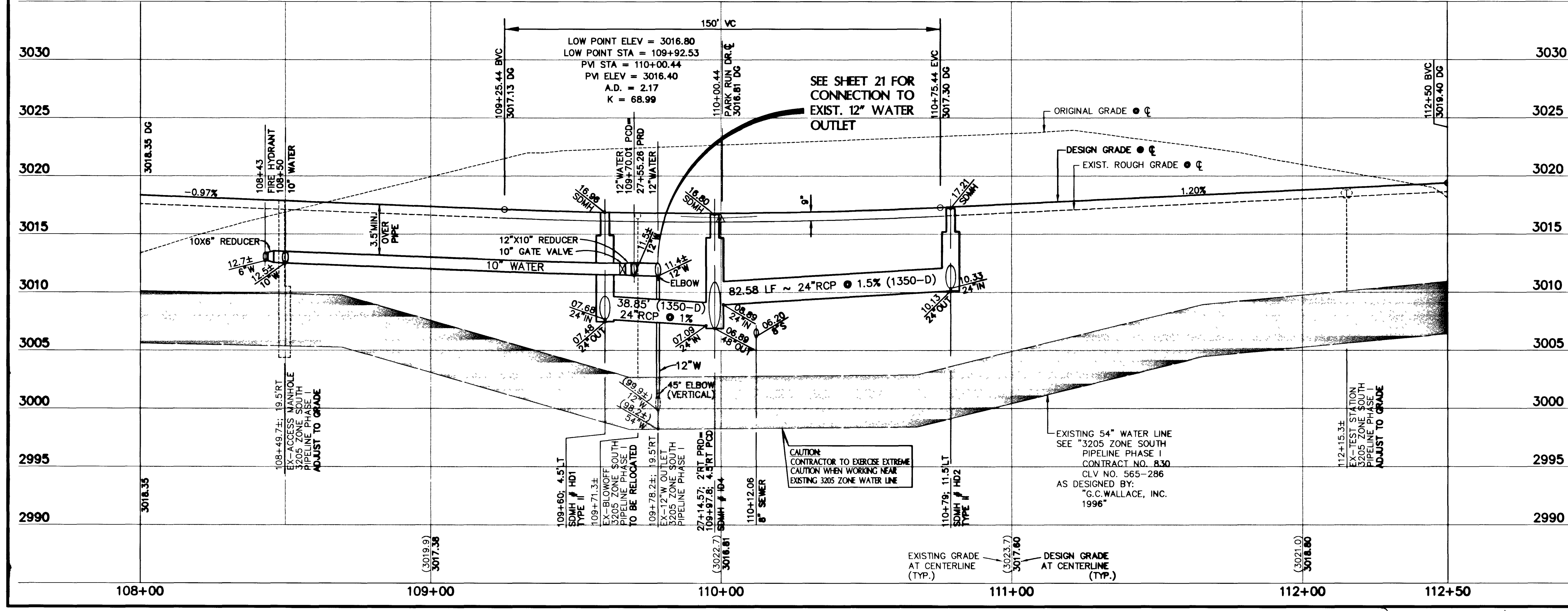
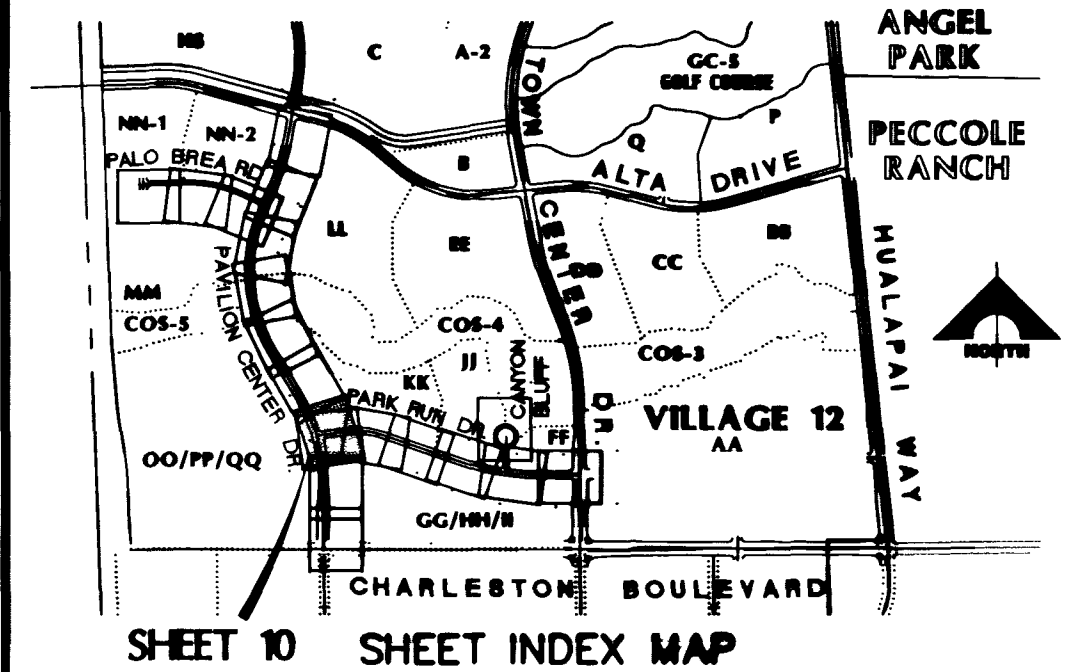
- STORM DRAIN**
- (30) INSTALL TYPE II STORM DRAIN MANHOLE (D1-DA)
 - (35) INSTALL MODIFIED TYPE "C" DROP INLET (D-3)

- STREET LIGHTING**
- (40) STREET LIGHT OR COMMON TRENCH, SEE ELECTRICAL PLAN
 - (41) SINGLE STREET LIGHT, SEE ELECTRICAL PLAN (E-2)
 - (42) DOUBLE STREET LIGHT, SEE ELECTRICAL PLAN

- IRRIGATION**
- (45) BANK "A"; 1-6" & 2-4" SDR35 PVC
- STREET LIGHTING**
- (51) INSTALL NO. 5 PULLBOX (E-32)
 - (52) INSTALL (2) 3" CONDUIT FOR TRAFFIC SIGNAL

NOTE TO CONTRACTOR:

- ALL EXISTING UTILITY CROSSINGS MUST BE VERIFIED PRIOR TO CONSTRUCTION OF ANY MAIN LINES OR LATERALS THAT MAY BE ADVERSELY EFFECTED. ANY DISCREPANCIES IN LOCATION AND/OR ELEVATION MUST BE PROVIDED TO THE ENGINEER FOR ACCEPTANCE PRIOR TO CONSTRUCTION.
- TOPOGRAPHY SHOWN HEREIN REFLECTS ORIGINAL EXISTING TOPOGRAPHY. ACTUAL FIELD CONDITIONS INCLUDE SITE ROUGH GRADING.
- ALL COMMON LOTS AS SHOWN HEREIN TO BE PRIVATELY MAINTAINED BY THE H.O.A.
- ALL WATER LINE GATE VALVES, SERVICE GATE VALVES, AND FIRE HYDRANT GATE VALVES ARE TO BE CONSTRUCTED UNDER A.C. PAVEMENT. IT IS THE CONTRACTOR'S RESPONSIBILITY TO VERIFY THAT ALL WATER VALVES CANS DO NOT CREATE CONFLICTS WITH THE PROPOSED CURB LINE PRIOR TO PLACEMENT OF CONCRETE. ALL WATER FACILITIES SHOWN IN THESE DRAWINGS HAVE BEEN "SCALED-UP" FOR CLARITY ONLY.



C:\DWG\12\UNIT-2C\IMPROV\1200P10.FRT: FRI 14 17:30:12 1997 BY: OT

100% SUBMITTAL 03-08-97

RECOMMENDED
 BEST A. HUGHES
 10298
 P.E. NO. DATE REV. DATE DESCRIPTION

G.C. WALLACE, INC.
 Engineering/Architecture
 1555 SOUTH RAINBOW BLVD. LAS VEGAS, NEVADA 89102 (702) 363-1200
 SUMMERLIN DIVISION (702) 363-0991

SUMMERLIN
 VILLAGE 12 UNIT 2C IMPROVEMENTS
 PAVILION CENTER DRIVE
 PLAN & PROFILE
 STA 108+00 TO 112+50

SHEET
10
 SHT 10 OF 41

JOB NO. 89011214

11-31-50 107Y-4463-2C

