

CURVE DATA ① INDICATES CURVE NUMBER

CURVE	DELTA	RADIUS	LENGTH	TANGENT
1	06°42'22"	1601.38'	187.43'	93.82'
2	06°41'51"	1631.38'	190.70'	95.46'
3	06°14'48"	1600.00'	174.44'	87.31'
4	06°14'48"	1635.00'	178.26'	89.22'
5	06°14'48"	1654.00'	180.33'	90.29'

NOTE: CURVE DATA REPRESENTS PARTIAL CURVE, THIS SHEET ONLY.

CONSTRUCTION NOTES

- IMPROVEMENTS**
- ① INSTALL A.C. PAVEMENT PER STREET SECTIONS, SEE SHEET 32
 - ② INSTALL "L" TYPE CURB & GUTTER (S-47)
 - ③ ADJUST EXISTING FACILITY TO GRADE

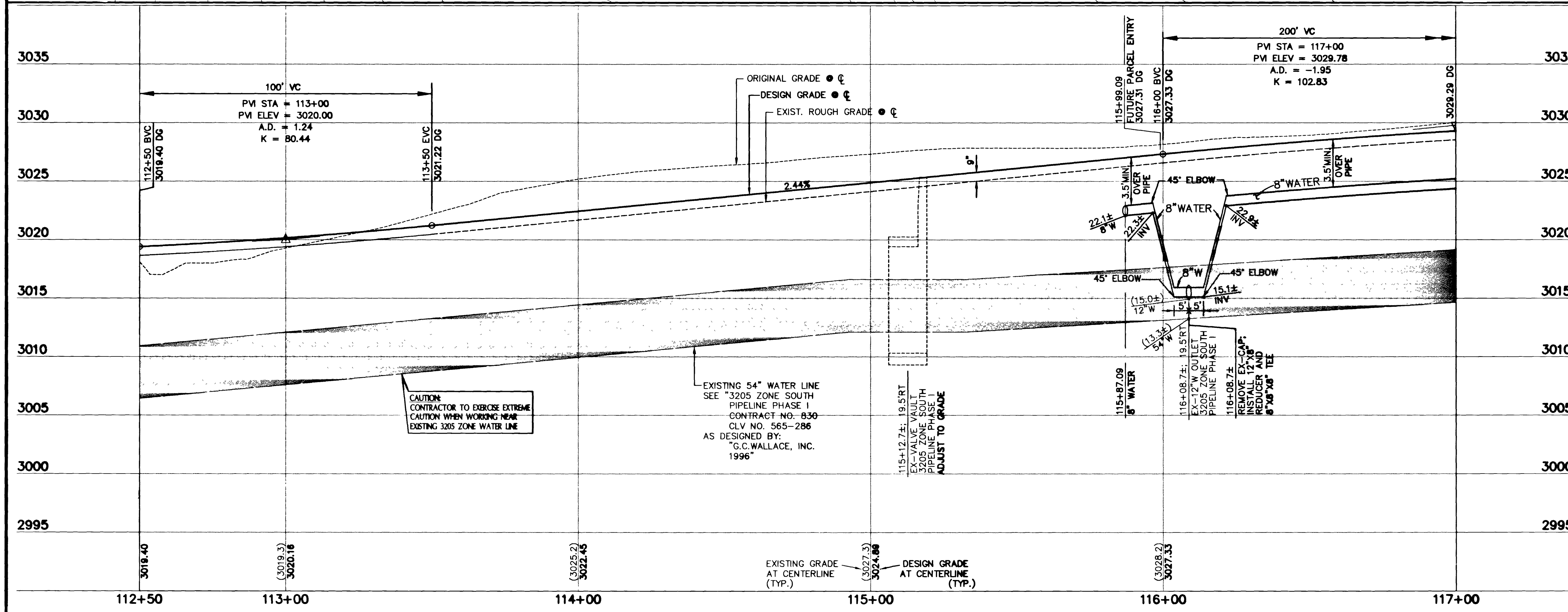
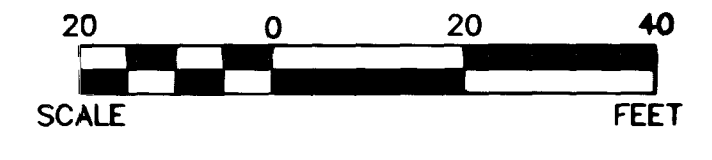
- WATER**
- ④ INSTALL CAP W/ 2" BLOW-OFF ASSEMBLY
 - ⑤ INSTALL 8" GATE VALVE & BOX (U-24)
 - ⑥ INSTALL 8" X 8" X 8" TEE
 - ⑦ INSTALL 12" X 8" REDUCER

- STREET LIGHTING**
- ⑧ STREET LIGHT OR COMMON TRENCH, SEE ELECTRICAL PLAN
 - ⑨ SINGLE STREET LIGHT, SEE ELECTRICAL PLAN (E-2)

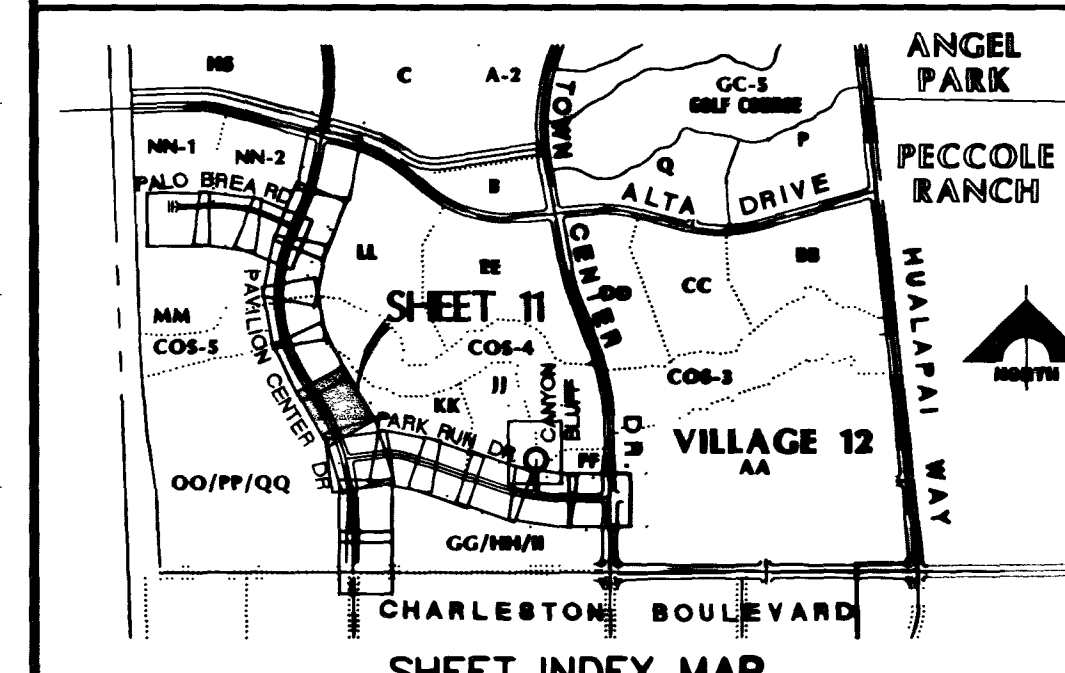
- IRRIGATION**
- ⑩ BANK "A": 1-6" & 2-4" SDR35 PVC

PAVILION CENTER DRIVE

SCALE: HORIZ. 1" = 20'
VERT. 1" = 5'



- NOTE TO CONTRACTOR:**
- ALL EXISTING UTILITY CROSSINGS MUST BE VERIFIED PRIOR TO CONSTRUCTION OF ANY MAIN LINES OR LATERALS THAT MAY BE ADVERSELY EFFECTED. ANY DISCREPANCIES IN LOCATION AND/OR ELEVATION MUST BE PROVIDED TO THE ENGINEER FOR ACCEPTANCE PRIOR TO CONSTRUCTION.
 - TOPOGRAPHY SHOWN HEREIN REFLECTS ORIGINAL EXISTING TOPOGRAPHY. ACTUAL FIELD CONDITIONS INCLUDE SITE ROUGH GRADING.
 - ALL COMMON LOTS AS SHOWN HEREIN TO BE PRIVATELY MAINTAINED BY THE H.O.A.
 - ALL WATER LINE GATE VALVES, SERVICE GATE VALVES, AND FIRE HYDRANT GATE VALVES ARE TO BE CONSTRUCTED UNDER A.C. PAVEMENT. IT IS THE CONTRACTORS RESPONSIBILITY TO VERIFY THAT ALL WATER VALVES CANS DO NOT CREATE CONFLICTS WITH THE PROPOSED CURB LINE PRIOR TO PLACEMENT OF CONCRETE. ALL WATER FACILITIES SHOWN IN THESE DRAWINGS HAVE BEEN "SCALED-UP" FOR CLARITY ONLY.



APPROVAL: *[Signature]* 9-28-97
LAS VEGAS VALLEY WATER DISTRICT DATE

100% SUBMITTAL 03-06-97

RECOMMENDED BY: HUGHES

PE. NO. 10259

DATE: 9-28-97

DESCRIPTION: PAVILION CENTER DRIVE PLAN & PROFILE STA 112+50 TO 117+00

G. C. WALLACE, INC.
Engineering/Architecture
1655 SOUTH RAINBOW BLVD., LAS VEGAS, NEVADA 89102 (702) 363-1200
SUMMERLIN DIVISION (702) 363-0291

SUMMERLIN
VILLAGE 12 UNIT 2C IMPROVEMENTS
PAVILION CENTER DRIVE
PLAN & PROFILE
STA 112+50 TO 117+00

SHEET **11**
SHT 11 OF 41

JOB NO. 62011214

