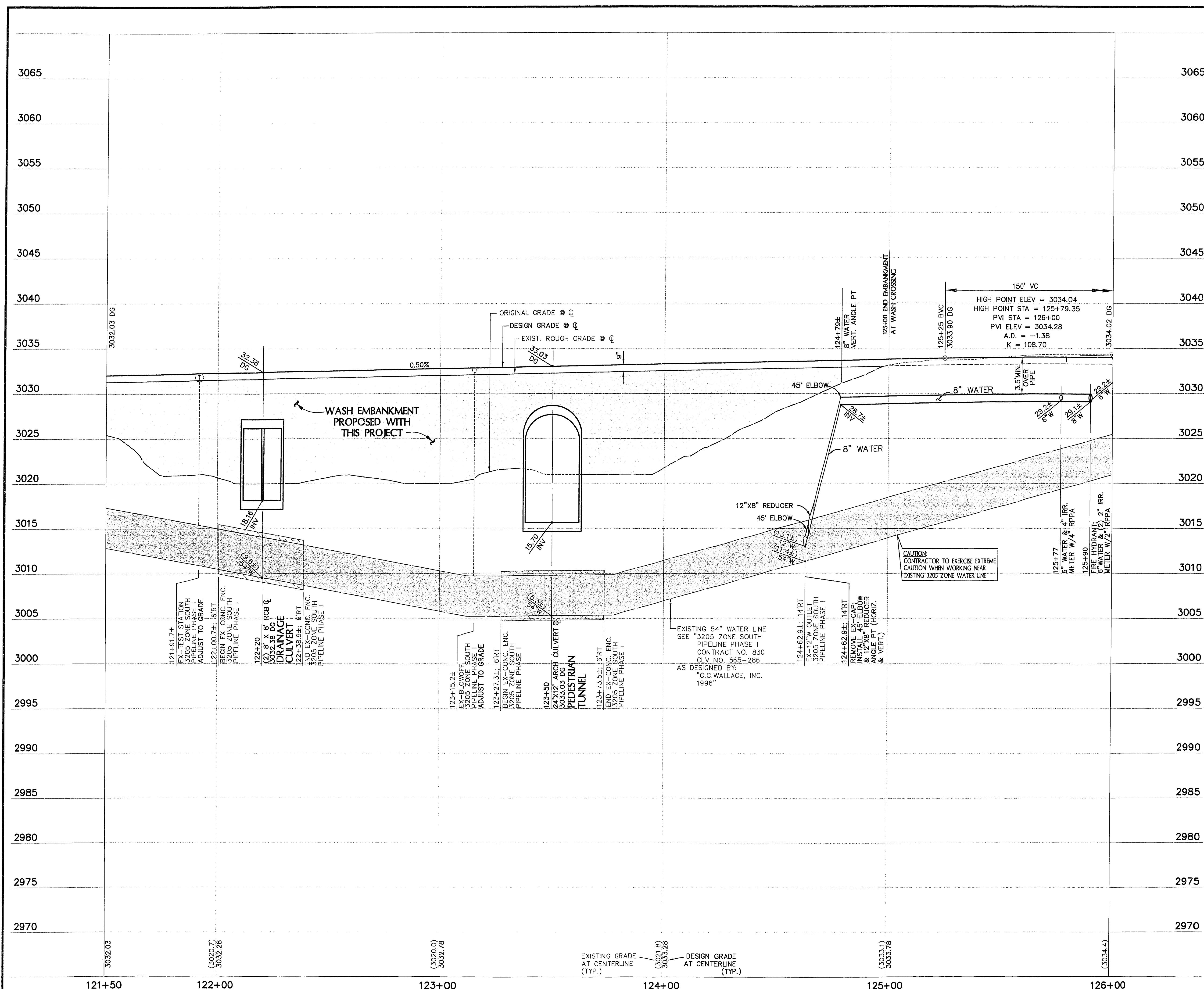
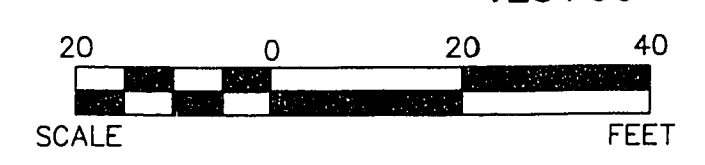


C:\DMS\11\2001\1104\DWG\121104\121104.dwg Plotted: Feb 14 15:11:57 1997 by 01



### PAVILION CENTER DRIVE

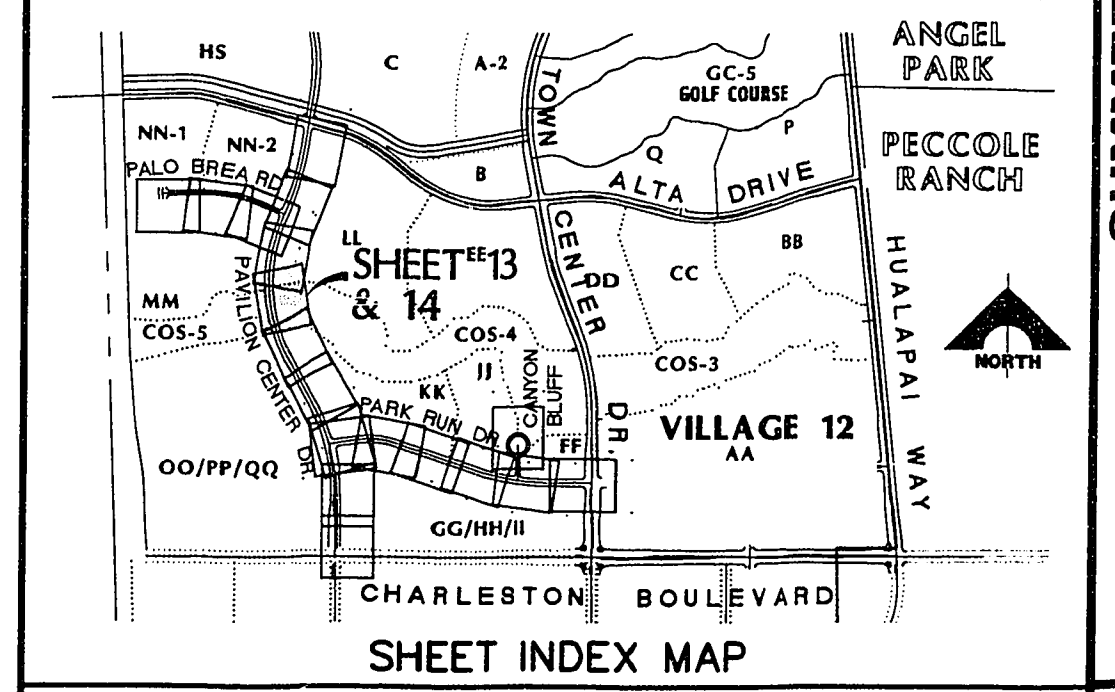
SCALE: HORIZ. 1" = 20'  
VERT. 1" = 5'



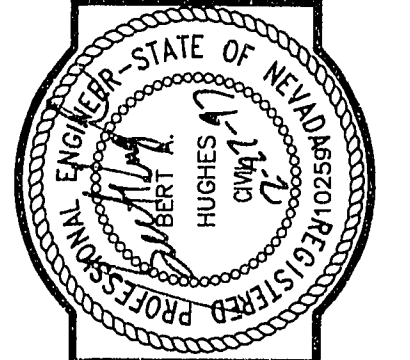
SEE SHEET 13 FOR PLAN

#### NOTE TO CONTRACTOR:

1. ALL EXISTING UTILITY CROSSINGS MUST BE VERIFIED PRIOR TO CONSTRUCTION OF ANY MAIN LINES OR LATERALS THAT MAY BE ADVERSELY EFFECTED. ANY DISCREPANCIES IN LOCATION AND/OR ELEVATION MUST BE PROVIDED TO THE ENGINEER FOR ACCEPTANCE PRIOR TO CONSTRUCTION.
2. TOPOGRAPHY SHOWN HEREIN REFLECTS ORIGINAL EXISTING TOPOGRAPHY. ACTUAL FIELD CONDITIONS INCLUDE SITE ROUGH GRADING.
3. ALL COMMON LOTS AS SHOWN HEREIN TO BE PRIVATELY MAINTAINED BY THE H.O.A.
4. ALL WATER LINE GATE VALVES, SERVICE GATE VALVES, AND FIRE HYDRANT GATE VALVES ARE TO BE CONSTRUCTED UNDER A.C. PAVEMENT. IT IS THE CONTRACTORS RESPONSIBILITY TO VERIFY THAT ALL WATER VALVES CANS DO NOT CREATE CONFLICTS WITH THE PROPOSED CURB LINE PRIOR TO PLACEMENT OF CONCRETE. ALL WATER FACILITIES SHOWN IN THESE DRAWINGS HAVE BEEN "SCALED-UP" FOR CLARITY ONLY.



APPROVAL: *[Signature]* 2-22-97  
LAS VEGAS VALLEY WATER DISTRICT DATE



**G. C. WALLACE, INC.**  
Engineering/Architecture  
3585 SOUTH RAINBOW BLVD., LAS VEGAS, NEVADA 89102 (702) 363-1200  
SUMMERLIN DIVISION (702) 363-6899

**SUMMERLIN**  
VILLAGE 12 UNIT 2C IMPROVEMENTS  
PAVILION CENTER DRIVE  
PROFILE  
STA 121+50 TO 126+00

SHEET  
**14**  
SHT 14 OF 41

100% SUBMITTAL 02-05-97

DATE	AGENCY	APP.	DATE	REV.	DESCRIPTION