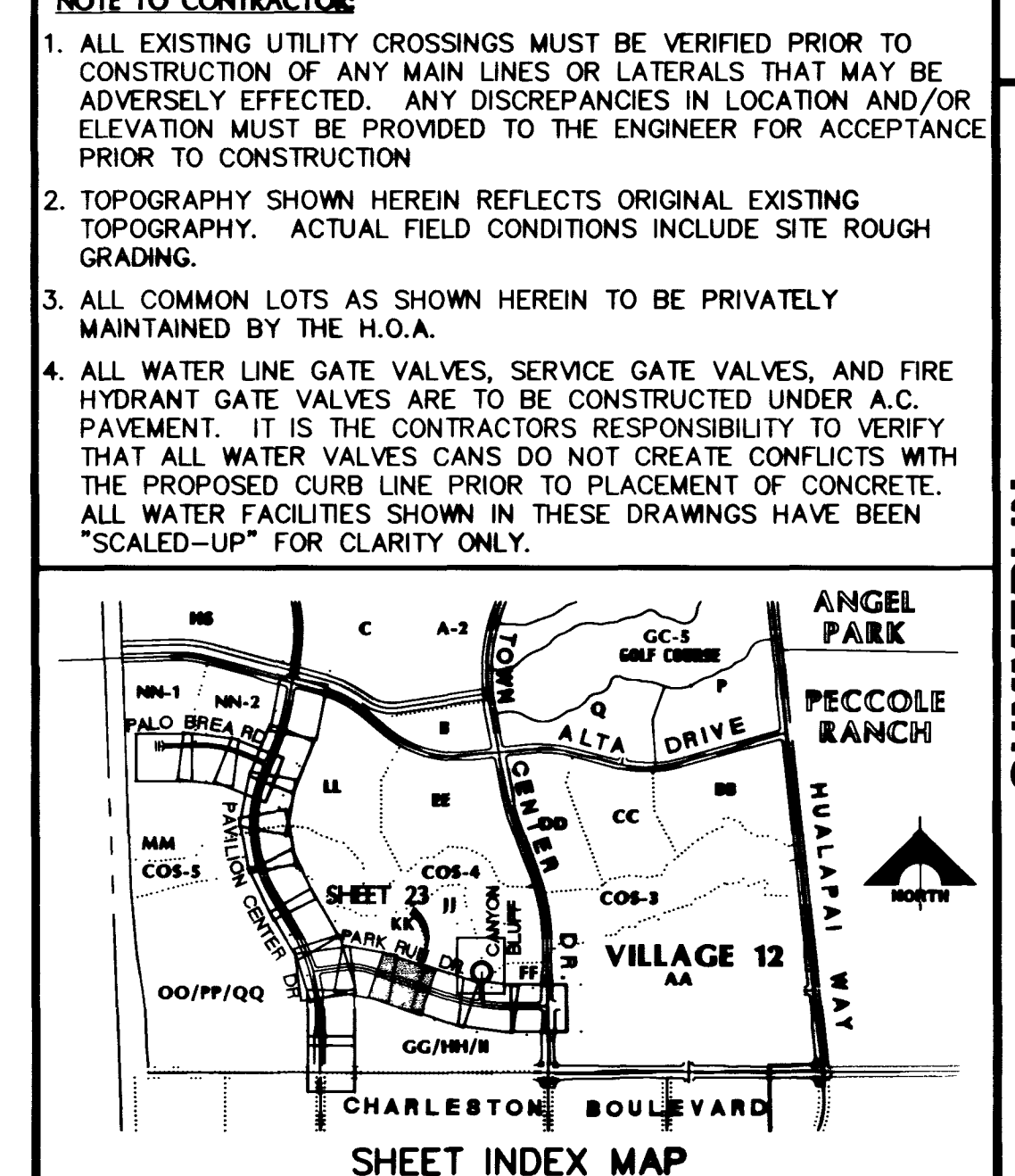


CONSTRUCTION NOTES	
IMPROVEMENTS	<ul style="list-style-type: none"> INSTALL A.C. PAVEMENT PER STREET SECTIONS, SEE SHEET 32 INSTALL "L" TYPE CURB & GUTTER (S-47) INSTALL "A" TYPE ISLAND CURB (S-30) INSTALL HANDICAP RAMP CURB DEPRESSION (S-78)
WATER	<ul style="list-style-type: none"> INSTALL CAP W/ 2" BLOW-OFF ASSEMBLY INSTALL 10" GATE VALVE & BOX (U-34) INSTALL 8" GATE VALVE & BOX (U-34) INSTALL 12" X 12" X 10" TEE
SEWER	<ul style="list-style-type: none"> INSTALL 48" DIA. SEWER MANHOLE (D1-D4) INSTALL TEMPORARY PLUG
STORM DRAIN	<ul style="list-style-type: none"> INSTALL TYPE II STORM DRAIN MANHOLE (D1-D4) INSTALL TEMPORARY PLUG INSTALL TYPE "A" DROP INLET (D-12)
STREET LIGHTING	<ul style="list-style-type: none"> STREET LIGHT OR COMMON TRENCH, SEE ELECTRICAL PLAN SINGLE STREET LIGHT, SEE ELECTRICAL PLAN (E-2)
IRRIGATION	<ul style="list-style-type: none"> BANK "A"; 1-6" & 2-4" SDR35 PVC

NOTE TO CONTRACTOR:

- ALL EXISTING UTILITY CROSSINGS MUST BE VERIFIED PRIOR TO CONSTRUCTION OF ANY MAIN LINES OR LATERALS THAT MAY BE ADVERSELY EFFECTED. ANY DISCREPANCIES IN LOCATION AND/OR ELEVATION MUST BE PROVIDED TO THE ENGINEER FOR ACCEPTANCE PRIOR TO CONSTRUCTION.
- TOPOGRAPHY SHOWN HEREIN REFLECTS ORIGINAL EXISTING TOPOGRAPHY. ACTUAL FIELD CONDITIONS INCLUDE SITE ROUGH GRADING.
- ALL COMMON LOTS AS SHOWN HEREIN TO BE PRIVATELY MAINTAINED BY THE H.O.A.
- ALL WATER LINE GATE VALVES, SERVICE GATE VALVES, AND FIRE HYDRANT GATE VALVES ARE TO BE CONSTRUCTED UNDER A.C. PAVEMENT. IT IS THE CONTRACTOR'S RESPONSIBILITY TO VERIFY THAT ALL WATER VALVES CANS DO NOT CREATE CONFLICTS WITH THE PROPOSED CURB LINE PRIOR TO PLACEMENT OF CONCRETE. ALL WATER FACILITIES SHOWN IN THESE DRAWINGS HAVE BEEN "SCALED-UP" FOR CLARITY ONLY.



APPROVAL:
[Signature]
LAS VEGAS VALLEY WATER DISTRICT

DATE: 2-28-77

SHEET 23
SHT 23 OF 41

100% SUBMITTAL 02-06-97

RECOMMENDED
RE: A. HUGHES
10269
P.E. NO. DATE DESCRIPTION

STATE OF NEVADA
ENGINEERING ARCHITECTURE
G. C. WALLACE, INC.
1545 SOUTH RAINBOW BLVD. LAS VEGAS, NEVADA 89102 (702) 363-1200
SUMMERLIN DIVISION (702) 363-0991

JOB NO. 6301134

C:\URBANKING\11-12\UNIT-2C\IMPROV\107Y-4463-2C\12DPR23 Sak Feb 15 17:26:38 1997 BY STS/OT

8551 11-31-63 107Y-4463-2C

