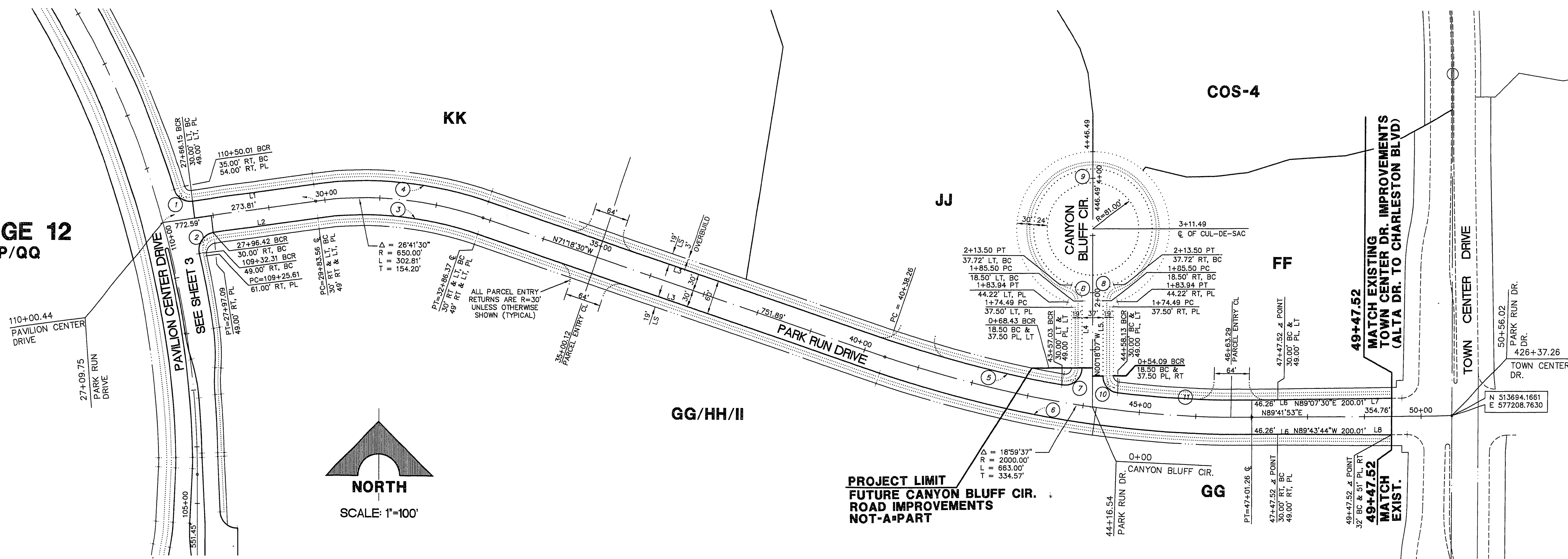


VILLAGE 12
00/PP/QQ

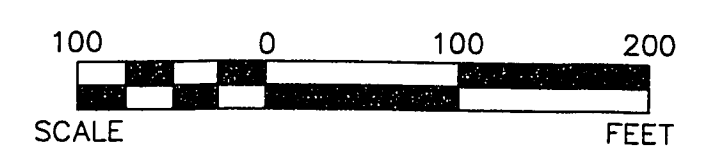
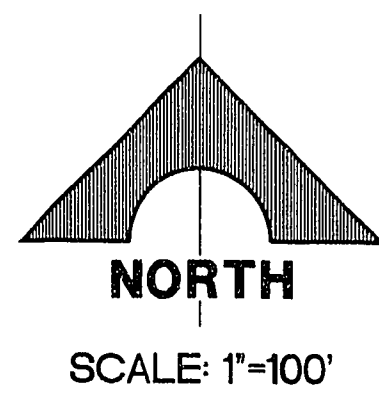


BC CURVE TABLE

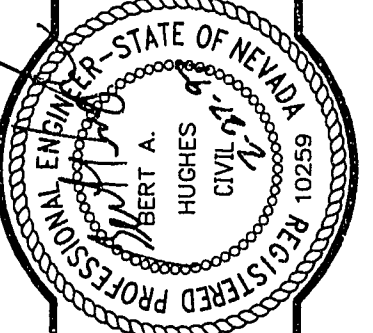
CURVE	DELTA	RADIUS	LENGTH	TANGENT
1	80°3'31"	30.00	42.01	25.27
2	95°33'36"	30.00	50.04	33.06
3	28°41'30"	620.00	268.53	147.59
4	28°41'30"	680.00	316.78	161.32
5	09°07'56"	1970.00	313.99	157.33
6	18°59'37"	2030.00	672.95	339.59
7	89°51'41"	30.00	32.29	35.68
8	68°56'43"	30.00	36.10	20.60
9	317°53'28"	105.00	582.58	---
10	83°02'06"	30.00	43.49	26.56
11	08°57'54"	1970.00	239.48	119.89

LINE TABLE

LINE	BEARING	DISTANCE
L1	N82°00'00"E	217.41'
L2	N82°00'00"E	187.14'
L3	N71°18'30"W	751.89'
L4	N00°18'07"W	117.07'
L5	N00°18'07"W	131.42'
L6	N89°41'53"E	46.28'
L7	N89°07'30"E	200.01'
L8	N89°43'44"W	200.01'



PARK RUN DRIVE
SCALE: HORIZ. 1" = 100'



RECOMMENDED
BERT A. HUGHES
10259
R.F.E. NO.
DATE
DESCRIPTION
APPROVAL

G.C. WALLACE, INC.
Engineering/Architecture
1855 SOUTH RAINBOW BLVD./LAS VEGAS, NEVADA 89102

SHEET
4
SHT 4 OF 41

100% SUBMITTAL - 02-05-97