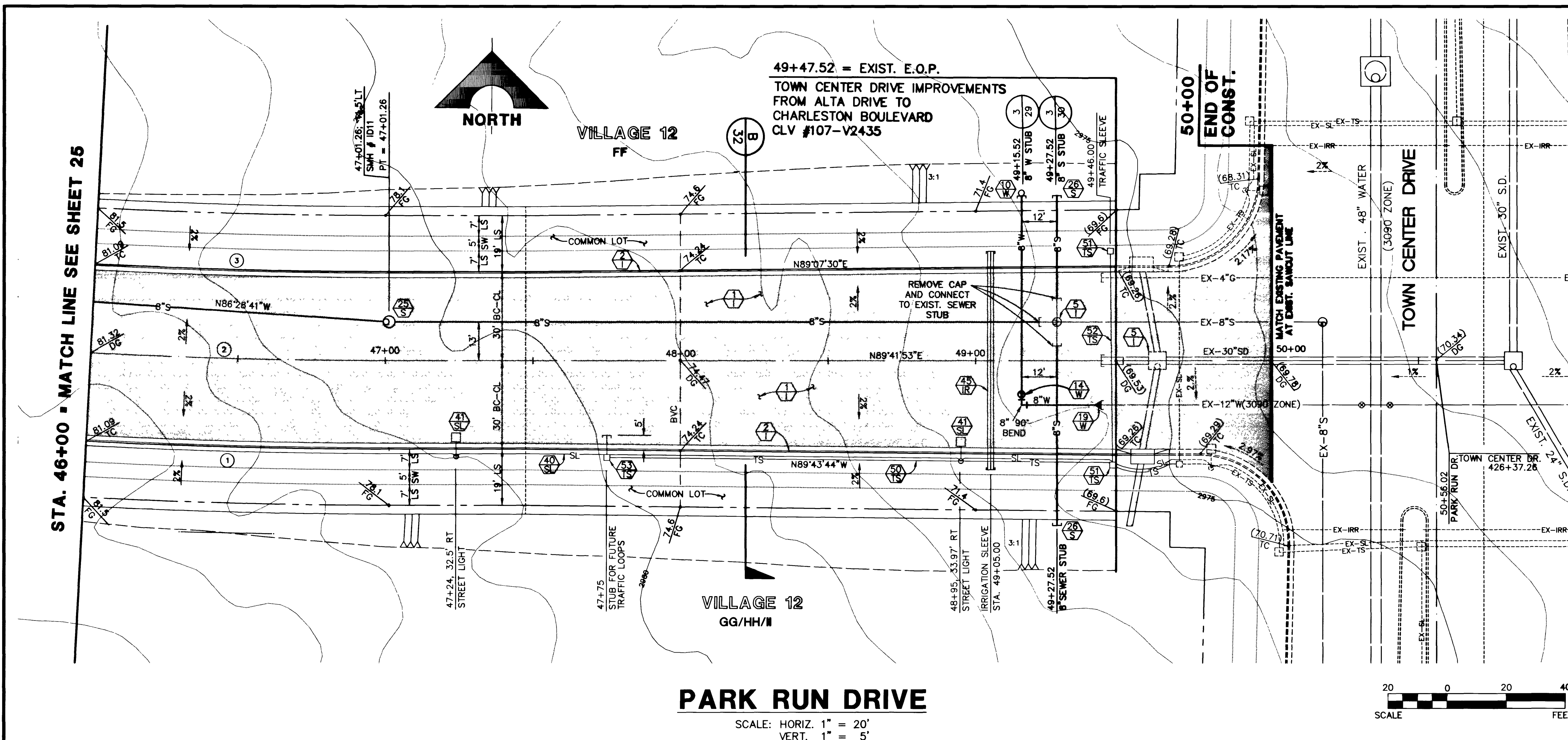
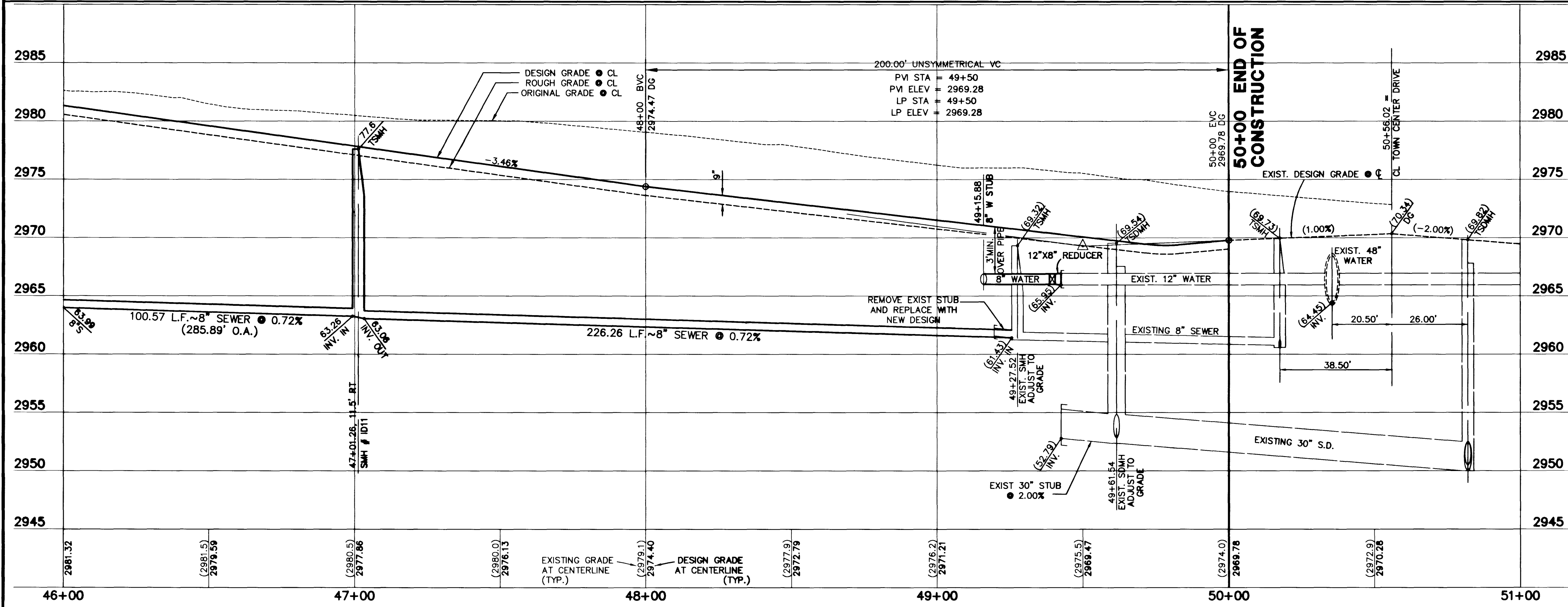
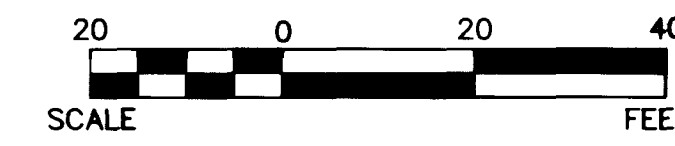


C:\URDM\NSV\11-12\UNIT-20\IMPROV\1010\12\DRPP26 S&T.FRD 15 17:32:06 1997 by STS/DT



**PARK RUN DRIVE**

SCALE: HORIZ. 1" = 20'  
VERT. 1" = 5'



**CURVE DATA** (1) INDICATES CURVE NUMBER

| CURVE | DELTA     | RADIUS   | LENGTH  | TANGENT |
|-------|-----------|----------|---------|---------|
| 1     | 02°54'03" | 2030.00' | 102.78' | 51.40'  |
| 2     | 02°54'03" | 2030.00' | 101.28' | 50.84'  |
| 3     | 02°54'03" | 1970.00' | 99.74'  | 49.88'  |

**CONSTRUCTION NOTES**

- IMPROVEMENTS**
- (1) INSTALL A.C. PAVEMENT PER STREET SECTIONS, SEE SHEET 32
  - (2) INSTALL "L" TYPE CURB & GUTTER (S-47)
  - (3) INSTALL "A" TYPE ISLAND CURB (S-30)
  - (4) INSTALL HANDICAP RAMP CURB DEPRESSION (S-29)
  - (5) ADJUST EXISTING WATER FACILITY TO GRADE

**WATER**

- (10) INSTALL CAP W/ 2" BLOW-OFF ASSEMBLY
- (11) INSTALL 8" GATE VALVE & BOX (U-34)
- (12) INSTALL 12" X 8" REDUCER

**SEWER**

- (23) INSTALL 48" DIA. SEWER MANHOLE (S1-1)
- (24) INSTALL TEMPORARY PLUG

**STREET LIGHTING**

- (40) STREET LIGHT OR COMMON TRENCH, SEE ELECTRICAL PLAN
- (41) SINGLE STREET LIGHT, SEE ELECTRICAL PLAN (E-2)

**IRRIGATION**

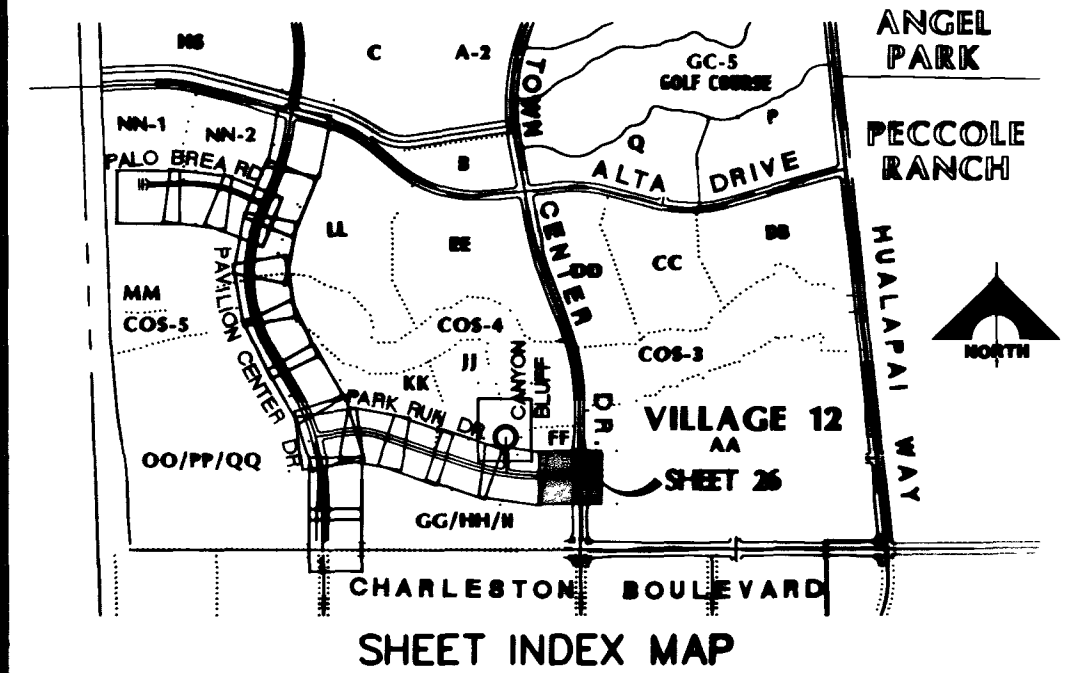
- (13) BANK "A"; 1-6" & 2-4" SDR35 PVC

**TRAFFIC**

- (50) INSTALL (1) 2" CONDUIT FOR TRAFFIC SIGNAL
- (51) INSTALL NO. 5 PULLBOX (E-32)
- (52) INSTALL (2) 3" CONDUIT FOR TRAFFIC SIGNAL
- (53) INSTALL NO. 3 1/2 PULLBOX (E-31)

**NOTE TO CONTRACTOR:**

1. ALL EXISTING UTILITY CROSSINGS MUST BE VERIFIED PRIOR TO CONSTRUCTION OF ANY MAIN LINES OR LATERALS THAT MAY BE ADVERSELY EFFECTED. ANY DISCREPANCIES IN LOCATION AND/OR ELEVATION MUST BE PROVIDED TO THE ENGINEER FOR ACCEPTANCE PRIOR TO CONSTRUCTION.
2. TOPOGRAPHY SHOWN HEREIN REFLECTS ORIGINAL EXISTING TOPOGRAPHY. ACTUAL FIELD CONDITIONS INCLUDE SITE ROUGH GRADING.
3. ALL COMMON LOTS AS SHOWN HEREIN TO BE PRIVATELY MAINTAINED BY THE H.O.A.
4. ALL WATER LINE GATE VALVES, SERVICE GATE VALVES, AND FIRE HYDRANT GATE VALVES ARE TO BE CONSTRUCTED UNDER A.C. PAVEMENT. IT IS THE CONTRACTORS RESPONSIBILITY TO VERIFY THAT ALL WATER VALVES CANS DO NOT CREATE CONFLICTS WITH THE PROPOSED CURB LINE PRIOR TO PLACEMENT OF CONCRETE. ALL WATER FACILITIES SHOWN IN THESE DRAWINGS HAVE BEEN "SCALED-UP" FOR CLARITY ONLY.



APPROVAL: *[Signature]* 2-28-77  
LAS VEGAS VALLEY WATER DISTRICT DATE

100% SUBMITTAL 02-08-97

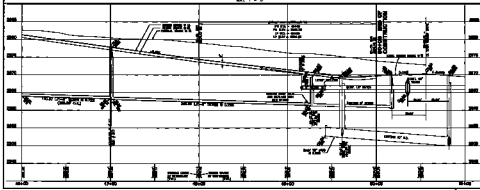
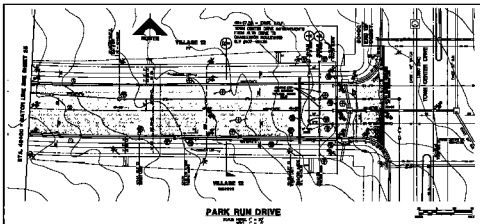
RECOMMENDED:  
REST. A. HUGHES  
10099  
P.E. NO. DATE

REGISTERED PROFESSIONAL ENGINEER - STATE OF NEVADA  
G. C. WALLACE, INC.  
Engineering/Architecture  
1555 SOUTH RAINBOW BLVD., LAS VEGAS, NEVADA 89102 (702) 363-1200  
SUMMERLIN DIVISION: (702) 365-0991

**SUMMERLIN**  
**VILLAGE 12 UNIT 2C IMPROVEMENTS**  
**PARK RUN DRIVE**  
**PLAN & PROFILE**  
**STA 46+00 TO 49+47.52**

SHEET  
**26**  
SHT 28 OF 41

11-31-66 107Y-4463-2C



**CHANGE DATA**

| NO. | DATE | REVISION | BY | CHKD. |
|-----|------|----------|----|-------|
| 1   |      |          |    |       |
| 2   |      |          |    |       |
| 3   |      |          |    |       |
| 4   |      |          |    |       |
| 5   |      |          |    |       |
| 6   |      |          |    |       |
| 7   |      |          |    |       |
| 8   |      |          |    |       |
| 9   |      |          |    |       |
| 10  |      |          |    |       |
| 11  |      |          |    |       |
| 12  |      |          |    |       |
| 13  |      |          |    |       |
| 14  |      |          |    |       |
| 15  |      |          |    |       |
| 16  |      |          |    |       |
| 17  |      |          |    |       |
| 18  |      |          |    |       |
| 19  |      |          |    |       |
| 20  |      |          |    |       |
| 21  |      |          |    |       |
| 22  |      |          |    |       |
| 23  |      |          |    |       |
| 24  |      |          |    |       |
| 25  |      |          |    |       |
| 26  |      |          |    |       |
| 27  |      |          |    |       |
| 28  |      |          |    |       |
| 29  |      |          |    |       |
| 30  |      |          |    |       |
| 31  |      |          |    |       |
| 32  |      |          |    |       |
| 33  |      |          |    |       |
| 34  |      |          |    |       |
| 35  |      |          |    |       |
| 36  |      |          |    |       |
| 37  |      |          |    |       |
| 38  |      |          |    |       |
| 39  |      |          |    |       |
| 40  |      |          |    |       |
| 41  |      |          |    |       |
| 42  |      |          |    |       |
| 43  |      |          |    |       |
| 44  |      |          |    |       |
| 45  |      |          |    |       |
| 46  |      |          |    |       |
| 47  |      |          |    |       |
| 48  |      |          |    |       |
| 49  |      |          |    |       |
| 50  |      |          |    |       |

**VERTICAL CURVE DATA**

**GRADES**

**ELEVATIONS**

**STATIONING**

**APPROVALS**

1/21/94 2-2-94

11-31-26 107Y-4483-2C