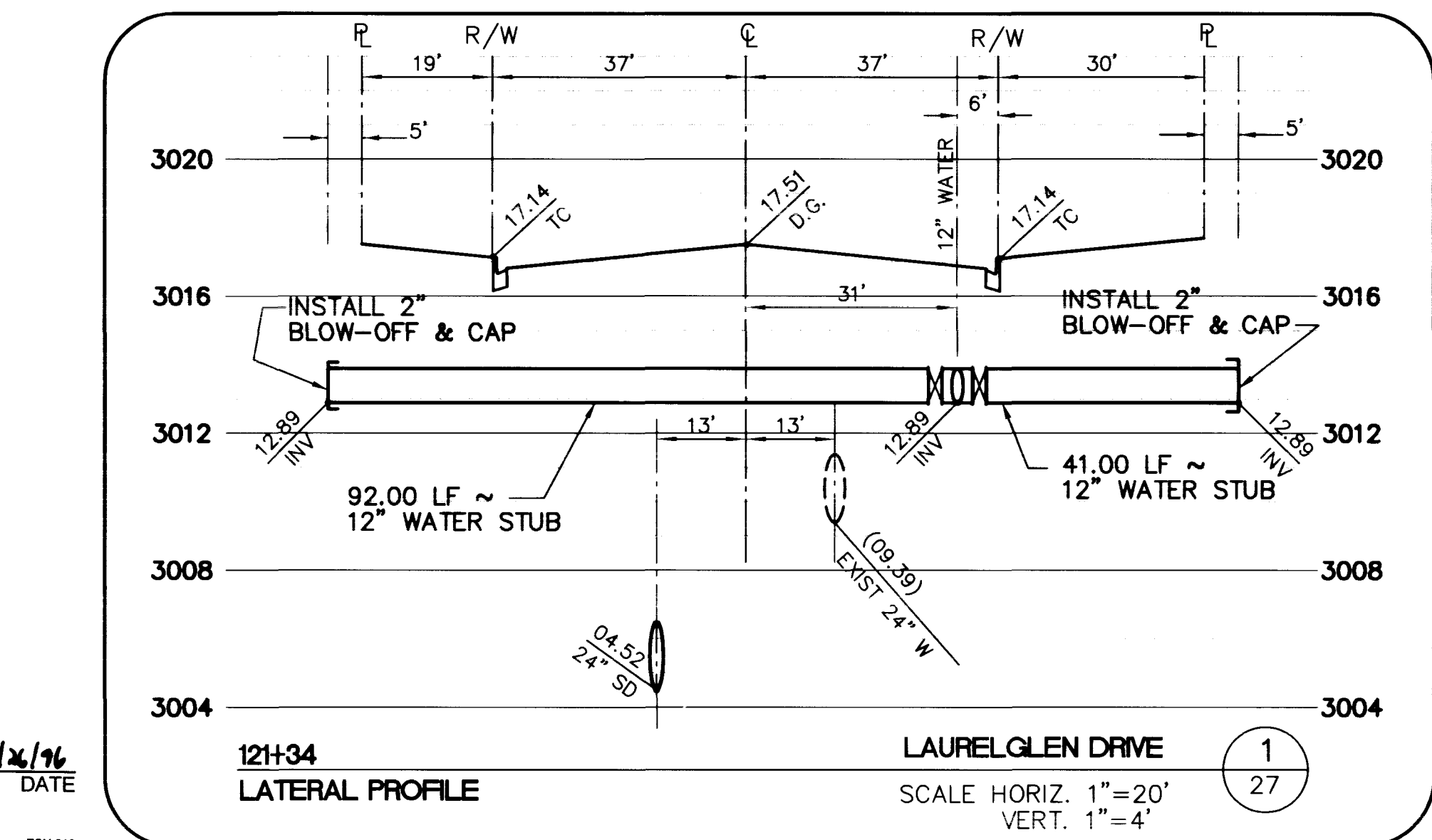
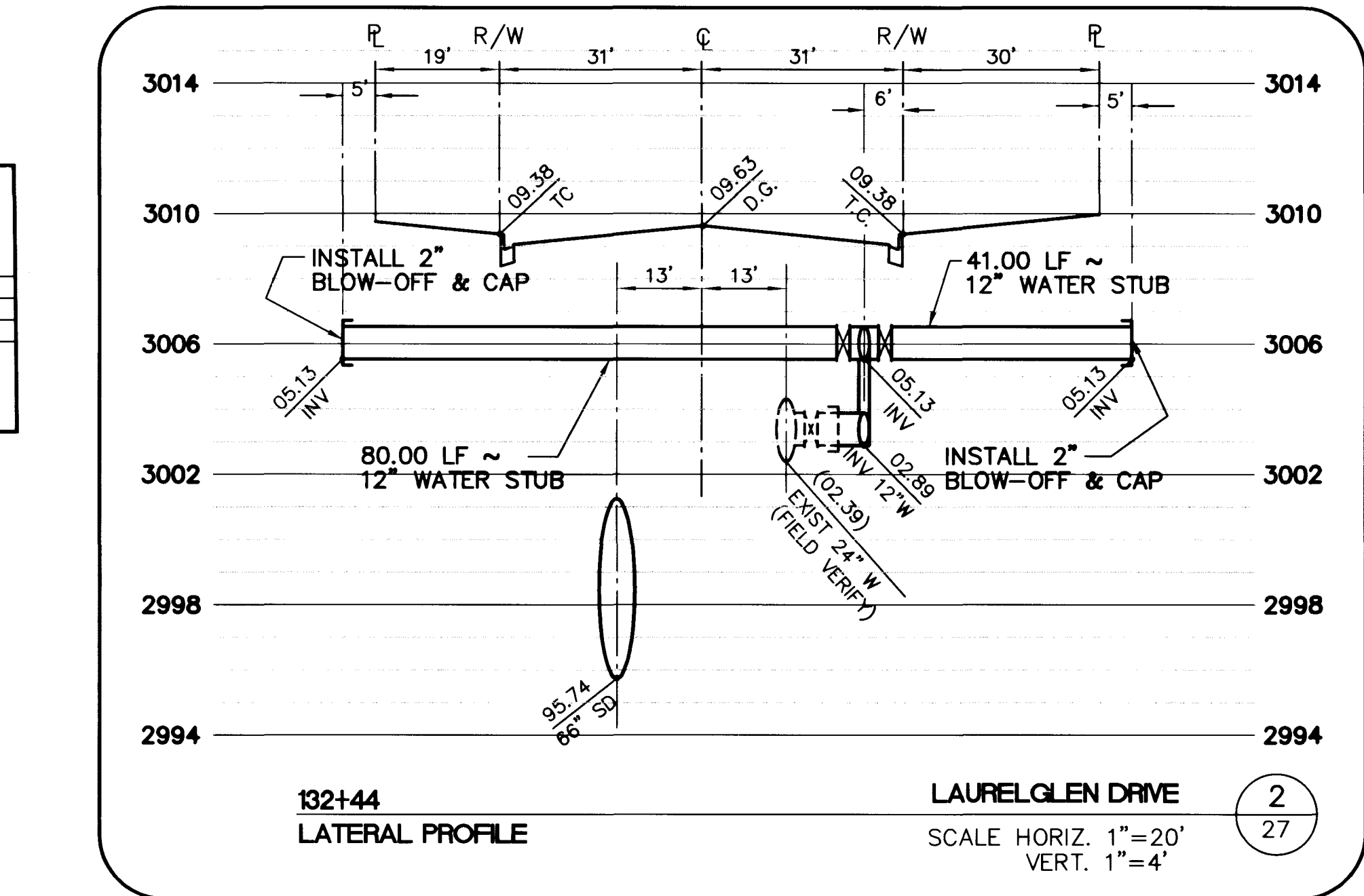
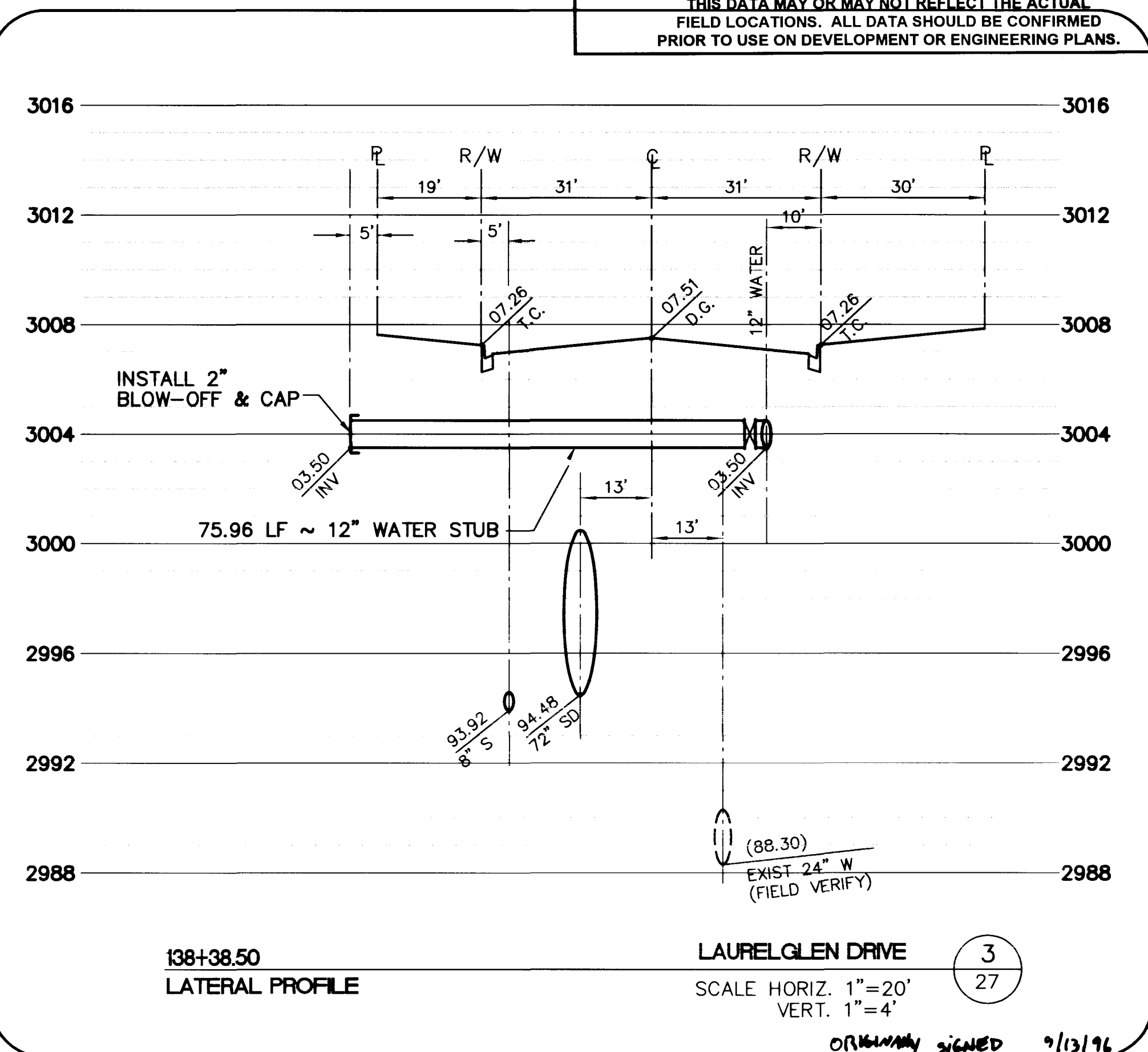
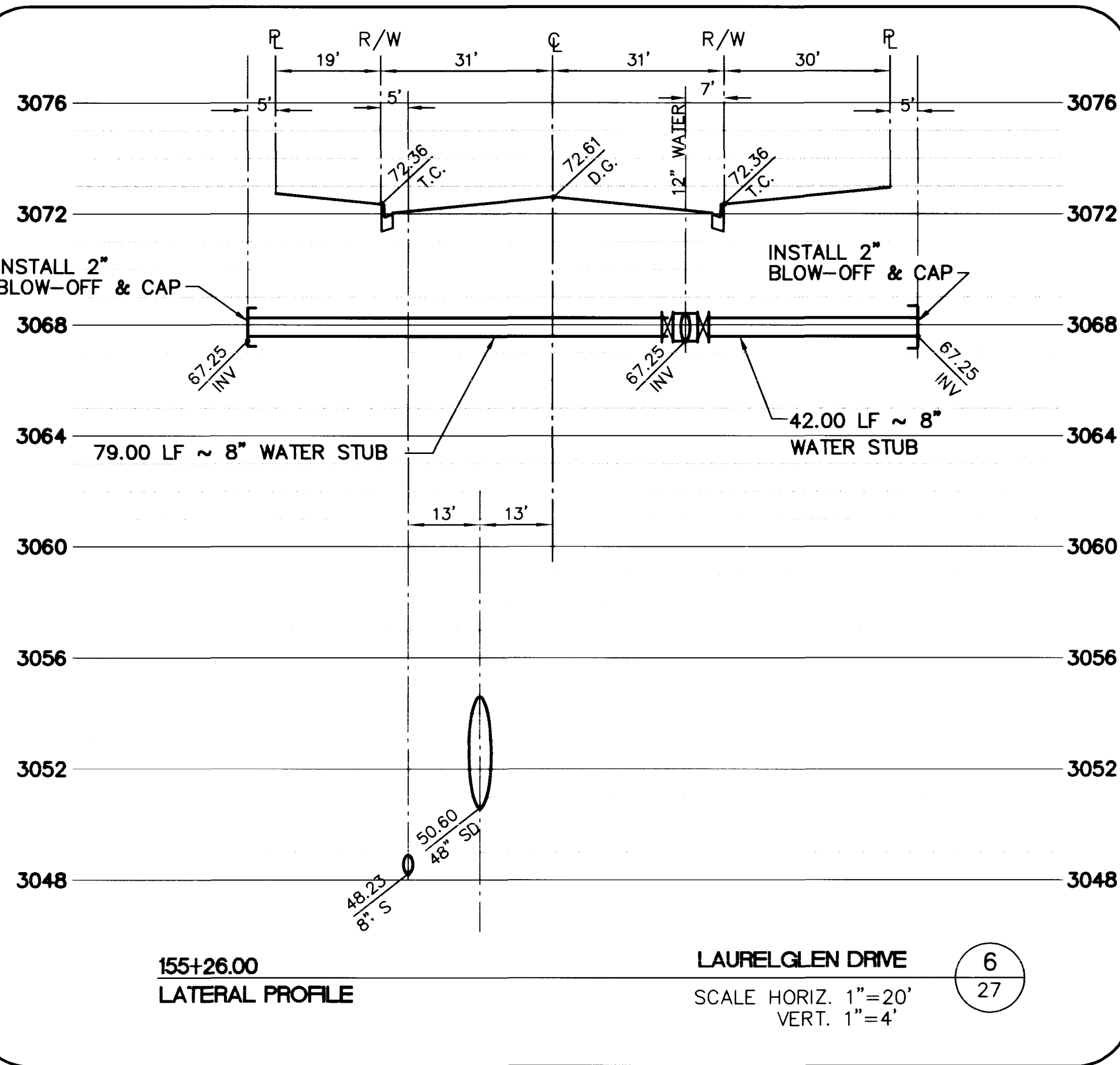
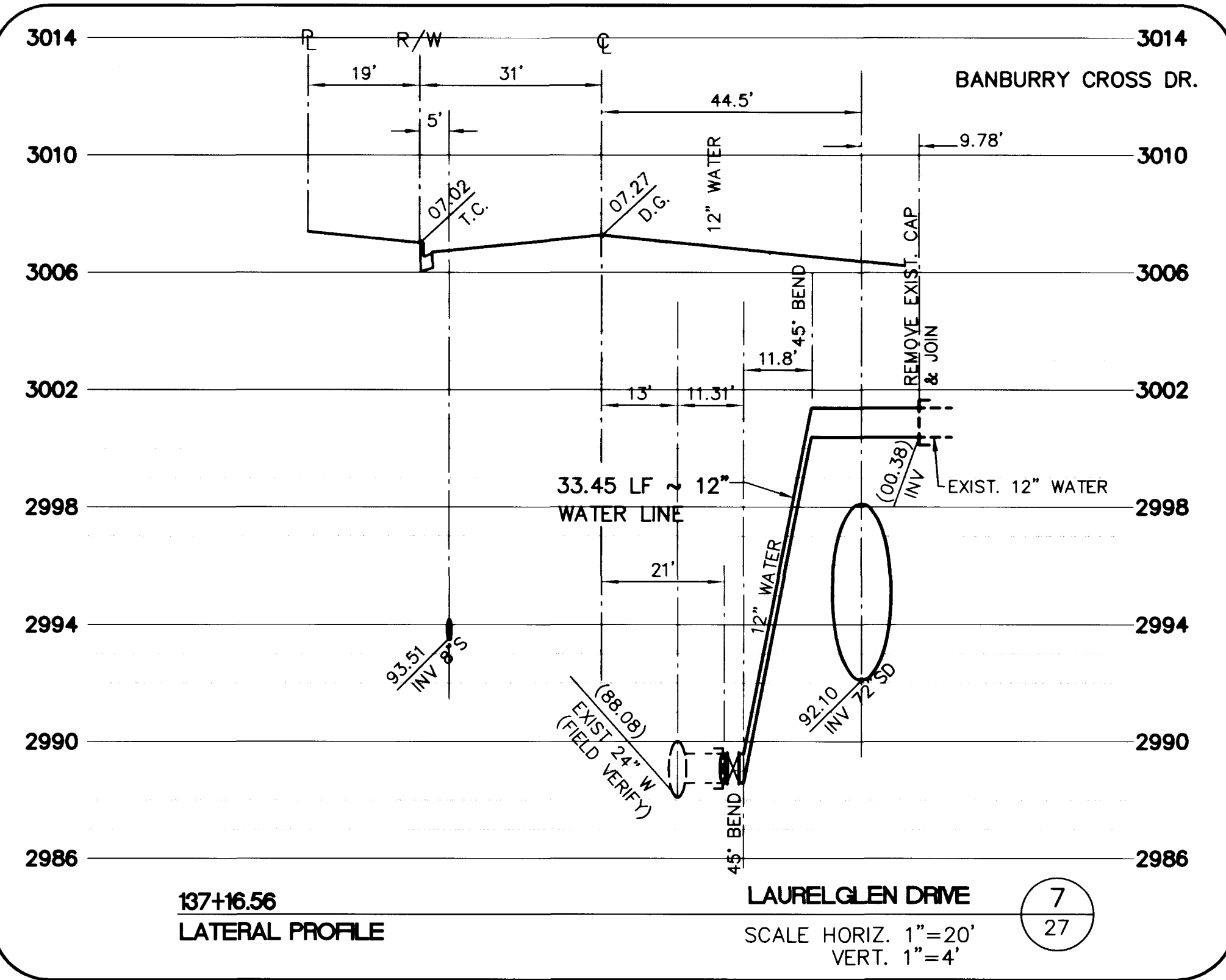
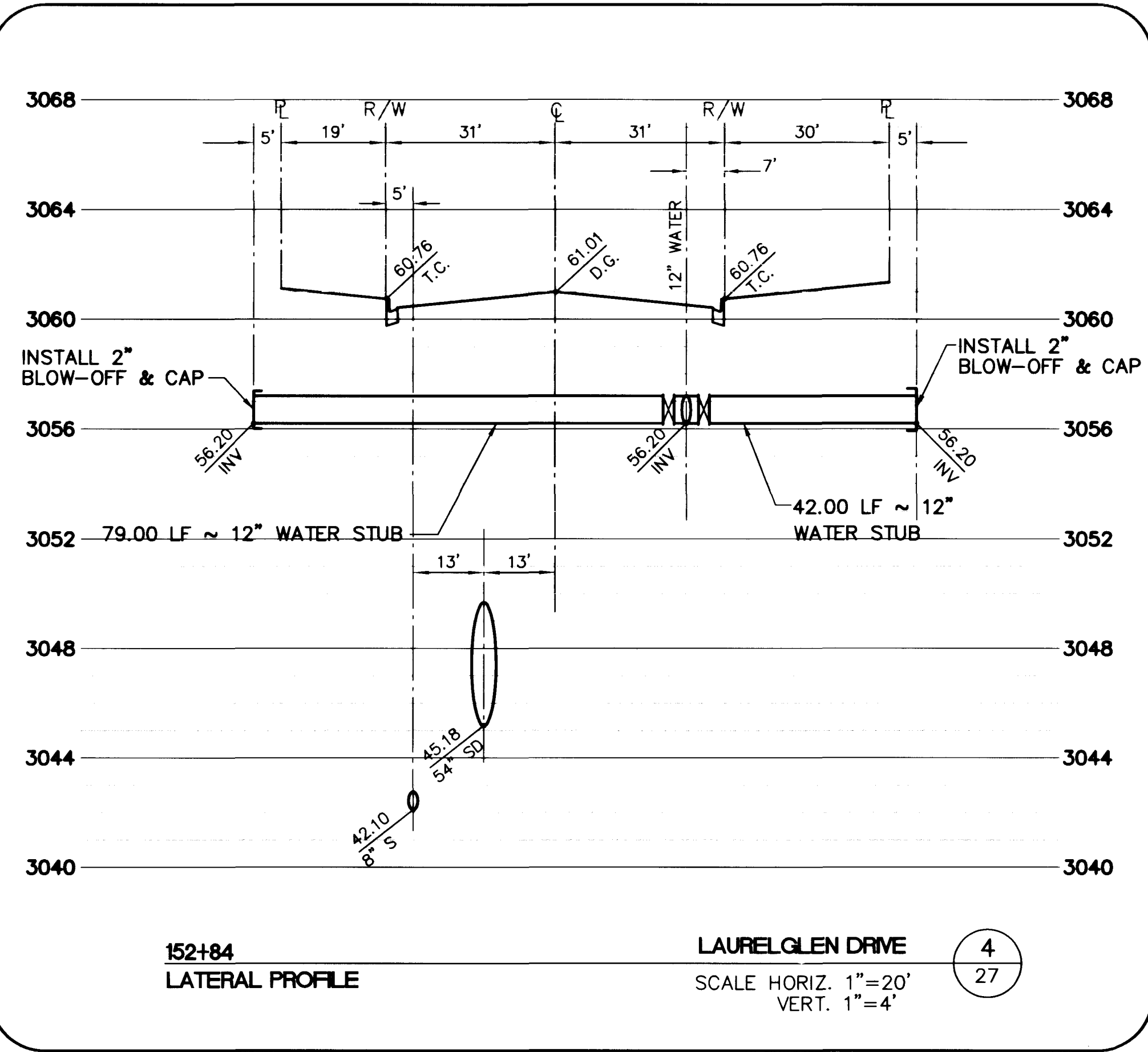
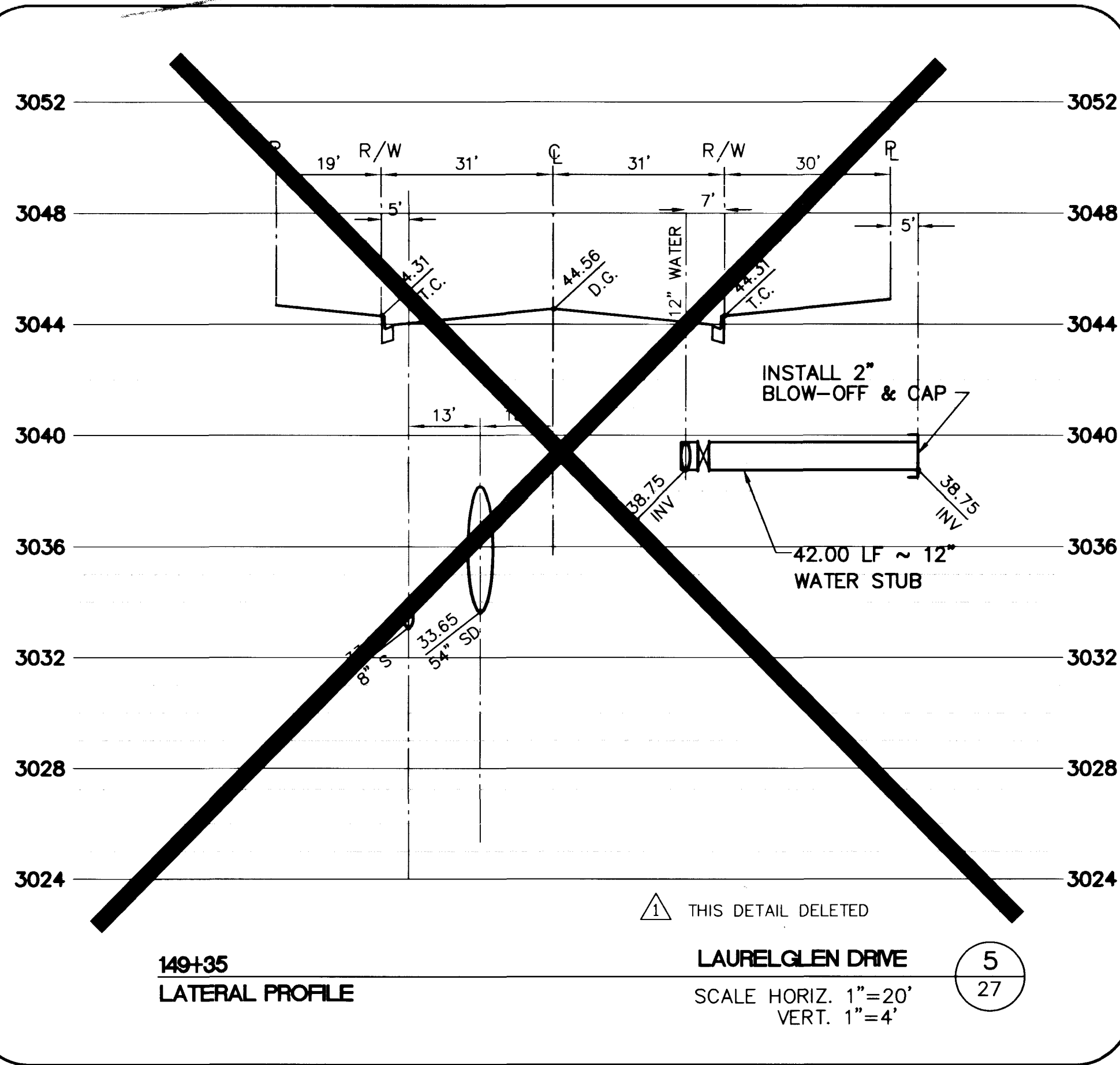


October 24, 1996 8:14:37 a.m. Drawing: C:\DWG\11-12\2B\IMPROV\1-G-WLA.TT.DWG

JOB NO. JOB NO. 62011.213



**RECORD DRAWINGS**  
THESE PLANS SHOW RECORD INFORMATION FROM:

CONTRACTOR: WELLS CARGO, INC. (UNDERGROUND UTILITIES) DATE: 04/18/96  
 CONTRACTOR: SOUTHERN NEVADA PAVING (ROADWAY IMPROVEMENTS) DATE: 04/07/96  
 CONTRACTOR: DATE: DATE:  
 CONTRACTOR: DATE: DATE:

THIS DATA MAY OR MAY NOT REFLECT THE ACTUAL FIELD LOCATIONS. ALL DATA SHOULD BE CONFIRMED PRIOR TO USE ON DEVELOPMENT OR ENGINEERING PLANS.

ORIGINALLY SIGNED 9/13/96  
*Anthony R. Wallace*  
 LAS VEGAS VALLEY WATER DISTRICT DATE 11/24/96  
 APPROVED FOR CONSTRUCTION ESN018

**RECORDED DRAWING INFORMATION**  
 02298 10/18/96 DELETED WATER STUB STA 149+35 TO PARCEL L  
 5071 DATE 11/24/96 DESCRIPTION

RECOMMENDED: CHRISTOPHER W. ANDERSON 5071 DATE 11/24/96 DESCRIPTION

REGISTERED PROFESSIONAL ENGINEER - STATE OF NEVADA  
 CHRISTOPHER W. ANDERSON CIVIL ENGINEER 5071  
 1505 SOUTH HANBURY BLVD./LAS VEGAS, NEVADA 89102

**G.C. WALLACE, INC.**  
 Engineering/Architecture

**SUMMERLIN**  
 THE ARBORS AT SUMMERLIN  
 VILLAGE 11/12 UNIT 2B IMPROVEMENTS  
 LAUREL GLEN DRIVE  
 WATER LATERAL DETAILS

**ISSUE TO CONSTRUCT 10/07/96**

SHEET **27**  
 SHT 27 OF 46

**THE LORDS OF THE NIGHT**  
 LABELS: PEOPLE  
 SCALE: G#m F#m

**THE LORDS OF THE NIGHT**  
 LABELS: PEOPLE  
 SCALE: G#m F#m

**THE LORDS OF THE NIGHT**  
 LABELS: PEOPLE  
 SCALE: G#m F#m

**THE LORDS OF THE NIGHT**  
 LABELS: PEOPLE  
 SCALE: G#m F#m

**THE LORDS OF THE NIGHT**  
 LABELS: PEOPLE  
 SCALE: G#m F#m

**THE LORDS OF THE NIGHT**  
 LABELS: PEOPLE  
 SCALE: G#m F#m

**THE LORDS OF THE NIGHT**  
 LABELS: PEOPLE  
 SCALE: G#m F#m

**INSTRUCTIONS**  
 1. READ THE MUSIC CAREFULLY.  
 2. FOLLOW THE INSTRUCTIONS.  
 3. WRITE THE ANSWERS.

