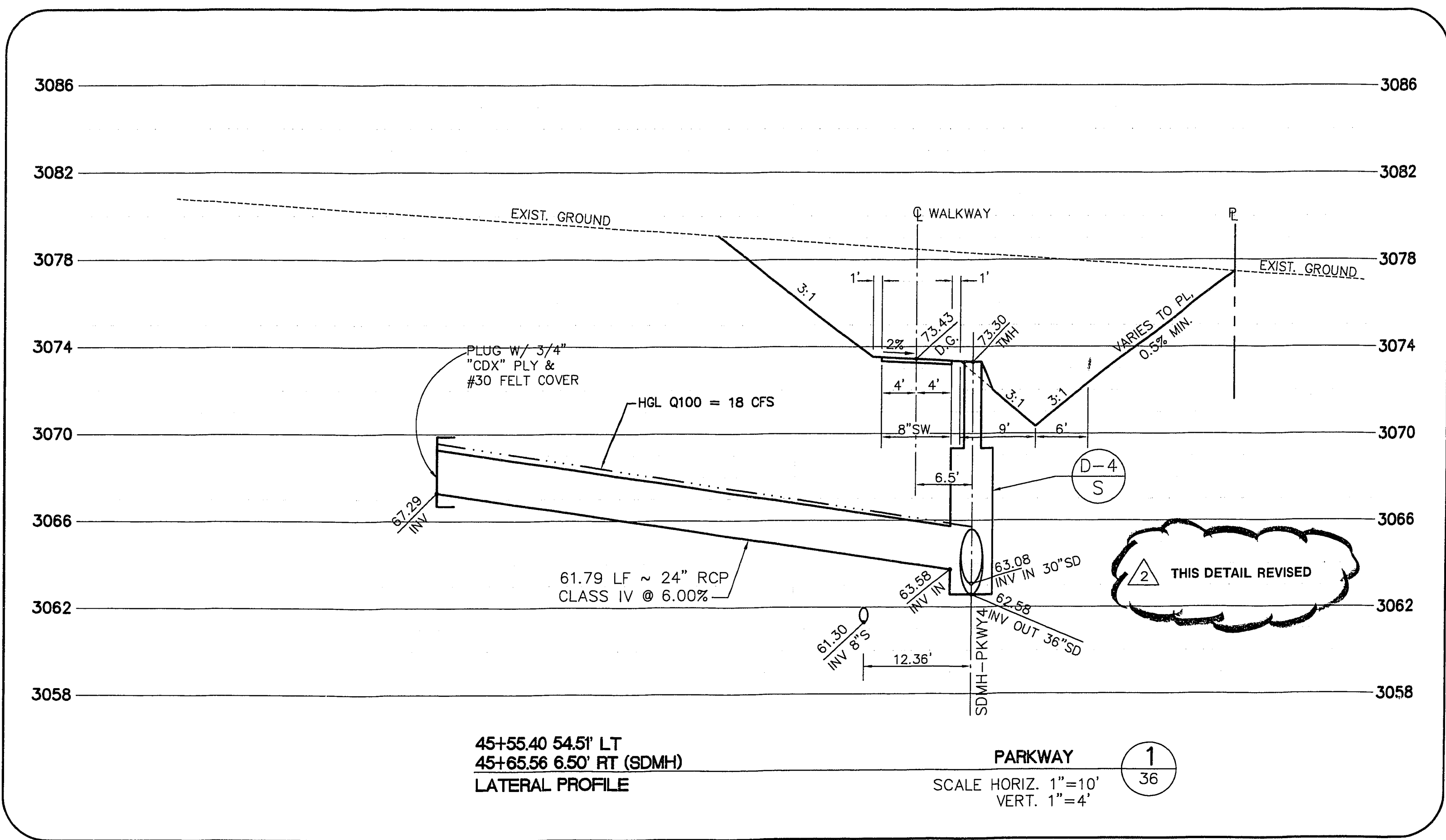
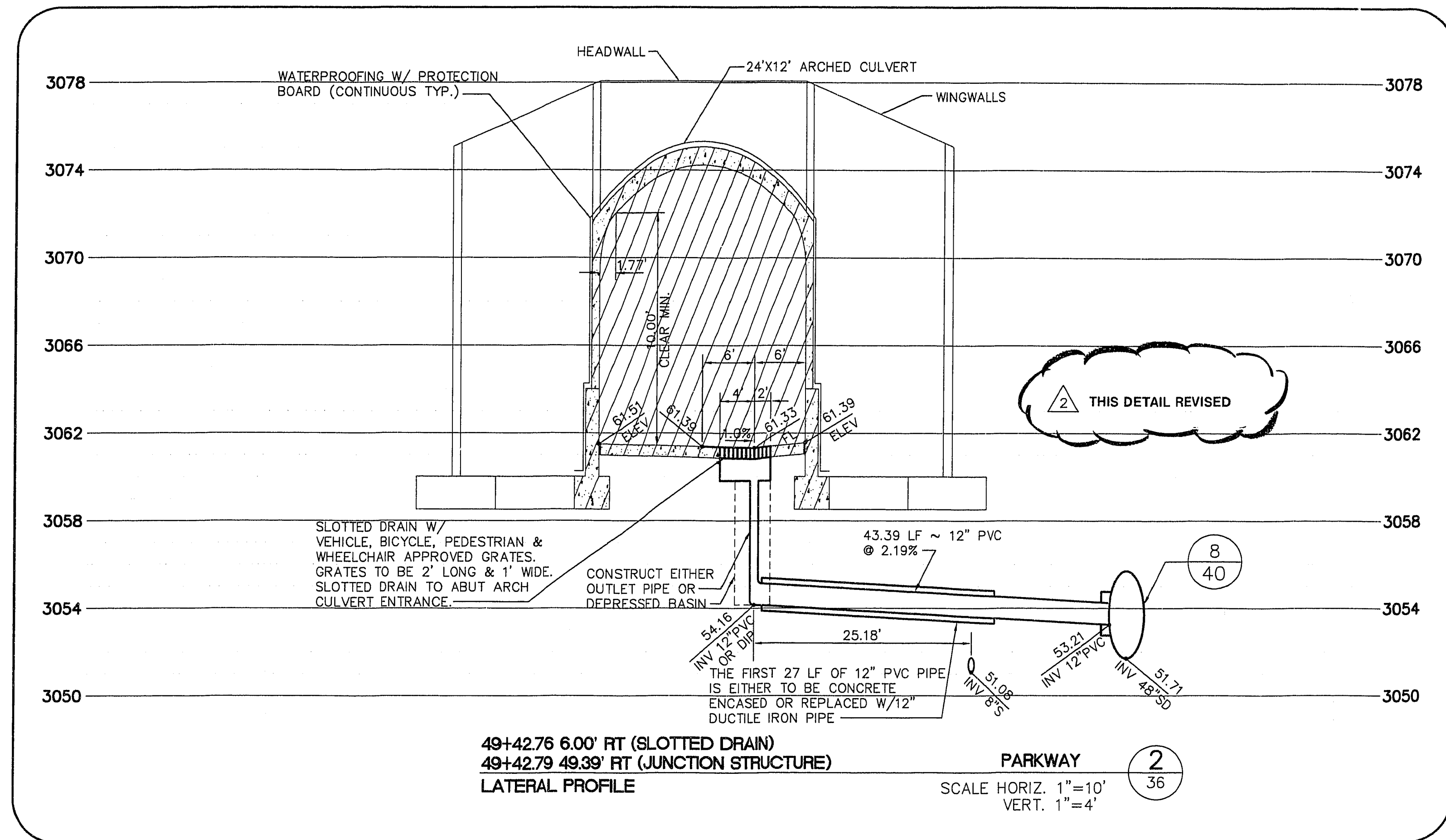


JOB NO. 62011.213 November 21, 1996 2:15:05 p.m. Drawing: D:\11-12\28-1-02\1128D06.DWG



RECOMMENDED BY: CHRISTOPHER W. ANDERSON 5071 R.P.E. NO. DATE DESCRIPTION DATE APPROVAL

11/7/96 REV. UTIL. PER PASO ROUGH GRADE 12/1/96

STATE OF NEVADA PROFESSIONAL ENGINEER

G. C. WALLACE, INC. Engineering/Architecture 1555 SOUTH RAINBOW BLVD., LAS VEGAS, NEVADA 89102

SUMMERLIN THE ARBORS AT SUMMERLIN VILLAGE 11/12 UNIT 2B IMPROVEMENTS STORM DRAIN LATERALS

ISSUE TO CONSTRUCT 10/07/96

SHEET 36

SHT 36 OF 46

11-32-117

327X-4463-2B