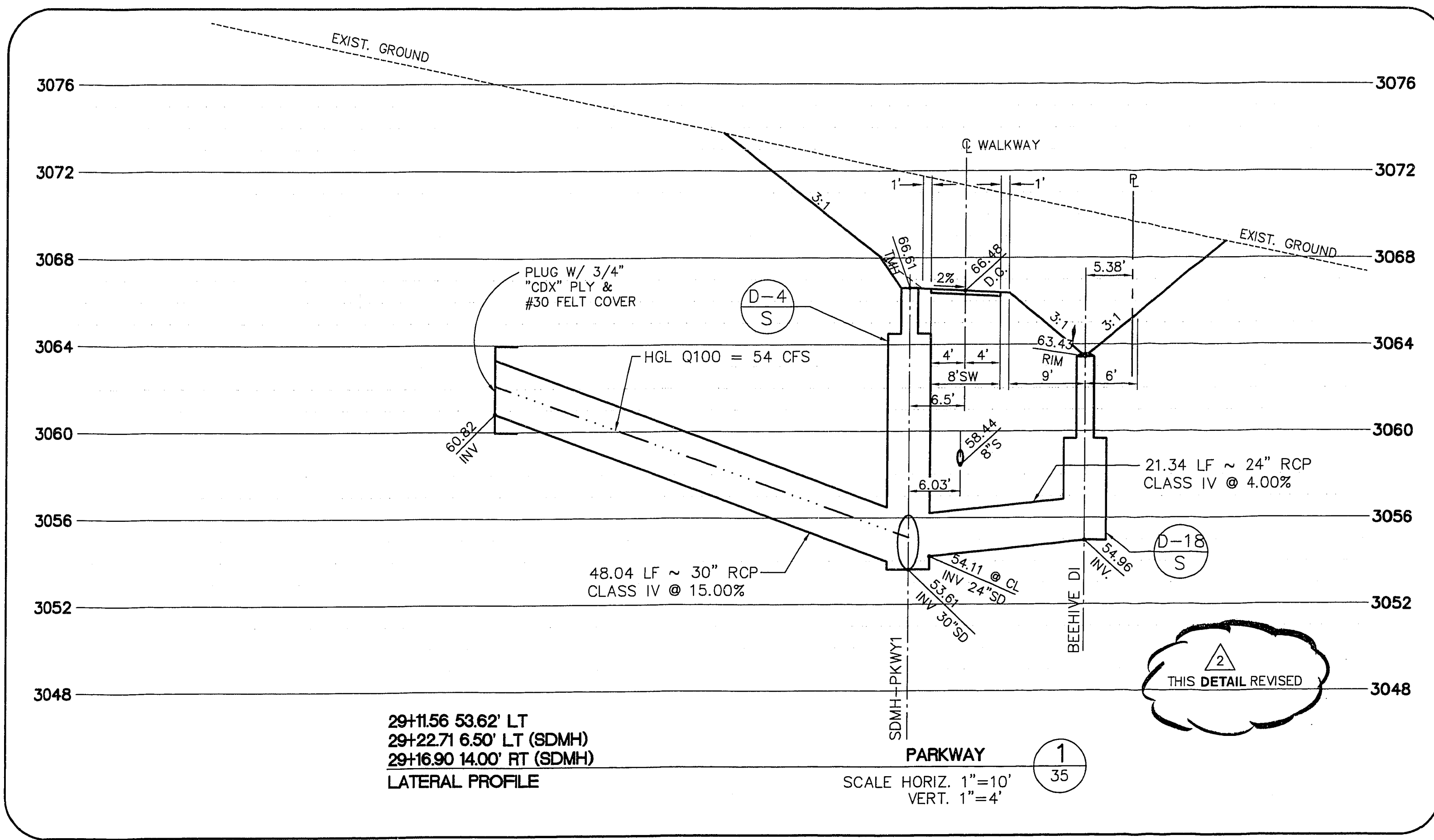
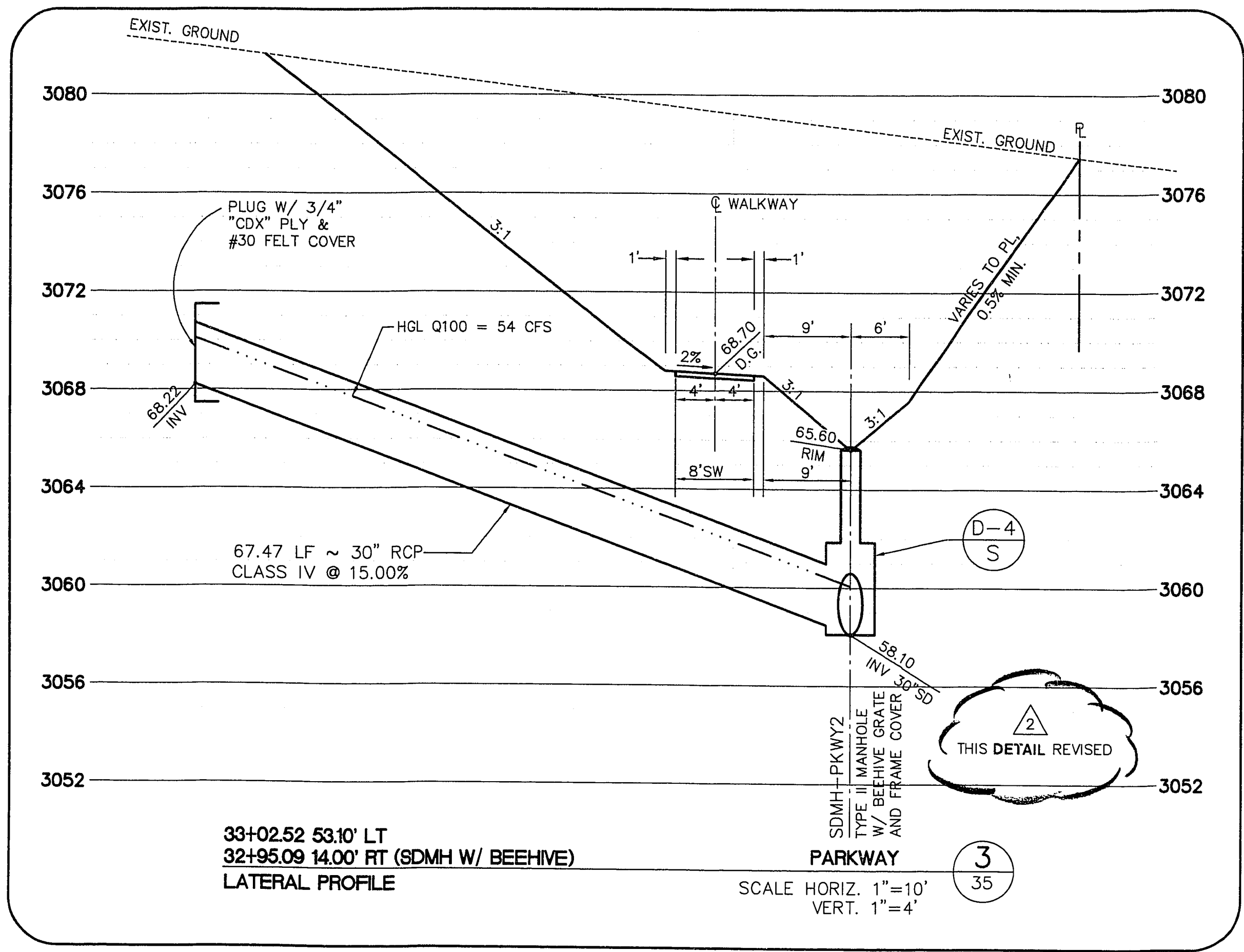
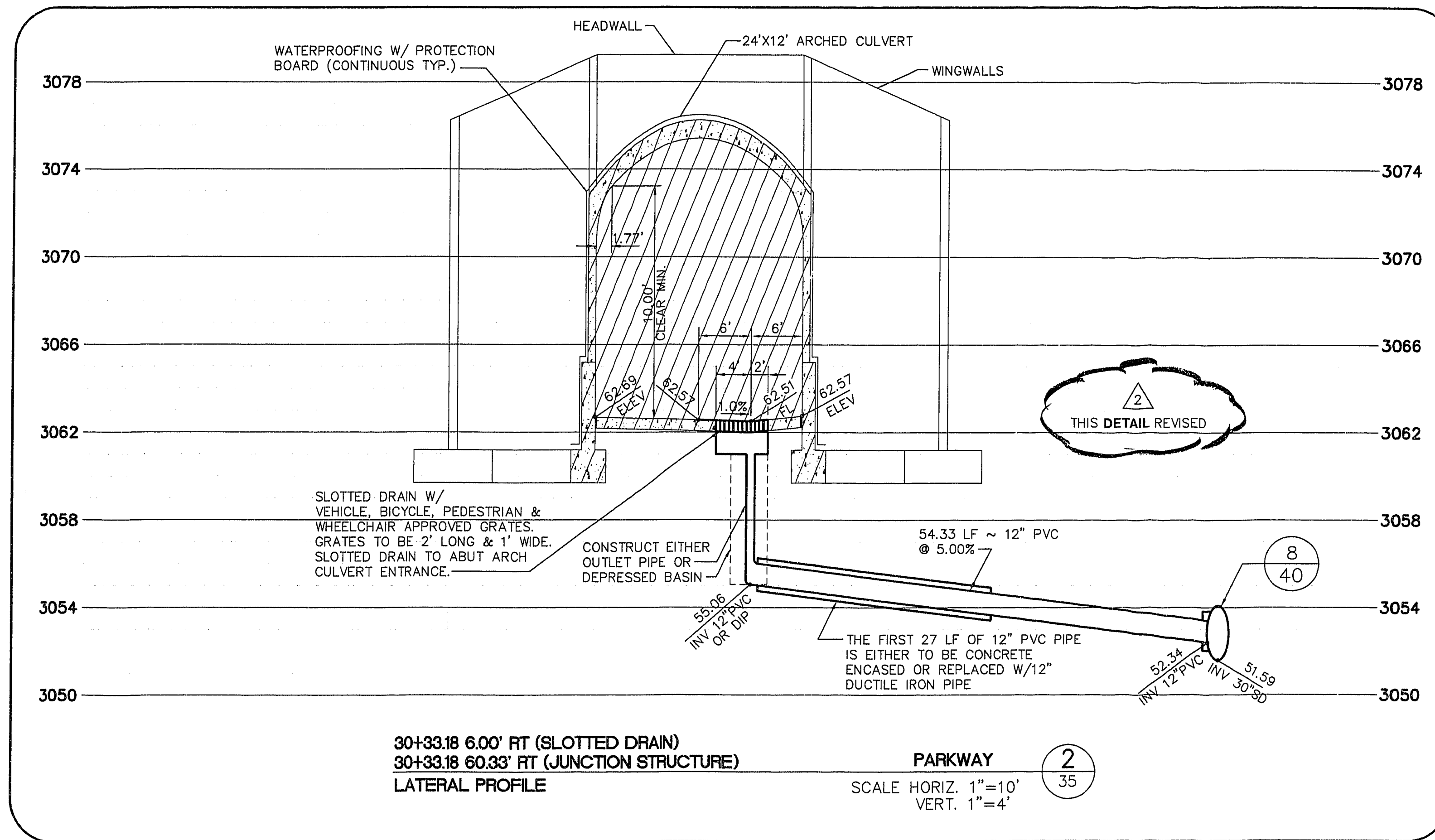
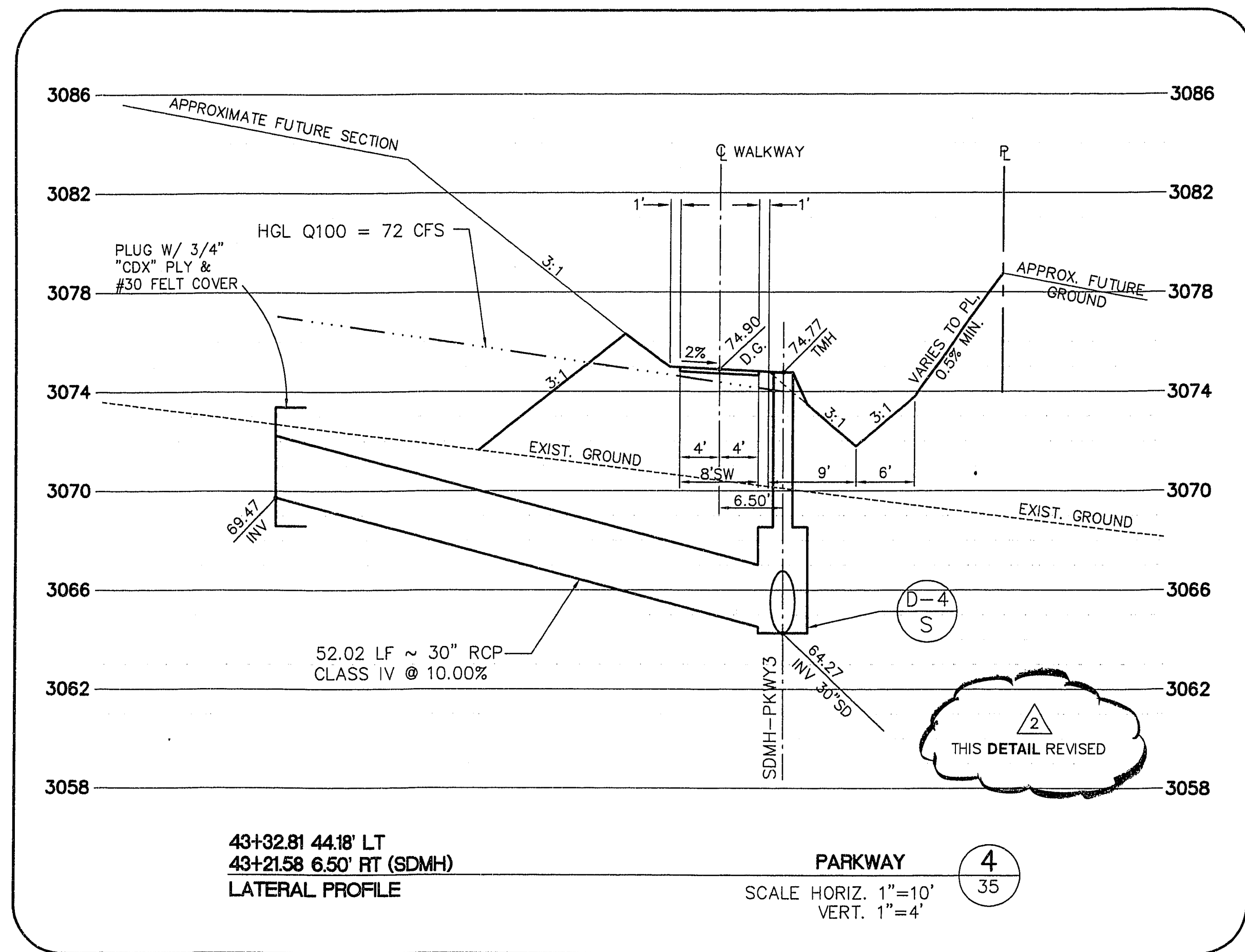


JOB NO. 62011.213 November 21, 1996 1:36:56 p.m. Drawing: D:\11-12\2B-1-D2\112B5D1.5.DWG



RECOMMENDED	DATE	DESCRIPTION
CHRISTOPHER W. ANDERSON	11/7/96	REV. UTIL. PER PASED ROUGH GRAD.
9071	12/4/96	743

**FINAL SUBMITTAL**

**STATE OF NEVADA**  
 REGISTERED PROFESSIONAL ENGINEER  
 CIVIL  
 G. C. WALLACE, INC.  
 Engineering/Architecture  
 1555 SOUTH HANBURY BLVD./LAS VEGAS, NEVADA 89102

**SUMMERLIN**  
**THE ARBORS AT SUMMERLIN**  
**VILLAGE 11/12 UNIT 2B IMPROVEMENTS**  
**PARKWAY**  
**STORM DRAIN LATERALS**

**ISSUE TO CONSTRUCT 10/07/96**

SHEET  
**35**  
 SHT 35 OF 46