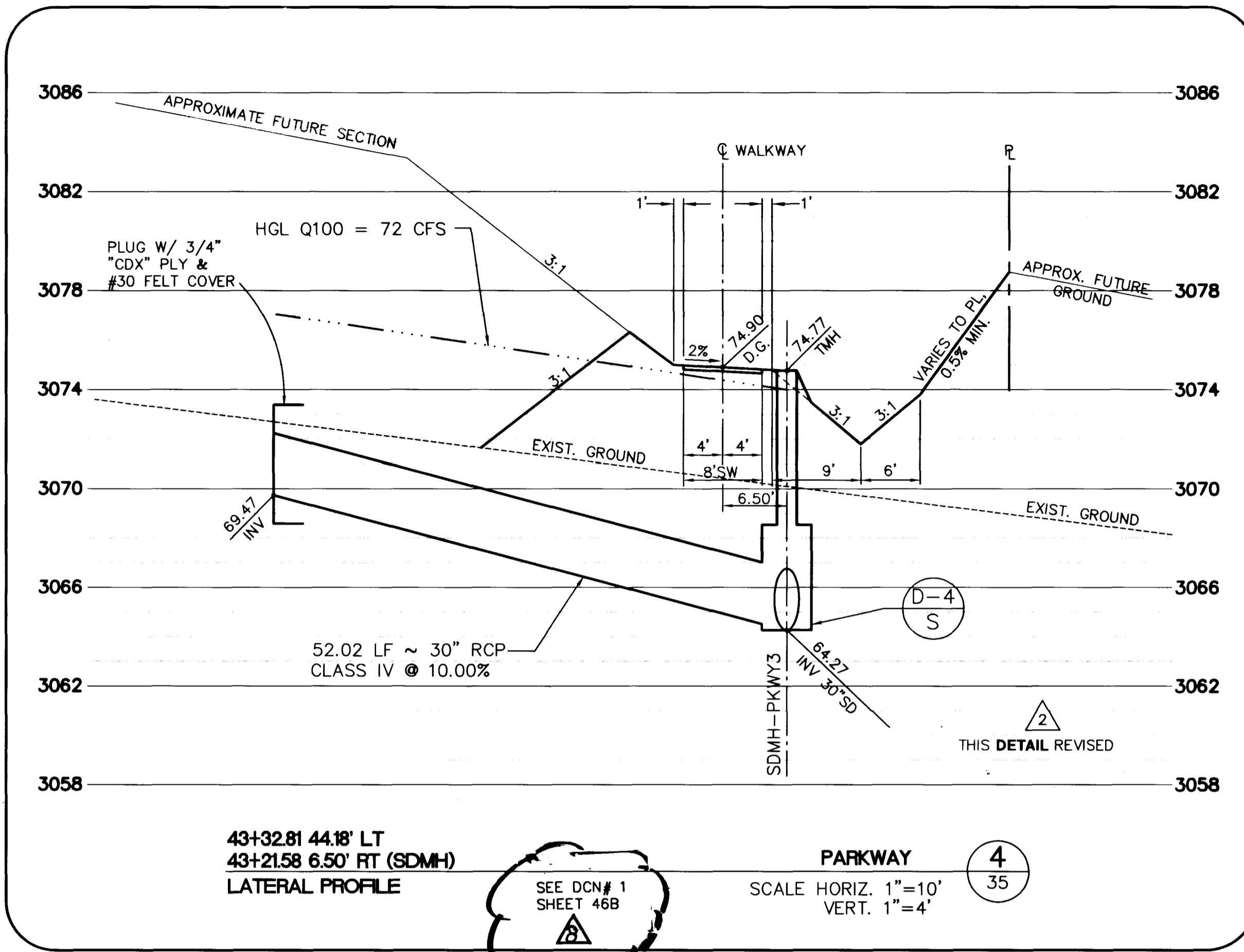


November 21, 1996 1:36:56 p.m. Drawing: D:\11-12\2B-1-D2\1128SCL5.DWG

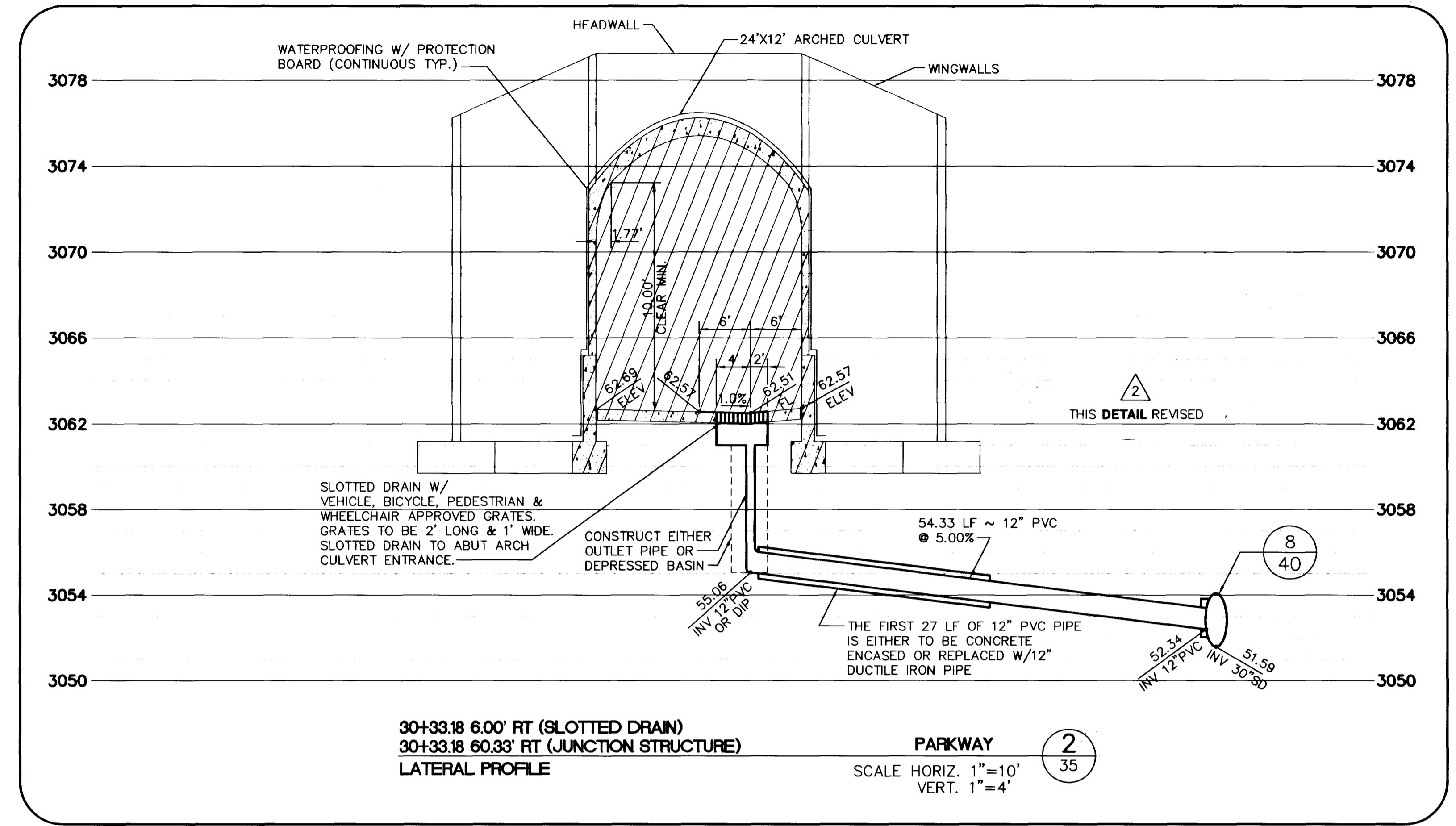
JOB NO. 62011.213



43+32.81 44.18' LT
43+21.58 6.50' RT (SDMH)
LATERAL PROFILE

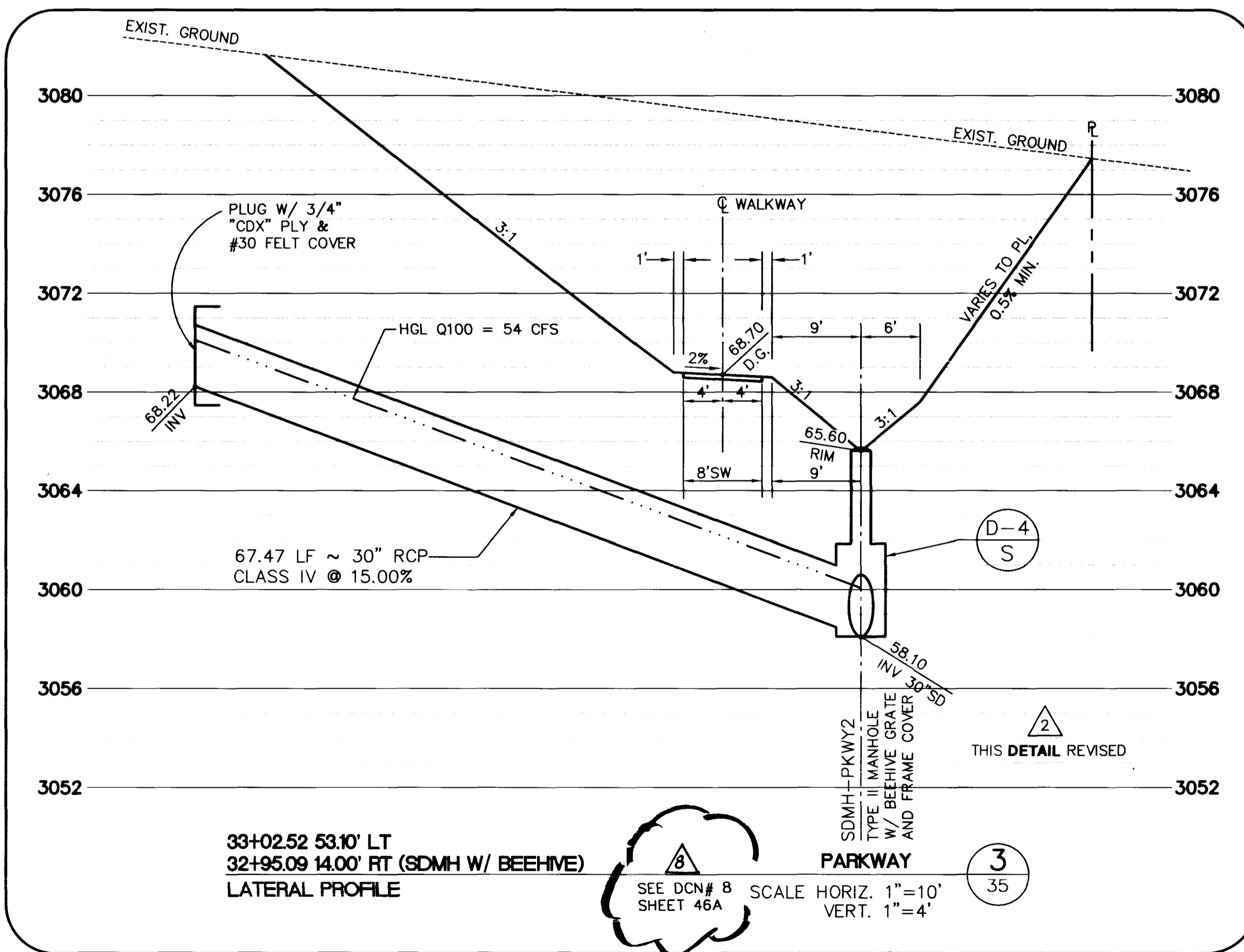
SEE DCN# 1 SHEET 46B

PARKWAY 4
SCALE HORIZ. 1"=10'
VERT. 1"=4'



30+33.18 6.00' RT (SLOTTED DRAIN)
30+33.18 60.33' RT (JUNCTION STRUCTURE)
LATERAL PROFILE

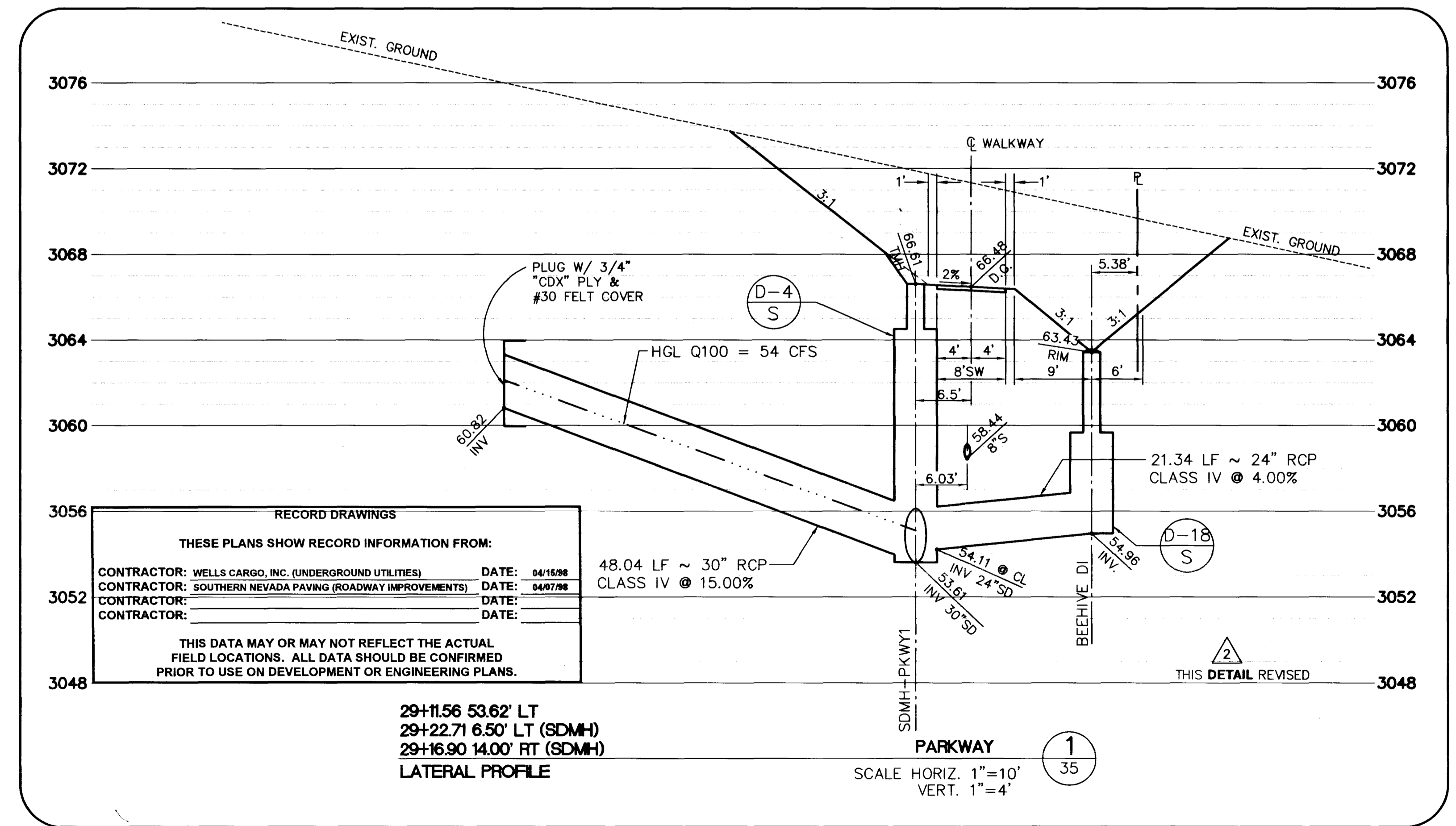
PARKWAY 2
SCALE HORIZ. 1"=10'
VERT. 1"=4'



33+02.52 53.10' LT
32+95.09 14.00' RT (SDMH W/ BEEHIVE)
LATERAL PROFILE

SEE DCN# 8 SHEET 46A

PARKWAY 3
SCALE HORIZ. 1"=10'
VERT. 1"=4'



RECORD DRAWINGS

THESE PLANS SHOW RECORD INFORMATION FROM:

CONTRACTOR: WELLS CARGO, INC. (UNDERGROUND UTILITIES)	DATE: 04/15/96
CONTRACTOR: SOUTHERN NEVADA PAVING (ROADWAY IMPROVEMENTS)	DATE: 04/07/96
CONTRACTOR:	DATE:
CONTRACTOR:	DATE:

THIS DATA MAY OR MAY NOT REFLECT THE ACTUAL FIELD LOCATIONS. ALL DATA SHOULD BE CONFIRMED PRIOR TO USE ON DEVELOPMENT OR ENGINEERING PLANS.

29+11.56 53.62' LT
29+22.71 6.50' LT (SDMH)
29+16.90 14.00' RT (SDMH)
LATERAL PROFILE

PARKWAY 1
SCALE HORIZ. 1"=10'
VERT. 1"=4'

FINAL SUBMITTAL

RECOMMENDED
CHRISTOPHER W. ANDERSON
R.P.E. NO. 5071
DATE 11/7/96
REV. DATE 12/4/96
REVISION DESCRIPTION

REGISTERED PROFESSIONAL ENGINEER - STATE OF NEVADA
G. C. WALLACE, INC.
Engineering/Architecture
1555 SOUTH RAINBOW BLVD./LAS VEGAS, NEVADA 89102

SUMMERLIN
THE ARBORS AT SUMMERLIN
VILLAGE 11/12 UNIT 2B IMPROVEMENTS
PARKWAY
STORM DRAIN LATERALS

ISSUE TO CONSTRUCT 10/07/96

SHEET 35 OF 46

