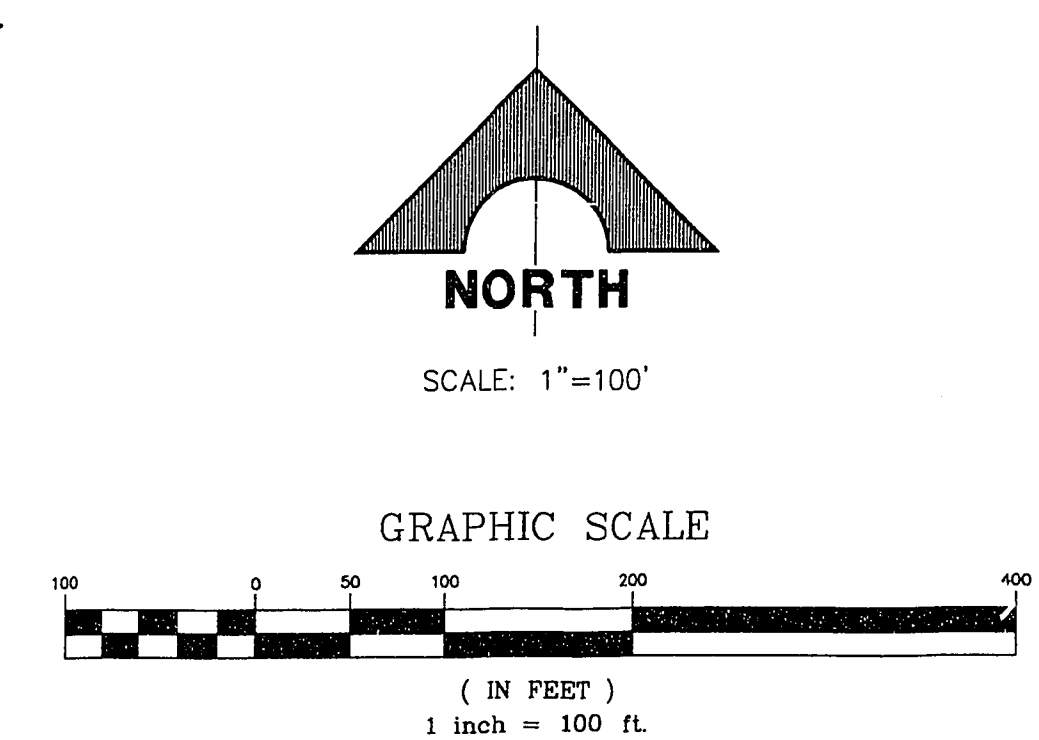
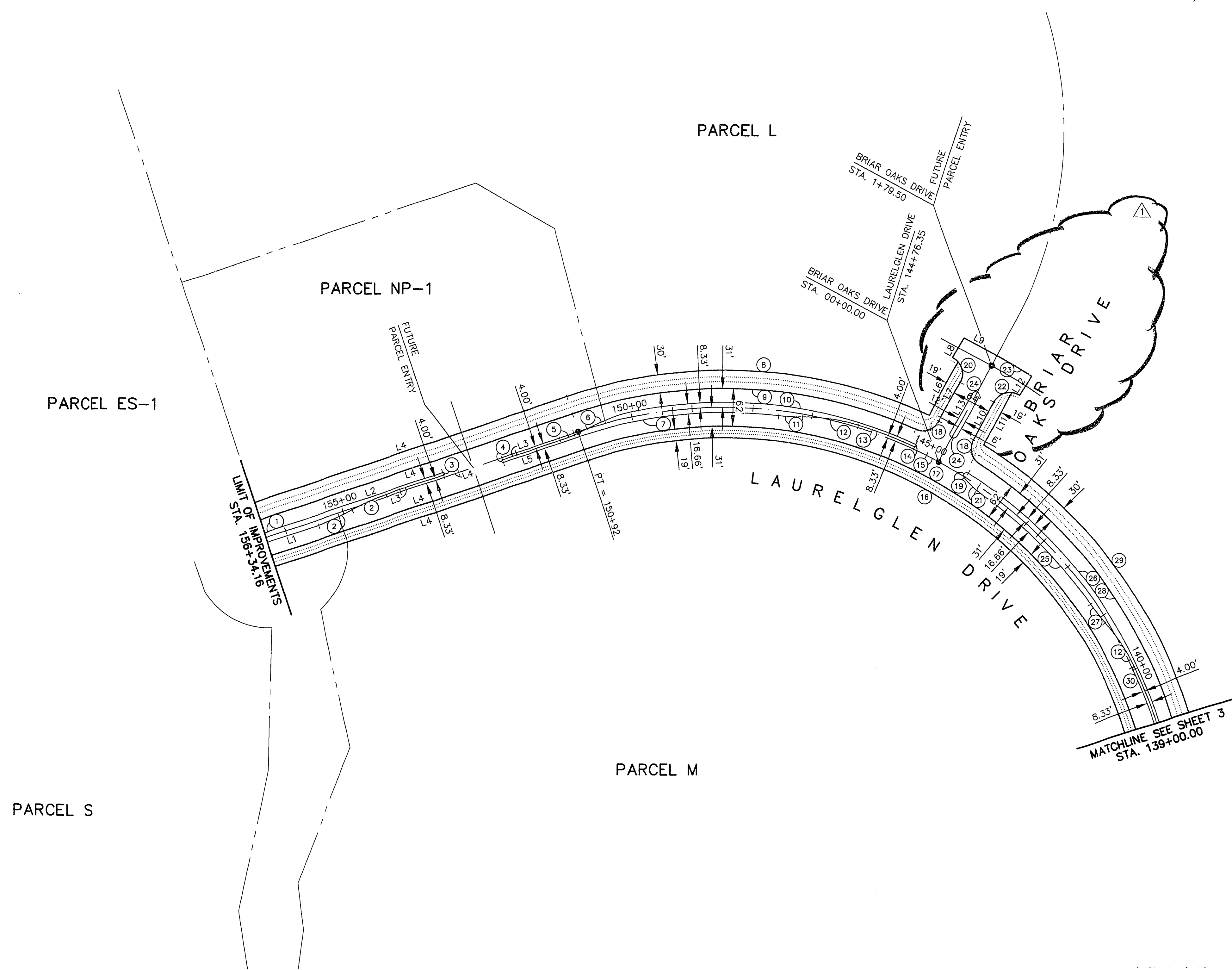


November 19, 1996 10:27:46 a.m. Drawing: D:\11-12\2B-1-01\11.2B-4.DWG

JOB NO. 62011.213

CURVE	DELTA	RADIUS	LENGTH	TANGENT
1	04°05'37"	300.00'	21.43'	10.72'
2	11°38'08"	300.00'	60.92'	30.57'
3	180°00'02"	2.17'	6.82'	---
4	09°16'52"	300.00'	48.60'	24.38'
5	17°17'40"	300.00'	90.55'	45.62'
6	25°43'38"	741.67'	333.02'	169.37'
7	43°25'37"	811.00'	614.69'	322.86'
8	42°38'53"	781.00'	581.34'	304.88'
9	35°24'30"	758.33'	468.64'	242.07'
10	02°37'19"	300.00'	39.91'	19.98'
11	17°43'02"	300.00'	92.77'	46.76'
12	07°35'56"	754.00'	100.00'	50.07'
13	179°41'51"	2.17'	6.81'	---
14	91°03'45"	750.00'	1192.01'	764.04'
15	91°03'45"	700.00'	1112.54'	713.10'
16	91°03'45"	719.00'	1142.74'	732.46'
17	85°35'56"	39.00'	44.83'	27.79'
18	160°59'05"	5.00'	14.05'	28.85'
19	90°00'00"	30.00'	47.12'	30.00'
20	15°58'41"	150.00'	41.83'	21.05'
21	94°02'08"	30.00'	49.24'	32.19'
22	04°02'08"	948.00'	66.77'	33.40'
23	180°00'00"	6.00'	18.85'	---
24	19°45'10"	741.67'	255.69'	129.13'
25	40°12'00"	758.33'	532.05'	277.51'
26	07°37'18"	300.00'	39.91'	19.98'
27	39°38'43"	781.00'	540.41'	281.53'
28	40°25'28"	811.00'	572.19'	298.55'
29	07°18'53"	754.00'	96.26'	48.20'

LINE	BEARING	DISTANCE
L1	N71°19'54"E	88.02'
L2	N71°19'54"E	287.62'
L3	N71°19'54"E	100.00'
L4	N71°19'54"E	542.15'
L5	N71°19'54"E	132.87'
L6	N28°21'51"E	99.52'
L7	N28°21'51"E	72.37'
L8	N28°21'51"E	37.00'
L9	N61°38'09"W	62.00'
L10	N28°21'51"E	70.19'
L11	N28°21'51"E	97.33'
L12	N32°23'59"E	37.00'
L13	N28°21'51"E	72.92'



• ORIGINALLY SET 5/8" REBAR AND AL. CAP STAMPED P.L.S. 9390. SUBSEQUENT REPLACEMENT OF ORIGINAL MONUMENTATION SHALL BE THE FULL RESPONSIBILITY OF THE SUB-CONTRACTING SURVEYOR OF THE ROADWAYS.

FINAL SUBMITTAL

RECOMMENDED: CHRISTOPHER W. ANDERSON
 R.P.E. NO. 5071
 DATE: 10/18/96
 DESCRIPTION: BRIAR OAKS DR. DESIGN REVISION

REVISIONS:
 10/18/96 REV. DATA TO REFLECT
 12/14/96 P.W.

STATE OF NEVADA
 PROFESSIONAL ENGINEER
 CHRISTOPHER W. ANDERSON
 No. 5071

G. C. WALLACE, INC.
 Engineering/Architecture
 1555 SOUTH RAINBOW BLVD., LAS VEGAS, NEVADA 89102

SUMMERLIN
THE ARBORS AT SUMMERLIN
VILLAGE 11/12 UNIT 2B IMPROVEMENTS
CONTROL PLAN 2

ISSUE TO CONSTRUCT 10/07/96

SHEET
4
 SHT 4 OF 46