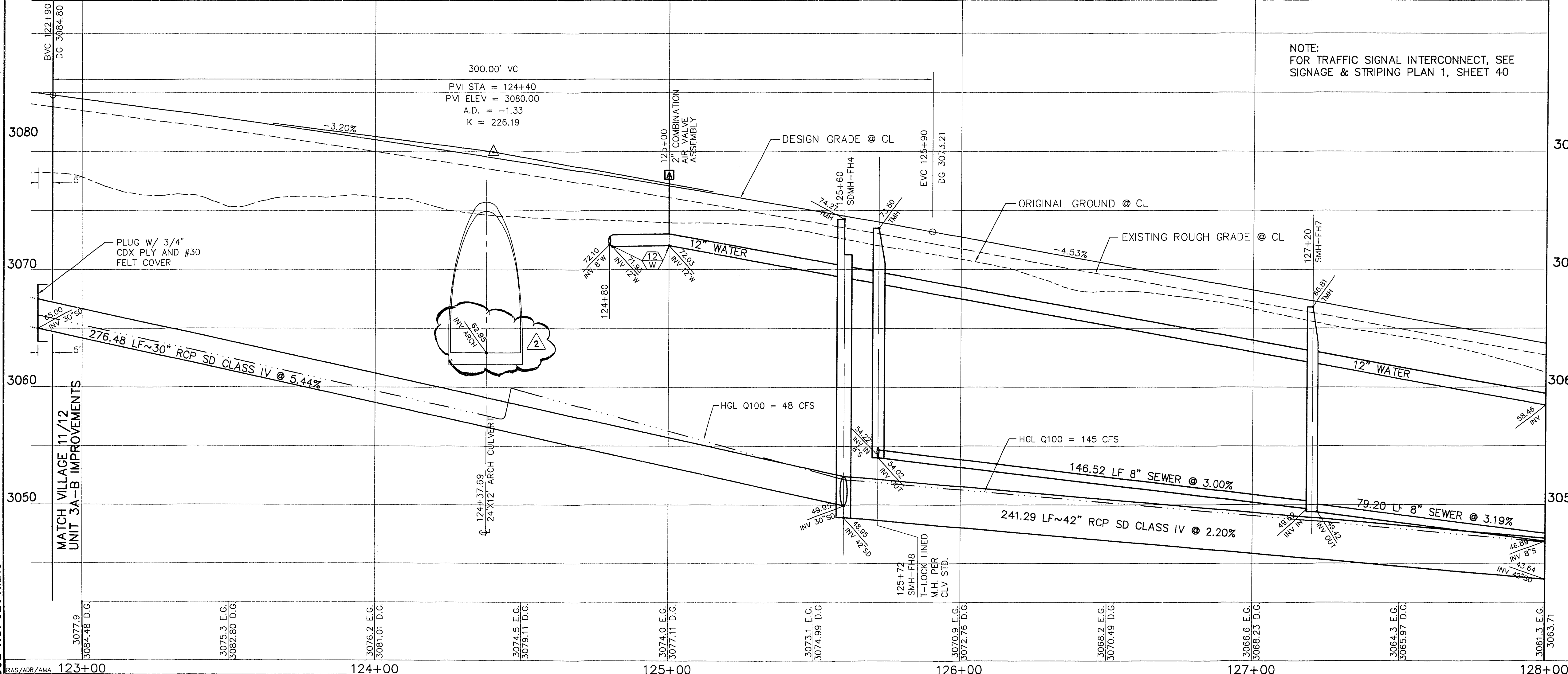
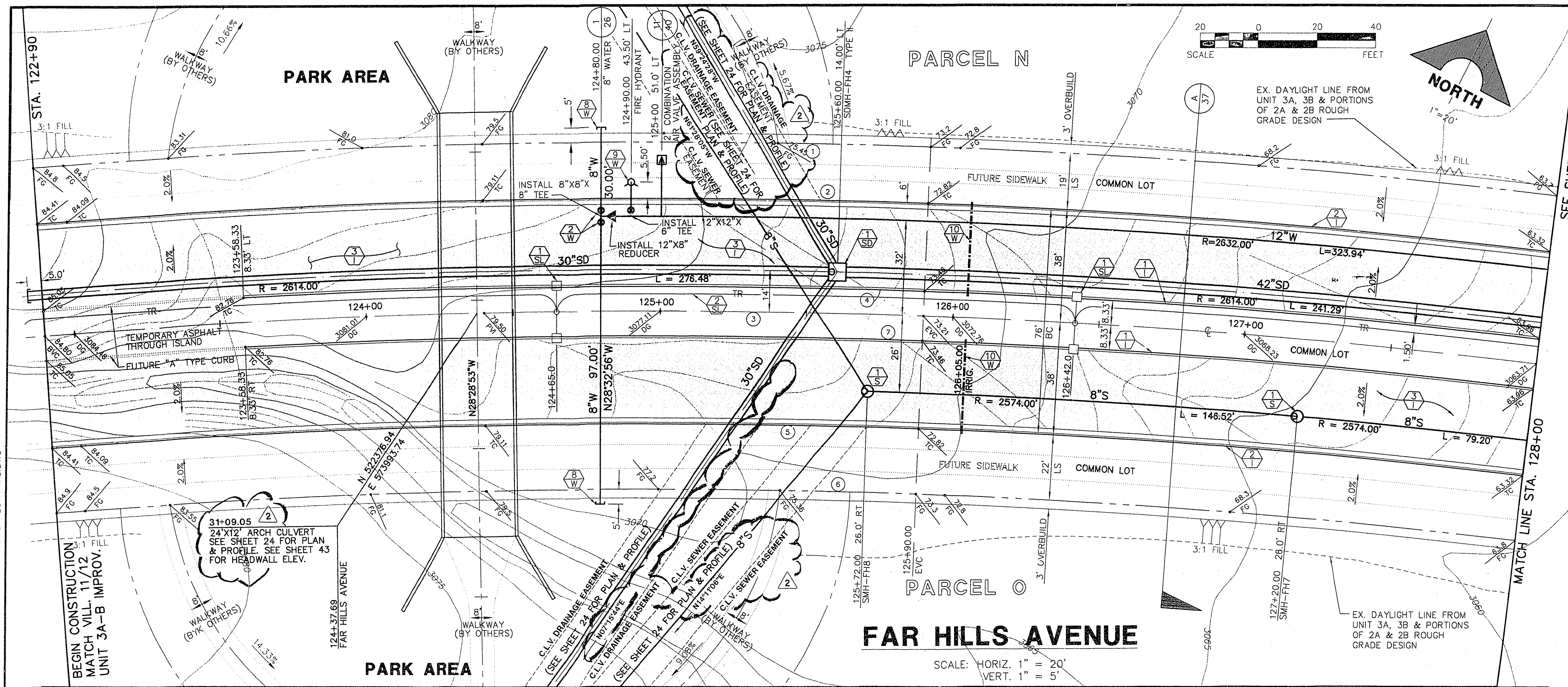


September 06, 1996 1:10:24 p.m. Drawing: C:\DWG\11-12\UNIT-2B\WESTHILL\WH-PP01.DWG  
 Xrefs: WESTHILL.DWG WESTH-MS.DWG



**CURVE DATA**

CURVE	DELTA	RADIUS	LENGTH	TANGENT
1	111°42'00"	2657.00'	521.18'	261.43'
2	111°42'00"	2638.00'	517.45'	259.56'
3	111°42'00"	2600.00'	510.00'	255.82'
4	09°43'59"	2608.33'	443.09'	222.08'
5	111°42'00"	2562.00'	502.55'	255.08'
6	111°42'00"	2540.00'	498.23'	249.92'
7	09°43'59"	2591.67'	440.28'	220.66'

**CONSTRUCTION NOTES**

**IMPROVEMENTS**

- 1 INSTALL "A" TYPE CURB (S-50 S)
- 2 INSTALL "L" TYPE CURB & GUTTER (S-47 S)
- 3 INSTALL AC PAVEMENT PER SECTION SHEETS 37, 38, 39
- 4 INSTALL CROSSWALK (S-78 S)
- 5 INSTALL DEPRESSED CURB (S-75 S)

**WATER**

INSTALL WATER PIPES PER UD & C STD.

- 1 INSTALL 12" DIA. GATE VALVE & BOX (U-34 S)
- 2 INSTALL 8" DIA. GATE VALVE & BOX (U-34 S)
- 3 INSTALL 12"x12"x12" TEE
- 4 INSTALL 12"x12"x12"x12" CROSS
- 5 INSTALL 12"x12" ELBOW
- 6 INSTALL 12"x12"x8" TEE
- 7 INSTALL 12"x12"x8"x6" CROSS
- 8 INSTALL 2" BLOW-OFF & CAP (U-32 S)
- 9 INSTALL FIRE HYDRANT ASSEMBLY COMPLETE PER (U-33 S)
- 10 IRRIGATION SLEEVE (U-18 S)
- 11 GATE VALVE MUST BE IN THE CLOSED POSITION PRIOR TO REMOVAL OF CAP
- 12 INSTALL THRUST BLOCKS ON ALL HORIZONTAL & VERTICAL BENDS, CROSSINGS, & TEES PER LVWD, U.D.S. PLATE NO. 5

**STORM DRAIN**

INSTALL STORM DRAIN PIPES PER SUMMERLIN STD. U-20

- 1 INSTALL STORM DRAIN MANHOLE (D1-D10 S)
- 2 INSTALL 4' TYPE "A" DROP INLET (D-12 S)
- 3 INSTALL TYPE "B" DROP INLET (D-13 S)
- 4 INSTALL TYPE "C" MODIFIED DROP INLET (SEE PLANS FOR LENGTH) (D-14 S)
- 5 INSTALL 6' TYPE "A" DROP INLET (D-12 S)

**SEWER**

INSTALL SEWER PIPES PER SUMMERLIN STD. U-20

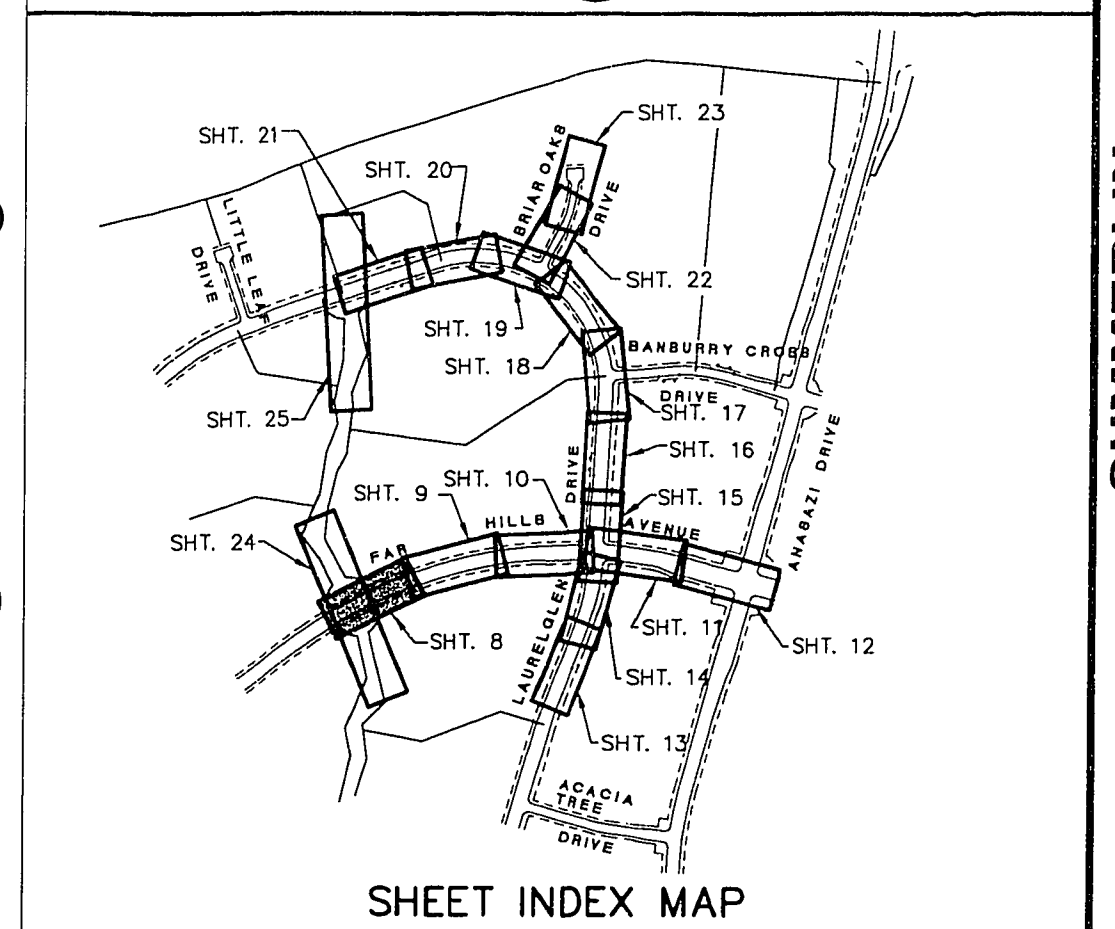
- 1 INSTALL SEWER MANHOLE (SD1-B CLV)

**STREET LIGHTING**

- 1 INSTALL STREET LIGHT, SEE ELECTRICAL PLANS (E-2 S)
- 2 STREET LIGHT OR COMMON TRENCH, SEE ELECTRICAL PLANS

**TRAFFIC**

- 1 INSTALL 2-3" CONDUIT (E-32 S)
- 2 INSTALL NO. 5 PULLBOX (E-32 S)



**APPROVAL:**

*James P. Kodoveris* 9/13/96  
 LAS VEGAS VALLEY WATER DISTRICT DATE

**FINAL SUBMITTAL**

RECOMMENDED CURVE ORDER W. ANDERSON 5071 R.P.E. NO. DATE 11/07/96 REV. UTIL. PER PASSED ROUGH GRAD. APPROVAL

**G.C. WALLACE, INC.**  
 Engineering/Architecture  
 1555 SOUTH RANCHO BLVD./LAS VEGAS, NEVADA 89102

**SUMMERLIN**  
 THE ARBORS AT SUMMERLIN  
 VILLAGE 11/12 UNIT 2B IMPROVEMENTS  
 FAR HILLS AVENUE  
 PLAN & PROFILE STA 122+90 TO 128+00  
 ISSUE TO CONSTRUCT 10/07/96

SHEET 8 OF 46