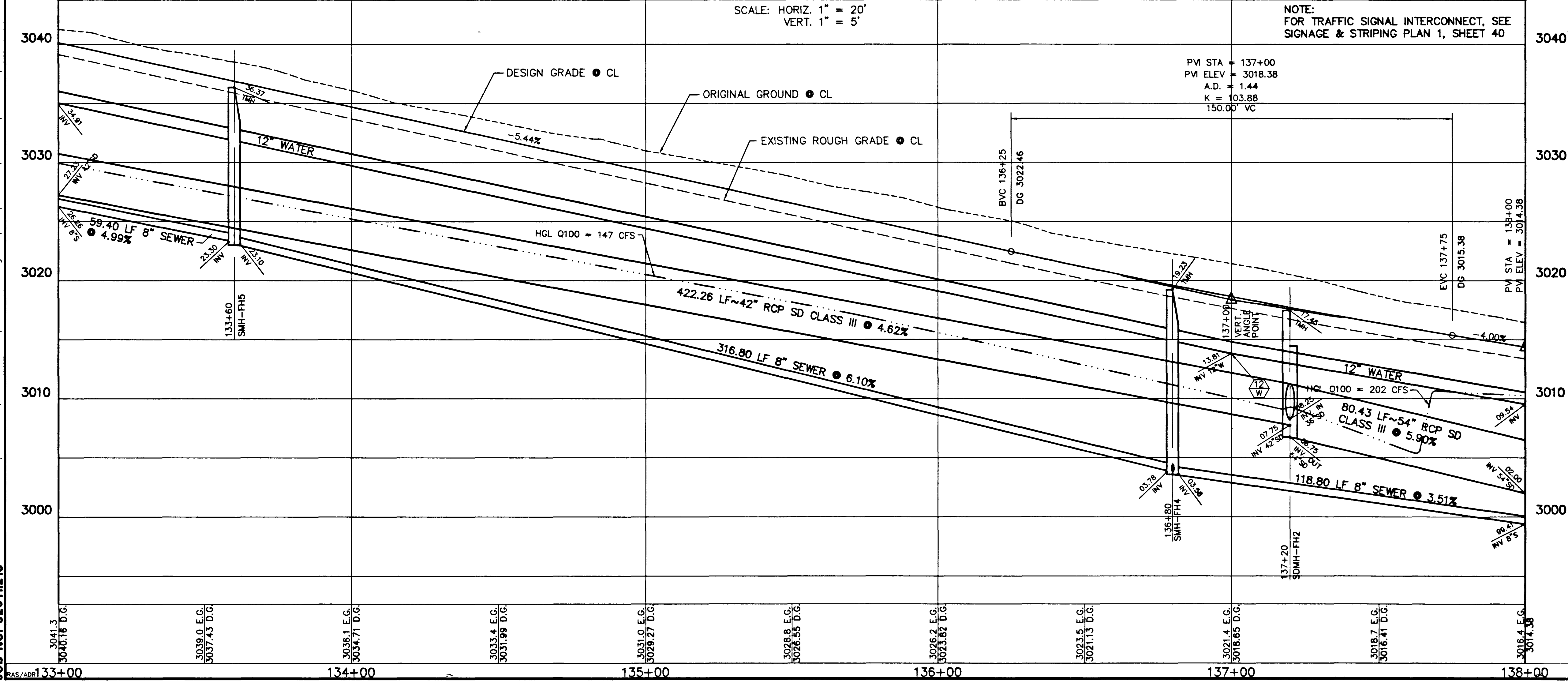
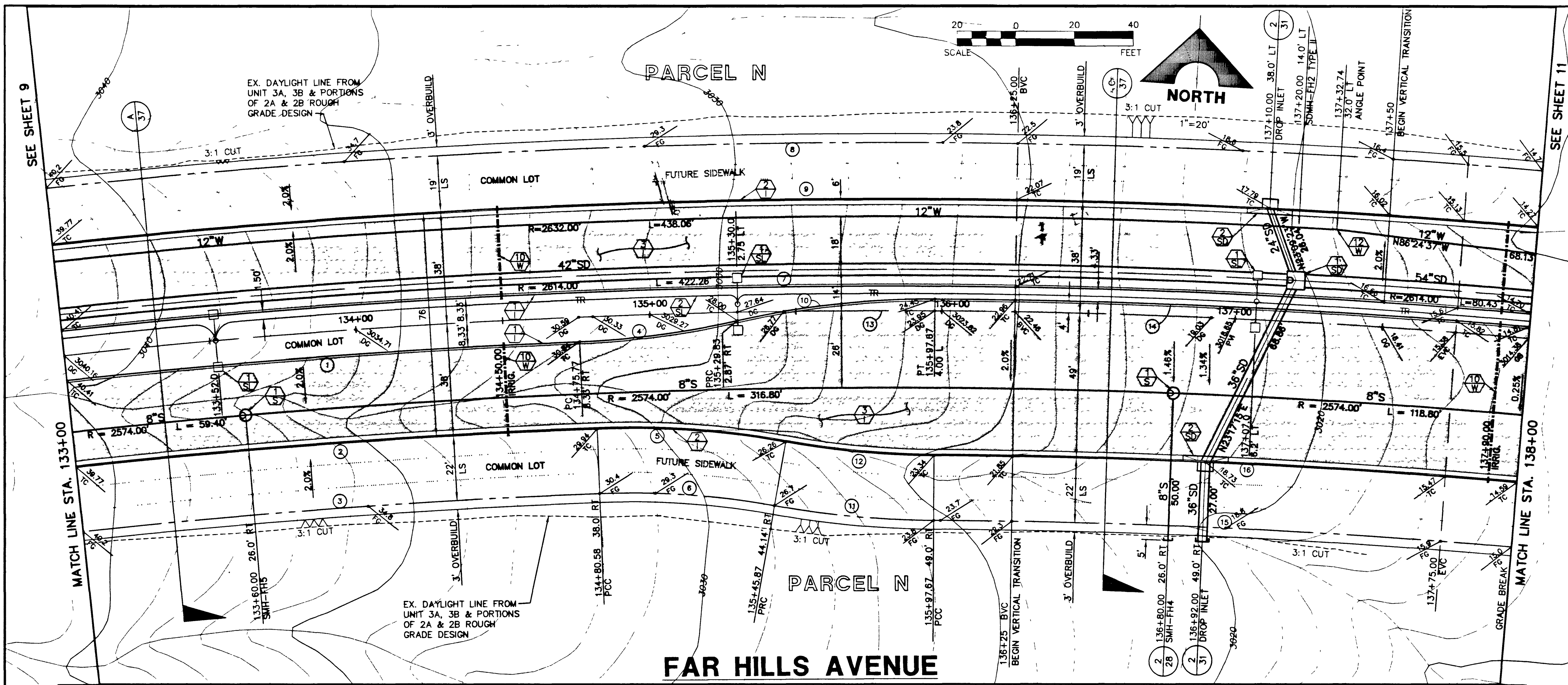


Job No. 62011213

September 06, 1996 1:51:51 p.m. Drawing: C:\DWG\11-12\UNIT-2B\WESTHILL\WH-PROJ.DWG

Scale: HORIZ. 1" = 20' VERT. 1" = 5'



**CURVE DATA** (1) INDICATES CURVE NUMBER (THIS SHEET ONLY)

CURVE	DELTA	RADIUS	LENGTH	TANGENT
1	0352.24	2591.67	175.20	87.63
2	0356.46	2546.00	176.41	88.24
3	1022.07	300.00	54.29	27.22
4	1221.11	300.00	64.68	32.47
5	1271.11	278.00	59.84	30.09
6	1101.06	2608.33	501.60	251.57
7	1101.06	2657.00	510.96	256.27
8	1101.06	2638.00	507.30	254.44
9	1303.18	300.00	68.36	34.33
10	1101.06	322.00	54.92	27.53
11	0946.21	300.00	51.17	25.66
12	1101.06	2600.00	500.00	250.77
13	0427.31	2604.00	202.64	101.37
14	0429.12	2529.00	198.04	99.07
15	0429.31	2551.00	200.00	100.00

**CONSTRUCTION NOTES**

- IMPROVEMENTS**
- INSTALL "A" TYPE CURB (S-50)
  - INSTALL "L" TYPE CURB & GUTTER (S-47)
  - INSTALL AC PAVEMENT PER SECTION SHEETS 37, 38, 39
  - INSTALL CROSSWALK (S-78)
  - INSTALL DEPRESSED CURB (S-78)

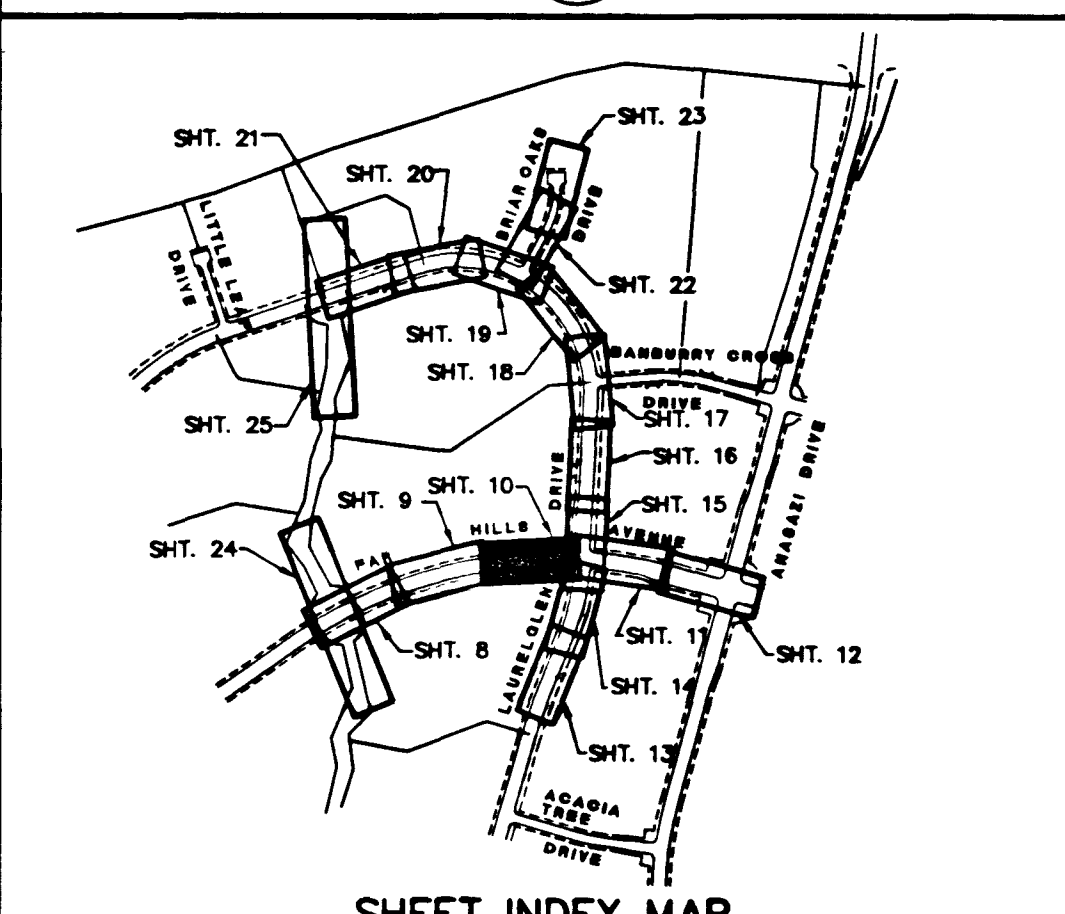
- WATER**
- INSTALL WATER PIPES PER UD & C STD.
  - INSTALL 12" DIA. GATE VALVE & BOX (U-34)
  - INSTALL 8" DIA. GATE VALVE & BOX (U-34)
  - INSTALL 12"x12"x12" TEE
  - INSTALL 12"x12"x12"x12" CROSS
  - INSTALL 12"x12" ELBOW
  - INSTALL 12"x12"x8" TEE
  - INSTALL 12"x12"x8"x6" CROSS
  - INSTALL 2" BLOW-OFF & CAP (U-32)
  - INSTALL FIRE HYDRANT ASSEMBLY COMPLETE PER (U-33)
  - IRRIGATION SLEEVE (U-18)
  - GATE VALVE MUST BE IN THE CLOSED POSITION PRIOR TO REMOVAL OF CAP.
  - INSTALL THRUST BLOCKS IN ALL HORIZONTAL & VERTICAL BENDS, CROSSINGS, & TEES PER LVVWD. U.D.S. PLATE NO. 5

- STORM DRAIN**
- INSTALL STORM DRAIN PIPES PER SUMMERLIN STD. U-20
  - INSTALL STORM DRAIN MANHOLE (D-10)
  - INSTALL 4" TYPE "A" DROP INLET (D-12)
  - INSTALL TYPE "B" DROP INLET (D-13)
  - INSTALL TYPE "C" MODIFIED DROP INLET (SEE PLANS FOR LENGTH) (D-14)
  - INSTALL 6" TYPE "A" DROP INLET (D-12)

- SEWER**
- INSTALL SEWER PIPES PER SUMMERLIN STD. U-20
  - INSTALL SEWER MANHOLE (SD-1) (CLV)

- STREET LIGHTING**
- INSTALL STREET LIGHT, SEE ELECTRICAL PLANS (E-2)
  - STREET LIGHT OR COMMON TRENCH, SEE ELECTRICAL PLANS

- TRAFFIC**
- INSTALL 2-3" CONDUIT (E-32)
  - INSTALL NO. 5 PULLBOX (E-32)



APPROVAL: *Gregory P. Rodwin* 9/13/96  
 LAS VEGAS VALLEY WATER DISTRICT DATE

**FINAL SUBMITTAL**

RECOMMENDED BY: CHRISTOPHER W. ANDERSON 5071 REFE. NO. DATE REV. DATE

REGISTERED PROFESSIONAL ENGINEER STATE OF NEVADA  
 G.C. WALLACE, INC.  
 Engineering/Architecture  
 1555 SOUTH RAINBOW BLVD., SUITE 100, LAS VEGAS, NEVADA 89102

**SUMMERLIN**  
**THE ARBORS AT SUMMERLIN**  
**VILLAGE 11/12 UNIT 2B IMPROVEMENTS**  
**FAR HILLS AVENUE**  
**PLAN & PROFILE STA 133+00 TO 138+00**

SHEET **10** OF 46

