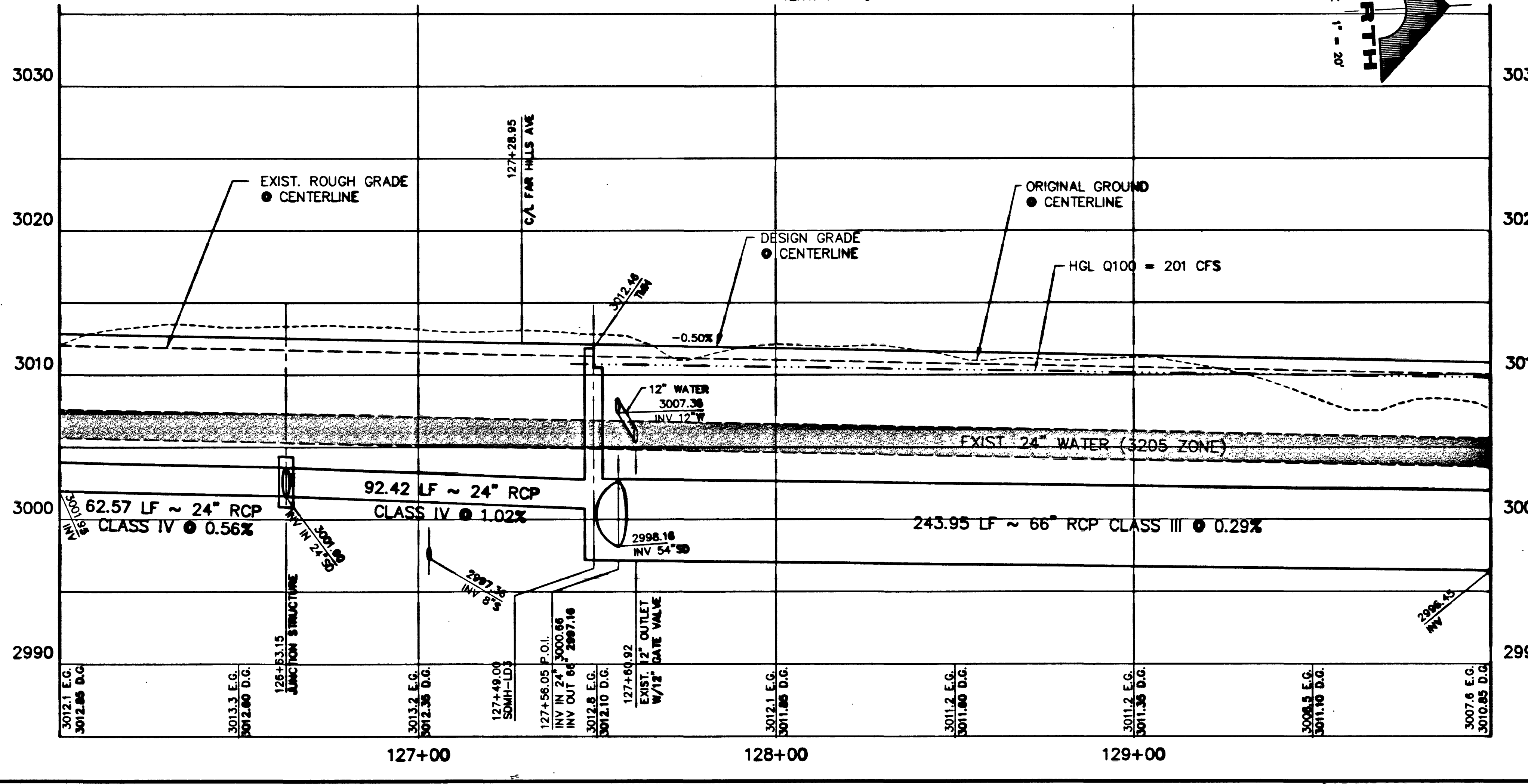
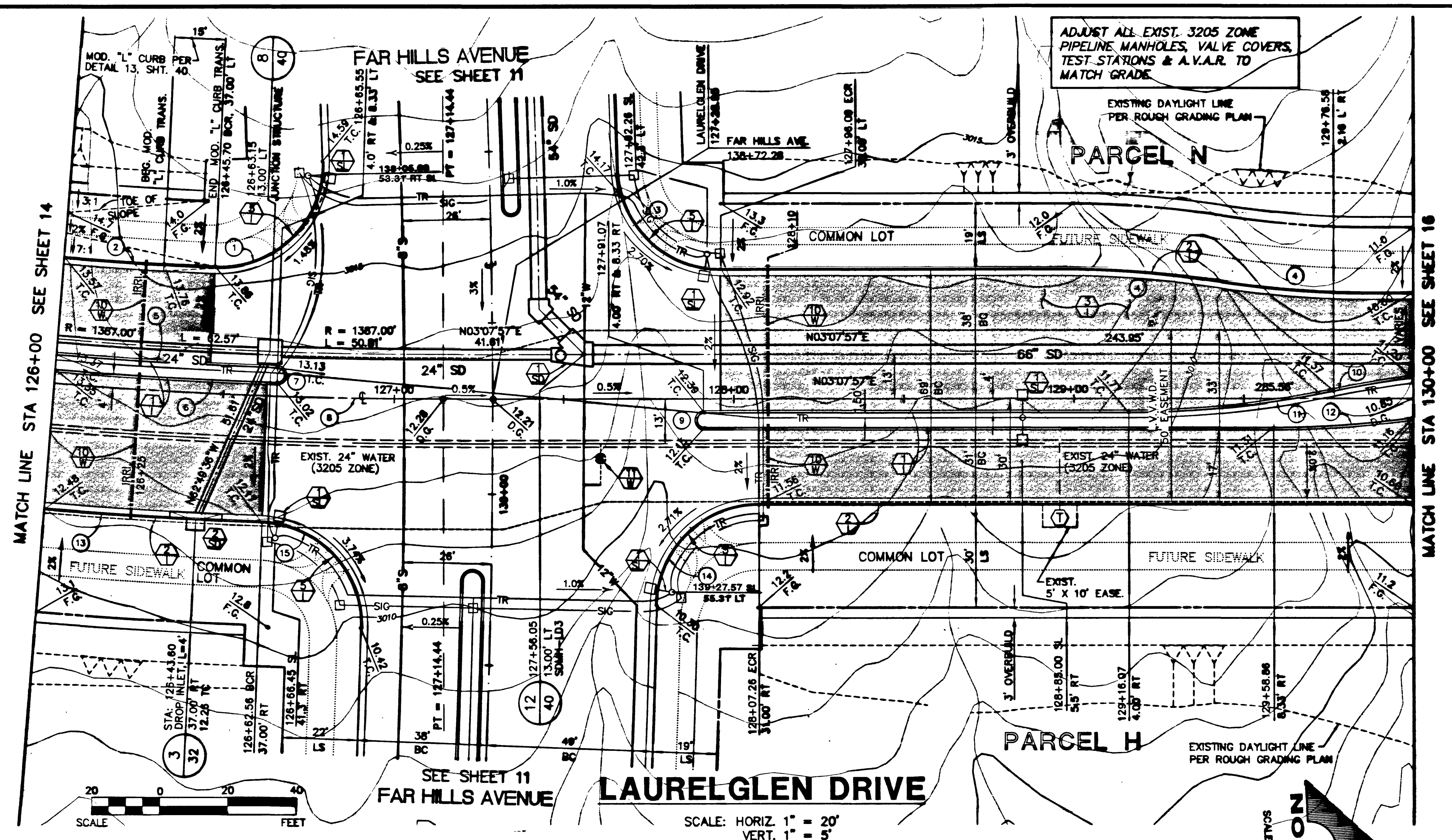


JOB NO. 62011313 - AMA



**CURVE DATA** ① INDICATES CURVE NUMBER (THIS SHEET ONLY)

CURVE	DELTA	RADIUS	LENGTH	TANGENT
1	94.22°	300.00	48.41	32.38
2	01.52°	1363.00	44.50	22.25
3	88.33°	300.00	46.30	28.24
4	08.45°	300.00	45.87	22.94
5	02.40°	1391.87	65.18	32.59
6	02.74°	1396.00	65.32	32.69
7	180.00°	2.17	6.85	32.69
8	04.41°	1400.00	114.44	57.22
9	180.00°	7.18	6.97	32.69
10	04.32°	300.00	23.79	11.88
11	11.38°	300.00	60.87	30.47
12	02.73°	300.00	41.27	20.67
13	02.73°	1437.00	64.22	32.17
14	88.41°	300.00	46.24	29.18
15	88.22°	300.00	46.79	29.17

- CONSTRUCTION NOTES**
- IMPROVEMENTS**
- INSTALL "A" TYPE CURB (S-50)
  - INSTALL "L" TYPE CURB & GUTTER (S-47)
  - INSTALL AC PAVEMENT PER SECTION SHEETS 37, 38, 39
  - INSTALL CROSSWALK (S-78)
  - INSTALL DEPRESSED CURB (S-75)

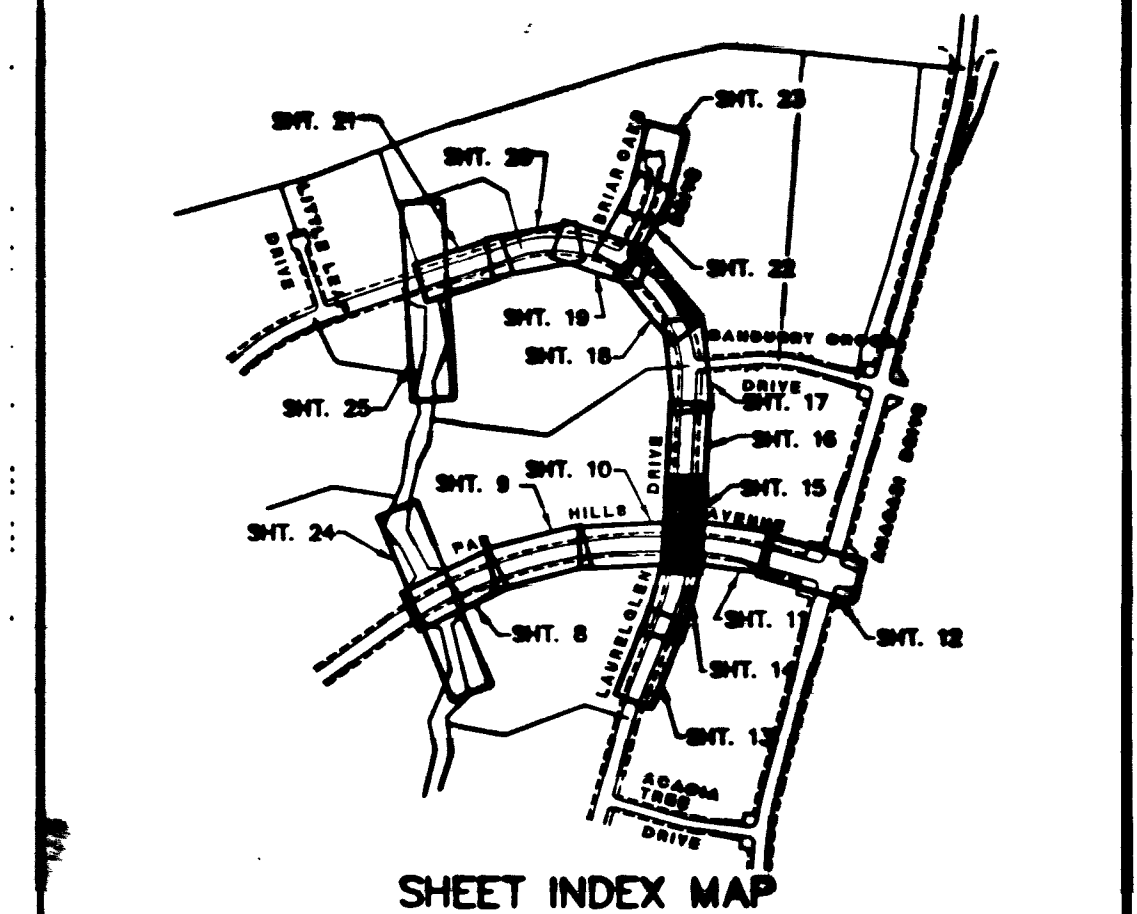
- WATER**
- INSTALL WATER PIPES PER UD & C STD.
  - INSTALL 12" DIA. GATE VALVE & BOX (U-34)
  - INSTALL 8" DIA. GATE VALVE & BOX (U-34)
  - INSTALL 12"x12"x12" TEE
  - INSTALL 12"x12"x12"x12" CROSS
  - INSTALL 12"x12" ELBOW
  - INSTALL 12"x12"x8" TEE
  - INSTALL 12"x12"x8"x6" CROSS
  - INSTALL 2" BLOW-OFF & CAP (U-32)
  - INSTALL FIRE HYDRANT ASSEMBLY COMPLETE PER (U-33)
  - IRRIGATION SLEEVE (U-18)
  - GATE VALVE MUST BE IN THE CLOSED POSITION PRIOR TO REMOVAL OF CAP.
  - INSTALL THRUST BLOCK ON ALL HORIZONTAL & VERTICAL BENDS, CROSSING & TEES PER L.V.W.D. U.D.S. PLATE NO. 5

- STORM DRAIN**
- INSTALL STORM DRAIN PIPES PER SUMMERLIN STD. U-20
  - INSTALL STORM DRAIN MANHOLE (D1-D10)
  - INSTALL 4" TYPE "A" DROP INLET (D-12)
  - INSTALL TYPE "B" DROP INLET (D-13)
  - INSTALL TYPE "C" MODIFIED DROP INLET (SEE PLANS FOR LENGTH) (D-14)
  - INSTALL 6" TYPE "A" DROP INLET (D-12)

- SEWER**
- INSTALL SEWER PIPES PER SUMMERLIN STD. U-20
  - INSTALL SEWER MANHOLE (SD1-B CLV)

- STREET LIGHTING**
- INSTALL STREET LIGHT, SEE ELECTRICAL PLANS (E-2)
  - STREET LIGHT OR COMMON TRENCH, SEE ELECTRICAL PLANS

- TRAFFIC**
- INSTALL 2-3" CONDUIT
  - INSTALL NO. 5 PULLBOX (E-32)



**APPROVAL:**  
*Anthony P. Rodas* 9/13/96  
 LAS VEGAS VALLEY WATER DISTRICT DATE

**FINAL SUBMITTAL**

RECOMMENDED BY: CHRISTOPHER M. ADDRESS: 5071 DATE: 9/13/96

DESIGNED BY: DATE: 9/13/96

DRAWN BY: DATE: 9/13/96

CHECKED BY: DATE: 9/13/96

APPROVED BY: DATE: 9/13/96

**G.C. WALLACE, INC.**  
 Engineering/Architecture 1989 SOUTH SANDY VALLEY BLVD. SUITE 100, SANDY, NV 89131

**SUMMERLIN**  
 THE ARBORS AT SUMMERLIN  
 VILLAGE 17/12 UNIT 2B IMPROVEMENTS  
 LAUREL GLEN DRIVE  
 PLAN & PROFILE STA 128+00 TO 130+00

SHEET **15**  
 SHT 15 OF 48

