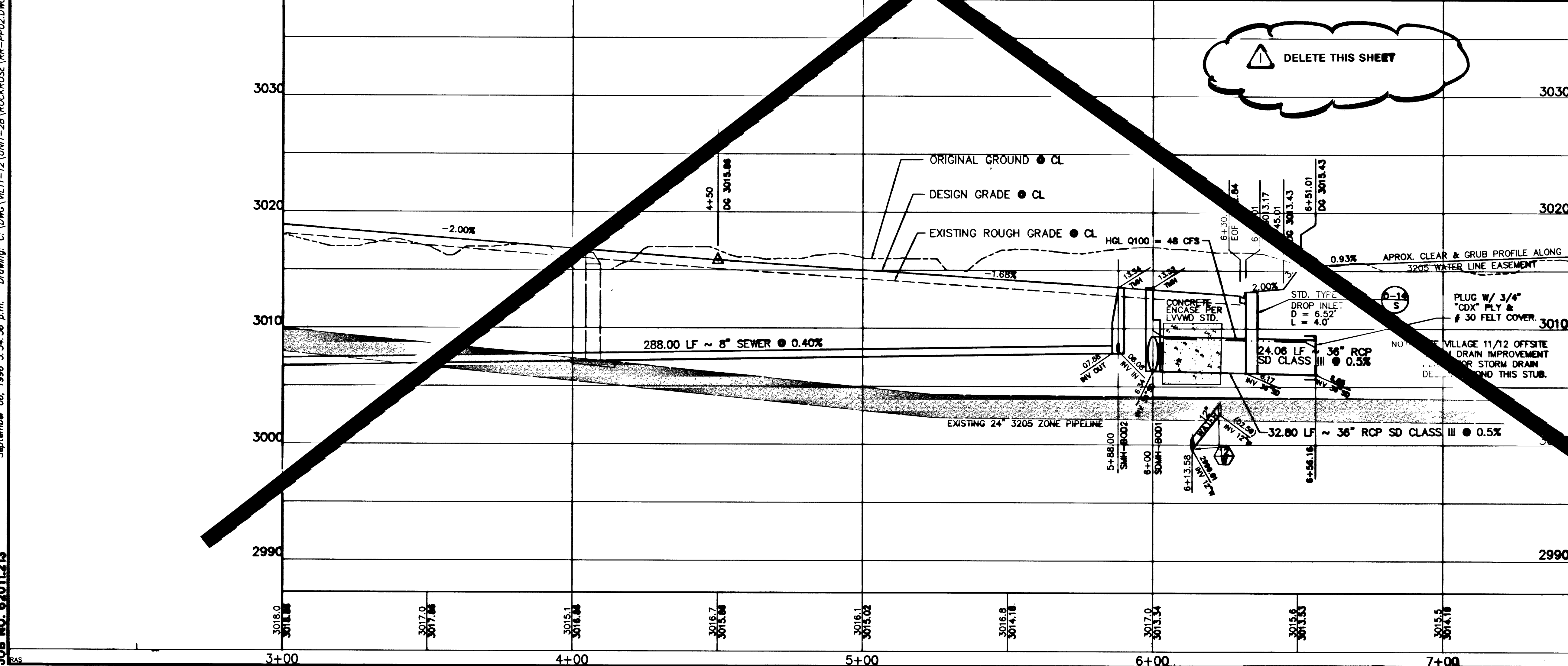
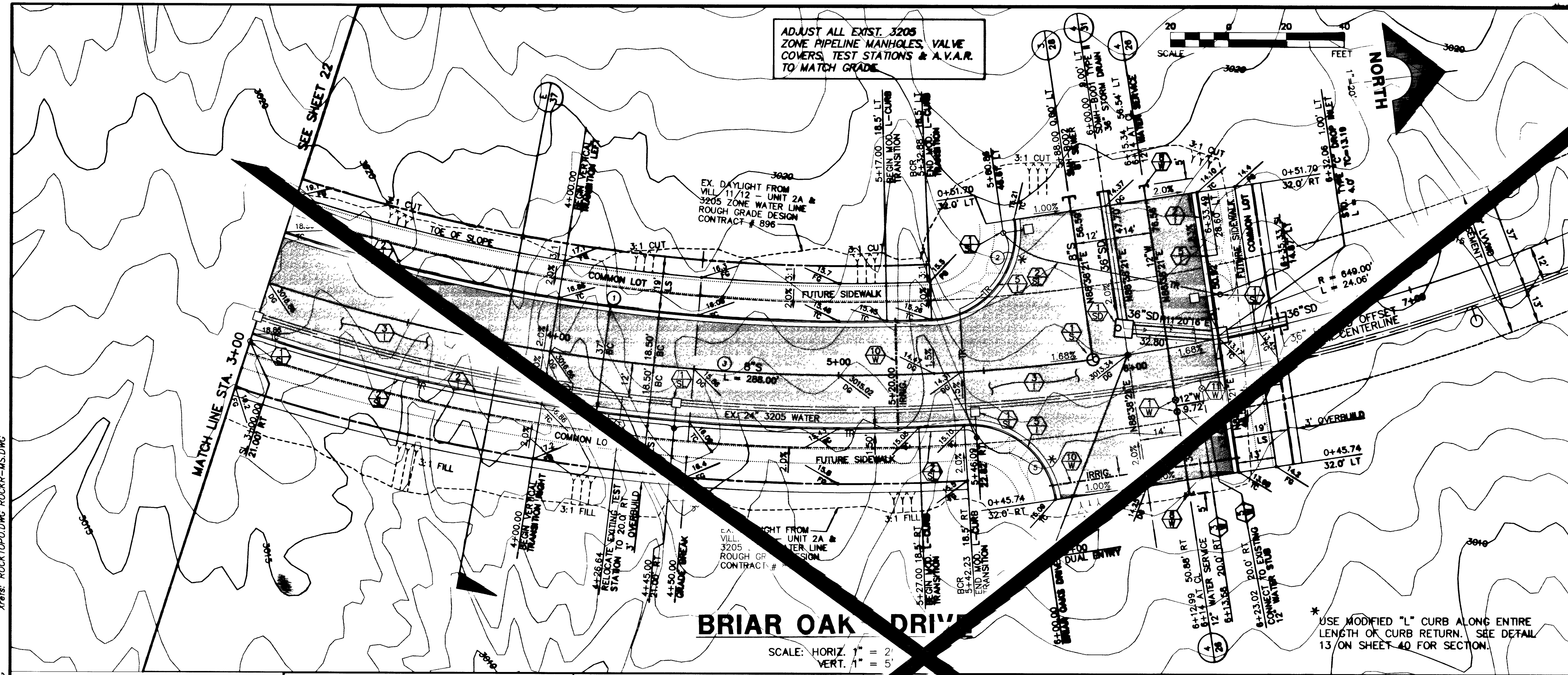


JOB NO. 62011213  
 September 06, 1996 3:54:56 p.m. Drawing: C:\DWC\VL1-12\UNIT-2B\ROCKROSE\RR-PP02.DWG  
 Xrefs: ROCKTOP.DWG ROCKR-MS.DWG



**CURVE DATA** (1) INDICATES CURVE NUMBER (THIS SHEET ONLY)

CURVE	DELTA	RADIUS	LENGTH	TANGENT
1	20°31'41"	631.50'	228.28'	114.36'
2	95°54'40"	30.00'	50.22'	33.77'
3	89°15'58"	650.00'	330.00'	165.00'
4	21°21'07"	668.50'	248.11'	128.02'
5	84°54'27"	30.00'	44.44'	27.44'

**CONSTRUCTION NOTES**

- IMPROVEMENTS**
- ① INSTALL "A" TYPE CURB (S-50)
  - ② INSTALL "L" TYPE CURB & GUTTER (S-47)
  - ③ INSTALL AC PAVEMENT PER SECTION SHEETS 37, 38, 39
  - ④ INSTALL CROSSWALK (S-78)
  - ⑤ INSTALL DEPRESSED CURB (S-75)

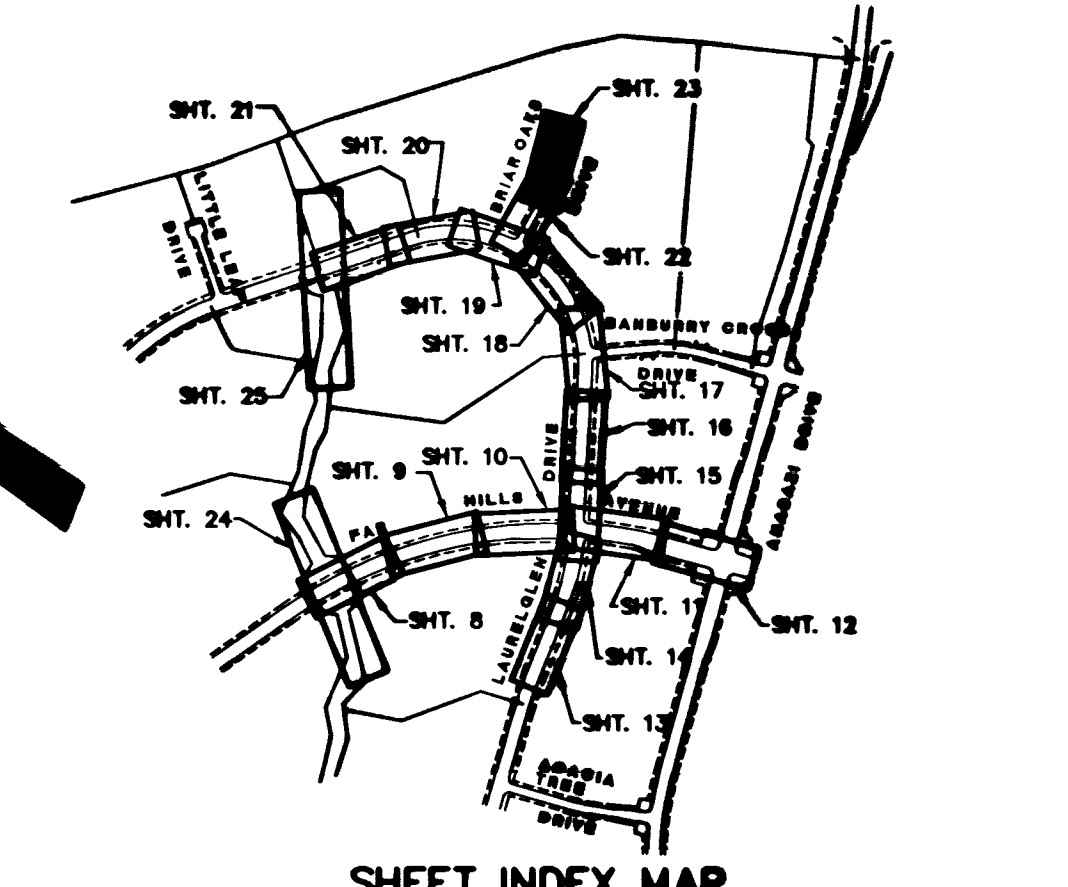
- WATER**
- ① INSTALL WATER PIPES PER UDMC STD.
  - ② INSTALL 12" DIA. GATE VALVE & BOX (U-34)
  - ③ INSTALL 8" DIA. GATE VALVE & BOX (U-34)
  - ④ INSTALL 12"x12"x12" TEE
  - ⑤ INSTALL 12"x12"x12"x12" CROSS
  - ⑥ INSTALL 12"x12" ELBOW
  - ⑦ INSTALL 12"x12"x8" TEE
  - ⑧ INSTALL 12"x12"x8"x6" CROSS
  - ⑨ INSTALL 2" BLOW-OFF & CAP (U-32)
  - ⑩ INSTALL FIRE HYDRANT ASSEMBLY COMPLETE PER (U-33)
  - ⑪ IRRIGATION SLEEVE (U-18)
  - ⑫ GATE VALVE MUST BE IN THE CLOSED POSITION PRIOR TO REMOVAL OF CAP.
  - ⑬ INSTALL THRUST BLOCK ON ALL HORIZONTAL & VERTICAL BENDS, CROSSINGS, & TEES PER L.V.V.W.D. U.D.S. PLAT NO. 5

- STORM DRAIN**
- ① INSTALL STORM DRAIN PIPES PER SUMMERLIN STD. U-20
  - ② INSTALL STORM DRAIN MANHOLE (D-10)
  - ③ INSTALL 4" TYPE "A" DROP INLET (D-12)
  - ④ INSTALL TYPE "B" DROP INLET (D-13)
  - ⑤ INSTALL TYPE "C" MODIFIED DROP INLET (D-14)
  - ⑥ INSTALL 6" TYPE "A" DROP INLET (D-12)

- SEWER**
- ① INSTALL SEWER PIPES PER SUMMERLIN STD. U-20
  - ② INSTALL SEWER MANHOLE (SDI-8/CLV)

- STREET LIGHTING**
- ① INSTALL STREET LIGHT, SEE ELECTRICAL PLANS (E-2)
  - ② STREET LIGHT OR COMMON TRENCH, SEE ELECTRICAL PLANS

- TRAFFIC**
- ① INSTALL 2-3" CONDUIT (E-32)
  - ② INSTALL NO. 5 PULLBOX (E-32)



APPROVAL: *Gregory P. Rodriguez*  
 LAS VEGAS VALLEY WATER DISTRICT  
 DATE: 9/13/96

**FINAL SUBMITTAL**  
 RECOMMENDED BY: [Signature]  
 CHECKED BY: [Signature]  
 DATE: 9/13/96  
 G. C. WALLACE, INC.  
 Engineering/Architecture  
 1985 SOUTH MANLEY BLVD. LAS VEGAS, NEVADA 89102  
**SUMMERLIN THE ARBORS AT SUMMERLIN VILLAGE 11/12 UNIT 2B IMPROVEMENTS BRIAR OAKS DRIVE PLAN & PROFILE STA. 3+00 TO 6+51.01**  
**ISSUE TO CONSTRUCT 10/07/96**  
 SHEET 23 OF 23

