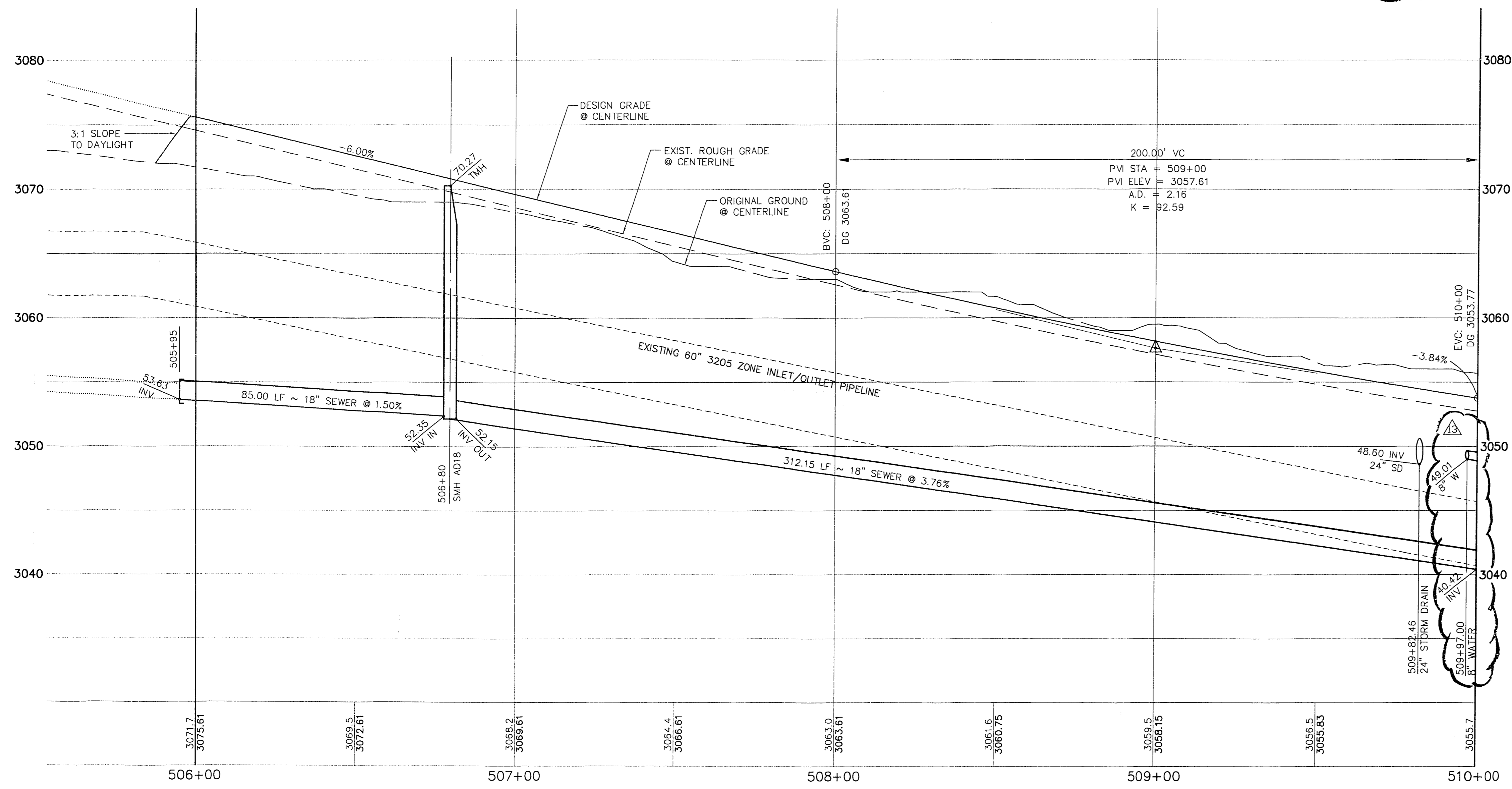
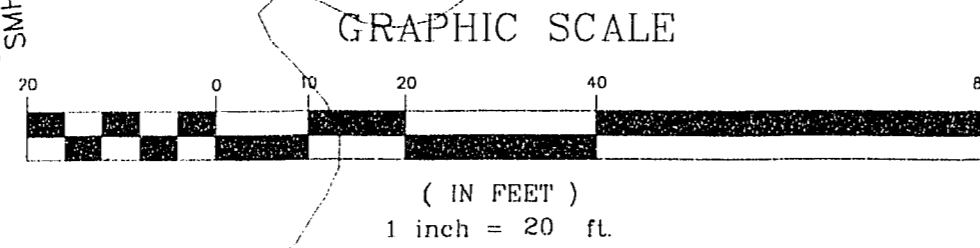
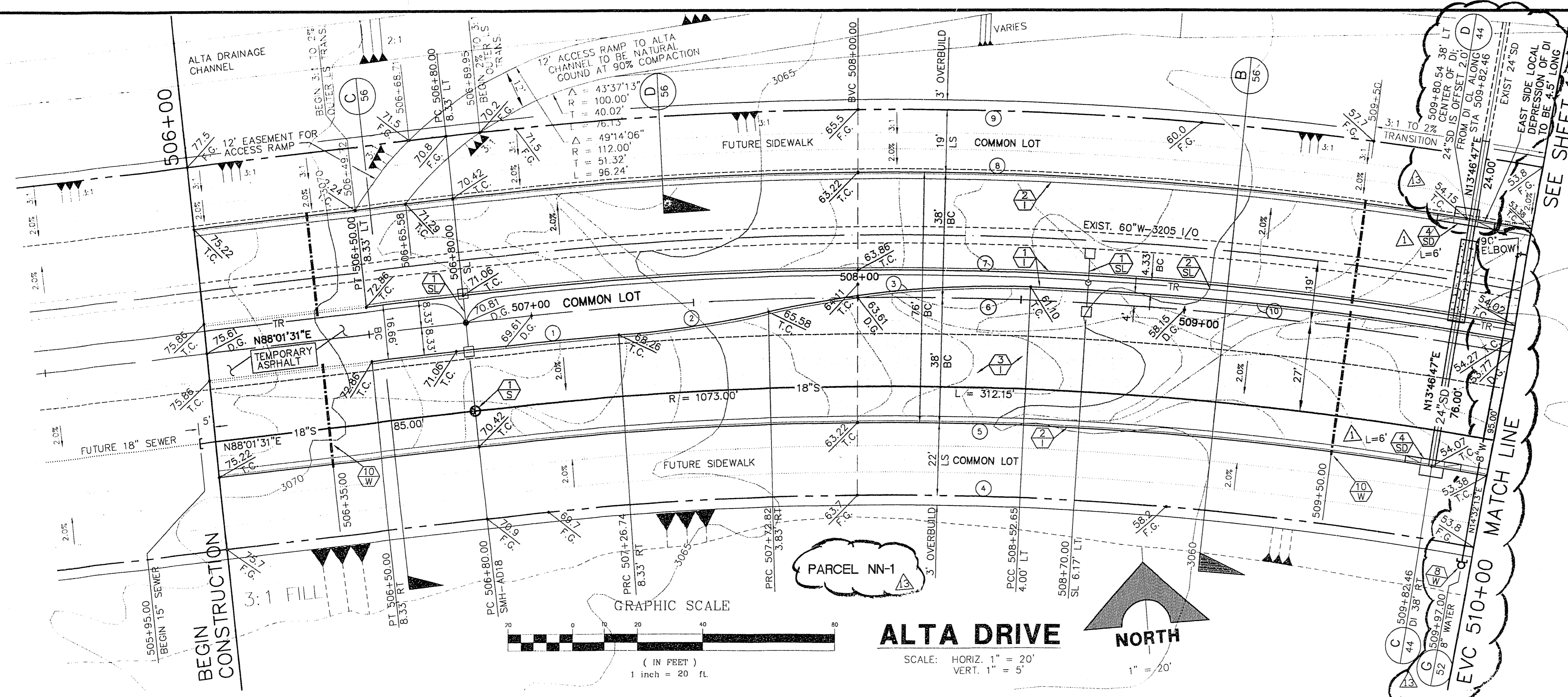


File: AL-T-TOPOLD.WG AL-TA-MS.DWG

Drawing: C:\DWG\VT1-12\UZA-MP\AL-T-PP10.DWG

January 8, 1997 2:16:24 p.m.

JOB NO. 62011.212



CURVE DATA

CURVE	DELTA	RADIUS	LENGTH	TANGENT
1	02°28'04"	1091.67'	46.38'	23.20'
2	08°48'13"	300.00'	48.10'	23.09'
3	15°21'43"	300.00'	80.43'	40.46'
4	16°40'04"	1040.00'	302.54'	152.35'
5	16°40'04"	1040.00'	308.94'	155.57'
6	16°40'04"	1100.00'	320.00'	161.14'
7	16°40'04"	1108.33'	322.42'	162.36'
8	16°40'04"	1138.00'	331.05'	166.70'
9	16°40'04"	1157.00'	336.58'	169.49'
10	07°40'31"	1104.00'	147.89'	74.06'

NOTE:
FOR TRAFFIC SIGNAL CONDUIT SEE SIGNAGE AND STRIPING PLAN 1, SHEET 60.

- CONSTRUCTION NOTES**
- IMPROVEMENTS**
- 1. INSTALL "A" TYPE CURB (S-50 S)
 - 2. INSTALL "L" TYPE CURB & GUTTER (S-47 S)
 - 3. INSTALL AC PAVEMENT PER SECTION SHEETS 56, 57, & 58
 - 4. INSTALL CROSSWALK (S-78 S)
 - 5. INSTALL DEPRESSED CURB (S-75 S)

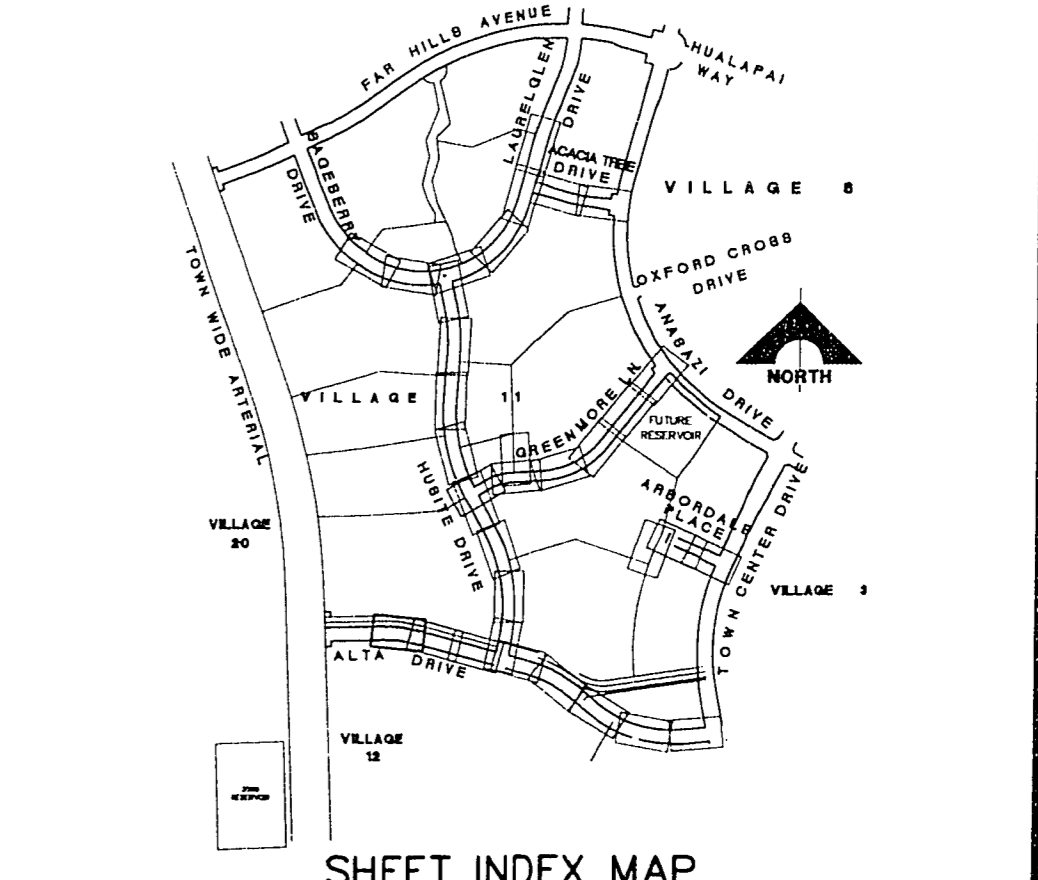
- WATER**
- 1. INSTALL WATER PIPES PER SUMMERLIN STD. U-20
 - 2. INSTALL 12" DIA. GATE VALVE & BOX (U-34 S)
 - 3. INSTALL 8" DIA. GATE VALVE & BOX (U-34 S)
 - 4. INSTALL 12"x12"x12" TEE
 - 5. INSTALL 12"x12"x12"x12" CROSS
 - 6. INSTALL 12"x12" ELBOW
 - 7. INSTALL 12"x12"x8" TEE
 - 8. INSTALL 12"x12"x8"x6" CROSS
 - 9. INSTALL 2" TEMP. BLOW-OFF & CAP (U-32 S)
 - 10. INSTALL FIRE HYDRANT ASSEMBLY COMPLETE PER (U-33 S)
 - 11. IRRIGATION SLEEVE (U-18 S)
 - 12. EXISTING GATE VALVE MUST BE IN CLOSED POSITION PRIOR TO REMOVAL OF CAP

- STORM DRAIN**
- 1. INSTALL STORM DRAIN PIPES PER SUMMERLIN STD. U-20
 - 2. INSTALL STORM DRAIN MANHOLE (D1-D10 S)
 - 3. INSTALL 4" TYPE "A" DROP INLET (D-12 S)
 - 4. INSTALL TYPE "B" DROP INLET (D-13 S)
 - 5. INSTALL TYPE "C" MODIFIED DROP INLET (D-14 S) (SEE PLANS FOR LENGTH)
 - 6. INSTALL 6" TYPE "A" DROP INLET (D-12 S)

- SEWER**
- 1. INSTALL SEWER PIPES PER SUMMERLIN STD. U-20
 - 2. INSTALL SEWER MANHOLE (SD1-B GLV)

- STREET LIGHTING**
- 1. INSTALL STREET LIGHT, SEE ELECTRICAL PLANS (E-2 S)
 - 2. STREET LIGHT OR COMMON TRENCH, SEE ELECTRICAL PLANS

- TRAFFIC**
- 1. INSTALL 2-3" CONDUIT (E-32 S)
 - 2. INSTALL NO. 5 PULLBOX (E-32 S)



APPROVAL: 157 111-9 5-21-96

DATE: 1-14-97

SHEET 10 OF 64

FINAL SUBMITTAL

RECOMMENDED BY: CHRISTOPHER W. ANDERSON

DATE: 1/14/97

REVISIONS:

NO.	DATE	DESCRIPTION
1	1/14/97	FOR TRAFFIC SIGNAL CONDUIT SEE SIGNAGE AND STRIPING PLAN 1, SHEET 60.

C.C. WALLACE, INC.
Engineering/Architecture

SUMMERLIN VILLAGE 11/12 THE ARBORS - UNIT 2A
ALTA DRIVE
PLAN & PROFILE
STA 506+00 TO 510+00