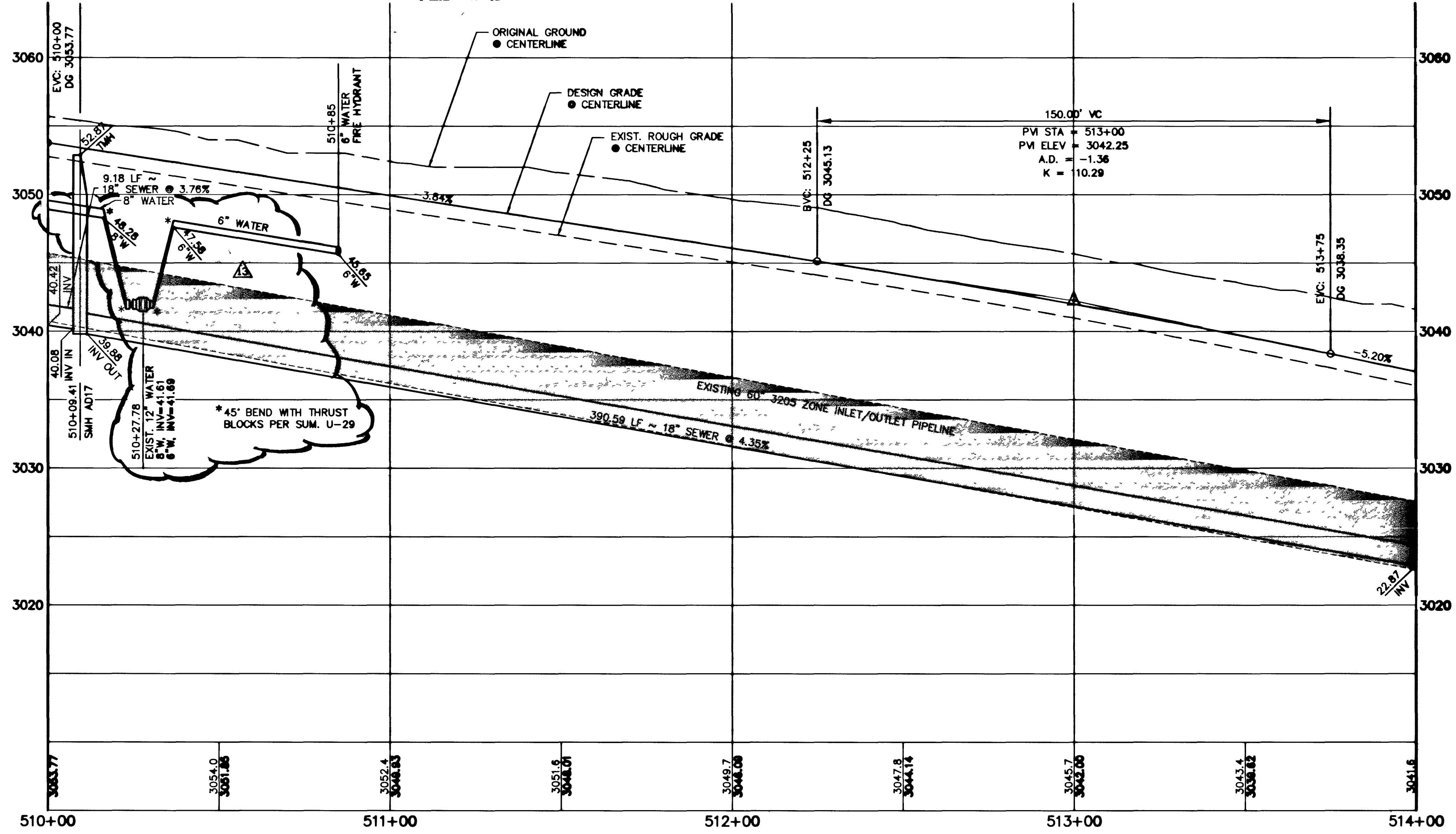
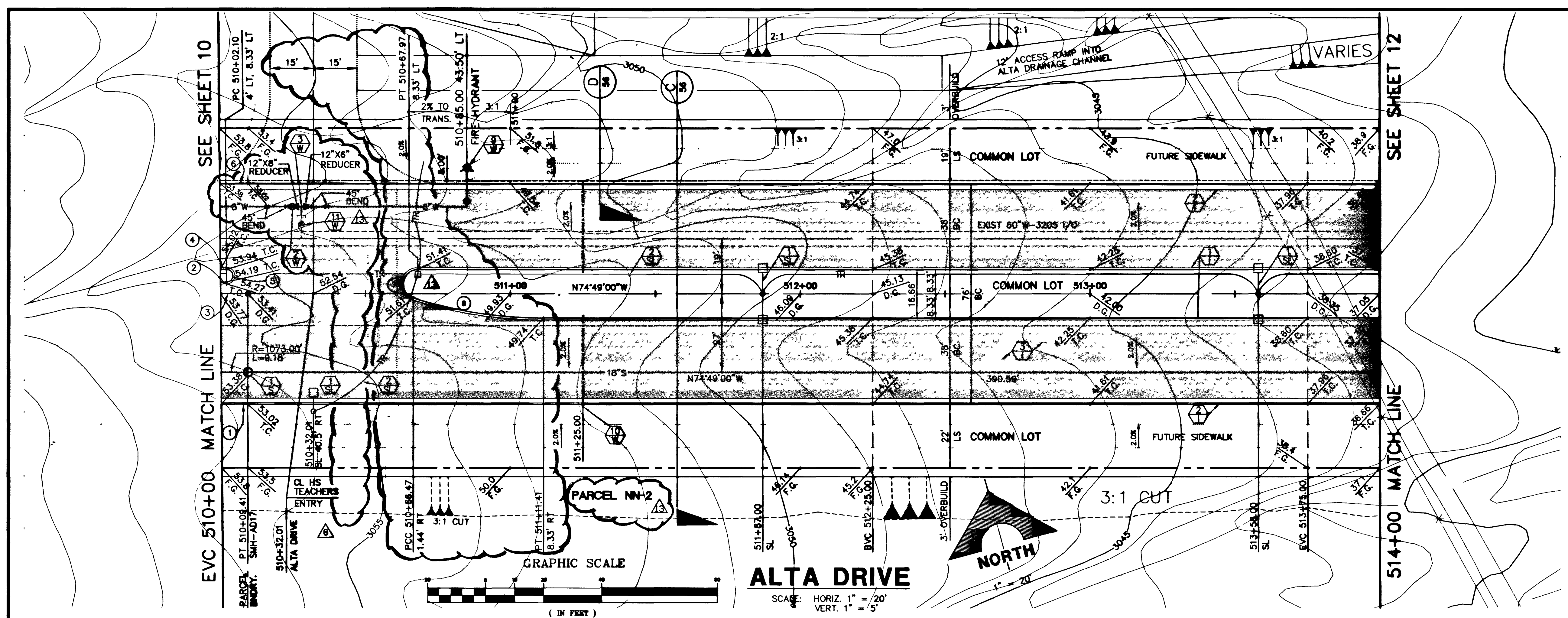


Xref: ALT-TOPO.DWG ALTA-MS.DWG

Drawing: C:\DWG\11-12\U2A-IMP\ALT-PP11.DWG

January 8, 1997 10:29:18 a.m.

JOB NO. 62011.212



**CURVE DATA** (1 INDICATES CURVE NUMBER (THIS SHEET ONLY))

CURVE	DELTA	RADIUS	LENGTH	TANGENT
0029	28	1062.00	9.00	4.54
0030	28	1104.00	2.11	1.05
0031	28	1108.33	8.41	4.21
0032	28	1108.33	8.12	1.08
180000	2.11	6.79	6.79	4.87
0033	28	1136.00	8.74	4.87
162300	3.00	14.18	14.18	32.81
1725	3.00	150.00	45.84	23.00

NOTE: FOR TRAFFIC SIGNAL CONDUIT SEE SIGNAGE AND STRIPING PLAN 1, SHEET 60.

- CONSTRUCTION NOTES**
- IMPROVEMENTS**
- INSTALL "A" TYPE CURB (S-30)
  - INSTALL "L" TYPE CURB & GUTTER (S-47)
  - INSTALL AC PAVEMENT PER SECTION SHEETS 56, 57, & 58
  - INSTALL CROSSWALK (S-78)
  - INSTALL DEPRESSED CURB (S-75)

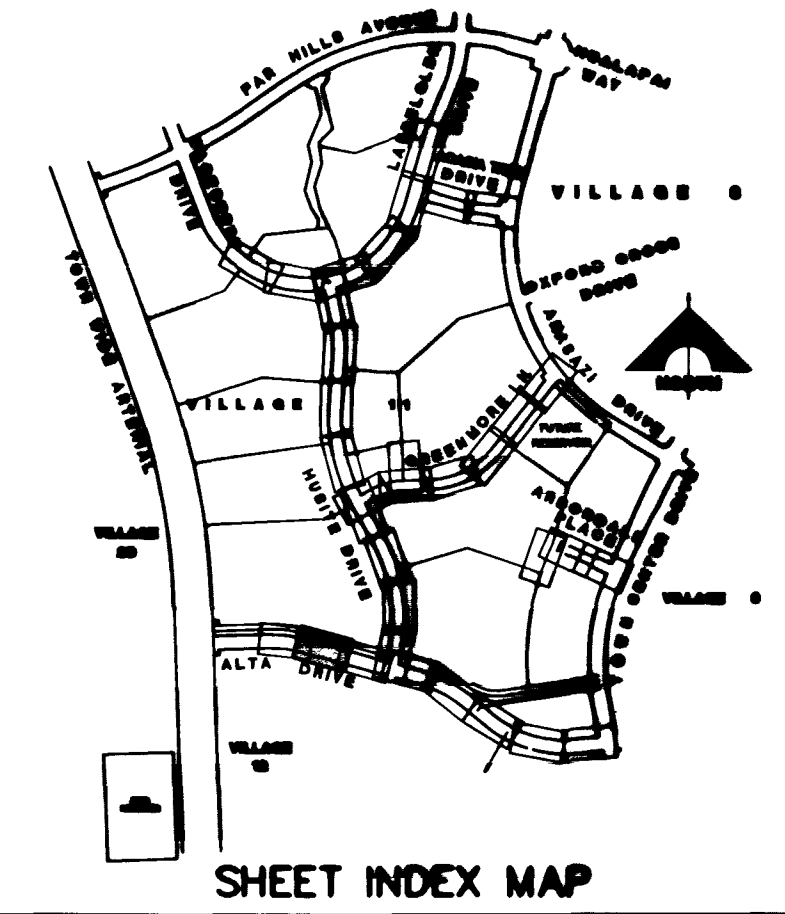
- WATER**
- INSTALL WATER PIPES PER SUMMERLIN STD. U-20
  - INSTALL 12" DIA. GATE VALVE & BOX (U-34)
  - INSTALL 8" DIA. GATE VALVE & BOX (U-34)
  - INSTALL 12"x12"x12" TEE
  - INSTALL 12"x12"x12"x12" CROSS
  - INSTALL 12"x12" ELBOW
  - INSTALL 12"x12"x8" TEE
  - INSTALL 12"x12"x8"x8" CROSS
  - INSTALL 2" TEMP. BLOW-OFF & CAP (U-32)
  - INSTALL FIRE HYDRANT ASSEMBLY COMPLETE PER (U-33)
  - IRRIGATION SLEEVE (U-18)
  - EXISTING GATE VALVE MUST BE IN CLOSED POSITION PRIOR TO REMOVAL OF CAP

- STORM DRAIN**
- INSTALL STORM DRAIN PIPES PER SUMMERLIN STD. U-20
  - INSTALL STORM DRAIN MANHOLE (D-10)
  - INSTALL 4" TYPE "A" DROP INLET (D-12)
  - INSTALL TYPE "B" DROP INLET (D-13)
  - INSTALL TYPE "C" MODIFIED DROP INLET (D-14)
  - INSTALL 6" TYPE "A" DROP INLET (D-12)

- SEWER**
- INSTALL SEWER PIPES PER SUMMERLIN STD. U-20
  - INSTALL SEWER MANHOLE (SD1-B CLV)

- STREET LIGHTING**
- INSTALL STREET LIGHT, SEE ELECTRICAL PLANS (E-2)
  - STREET LIGHT OR COMMON TRENCH, SEE ELECTRICAL PLANS

- TRAFFIC**
- INSTALL 2-3" CONDUIT
  - INSTALL NO. 5 PULLBOX (E-32)



APPROVAL: 1ST 11-4 5-31-96

DATE: 1-17-97

LAS VEGAS VALLEY WATER DISTRICT

**FINAL SUBMITTAL**

RECOMMENDED BY: CHRISTOPHER M. ANDERSON

DATE: 1/17/97

PROJECT: SUMMERLIN VILLAGE 11/12 THE ARBORS - UNIT 2A

ALTA DRIVE PLAN & PROFILE STA 510+00 TO 514+00

SHEET 11

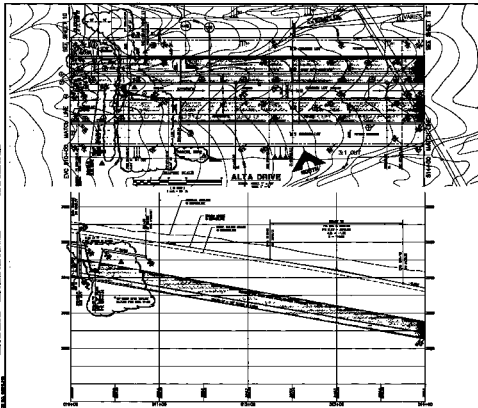
SHT 11 OF 64

G. C. WALLACE, INC. Engineering/Architecture

9176

11-32-135

107Y-4463-2A



**DATE:** 10/10/72 **BY:** JAC

NO.	DATE	REVISION
1		
2		
3		
4		
5		
6		
7		
8		
9		
10		

**PROJECT:** 107V-4483-2A

**DESCRIPTION:** [Detailed description of the project work]

**REVISIONS:**

1. [Revision description]
2. [Revision description]
3. [Revision description]
4. [Revision description]
5. [Revision description]
6. [Revision description]
7. [Revision description]
8. [Revision description]
9. [Revision description]
10. [Revision description]

**APPROVED:** [Signature]

**DATE:** 10/10/72

**SCALE:** 1" = 100'

**PROJECT:** 107V-4483-2A

**DATE:** 10/10/72

**BY:** JAC