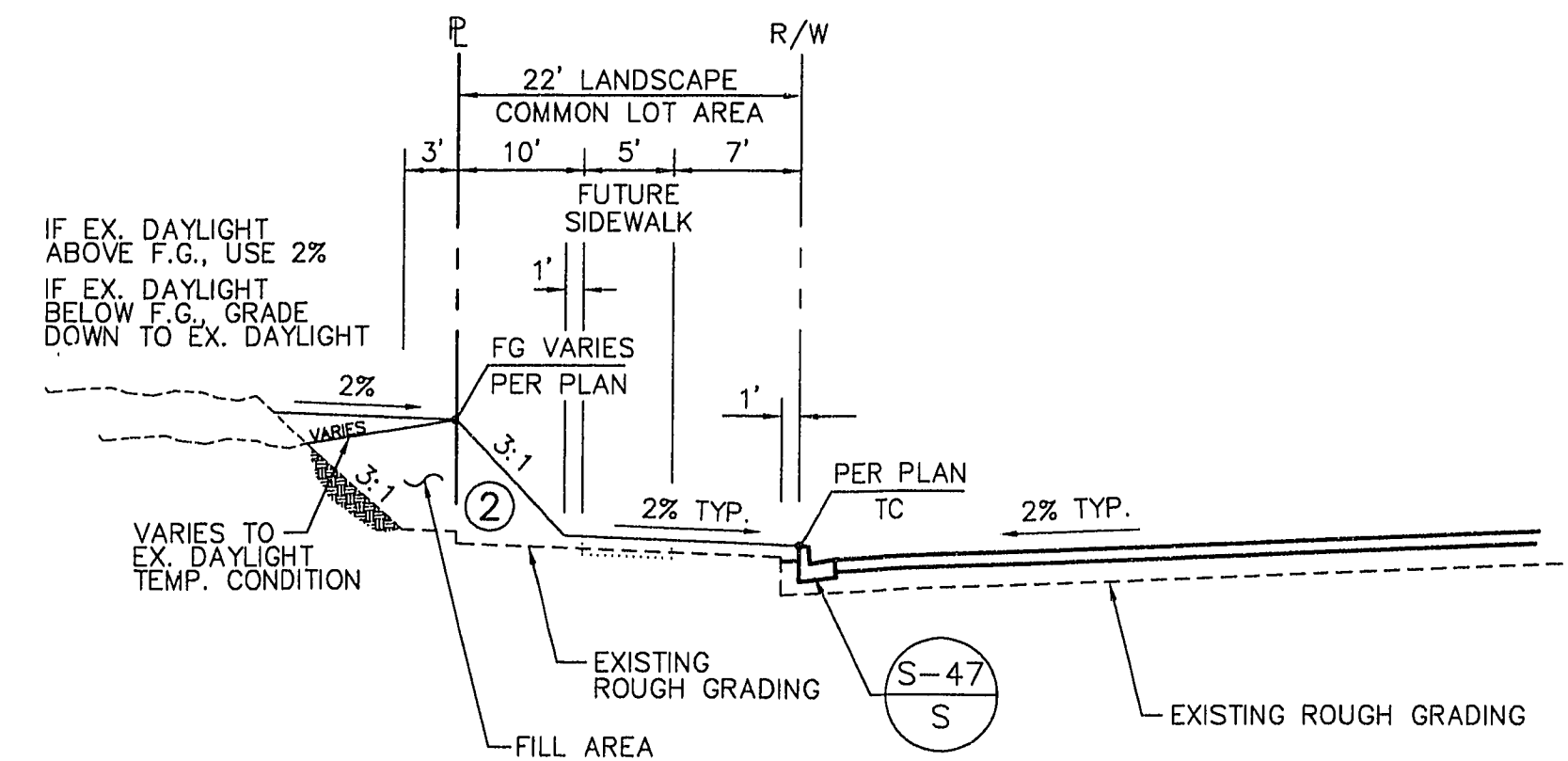
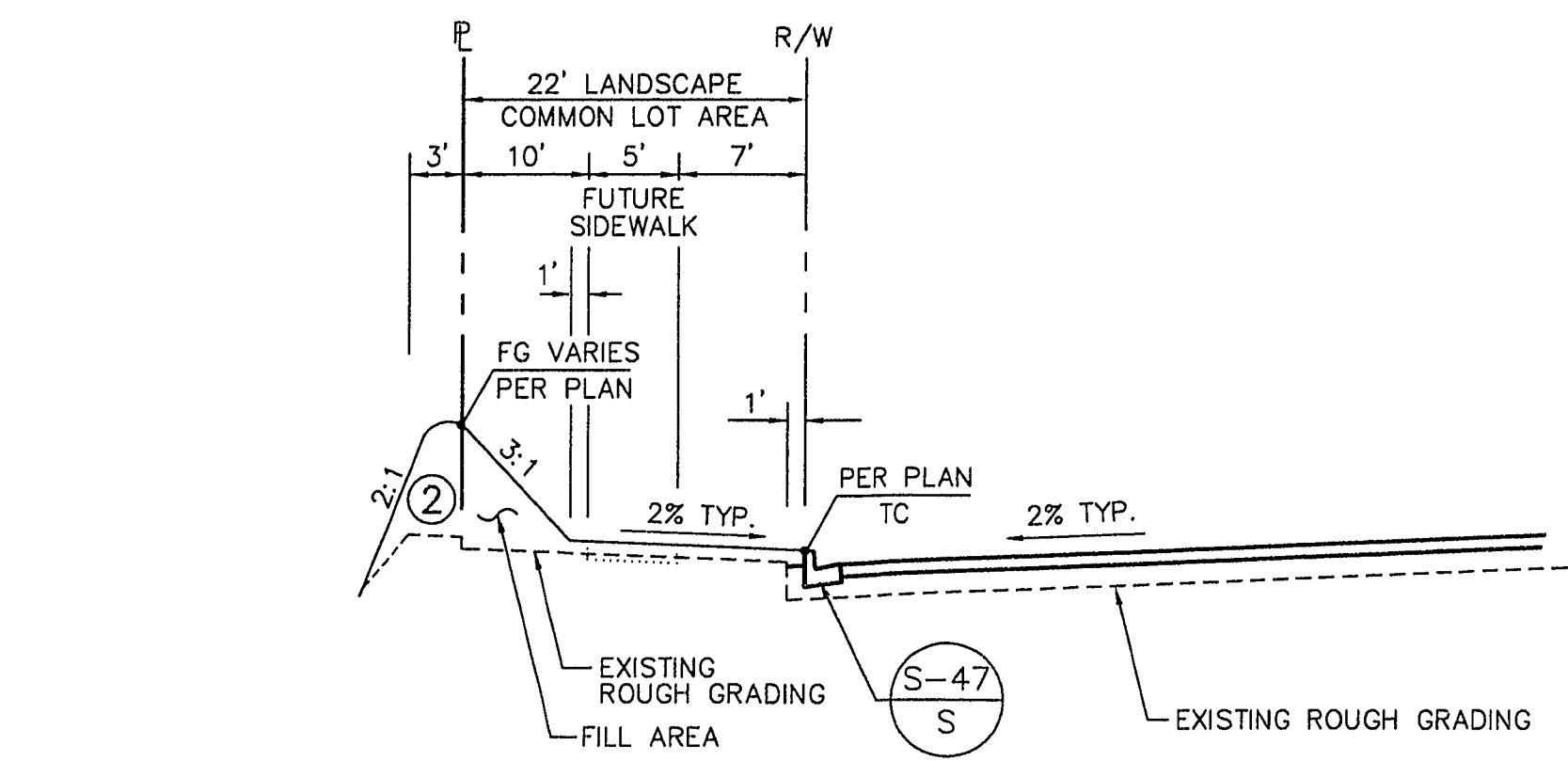
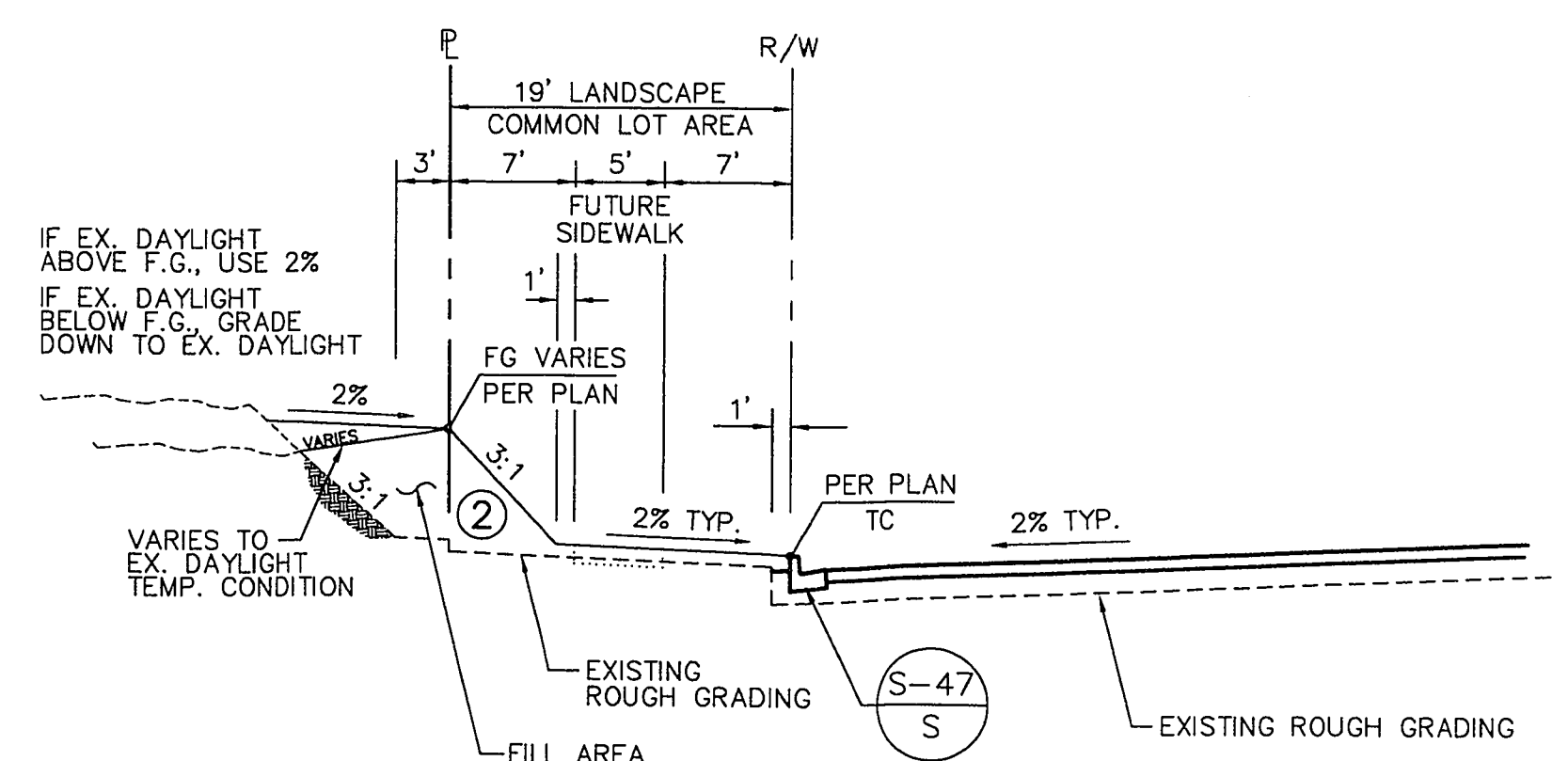
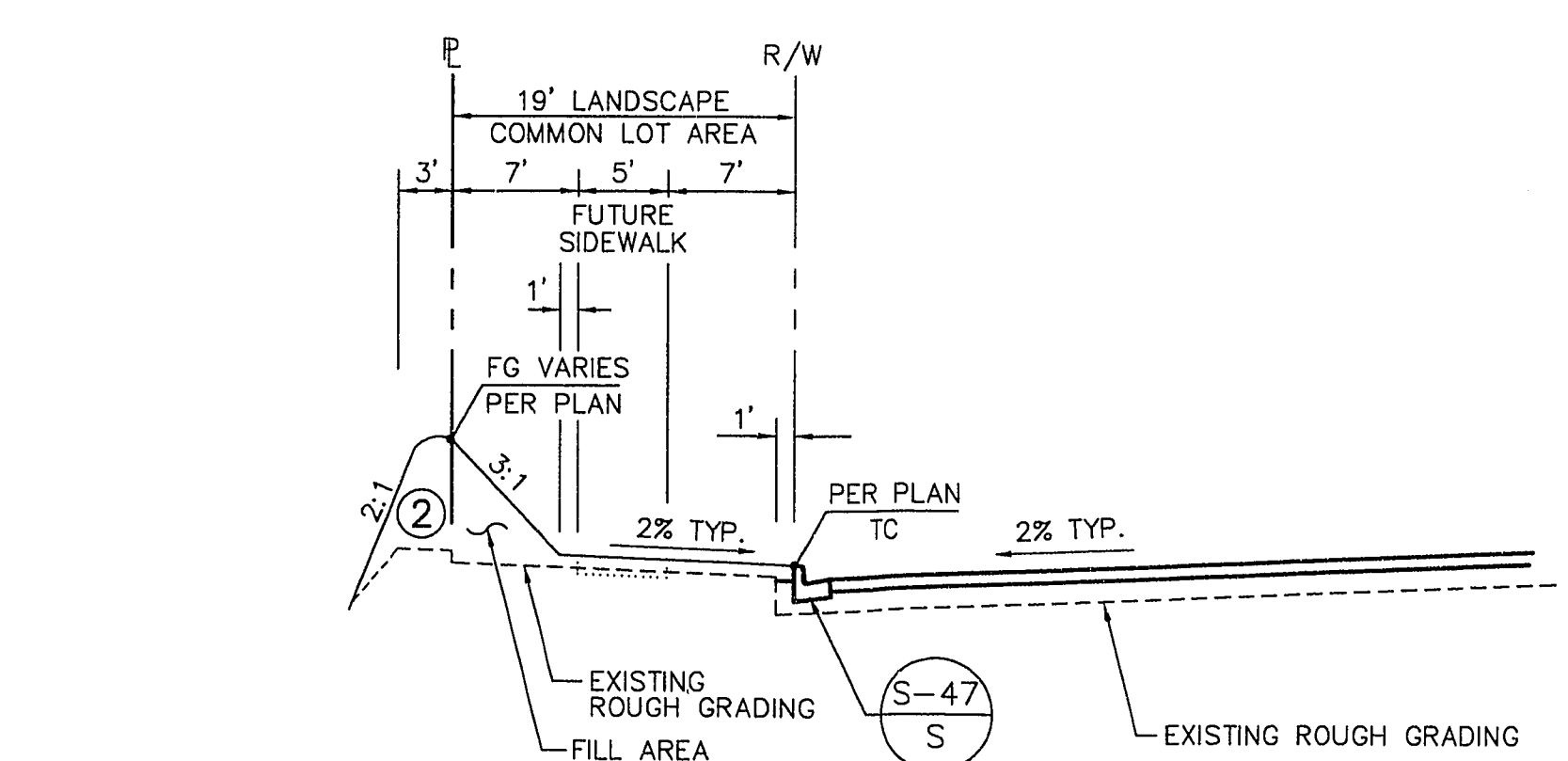


JOB NO. 62011212  
 May 28, 1996 11:20:42 a.m.  
 Drawing: C:\DWG\11-12\2A-1100X\112A-156.DWG



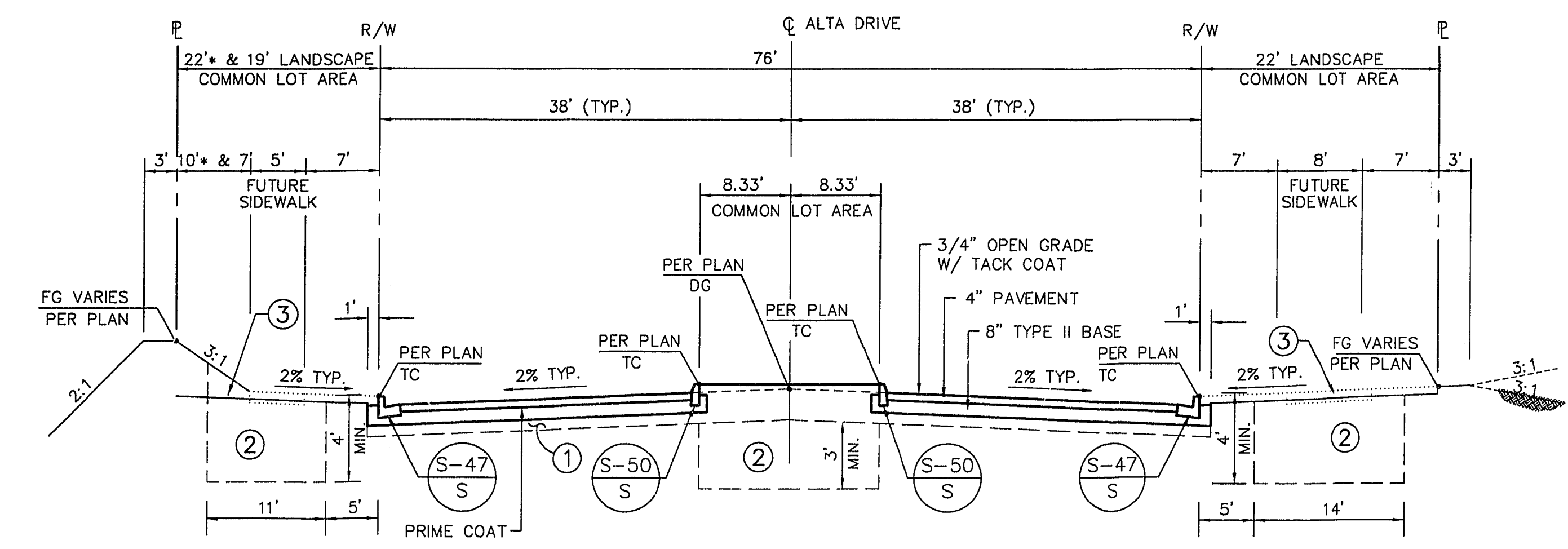
**ALTA DRIVE LANDSCAPE - SECTION E**  
NOT TO SCALE

- NOTES**
- SCARIFY NATIVE 6" AND RECOMPACT TO 95%.
  - LANDSCAPE AREA: EXCAVATED AND RECOMPACT TO 85% OR RIP ENTIRE AREA TO DEPTH INDICATED.
  - ROUGH GRADE (R.G.) TO BE 4" BELOW FINISH GRADE (F.G.) FOR FUTURE LANDSCAPE PURPOSES.



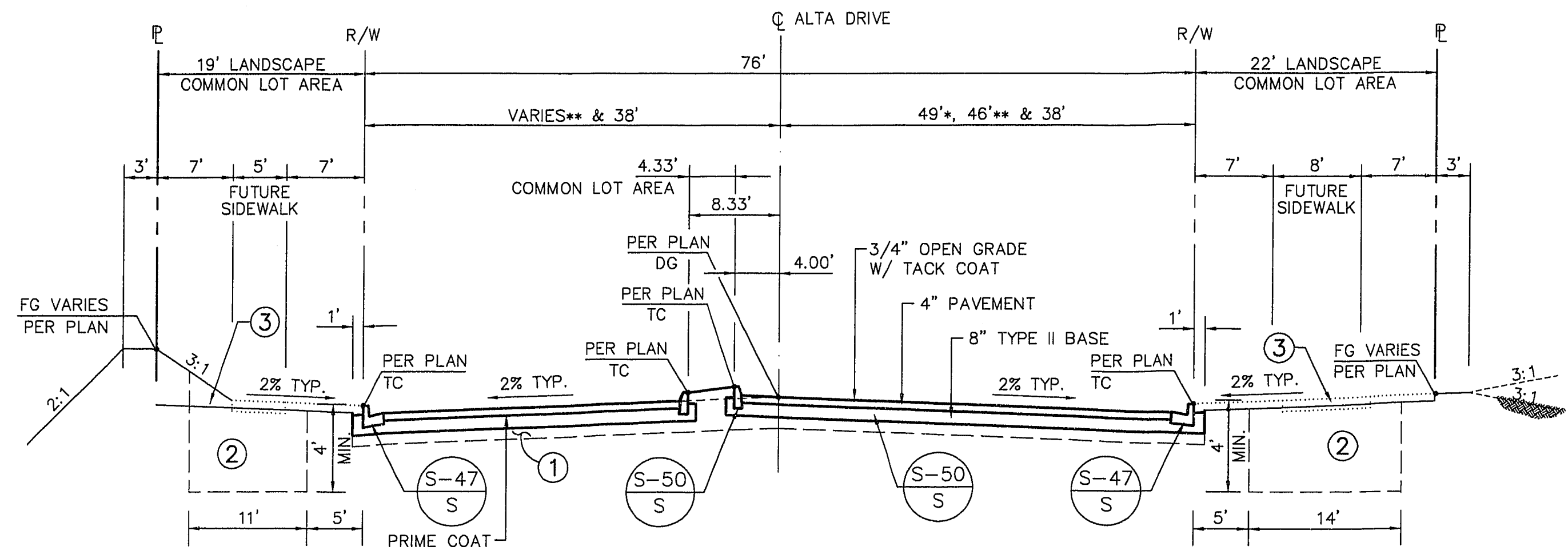
**ALTA DRIVE LANDSCAPE - SECTION D**  
NOT TO SCALE

- NOTES**
- SCARIFY NATIVE 6" AND RECOMPACT TO 95%.
  - LANDSCAPE AREA: EXCAVATED AND RECOMPACT TO 85% OR RIP ENTIRE AREA TO DEPTH INDICATED.
  - ROUGH GRADE (R.G.) TO BE 4" BELOW FINISH GRADE (F.G.) FOR FUTURE LANDSCAPE PURPOSES.



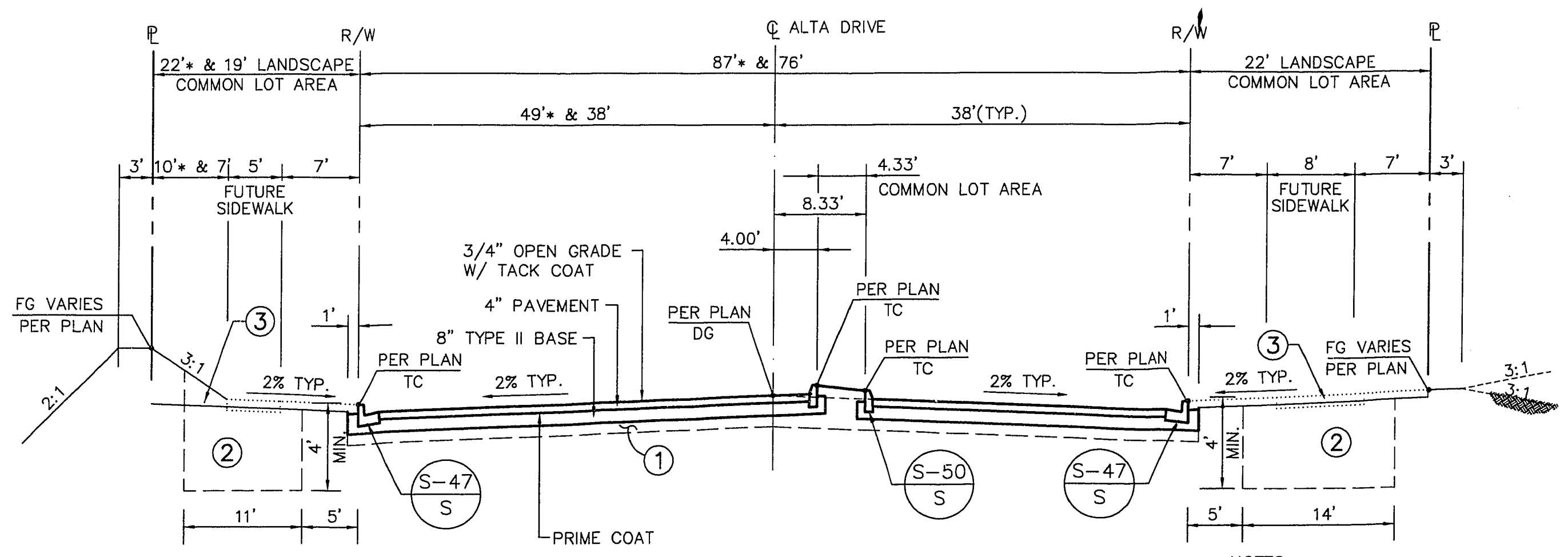
STA 506+50.00 TO 506+26.13 \* STA 522+40.06 TO 527+73.31  
 STA 511+08.40 TO 514+79.80  
 STA 522+40.06 TO 530+17.03  
**ALTA DRIVE - SECTION C**  
 SCALE: HORIZ. 1"=10'  
 VERT. 1"=5'

- NOTES**
- SCARIFY NATIVE 6" AND RECOMPACT TO 95%.
  - LANDSCAPE AREA: EXCAVATED AND RECOMPACT TO 85% OR RIP ENTIRE AREA TO DEPTH INDICATED.
  - ROUGH GRADE (R.G.) TO BE 4" BELOW FINISH GRADE (F.G.) FOR FUTURE LANDSCAPE PURPOSES.



STA 508+52.64 TO 510+02.10 \* STA 515+94.16 TO 517+72.00  
 STA 516+00.81 TO 517+72.00 \*\*STA 537+93.86 TO 539+70.13  
 STA 531+42.41 TO 532+92.96  
**ALTA DRIVE - SECTION B**  
 SCALE: HORIZ. 1"=10'  
 VERT. 1"=5'

- NOTES**
- SCARIFY NATIVE 6" AND RECOMPACT TO 95%.
  - LANDSCAPE AREA: EXCAVATED AND RECOMPACT TO 85% OR RIP ENTIRE AREA TO DEPTH INDICATED.
  - ROUGH GRADE (R.G.) TO BE 4" BELOW FINISH GRADE (F.G.) FOR FUTURE LANDSCAPE PURPOSES.



STA 519+26.02 TO 521+08.83  
 STA 533+93.33 TO 535+42.79  
**ALTA DRIVE - SECTION A**  
 SCALE: HORIZ. 1"=10'  
 VERT. 1"=5'

- NOTES**
- SCARIFY NATIVE 6" AND RECOMPACT TO 95%.
  - LANDSCAPE AREA: EXCAVATED AND RECOMPACT TO 85% OR RIP ENTIRE AREA TO DEPTH INDICATED.
  - ROUGH GRADE (R.G.) TO BE 4" BELOW FINISH GRADE (F.G.) FOR FUTURE LANDSCAPE PURPOSES.

**FINAL SUBMITTAL**  
 RECOMMENDED ENGINEER  
 CHRISTOPHER W. ANDERSON  
 STATE OF NEVADA  
 PROFESSIONAL ENGINEER  
 5071  
 REF. NO. DATE REV. DATE  
 G.C. WALLACE, INC.  
 Engineering/Architecture  
 1955 SOUTH RAINBOW BLVD./LAS VEGAS, NEVADA 89102  
**VILLAGE 11/12 THE ARBORS - UNIT 2A**  
**ALTA DRIVE**  
**TYPICAL SECTIONS**  
 SHEET  
**56**  
 SHT 56 OF 64

11-32-180 107Y-4463-2A