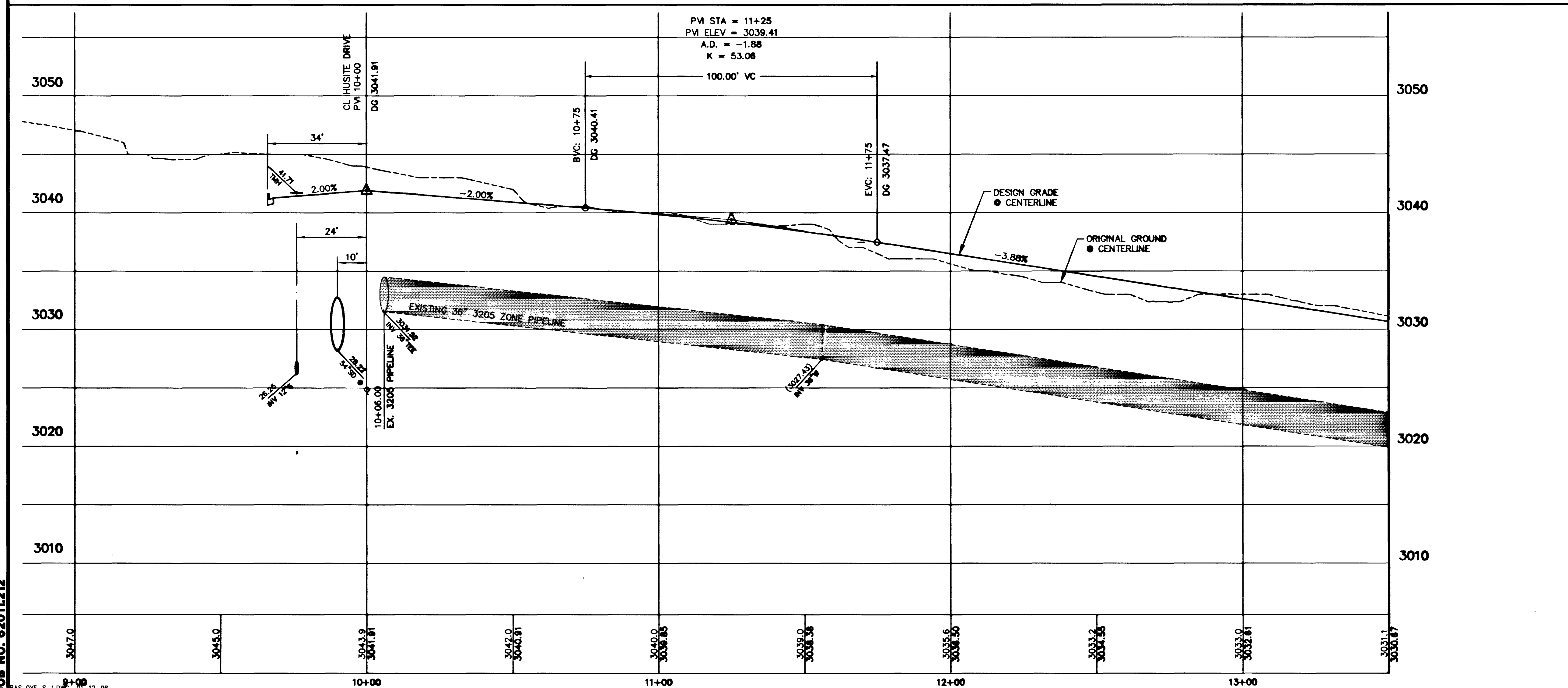
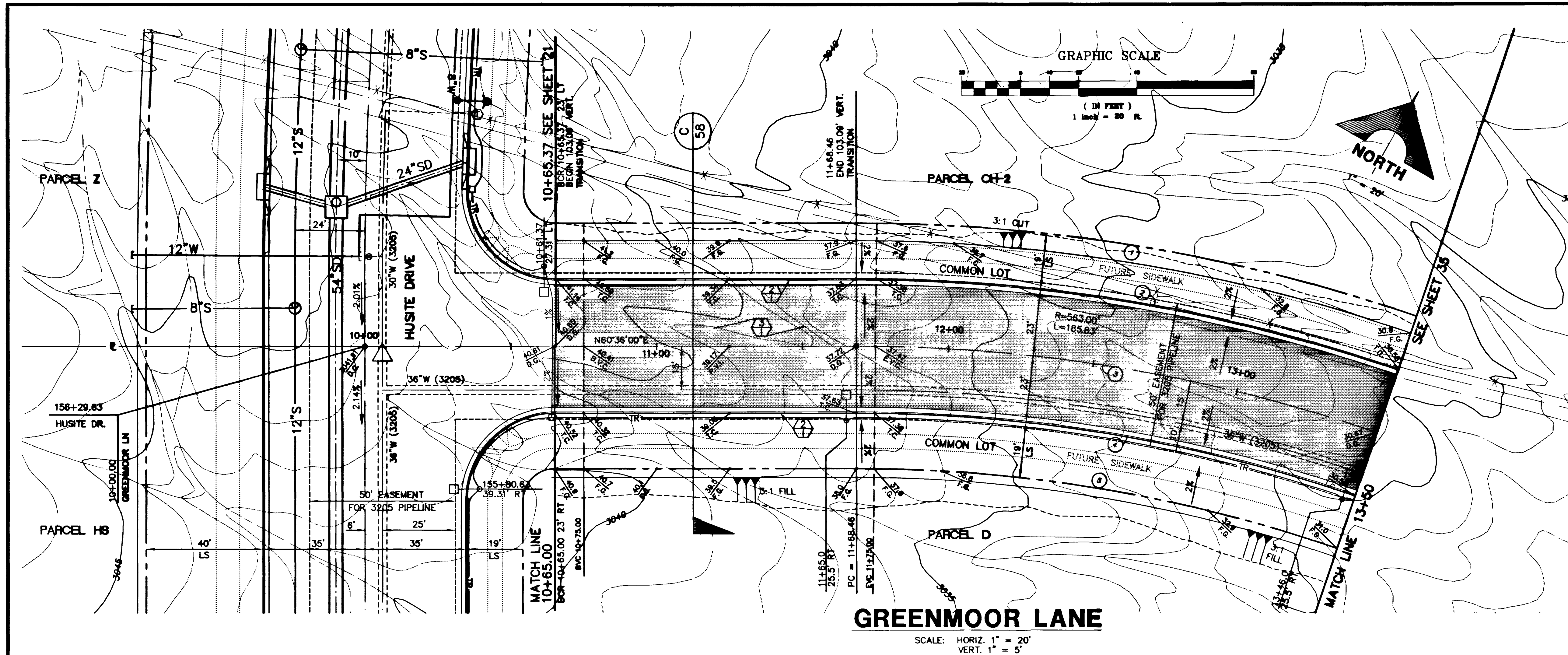


Xrefs: OK-TOPO.DWG OKF-S-M.S.DWG

Drawing: C:\DWG\11-12\UNIT-2A\OKF-S-1.DWG

May 29, 1996 11:04:56 a.m.

JOB NO. 62011.212



CURVE DATA ① INDICATES CURVE NUMBER (THIS SHEET ONLY)

CURVE	DELTA	RADIUS	LENGTH	TANGENT
1	185.41°	292.00'	185.41'	98.94'
2	185.41°	574.00'	185.41'	98.94'
3	185.41°	550.00'	181.34'	91.80'
4	185.41°	527.00'	173.84'	87.77'
5	185.41°	508.00'	167.87'	84.81'

CONSTRUCTION NOTES

- IMPROVEMENTS**
- INSTALL "A" TYPE CURB (S-50)
 - INSTALL "L" TYPE CURB & GUTTER (S-47)
 - INSTALL AC PAVEMENT PER SECTION SHEETS 56, 57, & 58
 - INSTALL CROSSWALK (S-78)
 - INSTALL DEPRESSED CURB (S-75)

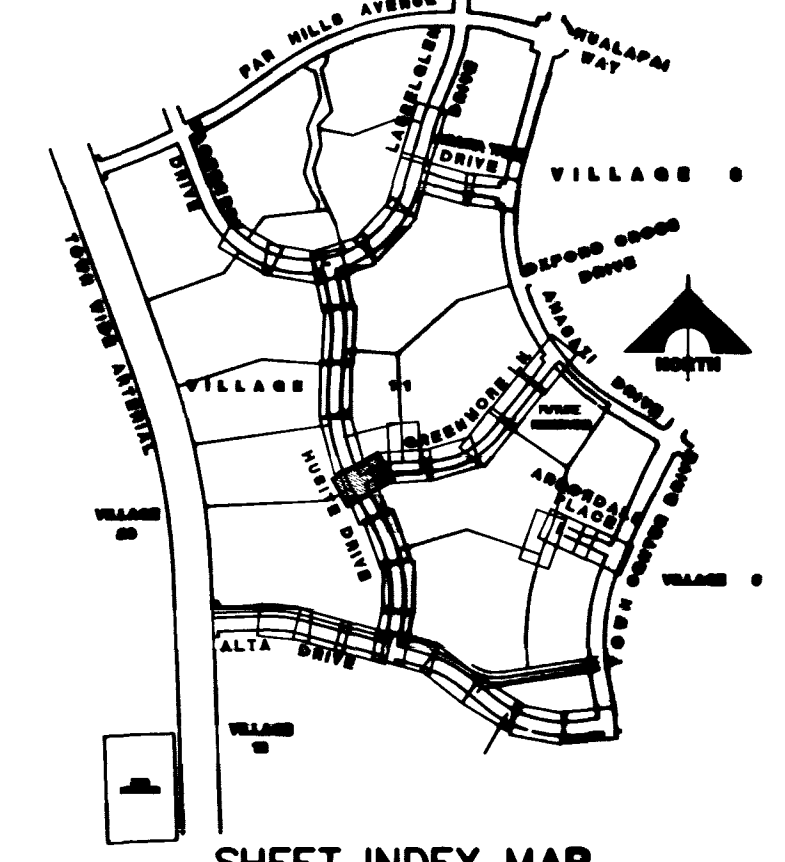
- WATER**
- INSTALL WATER PIPES PER SUMMERLIN STD. U-20
 - INSTALL 12" DIA. GATE VALVE & BOX (U-34)
 - INSTALL 8" DIA. GATE VALVE & BOX (U-34)
 - INSTALL 12"x12"x12" TEE
 - INSTALL 12"x12"x12" CROSS
 - INSTALL 12"x12" ELBOW
 - INSTALL 12"x12"x8" TEE
 - INSTALL 12"x12"x8" CROSS
 - INSTALL 2" TEMP. BLOW-OFF & CAP (U-32)
 - INSTALL FIRE HYDRANT ASSEMBLY COMPLETE PER (U-33)
 - IRRIGATION SLEEVE (U-18)
 - EXISTING GATE VALVE MUST BE IN CLOSED POSITION PRIOR TO REMOVAL OF CAP

- STORM DRAIN**
- INSTALL STORM DRAIN PIPES PER SUMMERLIN STD. U-20
 - INSTALL STORM DRAIN MANHOLE (D-10)
 - INSTALL 4" TYPE "A" DROP INLET (D-12)
 - INSTALL TYPE "B" DROP INLET (D-13)
 - INSTALL TYPE "C" MODIFIED DROP INLET (D-14)
 - (SEE PLANS FOR LENGTH)
 - INSTALL 6" TYPE "A" DROP INLET (D-12)

- SEWER**
- INSTALL SEWER PIPES PER SUMMERLIN STD. U-20
 - INSTALL SEWER MANHOLE (SD1-B CLV)

- STREET LIGHTING**
- INSTALL STREET LIGHT, SEE ELECTRICAL PLANS (E-2)
 - STREET LIGHT OR COMMON TRENCH, SEE ELECTRICAL PLANS

- TRAFFIC**
- INSTALL 2-3" CONDUIT
 - INSTALL NO. 5 PULLBOX (E-32)



APPROVAL: *[Signature]* 5/31/96
LAS VEGAS VALLEY WATER DISTRICT DATE

FINAL SUBMITTAL

RECOMMENDED BY: CHRISTOPHER W. ANDERSON
DATE: 5/31/96

G.C. WALLACE, INC.
Engineering/Architecture
1885 SOUTH RAINBOW AVENUE, SUITE 100, LAS VEGAS, NEVADA 89102

SUMMERLIN
VILLAGE 11/12 THE ARBORS - UNIT 2A
GREENMOOR LANE
PLAN & PROFILE
STA 10+00 TO 13+80

SHEET 34 OF 84

8496 11-32-157 107Y-4463-2A

