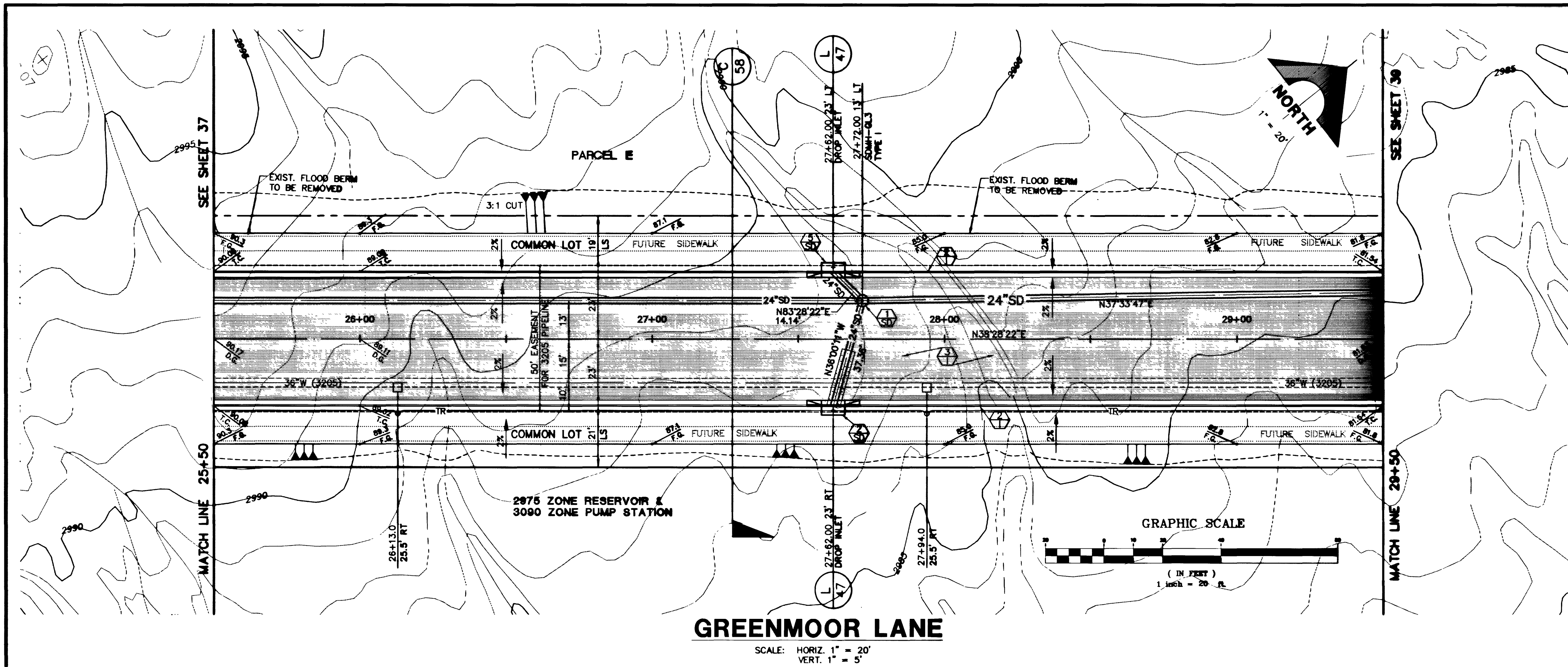


Xrefs: OK-TOPOLDWG ORF-S-45.DWG

Drawing: C:\DWG\ML11-2\UNIT-2A\ORF-S-5.DWG

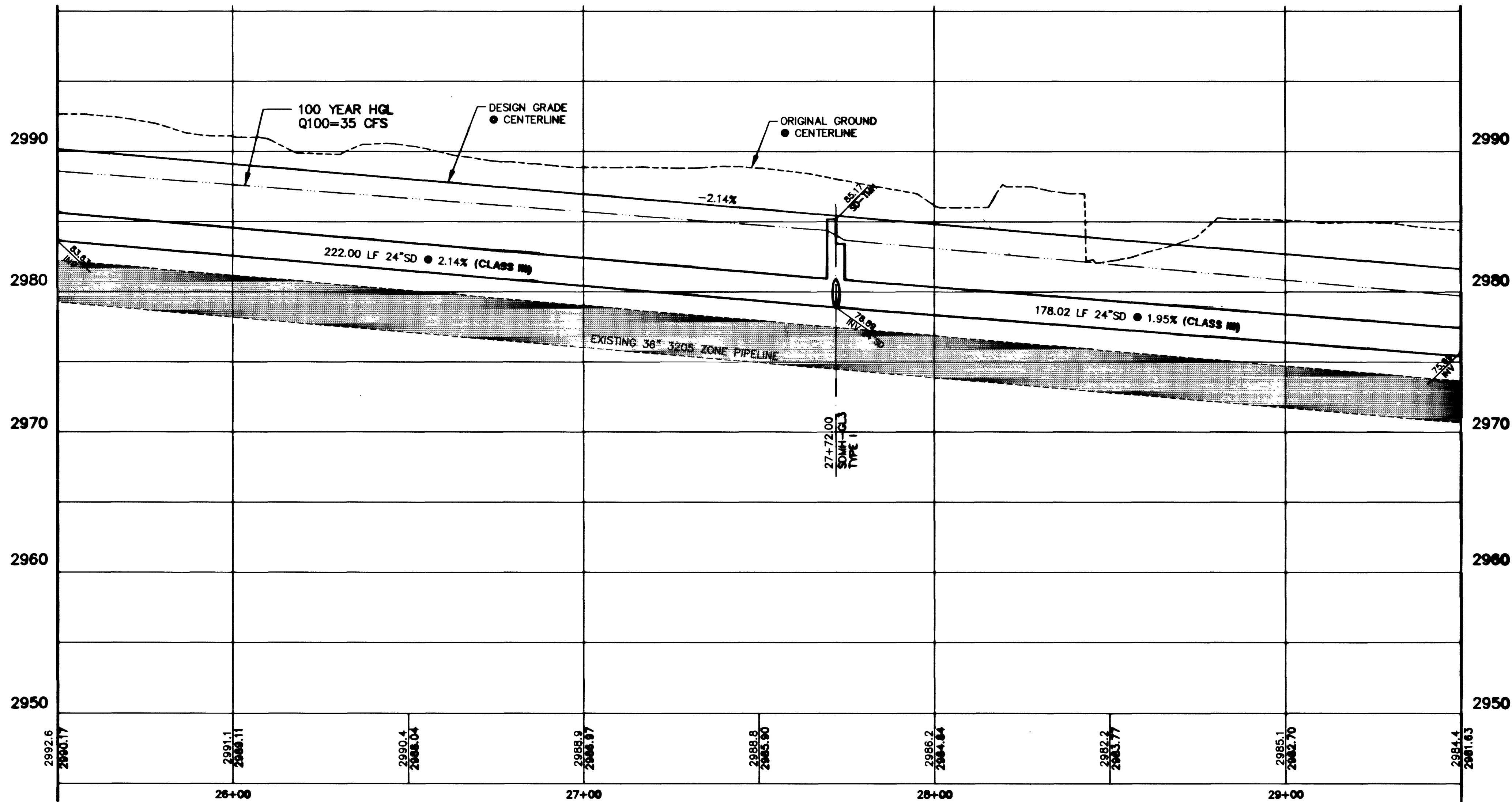
May 29, 1996 11:59:13 a.m.

JOB NO. 62011.212



### GREENMOOR LANE

SCALE: HORIZ. 1" = 20'  
VERT. 1" = 5'



#### CONSTRUCTION NOTES

##### IMPROVEMENTS

- INSTALL "A" TYPE CURB (S-50)
- INSTALL "L" TYPE CURB & GUTTER (S-47)
- INSTALL AC PAVEMENT PER SECTION SHEETS 56, 57, & 58
- INSTALL CROSSWALK (S-78)
- INSTALL DEPRESSED CURB (S-79)

##### WATER

- INSTALL WATER PIPES PER SUMMERLIN STD. U-20
- INSTALL 12" DIA. GATE VALVE & BOX (U-34)
- INSTALL 8" DIA. GATE VALVE & BOX (U-34)
- INSTALL 12"x12"x12" TEE (U-34)
- INSTALL 12"x12"x12" CROSS (U-34)
- INSTALL 12"x12" ELBOW (U-34)
- INSTALL 12"x12"x8" TEE (U-34)
- INSTALL 12"x12"x8" CROSS (U-32)
- INSTALL 2" TEMP. BLOW-OFF & CAP (U-32)
- INSTALL FIRE HYDRANT ASSEMBLY COMPLETE PER (U-33)
- IRRIGATION SLEEVE (U-18)
- EXISTING GATE VALVE MUST BE IN CLOSED POSITION PRIOR TO REMOVAL OF CAP

##### STORM DRAIN

- INSTALL STORM DRAIN PIPES PER SUMMERLIN STD. U-20
- INSTALL STORM DRAIN MANHOLE (D1-D16)
- INSTALL 4" TYPE "A" DROP INLET (D-12)
- INSTALL TYPE "B" DROP INLET (D-13)
- INSTALL TYPE "C" MODIFIED DROP INLET (SEE PLANS FOR LENGTH) (D-14)
- INSTALL 6" TYPE "A" DROP INLET (D-12)

##### SEWER

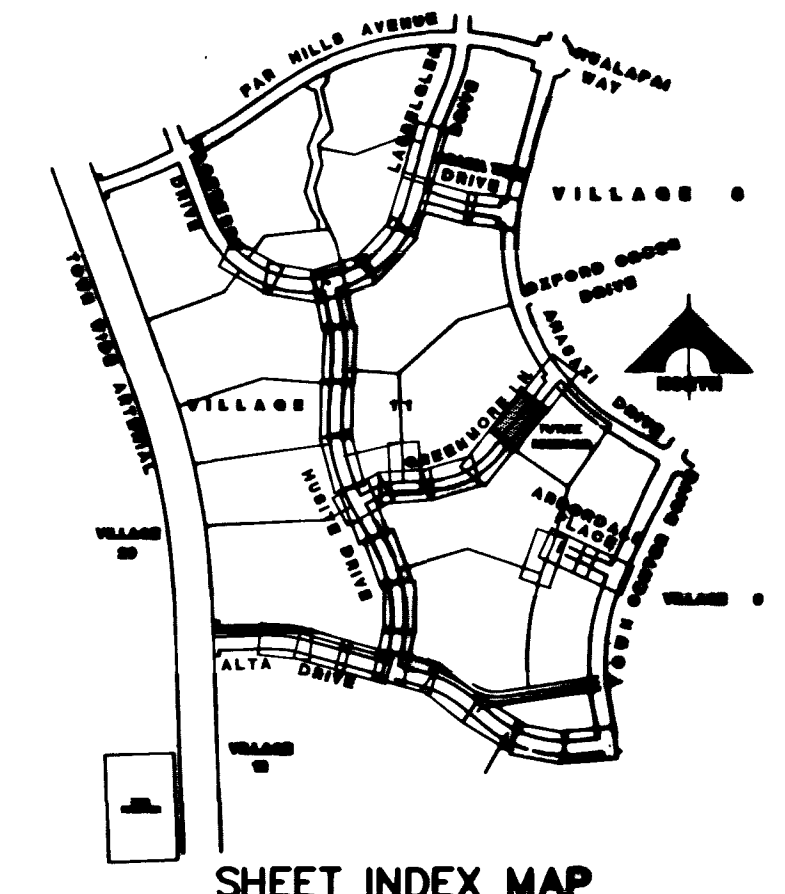
- INSTALL SEWER PIPES PER SUMMERLIN STD. U-20
- INSTALL SEWER MANHOLE (SD1-B CLV)

##### STREET LIGHTING

- INSTALL STREET LIGHT, SEE ELECTRICAL PLANS (E-2)
- STREET LIGHT OR COMMON TRENCH, SEE ELECTRICAL PLANS

##### TRAFFIC

- INSTALL 2-3" CONDUIT (E-32)
- INSTALL NO. 5 PULLBOX (E-32)

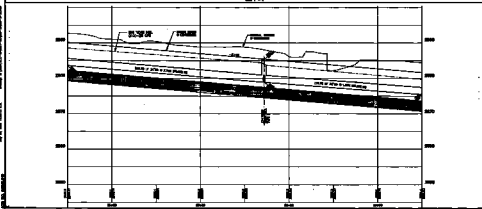
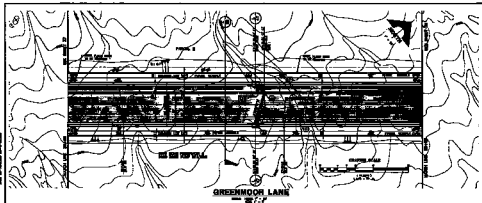


SHEET INDEX MAP

APPROVAL:

*[Signature]* 5/31/96  
 LAS VEGAS VALLEY WATER DISTRICT DATE

**FINAL SUBMITTAL**  
 REVISIONS  
 NO. DATE DESCRIPTION  
 1 5/31/96  
 2 5/31/96  
 3 5/31/96  
 4 5/31/96  
 5 5/31/96  
 6 5/31/96  
 7 5/31/96  
 8 5/31/96  
 9 5/31/96  
 10 5/31/96  
 11 5/31/96  
 12 5/31/96  
 13 5/31/96  
 14 5/31/96  
 15 5/31/96  
 16 5/31/96  
 17 5/31/96  
 18 5/31/96  
 19 5/31/96  
 20 5/31/96  
 21 5/31/96  
 22 5/31/96  
 23 5/31/96  
 24 5/31/96  
 25 5/31/96  
 26 5/31/96  
 27 5/31/96  
 28 5/31/96  
 29 5/31/96  
 30 5/31/96  
 31 5/31/96  
 32 5/31/96  
 33 5/31/96  
 34 5/31/96  
 35 5/31/96  
 36 5/31/96  
 37 5/31/96  
 38 5/31/96  
 39 5/31/96  
 40 5/31/96  
 41 5/31/96  
 42 5/31/96  
 43 5/31/96  
 44 5/31/96  
 45 5/31/96  
 46 5/31/96  
 47 5/31/96  
 48 5/31/96  
 49 5/31/96  
 50 5/31/96  
 51 5/31/96  
 52 5/31/96  
 53 5/31/96  
 54 5/31/96  
 55 5/31/96  
 56 5/31/96  
 57 5/31/96  
 58 5/31/96  
 59 5/31/96  
 60 5/31/96  
 61 5/31/96  
 62 5/31/96  
 63 5/31/96  
 64 5/31/96  
 65 5/31/96  
 66 5/31/96  
 67 5/31/96  
 68 5/31/96  
 69 5/31/96  
 70 5/31/96  
 71 5/31/96  
 72 5/31/96  
 73 5/31/96  
 74 5/31/96  
 75 5/31/96  
 76 5/31/96  
 77 5/31/96  
 78 5/31/96  
 79 5/31/96  
 80 5/31/96  
 81 5/31/96  
 82 5/31/96  
 83 5/31/96  
 84 5/31/96  
 85 5/31/96  
 86 5/31/96  
 87 5/31/96  
 88 5/31/96  
 89 5/31/96  
 90 5/31/96  
 91 5/31/96  
 92 5/31/96  
 93 5/31/96  
 94 5/31/96  
 95 5/31/96  
 96 5/31/96  
 97 5/31/96  
 98 5/31/96  
 99 5/31/96  
 100 5/31/96  
 101 5/31/96  
 102 5/31/96  
 103 5/31/96  
 104 5/31/96  
 105 5/31/96  
 106 5/31/96  
 107 5/31/96  
 108 5/31/96  
 109 5/31/96  
 110 5/31/96  
 111 5/31/96  
 112 5/31/96  
 113 5/31/96  
 114 5/31/96  
 115 5/31/96  
 116 5/31/96  
 117 5/31/96  
 118 5/31/96  
 119 5/31/96  
 120 5/31/96  
 121 5/31/96  
 122 5/31/96  
 123 5/31/96  
 124 5/31/96  
 125 5/31/96  
 126 5/31/96  
 127 5/31/96  
 128 5/31/96  
 129 5/31/96  
 130 5/31/96  
 131 5/31/96  
 132 5/31/96  
 133 5/31/96  
 134 5/31/96  
 135 5/31/96  
 136 5/31/96  
 137 5/31/96  
 138 5/31/96  
 139 5/31/96  
 140 5/31/96  
 141 5/31/96  
 142 5/31/96  
 143 5/31/96  
 144 5/31/96  
 145 5/31/96  
 146 5/31/96  
 147 5/31/96  
 148 5/31/96  
 149 5/31/96  
 150 5/31/96  
 151 5/31/96  
 152 5/31/96  
 153 5/31/96  
 154 5/31/96  
 155 5/31/96  
 156 5/31/96  
 157 5/31/96  
 158 5/31/96  
 159 5/31/96  
 160 5/31/96  
 161 5/31/96  
 162 5/31/96  
 163 5/31/96  
 164 5/31/96  
 165 5/31/96  
 166 5/31/96  
 167 5/31/96  
 168 5/31/96  
 169 5/31/96  
 170 5/31/96  
 171 5/31/96  
 172 5/31/96  
 173 5/31/96  
 174 5/31/96  
 175 5/31/96  
 176 5/31/96  
 177 5/31/96  
 178 5/31/96  
 179 5/31/96  
 180 5/31/96  
 181 5/31/96  
 182 5/31/96  
 183 5/31/96  
 184 5/31/96  
 185 5/31/96  
 186 5/31/96  
 187 5/31/96  
 188 5/31/96  
 189 5/31/96  
 190 5/31/96  
 191 5/31/96  
 192 5/31/96  
 193 5/31/96  
 194 5/31/96  
 195 5/31/96  
 196 5/31/96  
 197 5/31/96  
 198 5/31/96  
 199 5/31/96  
 200 5/31/96  
 201 5/31/96  
 202 5/31/96  
 203 5/31/96  
 204 5/31/96  
 205 5/31/96  
 206 5/31/96  
 207 5/31/96  
 208 5/31/96  
 209 5/31/96  
 210 5/31/96  
 211 5/31/96  
 212 5/31/96  
 213 5/31/96  
 214 5/31/96  
 215 5/31/96  
 216 5/31/96  
 217 5/31/96  
 218 5/31/96  
 219 5/31/96  
 220 5/31/96  
 221 5/31/96  
 222 5/31/96  
 223 5/31/96  
 224 5/31/96  
 225 5/31/96  
 226 5/31/96  
 227 5/31/96  
 228 5/31/96  
 229 5/31/96  
 230 5/31/96  
 231 5/31/96  
 232 5/31/96  
 233 5/31/96  
 234 5/31/96  
 235 5/31/96  
 236 5/31/96  
 237 5/31/96  
 238 5/31/96  
 239 5/31/96  
 240 5/31/96  
 241 5/31/96  
 242 5/31/96  
 243 5/31/96  
 244 5/31/96  
 245 5/31/96  
 246 5/31/96  
 247 5/31/96  
 248 5/31/96  
 249 5/31/96  
 250 5/31/96  
 251 5/31/96  
 252 5/31/96  
 253 5/31/96  
 254 5/31/96  
 255 5/31/96  
 256 5/31/96  
 257 5/31/96  
 258 5/31/96  
 259 5/31/96  
 260 5/31/96  
 261 5/31/96  
 262 5/31/96  
 263 5/31/96  
 264 5/31/96  
 265 5/31/96  
 266 5/31/96  
 267 5/31/96  
 268 5/31/96  
 269 5/31/96  
 270 5/31/96  
 271 5/31/96  
 272 5/31/96  
 273 5/31/96  
 274 5/31/96  
 275 5/31/96  
 276 5/31/96  
 277 5/31/96  
 278 5/31/96  
 279 5/31/96  
 280 5/31/96  
 281 5/31/96  
 282 5/31/96  
 283 5/31/96  
 284 5/31/96  
 285 5/31/96  
 286 5/31/96  
 287 5/31/96  
 288 5/31/96  
 289 5/31/96  
 290 5/31/96  
 291 5/31/96  
 292 5/31/96  
 293 5/31/96  
 294 5/31/96  
 295 5/31/96  
 296 5/31/96  
 297 5/31/96  
 298 5/31/96  
 299 5/31/96  
 300 5/31/96  
 301 5/31/96  
 302 5/31/96  
 303 5/31/96  
 304 5/31/96  
 305 5/31/96  
 306 5/31/96  
 307 5/31/96  
 308 5/31/96  
 309 5/31/96  
 310 5/31/96  
 311 5/31/96  
 312 5/31/96  
 313 5/31/96  
 314 5/31/96  
 315 5/31/96  
 316 5/31/96  
 317 5/31/96  
 318 5/31/96  
 319 5/31/96  
 320 5/31/96  
 321 5/31/96  
 322 5/31/96  
 323 5/31/96  
 324 5/31/96  
 325 5/31/96  
 326 5/31/96  
 327 5/31/96  
 328 5/31/96  
 329 5/31/96  
 330 5/31/96  
 331 5/31/96  
 332 5/31/96  
 333 5/31/96  
 334 5/31/96  
 335 5/31/96  
 336 5/31/96  
 337 5/31/96  
 338 5/31/96  
 339 5/31/96  
 340 5/31/96  
 341 5/31/96  
 342 5/31/96  
 343 5/31/96  
 344 5/31/96  
 345 5/31/96  
 346 5/31/96  
 347 5/31/96  
 348 5/31/96  
 349 5/31/96  
 350 5/31/96  
 351 5/31/96  
 352 5/31/96  
 353 5/31/96  
 354 5/31/96  
 355 5/31/96  
 356 5/31/96  
 357 5/31/96  
 358 5/31/96  
 359 5/31/96  
 360 5/31/96  
 361 5/31/96  
 362 5/31/96  
 363 5/31/96  
 364 5/31/96  
 365 5/31/96  
 366 5/31/96  
 367 5/31/96  
 368 5/31/96  
 369 5/31/96  
 370 5/31/96  
 371 5/31/96  
 372 5/31/96  
 373 5/31/96  
 374 5/31/96  
 375 5/31/96  
 376 5/31/96  
 377 5/31/96  
 378 5/31/96  
 379 5/31/96  
 380 5/31/96  
 381 5/31/96  
 382 5/31/96  
 383 5/31/96  
 384 5/31/96  
 385 5/31/96  
 386 5/31/96  
 387 5/31/96  
 388 5/31/96  
 389 5/31/96  
 390 5/31/96  
 391 5/31/96  
 392 5/31/96  
 393 5/31/96  
 394 5/31/96  
 395 5/31/96  
 396 5/31/96  
 397 5/31/96  
 398 5/31/96  
 399 5/31/96  
 400 5/31/96  
 401 5/31/96  
 402 5/31/96  
 403 5/31/96  
 404 5/31/96  
 405 5/31/96  
 406 5/31/96  
 407 5/31/96  
 408 5/31/96  
 409 5/31/96  
 410 5/31/96  
 411 5/31/96  
 412 5/31/96  
 413 5/31/96  
 414 5/31/96  
 415 5/31/96  
 416 5/31/96  
 417 5/31/96  
 418 5/31/96  
 419 5/31/96  
 420 5/31/96  
 421 5/31/96  
 422 5/31/96  
 423 5/31/96  
 424 5/31/96  
 425 5/31/96  
 426 5/31/96  
 427 5/31/96  
 428 5/31/96  
 429 5/31/96  
 430 5/31/96  
 431 5/31/96  
 432 5/31/96  
 433 5/31/96  
 434 5/31/96  
 435 5/31/96  
 436 5/31/96  
 437 5/31/96  
 438 5/31/96  
 439 5/31/96  
 440 5/31/96  
 441 5/31/96  
 442 5/31/96  
 443 5/31/96  
 444 5/31/96  
 445 5/31/96  
 446 5/31/96  
 447 5/31/96  
 448 5/31/96  
 449 5/31/96  
 450 5/31/96  
 451 5/31/96  
 452 5/31/96  
 453 5/31/96  
 454 5/31/96  
 455 5/31/96  
 456 5/31/96  
 457 5/31/96  
 458 5/31/96  
 459 5/31/96  
 460 5/31/96  
 461 5/31/96  
 462 5/31/96  
 463 5/31/96  
 464 5/31/96  
 465 5/31/96  
 466 5/31/96  
 467 5/31/96  
 468 5/31/96  
 469 5/31/96  
 470 5/31/96  
 471 5/31/96  
 472 5/31/96  
 473 5/31/96  
 474 5/31/96  
 475 5/31/96  
 476 5/31/96  
 477 5/31/96  
 478 5/31/96  
 479 5/31/96  
 480 5/31/96  
 481 5/31/96  
 482 5/31/96  
 483 5/31/96  
 484 5/31/96  
 485 5/31/96  
 486 5/31/96  
 487 5/31/96  
 488 5/31/96  
 489 5/31/96  
 490 5/31/96  
 491 5/31/96  
 492 5/31/96  
 493 5/31/96  
 494 5/31/96  
 495 5/31/96  
 496 5/31/96  
 497 5/31/96  
 498 5/31/96  
 499 5/31/96  
 500 5/31/96  
 501 5/31/96  
 502 5/31/96  
 503 5/31/96  
 504 5/31/96  
 505 5/31/96  
 506 5/31/96  
 507 5/31/96  
 508 5/31/96  
 509 5/31/96  
 510 5/31/96  
 511 5/31/96  
 512 5/31/96  
 513 5/31/96  
 514 5/31/96  
 515 5/31/96  
 516 5/31/96  
 517 5/31/96  
 518 5/31/96  
 519 5/31/96  
 520 5/31/96  
 521 5/31/96  
 522 5/31/96  
 523 5/31/96  
 524 5/31/96  
 525 5/31/96  
 526 5/31/96  
 527 5/31/96  
 528 5/31/96  
 529 5/31/96  
 530 5/31/96  
 531 5/31/96  
 532 5/31/96  
 533 5/31/96  
 534 5/31/96  
 535 5/31/96  
 536 5/31/96  
 537 5/31/96  
 538 5/31/96  
 539 5/31/96  
 540 5/31/96  
 541 5/31/96  
 542 5/31/96  
 543 5/31/96  
 544 5/31/96  
 545 5/31/96  
 546 5/31/96  
 547 5/31/96  
 548 5/31/96  
 549 5/31/96  
 550 5/31/96  
 551 5/31/96  
 552 5/31/96  
 553 5/31/96  
 554 5/31/96  
 555 5/31/96  
 556 5/31/96  
 557 5/31/96  
 558 5/31/96  
 559 5/31/96  
 560 5/31/96  
 561 5/31/96  
 562 5/31/96  
 563 5/31/96  
 564 5/31/96  
 565 5/31/96  
 566 5/31/96  
 567 5/31/96  
 568 5/31/96  
 569 5/31/96  
 570 5/31/96  
 571 5/31/96  
 572 5/31/96  
 573 5/31/96  
 574 5/31/96  
 575 5/31/96  
 576 5/31/96  
 577 5/31/96  
 578 5/31/96  
 579 5/31/96  
 580 5/31/96  
 581 5/31/96  
 582 5/31/96  
 583 5/31/96  
 584 5/31/96  
 585 5/31/96  
 586 5/31/96  
 587 5/31/96  
 588 5/31/96  
 589 5/31/96  
 590 5/31/96  
 591 5/31/96  
 592 5/31/96  
 593 5/31/96  
 594 5/31/96  
 595 5/31/96  
 596 5/31/96  
 597 5/31/96  
 598 5/31/96  
 599 5/31/96  
 600 5/31/96  
 601 5/31/96  
 602 5/31/96  
 603 5/31/96  
 604 5/31/96  
 605 5/31/96  
 606 5/31/96  
 607 5/31/96  
 608 5/31/96  
 609 5/31/96  
 610 5/31/96  
 611 5/31/96  
 612 5/31/96  
 613 5/31/96  
 614 5/31/96  
 615 5/31/96  
 616 5/31/96  
 617 5/31/96  
 618 5/31/96  
 619 5/31/96  
 620 5/31/96  
 621 5/31/96  
 622 5/31/96  
 623 5/31/96  
 624 5/31/96  
 625 5/31/96  
 626 5/31/96  
 627 5/31/96  
 628 5/31/96  
 629 5/31/96  
 630 5/31/96  
 631 5/31/96  
 632 5/31/96  
 633 5/31/96  
 634 5/31/96  
 635 5/31/96  
 636 5/31/96  
 637 5/31/96  
 638 5/31/96  
 639 5/31/96  
 640 5/31/96  
 641 5/31/96  
 642 5/31/96  
 643 5/31/96  
 644 5/31/96  
 645 5/31/96  
 646 5/31/96  
 647 5/31/96  
 648 5/31/96



**CONSTRUCTION NOTES**

**GENERAL**

1. ALL WORK SHALL BE IN ACCORDANCE WITH THE LATEST EDITIONS OF THE SPECIFICATIONS FOR CONSTRUCTION OF DAMS AND RELATED STRUCTURES, AS APPLICABLE.
2. THE CONTRACTOR SHALL BE RESPONSIBLE FOR OBTAINING ALL NECESSARY PERMITS AND APPROVALS FROM THE APPROPRIATE AGENCIES.
3. THE CONTRACTOR SHALL MAINTAIN ACCESS TO ALL ADJACENT PROPERTIES AND ROADS AT ALL TIMES.
4. THE CONTRACTOR SHALL BE RESPONSIBLE FOR THE PROTECTION OF ALL EXISTING UTILITIES AND STRUCTURES.
5. THE CONTRACTOR SHALL MAINTAIN ADEQUATE DRAINAGE SYSTEMS THROUGHOUT THE PROJECT.
6. THE CONTRACTOR SHALL BE RESPONSIBLE FOR THE PROTECTION OF ALL ENVIRONMENTAL FEATURES AND WETLANDS.
7. THE CONTRACTOR SHALL MAINTAIN ADEQUATE EROSION CONTROL MEASURES THROUGHOUT THE PROJECT.
8. THE CONTRACTOR SHALL BE RESPONSIBLE FOR THE PROTECTION OF ALL HISTORIC AND CULTURAL RESOURCES.
9. THE CONTRACTOR SHALL MAINTAIN ADEQUATE RECORDS OF ALL CONSTRUCTION ACTIVITIES.
10. THE CONTRACTOR SHALL BE RESPONSIBLE FOR THE PROTECTION OF ALL SAFETY FEATURES AND BARRIERS.

**FOUNDATION**

1. ALL FOUNDATION WORK SHALL BE IN ACCORDANCE WITH THE LATEST EDITIONS OF THE SPECIFICATIONS FOR CONSTRUCTION OF DAMS AND RELATED STRUCTURES, AS APPLICABLE.
2. THE CONTRACTOR SHALL BE RESPONSIBLE FOR THE PROTECTION OF ALL EXISTING FOUNDATIONS AND STRUCTURES.
3. THE CONTRACTOR SHALL MAINTAIN ADEQUATE RECORDS OF ALL FOUNDATION WORK.

**CONCRETE**

1. ALL CONCRETE WORK SHALL BE IN ACCORDANCE WITH THE LATEST EDITIONS OF THE SPECIFICATIONS FOR CONSTRUCTION OF DAMS AND RELATED STRUCTURES, AS APPLICABLE.
2. THE CONTRACTOR SHALL BE RESPONSIBLE FOR THE PROTECTION OF ALL EXISTING CONCRETE STRUCTURES.
3. THE CONTRACTOR SHALL MAINTAIN ADEQUATE RECORDS OF ALL CONCRETE WORK.

**STEEL**

1. ALL STEEL WORK SHALL BE IN ACCORDANCE WITH THE LATEST EDITIONS OF THE SPECIFICATIONS FOR CONSTRUCTION OF DAMS AND RELATED STRUCTURES, AS APPLICABLE.
2. THE CONTRACTOR SHALL BE RESPONSIBLE FOR THE PROTECTION OF ALL EXISTING STEEL STRUCTURES.
3. THE CONTRACTOR SHALL MAINTAIN ADEQUATE RECORDS OF ALL STEEL WORK.

**SOILS**

1. ALL SOILS WORK SHALL BE IN ACCORDANCE WITH THE LATEST EDITIONS OF THE SPECIFICATIONS FOR CONSTRUCTION OF DAMS AND RELATED STRUCTURES, AS APPLICABLE.
2. THE CONTRACTOR SHALL BE RESPONSIBLE FOR THE PROTECTION OF ALL EXISTING SOILS.
3. THE CONTRACTOR SHALL MAINTAIN ADEQUATE RECORDS OF ALL SOILS WORK.

**WATER CONTROL**

1. ALL WATER CONTROL WORK SHALL BE IN ACCORDANCE WITH THE LATEST EDITIONS OF THE SPECIFICATIONS FOR CONSTRUCTION OF DAMS AND RELATED STRUCTURES, AS APPLICABLE.
2. THE CONTRACTOR SHALL BE RESPONSIBLE FOR THE PROTECTION OF ALL EXISTING WATER CONTROL STRUCTURES.
3. THE CONTRACTOR SHALL MAINTAIN ADEQUATE RECORDS OF ALL WATER CONTROL WORK.

**ROCK**

1. ALL ROCK WORK SHALL BE IN ACCORDANCE WITH THE LATEST EDITIONS OF THE SPECIFICATIONS FOR CONSTRUCTION OF DAMS AND RELATED STRUCTURES, AS APPLICABLE.
2. THE CONTRACTOR SHALL BE RESPONSIBLE FOR THE PROTECTION OF ALL EXISTING ROCK STRUCTURES.
3. THE CONTRACTOR SHALL MAINTAIN ADEQUATE RECORDS OF ALL ROCK WORK.

**WOOD**

1. ALL WOOD WORK SHALL BE IN ACCORDANCE WITH THE LATEST EDITIONS OF THE SPECIFICATIONS FOR CONSTRUCTION OF DAMS AND RELATED STRUCTURES, AS APPLICABLE.
2. THE CONTRACTOR SHALL BE RESPONSIBLE FOR THE PROTECTION OF ALL EXISTING WOOD STRUCTURES.
3. THE CONTRACTOR SHALL MAINTAIN ADEQUATE RECORDS OF ALL WOOD WORK.

**PAVING**

1. ALL PAVING WORK SHALL BE IN ACCORDANCE WITH THE LATEST EDITIONS OF THE SPECIFICATIONS FOR CONSTRUCTION OF DAMS AND RELATED STRUCTURES, AS APPLICABLE.
2. THE CONTRACTOR SHALL BE RESPONSIBLE FOR THE PROTECTION OF ALL EXISTING PAVING STRUCTURES.
3. THE CONTRACTOR SHALL MAINTAIN ADEQUATE RECORDS OF ALL PAVING WORK.

**FINISH**

1. ALL FINISH WORK SHALL BE IN ACCORDANCE WITH THE LATEST EDITIONS OF THE SPECIFICATIONS FOR CONSTRUCTION OF DAMS AND RELATED STRUCTURES, AS APPLICABLE.
2. THE CONTRACTOR SHALL BE RESPONSIBLE FOR THE PROTECTION OF ALL EXISTING FINISH STRUCTURES.
3. THE CONTRACTOR SHALL MAINTAIN ADEQUATE RECORDS OF ALL FINISH WORK.

**APPENDIX**

*[Handwritten signature]*

**38**