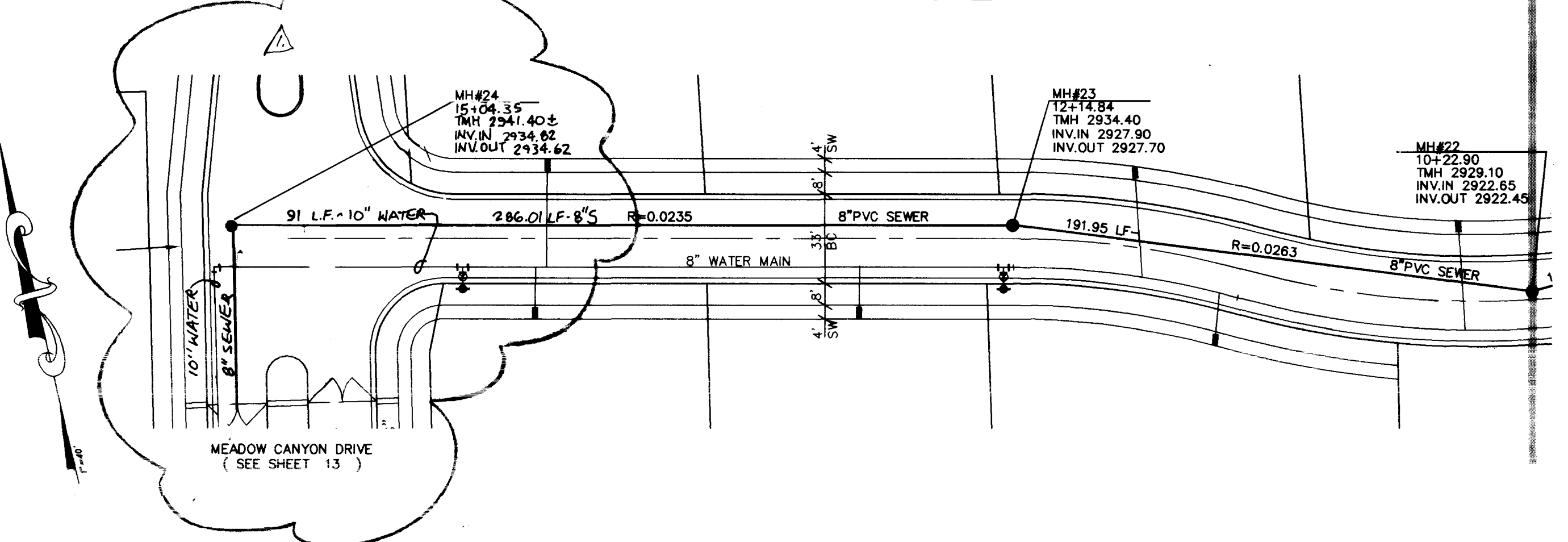
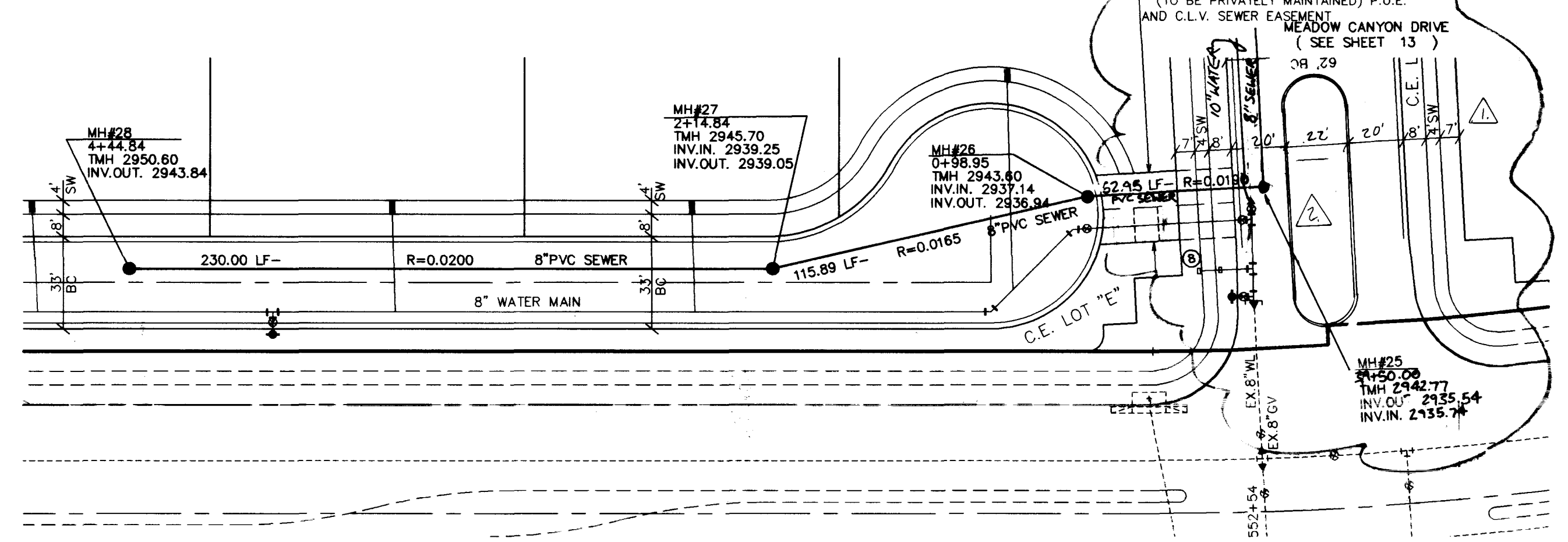


ROCKY MESA LANE (PRIVATE DRIVE AND CLV SEWER EASEMENT)

STONY RIDGE LANE (PRIVATE DRIVE AND CLV SEWER EASEMENT)



STA. 10+22.90 MATCHLINE - SEE SHEET 14 OF 156

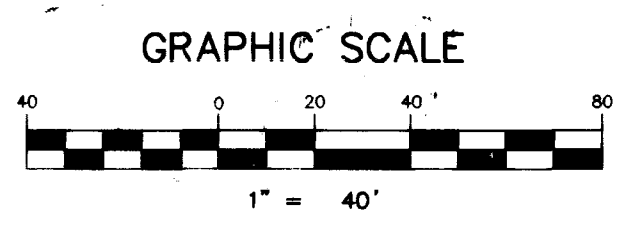
BENCHMARK
 PROJECT DATUM SUMMERLIN
 CLV BENCHMARK NO. CLV0936SES
 RIVET AND PLATE IN TOP OF CURB NORTHEAST RETURN OF
 CHARESTON BOULEVARD AND HUALPAI.
 ELEVATION=2910.05 (SUMMERLIN DATUM)
 ELEVATION=887.6503 METERS(2912.23 FEET)=(NAVD 88 DATUM)

Avoid cutting underground utility lines. It's costly.
Call before you Dig
 1-800-227-2600

Avoid overhead power line contact
Call before you OVERHEAD
 1-702-593-6111

NOTE:
 ALL STATIONING IS BASED ON SEWER LENGTHS FROM MANHOLE TO MANHOLE.

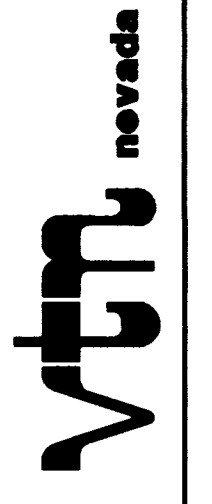
NOTE: CONTRACTOR SHALL VERIFY HORIZONTAL AND VERTICAL LOCATION OF EXISTING UTILITIES AND NOTIFY THE DESIGN ENGINEER IMMEDIATELY OF ANY DISCREPANCIES PRIOR TO CONSTRUCTION.



REV	DATE	BY	REVISION
3	5-98	MDM	REV ISLAND LOCATION
2	12-19-97	MDM	MOVE WATER & SEWER LINES

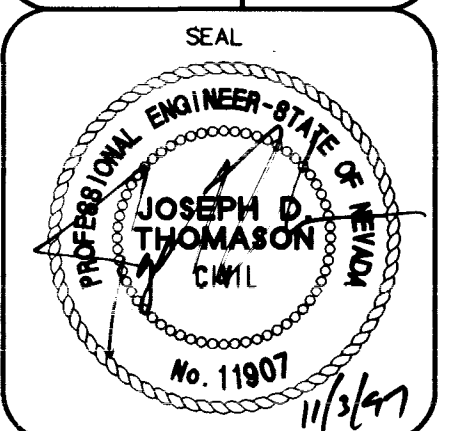
BRENTWOOD MEMBERS, L.L.C.
 CITY OF LAS VEGAS, NEVADA

CONSULTING ENGINEERS • PLANNERS • LAND SURVEYORS
 2727 SOUTH RAINBOW BOULEVARD
 LAS VEGAS, NEVADA 89102-5148 PHONE (702) 873-7550 FAX (702) 362-2597



SEWER PLAN & PROFILE
STONY RIDGE LANE
ROCKY MESA LANE

STAR CANYON ESTATES
 PARCEL "P-Q"-SUMMERLIN VILLAGE 3

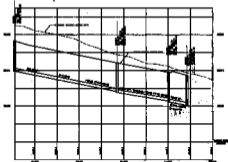


WO NO. **5165**
 BY **CG/DLG**
 DATE **MAY, 1997**
 SCALE HORIZ. 1"=40'
 VERT. 1"=4'
 SHEET **15** OF 15 SHEETS

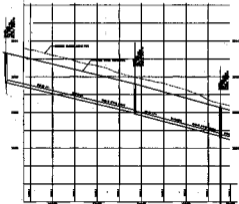
H:\CAD\LAND\5165\516555P.dwg JUN 30 12:56:43 1997 PLOTTED BY TFA

7034

307Y-4526



ROCKY MESA LANE (FROM THE 40' BY 60' AREA (PART))



STORY RIDGE LANE (FROM THE 40' BY 60' AREA (PART))



ENGINEER
STEVENS
 1000 S. 10th St.
 DENVER, CO 80202

Call
 1-800-441-2222

Call
 1-800-441-2222

STEVENS

STEVENS

GRAPHIC SCALE



1/8" = 10'
 1/4" = 20'
 1/2" = 40'
 3/4" = 60'
 1" = 80'

STEVENS ENGINEERS & ARCHITECTS
 1000 S. 10th St.
 DENVER, CO 80202
 (303) 733-4300

SEWER PLAN & PROFILE
 STORY RIDGE LANE
 ROCKY MESA LANE
 STAR CANYON ESTATE
 PHASE 1, 40' WIDE LANE