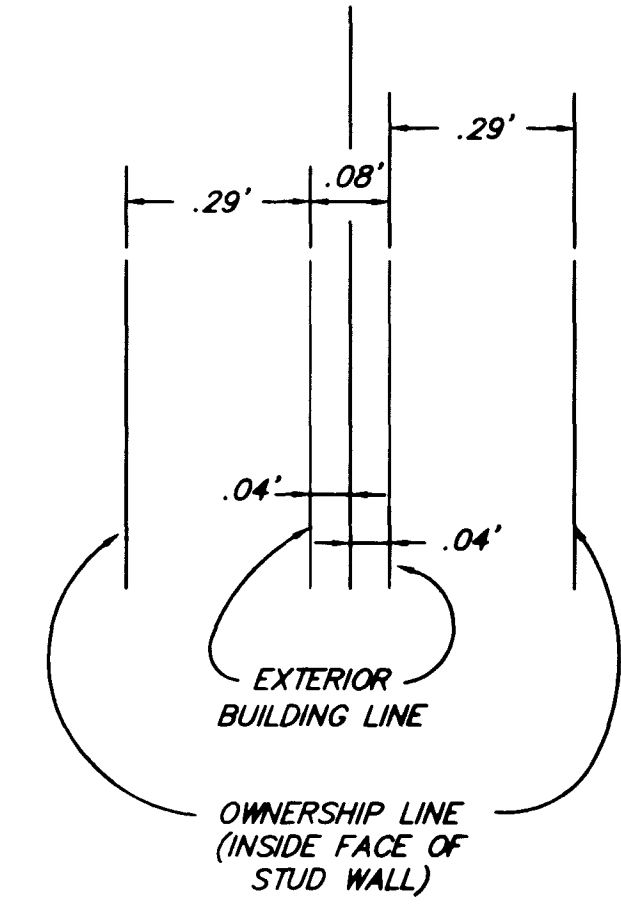


THE PLAT OF

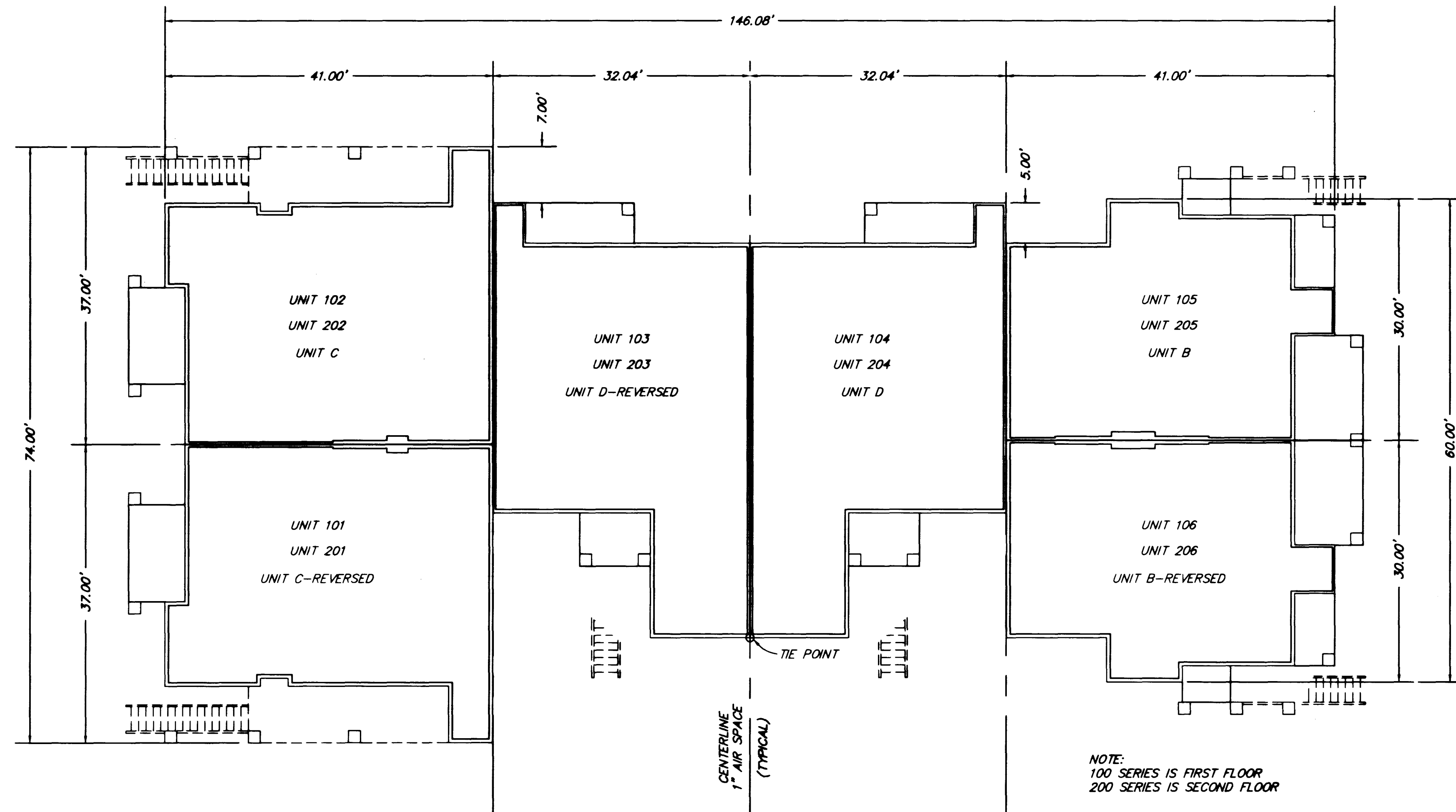
SILVER PINES CONDOMINIUMS

A COMMON INTEREST OWNERSHIP (CONDOMINIUM) SUBDIVISION

SITUATE IN THE CITY OF LAS VEGAS, CLARK COUNTY, NEVADA BEING LOT 10 OF FILE 75 OF PLATS, PAGE 75.
ALSO BEING A PORTION OF SECTION 36, TOWNSHIP 20 SOUTH, RANGE 59 EAST, M.D.M.



COMMON WALL DETAIL
NOT TO SCALE



BUILDING TYPE A - FLOOR PLAN

Scale 1"=10'

4088

THE PLAT OF

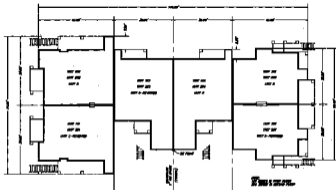
SILVER PAVES CONDOMINIUMS

A COMMON INTEREST OWNERSHIP (CONDOMINIUM) SUBDIVISION

SITUATE IN THE CITY OF LAS VEGAS, CLARK COUNTY, NEVADA BEING LOT 10 OF FILE 75 OF PLATS, PAGE 75.
ALSO BEING A PORTION OF SECTION 36, TOWNSHIP 20 SOUTH, RANGE 59 EAST, M.D.M.



COMMON HALL DETAIL
SEE PLAN



UNIT TYPE A - FLOOR PLAN
SEE PLAN