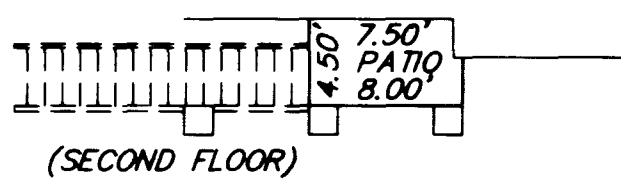
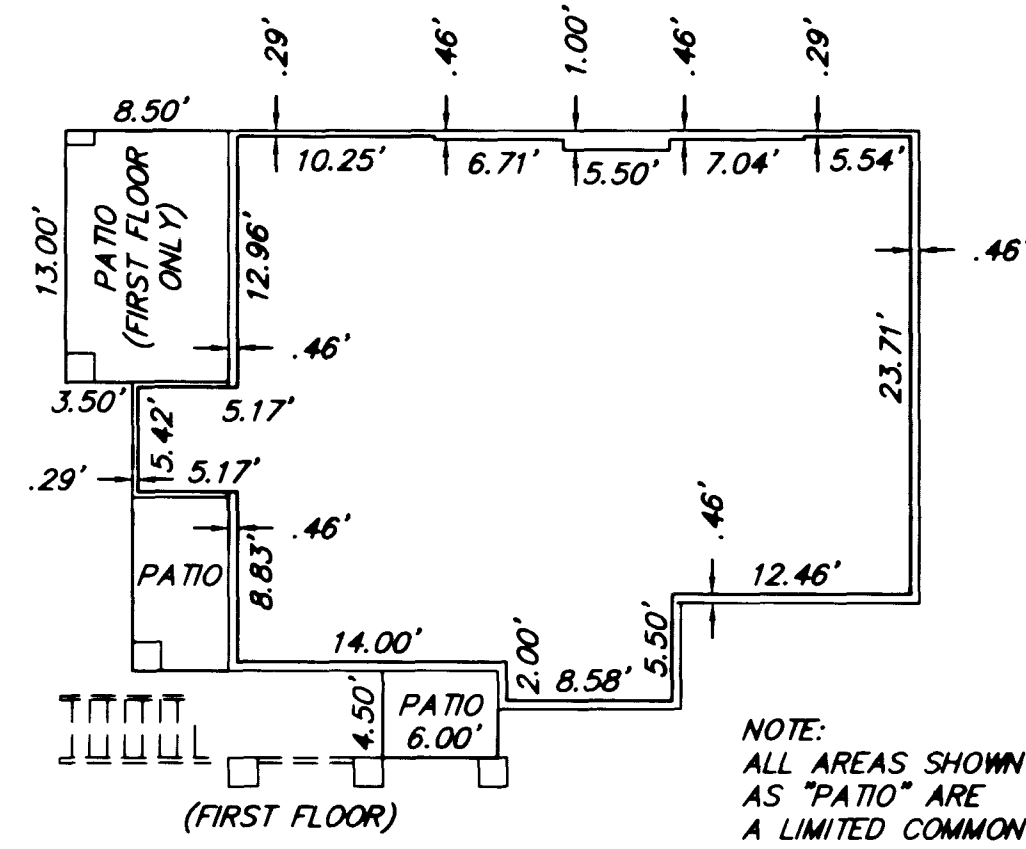


THE PLAT OF
SILVER PINES CONDOMINIUMS

A COMMON INTEREST OWNERSHIP (CONDOMINIUM) SUBDIVISION

SITUATE IN THE CITY OF LAS VEGAS, CLARK COUNTY, NEVADA BEING LOT 10 OF FILE 75 OF PLATS, PAGE 75.

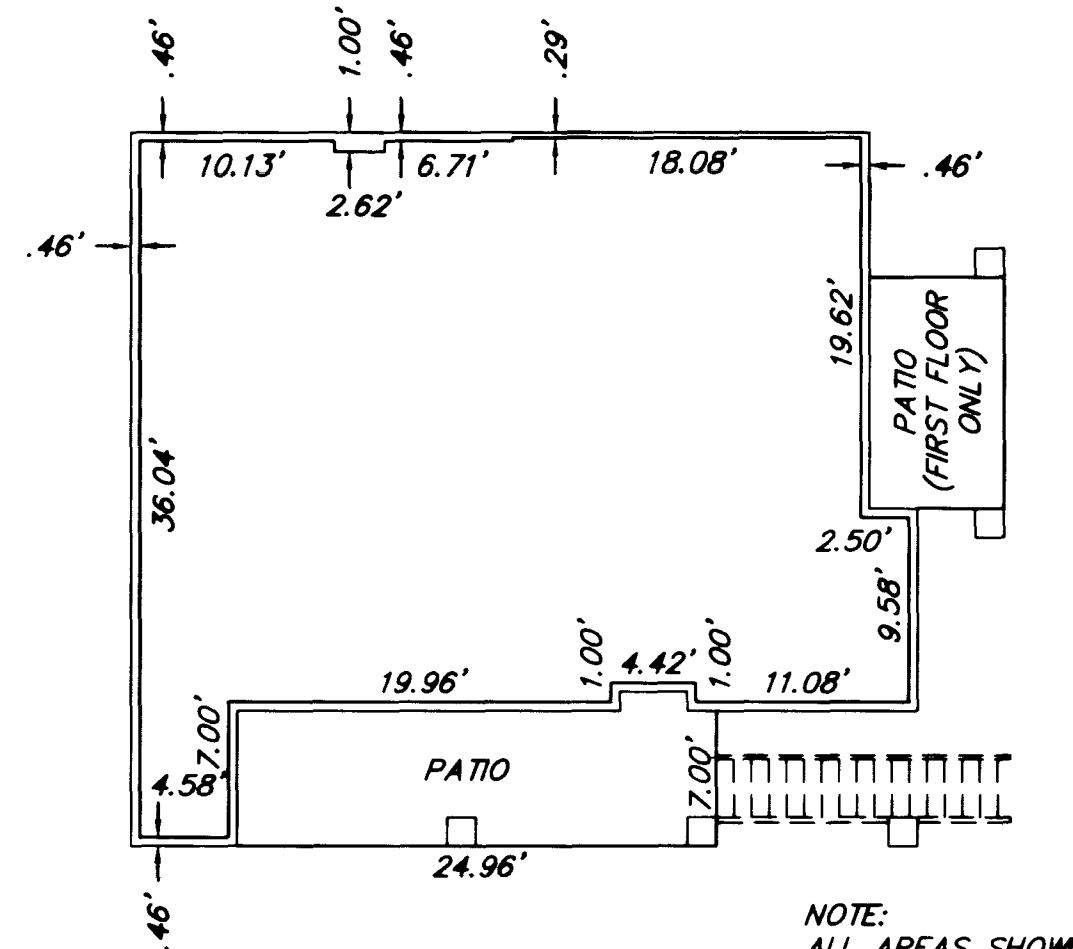
ALSO BEING A PORTION OF SECTION 36, TOWNSHIP 20 SOUTH, RANGE 59 EAST, M.D.M.



UNIT B - PLAN VIEW

948 Sq. Ft.
 Scale 1"=10'

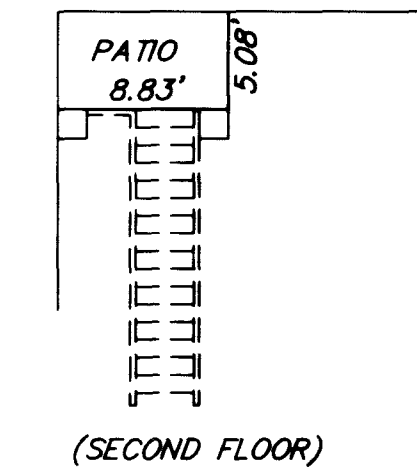
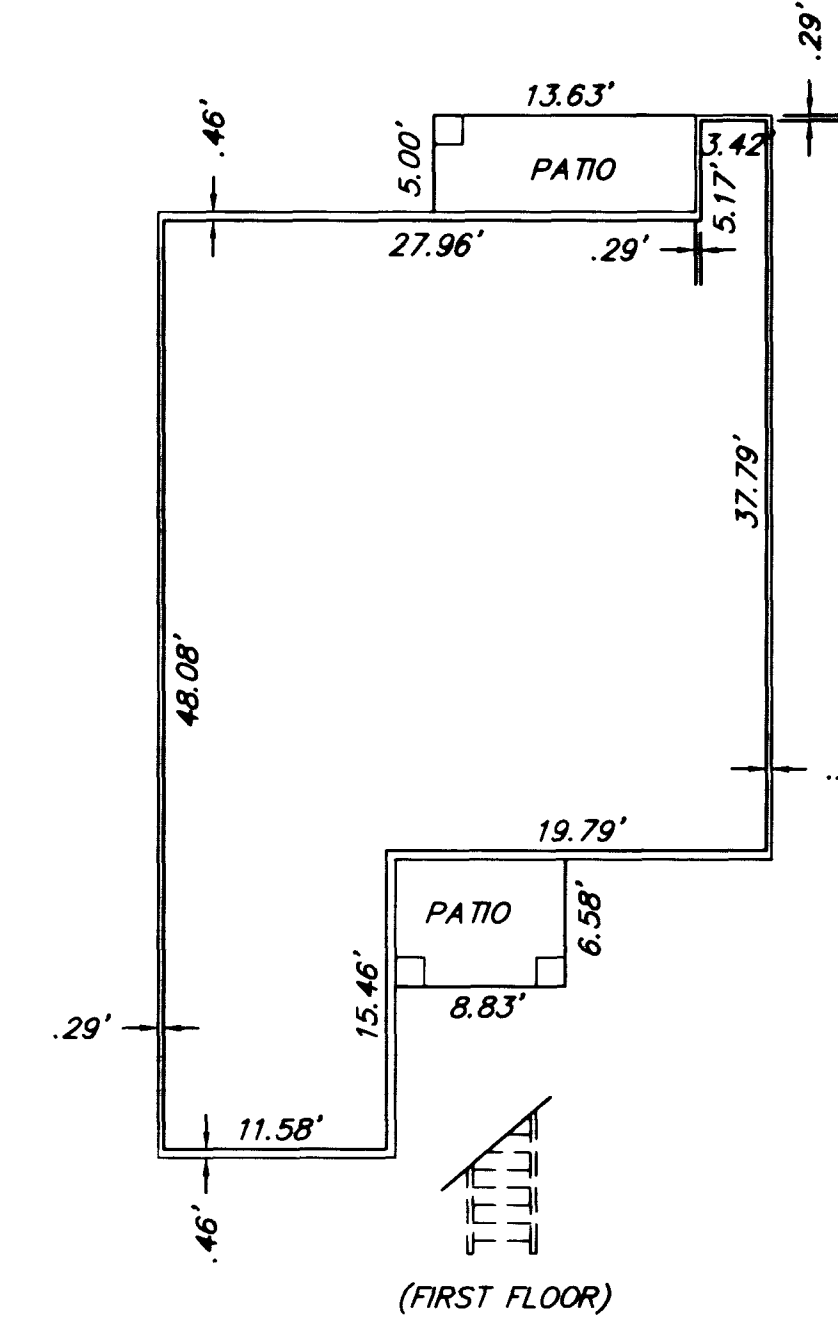
NOTE:
 ALL AREAS SHOWN
 AS "PATIO" ARE
 A LIMITED COMMON
 ELEMENT



UNIT C - PLAN VIEW

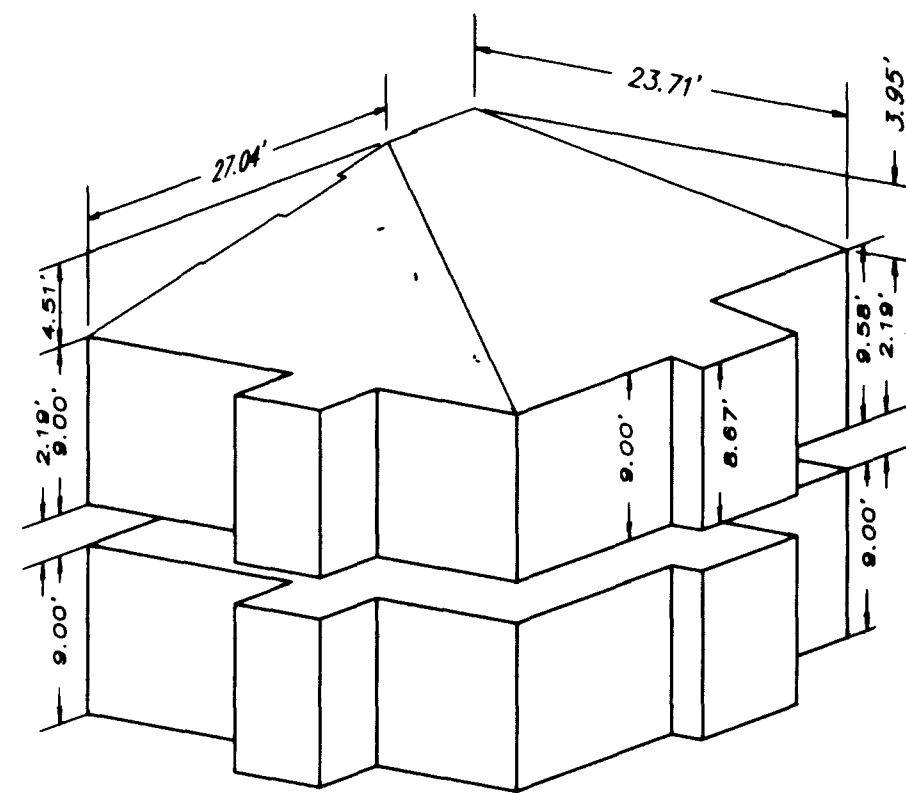
1143 Sq. Ft.
 Scale 1"=10'

NOTE:
 ALL AREAS SHOWN
 AS "PATIO" ARE
 A LIMITED COMMON
 ELEMENT



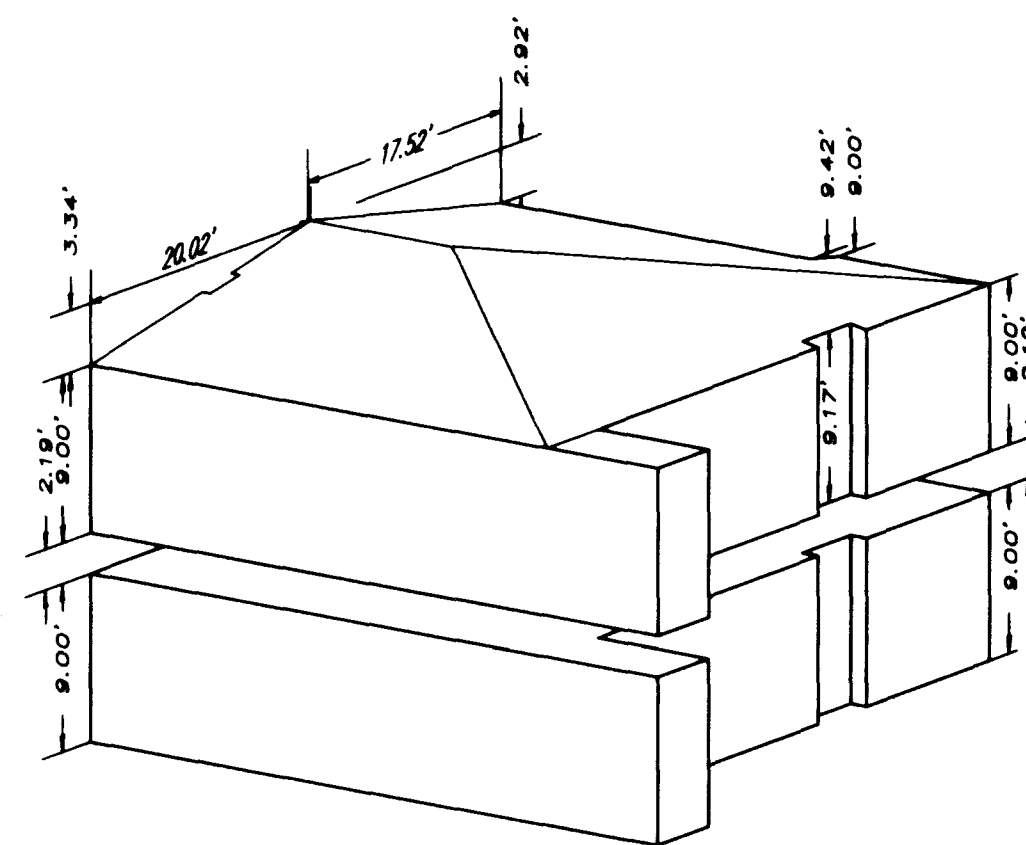
NOTE:
 ALL AREAS SHOWN
 AS "PATIO" ARE
 A LIMITED COMMON
 ELEMENT

SECOND FLOOR UNITS HAVE
 VAULTED CEILINGS AS SHOWN,
 FIRST FLOOR CEILINGS ARE
 FLAT.



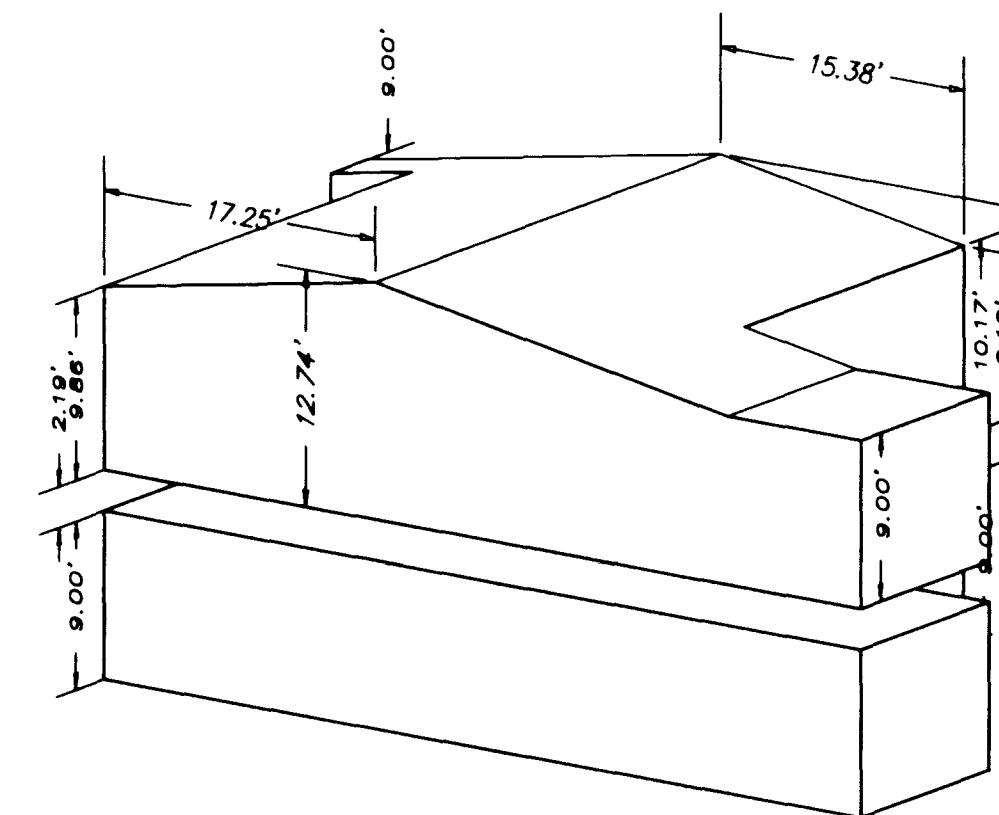
**UNIT B UPPER AND LOWER
 LOWER LEFT ISOMETRIC VIEW**

SCALE: 1" = 10'



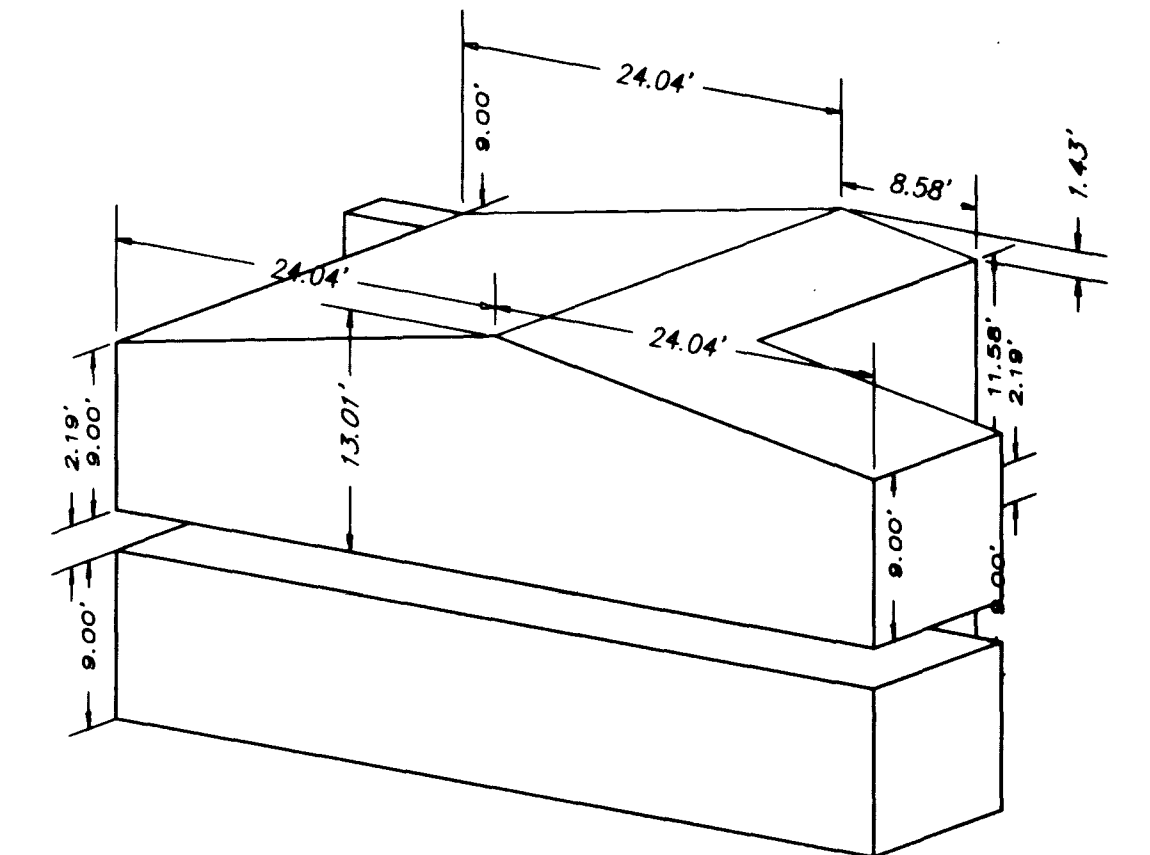
**UNIT C UPPER AND LOWER
 LOWER LEFT ISOMETRIC VIEW**

SCALE: 1" = 10'



**UNIT D UPPER AND LOWER
 BUILDING "A"
 LOWER LEFT ISOMETRIC VIEW**

SCALE: 1" = 10'



**UNIT D UPPER AND LOWER
 BUILDINGS "B" AND "C"
 LOWER LEFT ISOMETRIC VIEW**

SCALE: 1" = 10'

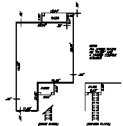
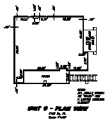
7087

THE PLAT OF

SILVER PINES CONDOMINIUMS

A COMMON INTEREST OWNERSHIP (CONDOMINIUM) SUBDIVISION

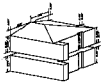
SITUATE IN THE CITY OF LAS VEGAS, CLARK COUNTY, NEVADA BEING LOT 10 OF FILE 75 OF PLATS, PAGE 75.
ALSO BEING A PORTION OF SECTION 36, TOWNSHIP 20 SOUTH, RANGE 59 EAST, M.D.M.



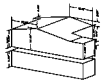
SECTION CUTS
FOR PLANS ABOVE



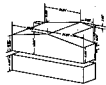
**UNIT 2 UPPER AND LOWER
LOWER LEFT ISOMETRIC VIEW**
SCALE: 1/8" = 1'-0"



**UNIT 3 UPPER AND LOWER
LOWER LEFT ISOMETRIC VIEW**
SCALE: 1/8" = 1'-0"



**UNIT 4 UPPER AND LOWER
BEHIND "D" AND "E"
LOWER LEFT ISOMETRIC VIEW**
SCALE: 1/8" = 1'-0"



**UNIT 5 UPPER AND LOWER
BEHIND "D" AND "E"
LOWER LEFT ISOMETRIC VIEW**
SCALE: 1/8" = 1'-0"