

THE PLAT OF

# SILVER PINES CONDOMINIUMS

A COMMON INTEREST OWNERSHIP (CONDOMINIUM) SUBDIVISION

SITUATE IN THE CITY OF LAS VEGAS, CLARK COUNTY, NEVADA BEING LOT 10 OF BOOK 75 OF PLATS, PAGE 75.

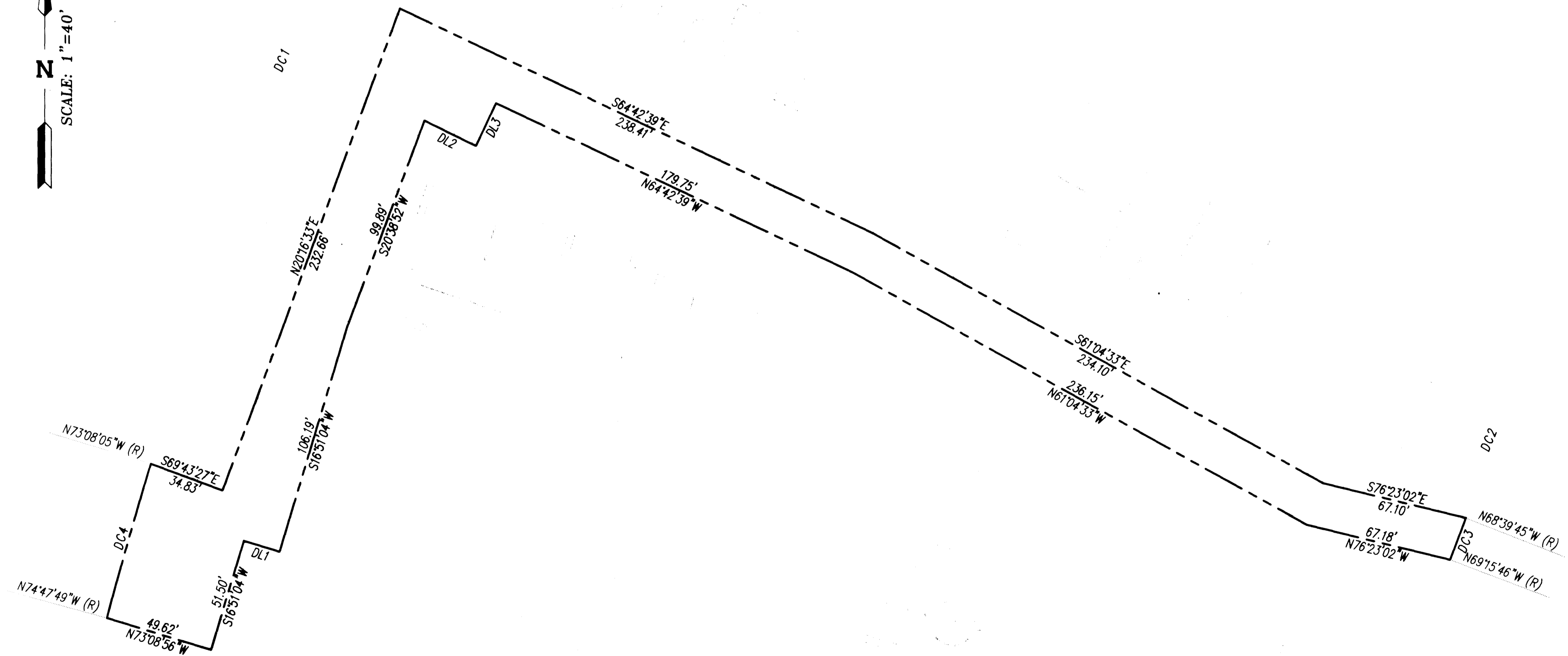
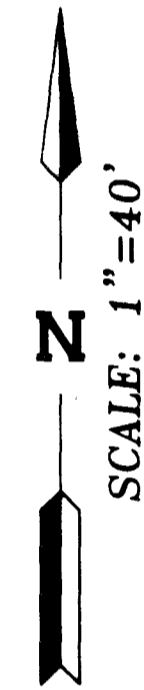
ALSO BEING A PORTION OF SECTION 36, TOWNSHIP 20 SOUTH, RANGE 59 EAST, M.D.M.

**DETAIL LINE DATA TABLE**

| No. | BEARING     | DISTANCE |
|-----|-------------|----------|
| DL1 | N73°08'56"W | 16.89    |
| DL2 | N63°54'34"W | 26.16    |
| DL3 | S25°17'21"W | 21.45    |

**DETAIL CURVE DATA TABLE**

| No. | RADIUS   | DELTA     | LENGTH  | TANGENT |
|-----|----------|-----------|---------|---------|
| DC1 | 2500.00' | 08°47'28" | 383.59' | 192.17' |
| DC2 | 1925.50' | 02°10'10" | 72.91'  | 36.46'  |
| DC3 | 1925.50' | 00°36'01" | 20.17'  | 10.08'  |
| DC4 | 2500.00' | 01°39'43" | 72.52'  | 36.26'  |



**DRAINAGE EASEMENT DETAIL**

SCALE: 1"=40'

4886

THE PLAT OF

# SILVER PINES CONDOMINIUMS

A COMMON INTEREST OWNERSHIP (CONDOMINIUM) SUBDIVISION

SITUATE IN THE CITY OF LAS VEGAS, CLARK COUNTY, NEVADA BEING LOT 10 OF BOOK 75 OF PLATS, PAGE 75.  
ALSO BEING A PORTION OF SECTION 36, TOWNSHIP 20 SOUTH, RANGE 59 EAST, M.D.M.

DETAIL LSW DATA TABLE

|  |  |  |  |  |
|--|--|--|--|--|
|  |  |  |  |  |
|  |  |  |  |  |
|  |  |  |  |  |
|  |  |  |  |  |
|  |  |  |  |  |

DETAIL CURVE DATA TABLE

|  |  |  |  |  |  |  |  |
|--|--|--|--|--|--|--|--|
|  |  |  |  |  |  |  |  |
|  |  |  |  |  |  |  |  |
|  |  |  |  |  |  |  |  |
|  |  |  |  |  |  |  |  |
|  |  |  |  |  |  |  |  |



DRAINAGE EASEMENT DETAIL