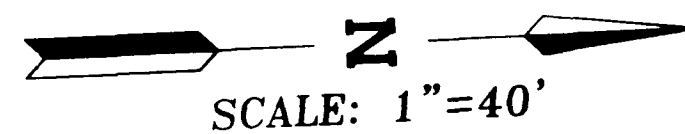


THE PLAT OF
SILVER PINES CONDOMINIUMS

A COMMON INTEREST OWNERSHIP (CONDOMINIUM) SUBDIVISION

SITUATE IN THE CITY OF LAS VEGAS, CLARK COUNTY, NEVADA BEING LOT 10 OF BOOK 75 OF PLATS, PAGE 75.

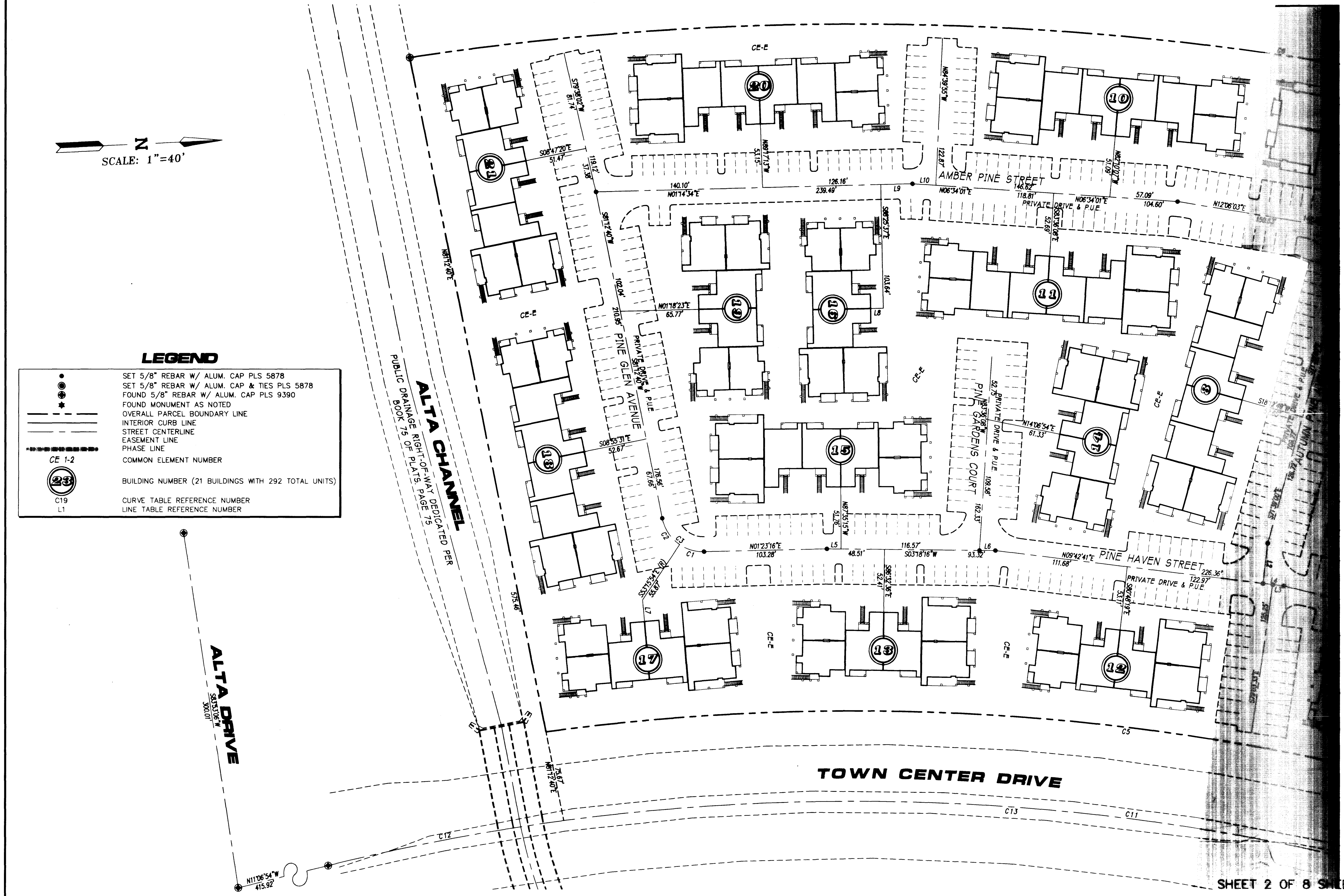
ALSO BEING A PORTION OF SECTION 36, TOWNSHIP 20 SOUTH, RANGE 59 EAST, M.D.M.



SCALE: 1"=40'

LEGEND

	SET 5/8" REBAR W/ ALUM. CAP PLS 5878
	SET 5/8" REBAR W/ ALUM. CAP & TIES PLS 5878
	FOUND 5/8" REBAR W/ ALUM. CAP PLS 9390
	FOUND MONUMENT AS NOTED
	OVERALL PARCEL BOUNDARY LINE
	INTERIOR CURB LINE
	STREET CENTERLINE
	EASEMENT LINE
	PHASE LINE
	COMMON ELEMENT NUMBER
	BUILDING NUMBER (21 BUILDINGS WITH 292 TOTAL UNITS)
	CURVE TABLE REFERENCE NUMBER
	LINE TABLE REFERENCE NUMBER



4084

3-1-20-095 73
4504

THE PLAT OF

SILVER PINES CONDOMINIUMS

A COMMON INTEREST OWNERSHIP (CONDOMINIUM) SUBDIVISION

SITUATE IN THE CITY OF LAS VEGAS, CLARK COUNTY, NEVADA BEING LOT 10 OF BOOK 75 OF PLATS, PAGE 75.
 ALSO BEING A PORTION OF SECTION 36, TOWNSHIP 20 SOUTH, RANGE 59 EAST, M.D.M.

