

971205

00874

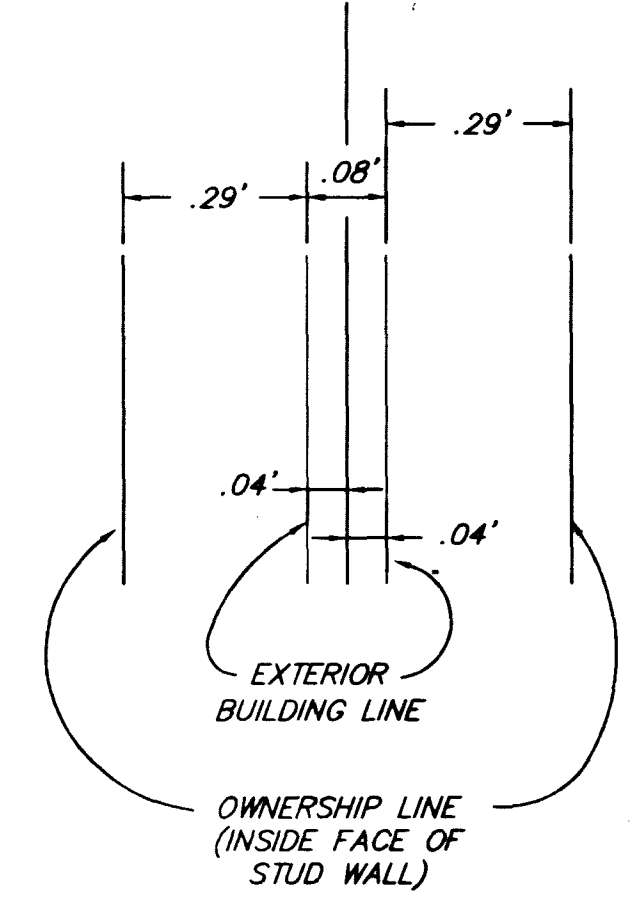
THE AMENDED PLAT OF

SILVER PINES CONDOMINIUMS

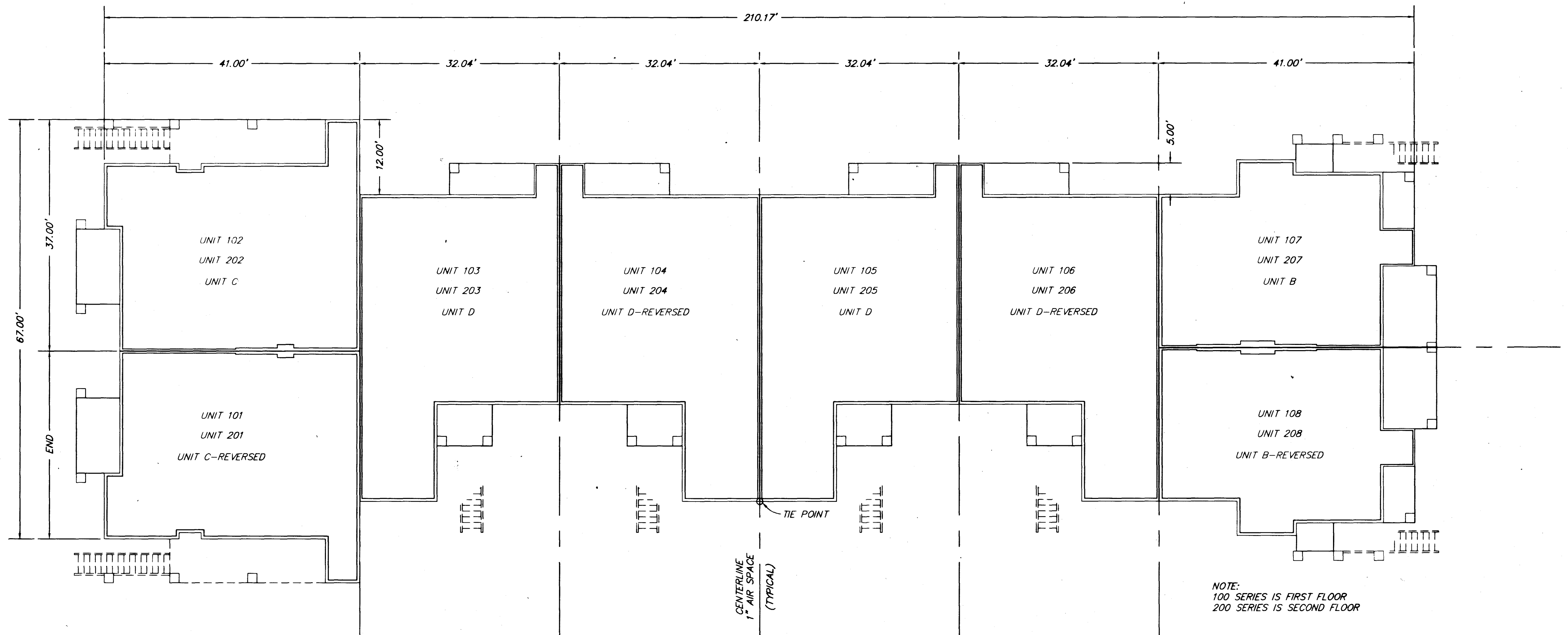
A COMMON INTEREST OWNERSHIP (CONDOMINIUM) SUBDIVISION

SITUATE IN THE CITY OF LAS VEGAS, CLARK COUNTY, NEVADA AS SHOWN IN BOOK 79 OF PLATS, PAGE 73.

ALSO BEING A PORTION OF SECTION 36, TOWNSHIP 20 SOUTH, RANGE 59 EAST, M.D.M.



COMMON WALL DETAIL
NOT TO SCALE



BUILDING TYPE C - FLOOR PLAN

Scale 1"=10'

1087

971205

00874

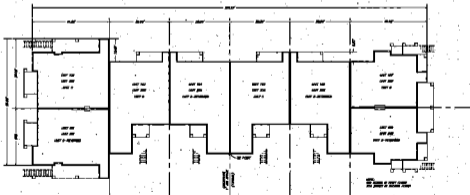
THE AMENDED PLAT OF

SILVER PINES CONDOMINIUMS

A COMMON INTEREST OWNERSHIP (CONDOMINIUM) SUBDIVISION

SITUATE IN THE CITY OF LAS VEGAS, CLARK COUNTY, NEVADA AS SHOWN IN BOOK 79 OF PLATS, PAGE 73.

ALSO BEING A PORTION OF SECTION 36, TOWNSHIP 20 SOUTH, RANGE 59 EAST, M.D.M.

COMMON WALL DETAIL
1/2" = 1'-0"BUILDING TYPE B - FLOOR PLAN
1/8" = 1'-0"

SHEET 8 OF 8 SHEETS

Exam. O.R. 1/10/00
Issued 1/10/00