

991205

00874

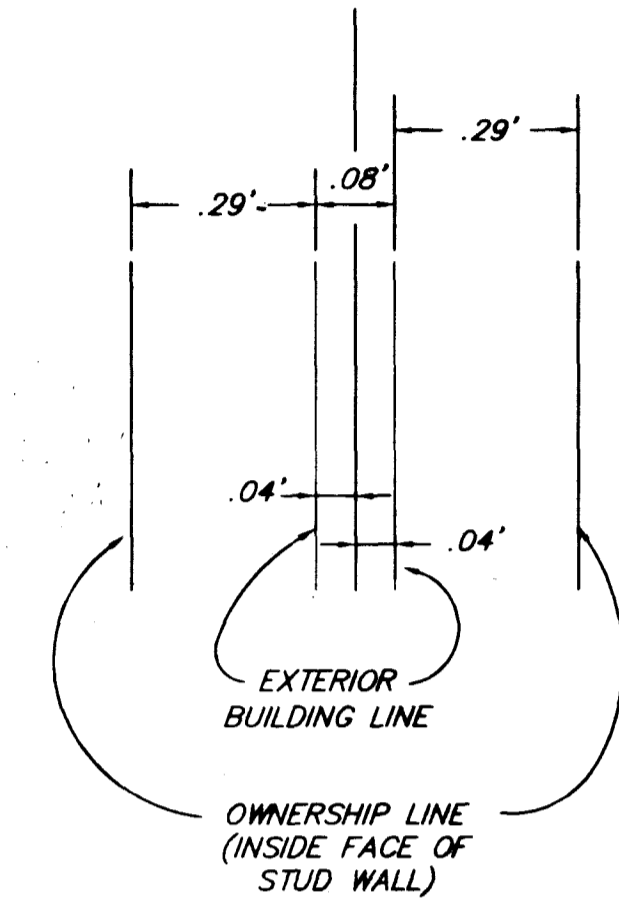
THE AMENDED PLAT OF

SILVER PINES CONDOMINIUMS

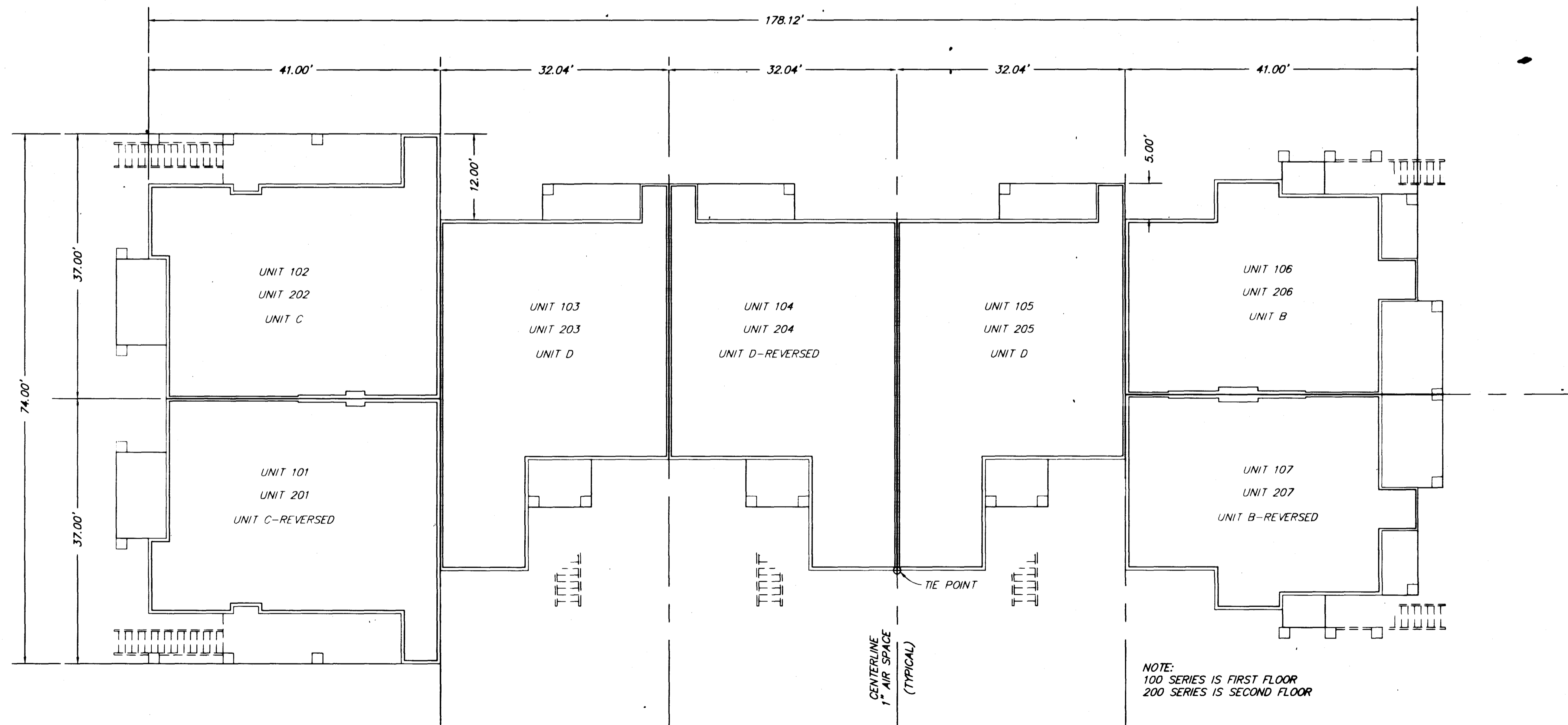
A COMMON INTEREST OWNERSHIP (CONDOMINIUM) SUBDIVISION

SITUATE IN THE CITY OF LAS VEGAS, CLARK COUNTY, NEVADA AS SHOWN IN BOOK 79 OF PLATS, PAGE 73.

ALSO BEING A PORTION OF SECTION 36, TOWNSHIP 20 SOUTH, RANGE 59 EAST, M.D.M.



COMMON WALL DETAIL
NOT TO SCALE



BUILDING TYPE B - FLOOR PLAN

Scale 1"=10'

4081

