

Call before you Dig
1-800-227-2600

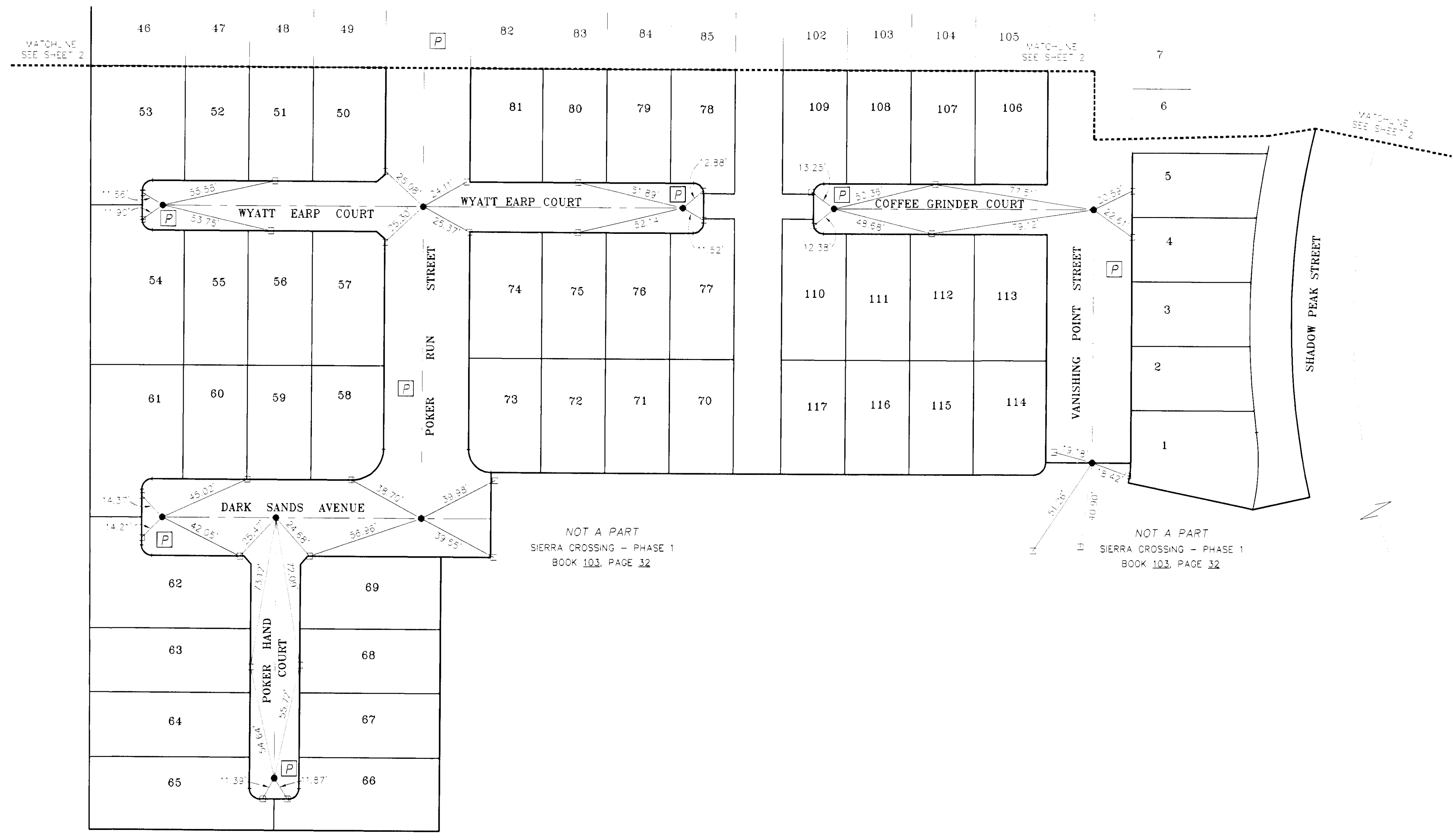
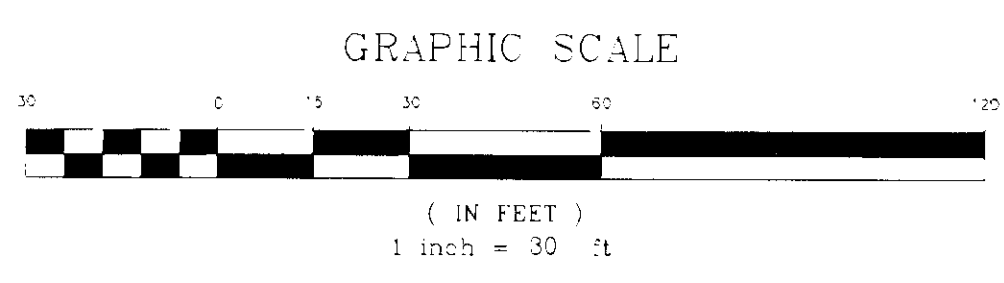
MONUMENT TIE MAP OF SIERRA CROSSINGS - PHASE 2

(AS RECORDED IN BOOK 105 OF PLATS PAGE 54)
BEING A PORTION OF PARCEL "C" AS FOUND IN FILE 99 OF PARCEL MAPS, PAGE 98,
A SUBDIVISION OF A PORTION OF THE EAST HALF (E 1/2) OF SECTION 12,
TOWNSHIP 20 SOUTH, RANGE 59 EAST, M.D.M., CITY OF LAS VEGAS, CLARK COUNTY, NEVADA



LEGEND

- MATCHLINE
- SET 5/8" REBAR W/AL CAP
PLS # 8895 W/REFERENCE TIES
- SET BRASS CAP IN TOP
OF CURB PLS # 8895
- 57 LOT NUMBER
- P PRIVATE STREETS



NOT A PART
SIERRA CROSSING - PHASE 1
BOOK 103, PAGE 32

NOT A PART
SIERRA CROSSING - PHASE 1
BOOK 103, PAGE 32

NOT A PART
SIERRA CROSSING - PHASE 1
BOOK 103, PAGE 32

SURVEYOR'S CERTIFICATE

I, ERIC CHRISTIANSON, A PROFESSIONAL LAND SURVEYOR, LICENSED IN THE STATE OF NEVADA, DO HEREBY CERTIFY THAT THE MONUMENTS HAVE BEEN SET AND THE TIE DISTANCE ESTABLISHED AS SHOWN HEREON. THIS SURVEY WAS COMPLETED ON AUGUST 27, 2008.

ERIC CHRISTIANSON
PROFESSIONAL LAND SURVEYOR
STATE OF NEVADA
LICENSE NO. 8895



FMP 15791

Job Number	511307	Scale	AS SHOWN
Drawn by	WE	Checked by	WE
Street Number	1 OF 2	Date	AUGUST 28, 2008
File No.	1307M2-1	Revision	No.
Revision		Date	
Appr.		Date	

