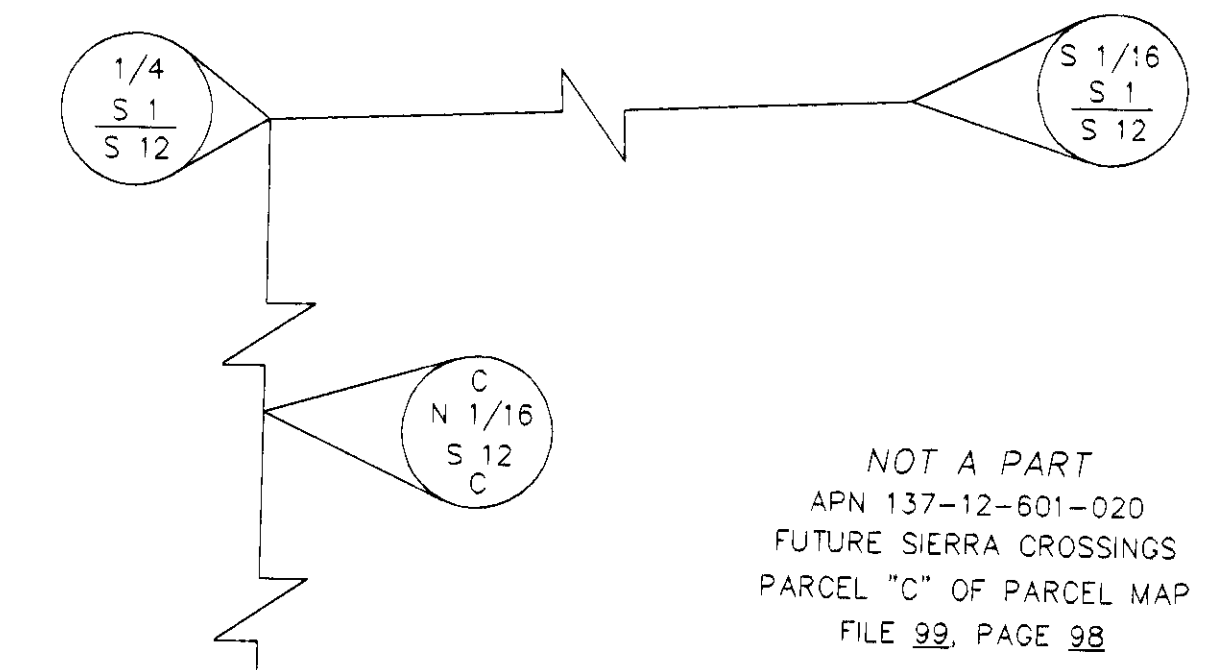
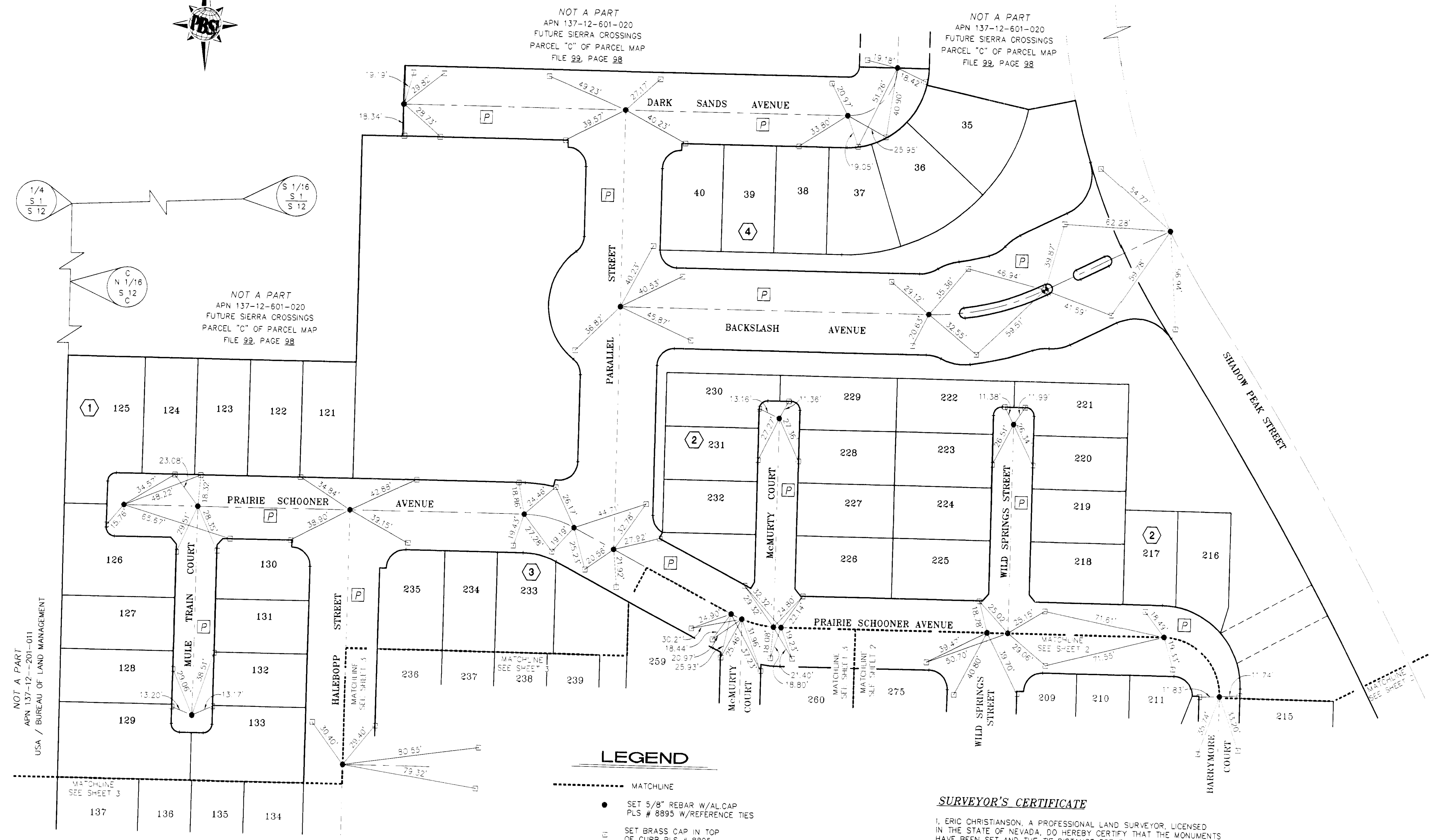


Call before you Dig
1-800-227-2600

MONUMENT TIE MAP OF SIERRA CROSSINGS - PHASE 1

(AS RECORDED IN BOOK 103 OF PLATS PAGE 32)
BEING A PORTION OF PARCEL "C" AS FOUND IN FILE 99 OF PARCEL MAPS, PAGE 98,
A SUBDIVISION OF A PORTION OF THE EAST HALF (E 1/2) OF SECTION 12,
TOWNSHIP 20 SOUTH, RANGE 59 EAST, M.D.M., CITY OF LAS VEGAS, CLARK COUNTY, NEVADA



NOT A PART
APN 137-12-201-011
USA / BUREAU OF LAND MANAGEMENT

NOT A PART
APN 137-12-601-020
FUTURE SIERRA CROSSINGS
PARCEL "C" OF PARCEL MAP
FILE 99, PAGE 98

NOT A PART
APN 137-12-601-020
FUTURE SIERRA CROSSINGS
PARCEL "C" OF PARCEL MAP
FILE 99, PAGE 98

NOT A PART
APN 137-12-601-020
FUTURE SIERRA CROSSINGS
PARCEL "C" OF PARCEL MAP
FILE 99, PAGE 98

LEGEND

- MATCHLINE
- SET 5/8" REBAR W/AL CAP
PLS # 8895 W/REFERENCE TIES
- ⊕ SET BRASS CAP IN TOP
OF CURB PLS # 8895
- 57 LOT NUMBER
- [P] PRIVATE STREETS
- [2] BLOCK NUMBER
- ⚡ CALCULATED POSITION
POINT COULD NOT BE SET

SURVEYOR'S CERTIFICATE

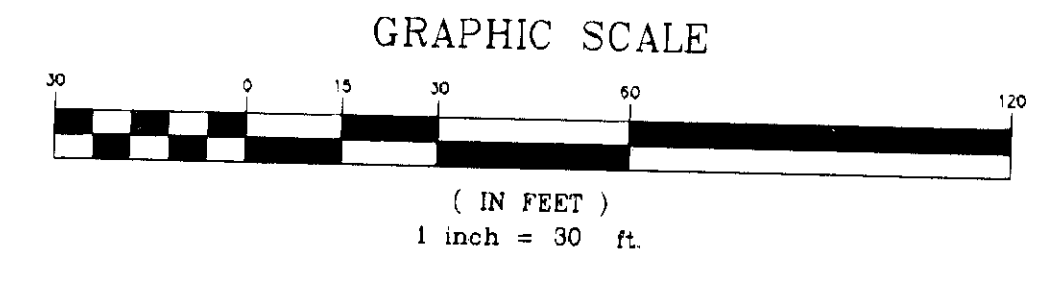
I, ERIC CHRISTIANSON, A PROFESSIONAL LAND SURVEYOR, LICENSED IN THE STATE OF NEVADA, DO HEREBY CERTIFY THAT THE MONUMENTS HAVE BEEN SET AND THE TIE DISTANCE ESTABLISHED AS SHOWN HEREON THIS SURVEY WAS COMPLETED ON AUGUST 27, 2008.

ERIC CHRISTIANSON
PROFESSIONAL LAND SURVEYOR
STATE OF NEVADA
LICENSE NO. 8895



9/3/08

FMP 15765



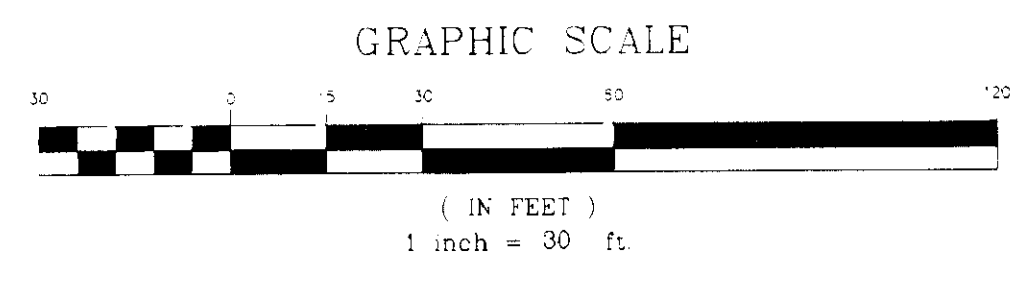
Job Number	511307	Drawn by	Scale	AS SHOWN
Sheet Number	101 3	Checked by	File No.	1307M1-1
Date	AUGUST 28, 2008	Date	1307M1-1	
<p>7770 Corporate Circle Las Vegas, Nevada 89074 Telephone: 702/763-7775 Fax: 702/763-7700</p> <p>PBS&J ENGINEERING - PLANNING - SURVEYING - CONSTRUCTION SERVICES</p>				
<p>MONUMENT TIE MAP FOR SIERRA CROSSINGS PHASE 1 BOOK 103, PAGE 32 OF PLATS CITY OF LAS VEGAS, CLARK COUNTY, NEVADA</p>				
No.	REVISIONS	Date	Incl.	Appr.

Call before you Dig
1-800-227-2600



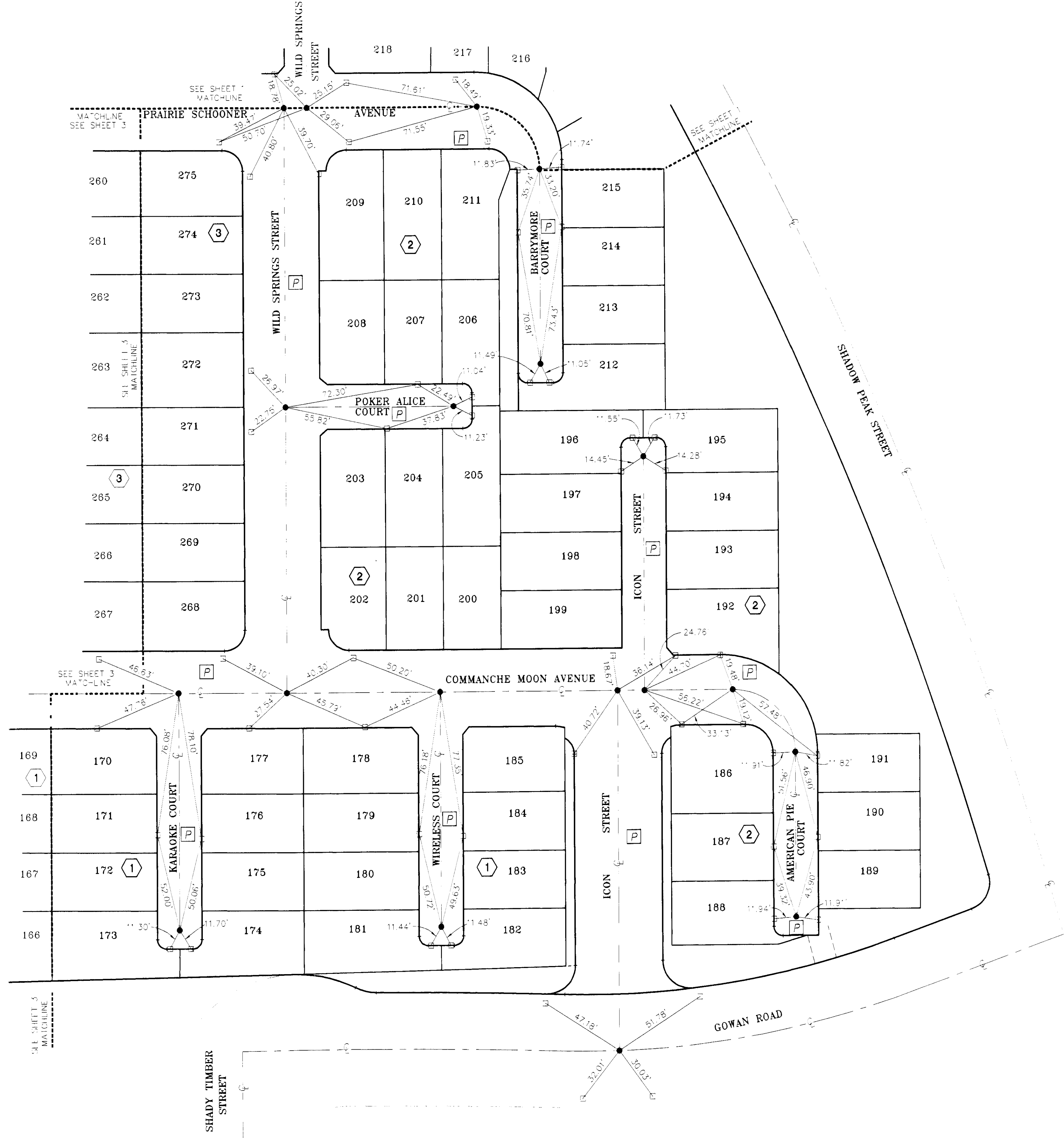
LEGEND

- MATCHLINE
- SET 5/8" REBAR W/AL-CAP PLS # 8895 W/REFERENCE TIES
- SET BRASS CAP IN TOP OF CURB PLS # 8895
- 57 LOT NUMBER
- [P] PRIVATE STREETS
- [2] BLOCK NUMBER



MONUMENT TIE MAP OF SIERRA CROSSINGS - PHASE 1
(AS RECORDED IN BOOK 103 OF PLATS PAGE 32)

BEING A PORTION OF PARCEL "C" AS FOUND IN FILE 99 OF PARCEL MAPS, PAGE 98,
A SUBDIVISION OF A PORTION OF THE EAST HALF (E 1/2) OF SECTION 12,
TOWNSHIP 20 SOUTH, RANGE 59 EAST, M.D.M., CITY OF LAS VEGAS, CLARK COUNTY, NEVADA



Job Number	511507	Drawn by	AS SHOWN	Scale	1:50/M-2
Sheet Number	2 (3)	Checked by	1/1	File No.	
		Date	AUGUST 28, 2008		
		PILOT DATE	08/28/08		
<p>MONUMENT TIE MAP FOR SIERRA CROSSINGS PHASE 1 BOOK 103, PAGE 32 OF PLATS CITY OF LAS VEGAS, CLARK COUNTY, NEVADA</p>					
<p>PBS ENGINEERING - PLANNING - SURVEYING - CONSTRUCTION SERVICES</p>					
<p>2240 Corporate Center Suite 100 Henderson, Nevada 89074 Telephone: 702/265-7775 Fax: 702/943-7200</p>					
		No.	REVISIONS	Date	Intr. Appr. Date

Call before you Dig
1-800-227-2600

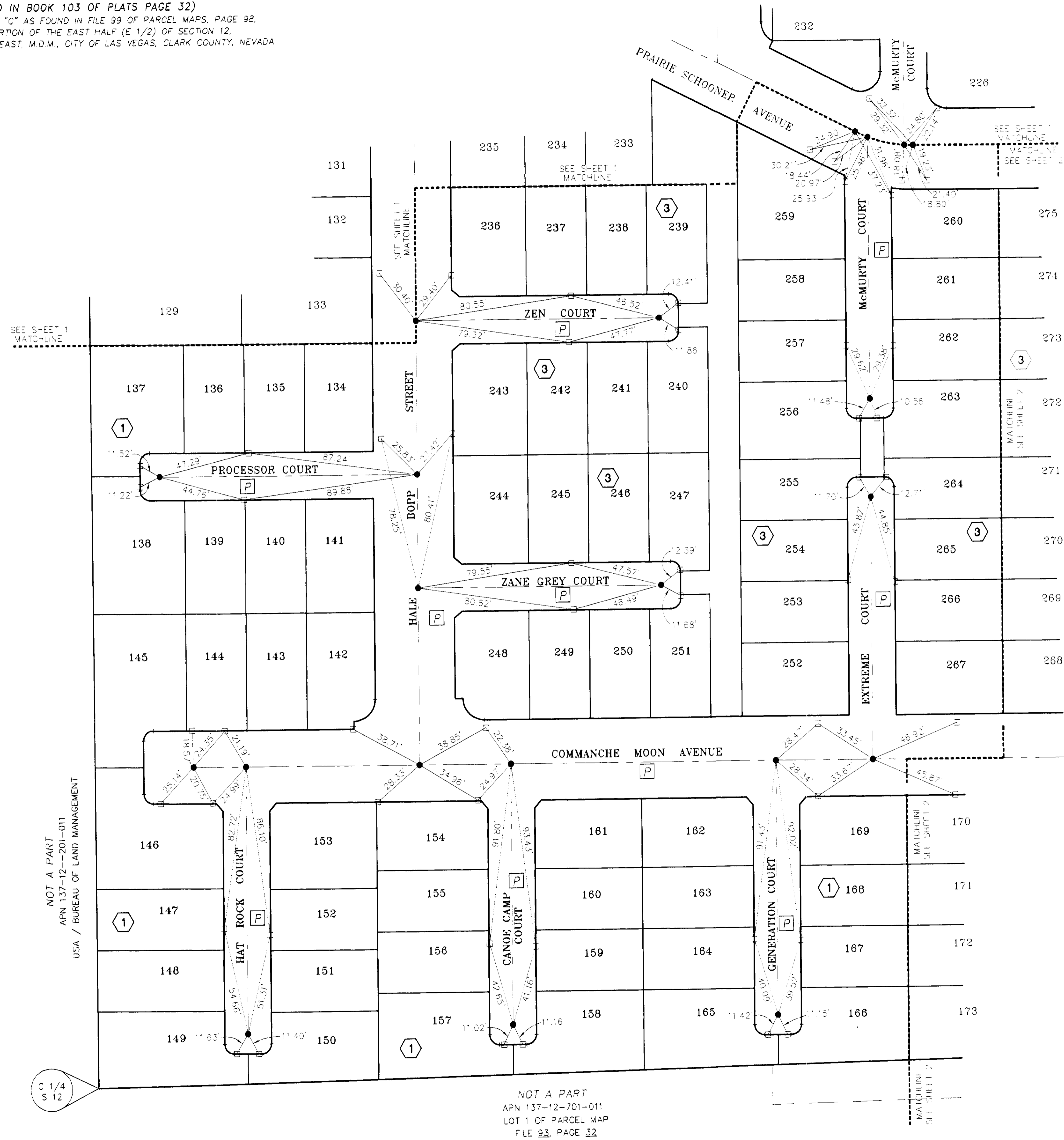
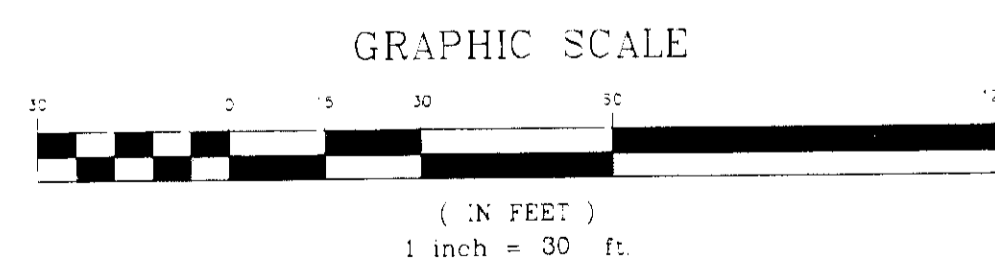
MONUMENT TIE MAP OF SIERRA CROSSINGS - PHASE 1

(AS RECORDED IN BOOK 103 OF PLATS PAGE 32)
BEING A PORTION OF PARCEL "C" AS FOUND IN FILE 99 OF PARCEL MAPS, PAGE 98,
A SUBDIVISION OF A PORTION OF THE EAST HALF (E 1/2) OF SECTION 12,
TOWNSHIP 20 SOUTH, RANGE 59 EAST, M.D.M., CITY OF LAS VEGAS, CLARK COUNTY, NEVADA



LEGEND

- MATCHLINE
- SET 5/8" REBAR W/AL CAP
PLS # 8895 W/REFERENCE TIES
- SET BRASS CAP IN TOP
OF CURB PLS # 8895
- 57 LOT NUMBER
- [P] PRIVATE STREETS
- [2] BLOCK NUMBER



Job Number	Scale	Date	Appr.	Date
511301	AS SHOWN			
5013	1:50/MI-3	AUGUST 28, 2008		
DRAWN BY: J. B. ...		REVISIONS		
CHECKED BY: J. B. ...		No.	Date	Date
DATE: AUGUST 28, 2008				

2770 Corporate Center
Suite 100
Henderson, Nevada 89074
Telephone: 702/763-7275
Fax: 702/763-7200

ENGINEERING - PLANNING - SURVEYING - CONSTRUCTION SERVICES

MONUMENT TIE MAP
FOR
SIERRA CROSSINGS
PHASE 1
BOOK 103, PAGE 32 OF PLATS
CITY OF LAS VEGAS,
CLARK COUNTY, NEVADA