

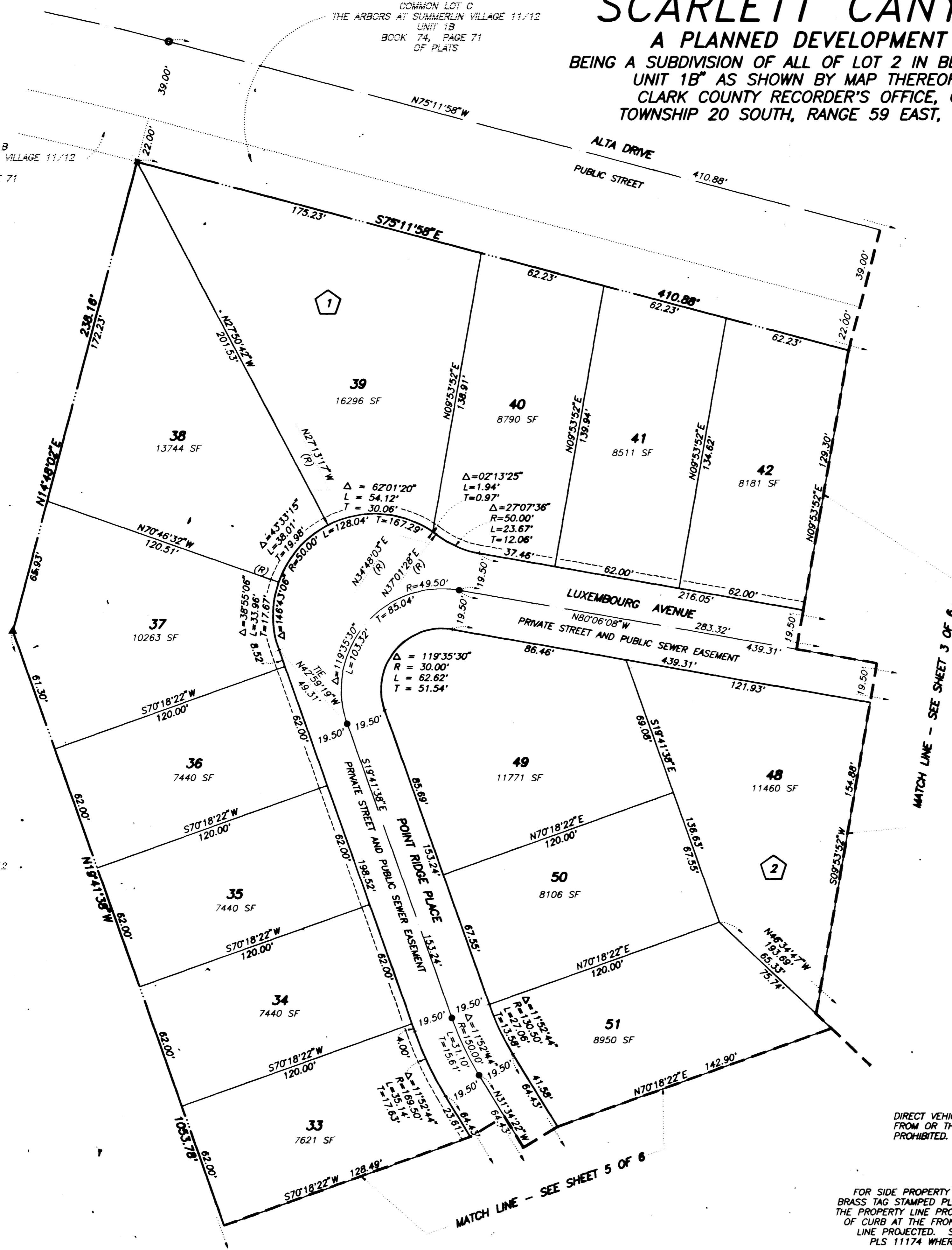
FINAL MAP OF SCARLETT CANYON at SUMMERLIN

A PLANNED DEVELOPMENT AND COMMON INTEREST COMMUNITY
BEING A SUBDIVISION OF ALL OF LOT 2 IN BLOCK A OF "THE ARBORS AT SUMMERLIN VILLAGE 11/12 - UNIT 1B" AS SHOWN BY MAP THEREOF ON FILE IN BOOK 74, PAGE 71 OF PLATS IN THE CLARK COUNTY RECORDER'S OFFICE, CLARK COUNTY, NEVADA, LYING WITHIN SECTION 36, TOWNSHIP 20 SOUTH, RANGE 59 EAST, M.D.M., CITY OF LAS VEGAS, CLARK COUNTY, NEVADA

COMMON LOT B
THE ARBORS AT SUMMERLIN VILLAGE 11/12
UNIT 1B
BOOK 74, PAGE 71
OF PLATS

COMMON LOT C
THE ARBORS AT SUMMERLIN VILLAGE 11/12
UNIT 1B
BOOK 74, PAGE 71
OF PLATS

LOT 1
THE ARBORS AT SUMMERLIN VILLAGE 11/12
UNIT 1B
BOOK 74, PAGE 71
OF PLATS



SEE SHEET 2 FOR
KEY MAP AND
BASIS OF BEARINGS

LEGEND

- SET 5/8" REBAR AND ALUMINUM CAP STAMPED PLS 11174 W/ALUMINUM REFERENCE TIES IN TOP OF CURB
- × CALCULATED POINT
- 51 LOT NUMBER
TOTAL RESIDENTIAL LOTS = 73
TOTAL COMMON LOTS = 4
- ② BLOCK NUMBER
- STREET CENTERLINE
- - - MATCH LINE
- SUBDIVISION BOUNDARY LINE
- LOT LINE
- 4.00' 4.00' WIDE PRIVATE SIDEWALK EASEMENT
- LOCATION OF MONUMENT TO BE SET PER BOOK 74, PAGE 71 OF PLATS
- ▲ SET 5/8" REBAR AND ALUMINUM CAP STAMPED PLS 11174

NOTE:
DIRECT VEHICULAR ACCESS TO ALTA DRIVE FROM OR THROUGH ABUTTING LOTS IS PROHIBITED.

NOTE:
FOR SIDE PROPERTY LINES: SET CONCRETE NAIL AND BRASS TAG STAMPED PLS 11174 IN THE REAR WALL ALONG THE PROPERTY LINE PROJECTED. SET SAWCUT IN THE BACK OF CURB AT THE FRONT OF THE LOT ON THE PROPERTY LINE PROJECTED. SET REBAR AND ALCAP STAMPED PLS 11174 WHERE THERE IS NO BLOCK WALL

MATCH LINE - SEE SHEET 5 OF 6

MATCH LINE - SEE SHEET 3 OF 6

