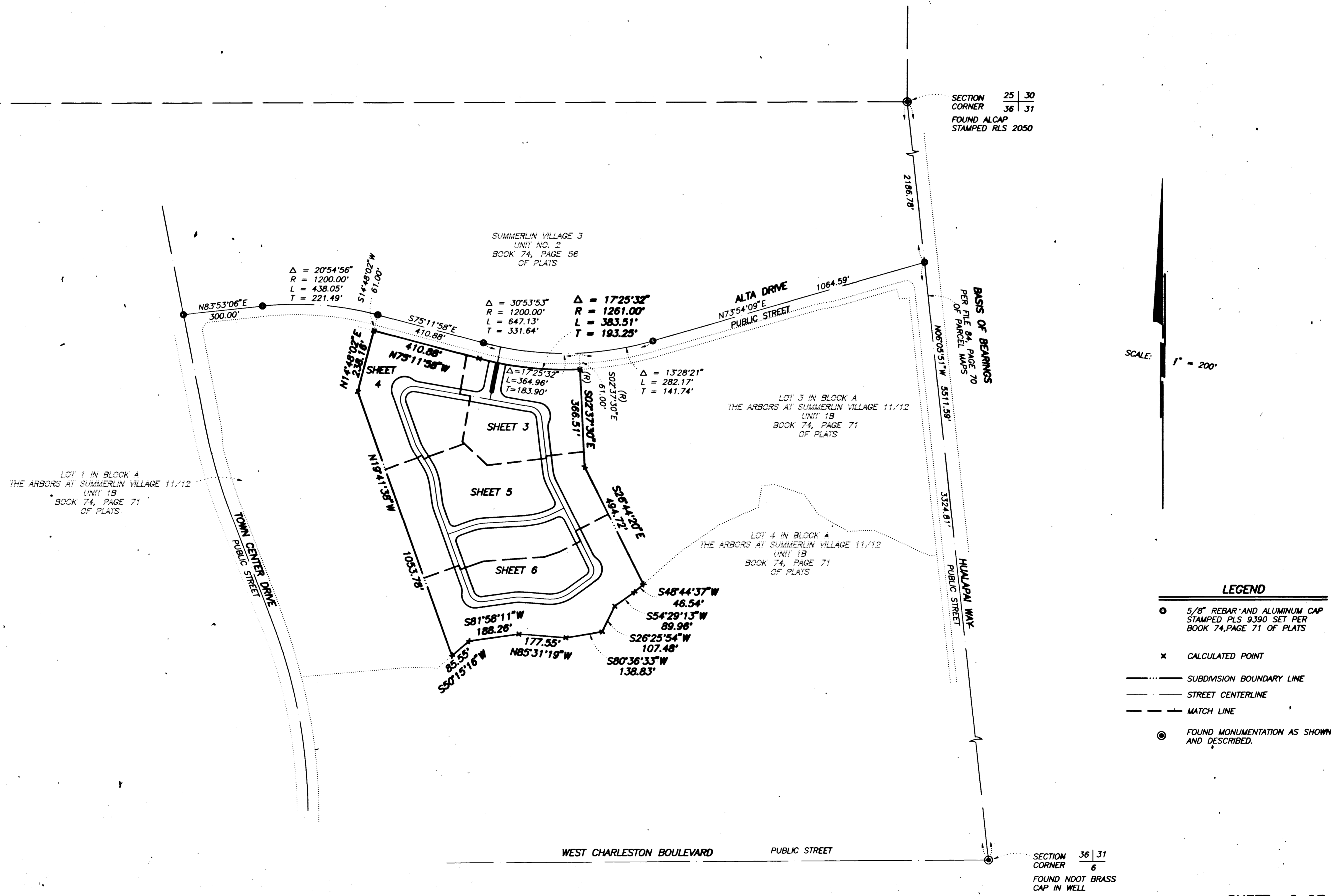


# FINAL MAP OF SCARLETT CANYON at SUMMERLIN

## A PLANNED DEVELOPMENT AND COMMON INTEREST COMMUNITY

BEING A SUBDIVISION OF ALL OF LOT 2 IN BLOCK A OF "THE ARBORS AT SUMMERLIN VILLAGE 11/12 - UNIT NO. 1B" AS SHOWN BY MAP THEREOF ON FILE IN BOOK 74, PAGE 71 OF PLATS IN THE CLARK COUNTY RECORDER'S OFFICE, CLARK COUNTY, NEVADA, LYING WITHIN SECTION 36, TOWNSHIP 20 SOUTH, RANGE 59 EAST, M.D.M., CITY OF LAS VEGAS, CLARK COUNTY, NEVADA



SECTION 25 | 30  
CORNER 36 | 31  
FOUND ALCAP  
STAMPED RLS 2050

SCALE: 1" = 200'

- LEGEND**
- 5/8" REBAR AND ALUMINUM CAP STAMPED PLS 9390 SET PER BOOK 74, PAGE 71 OF PLATS
  - × CALCULATED POINT
  - SUBDIVISION BOUNDARY LINE
  - STREET CENTERLINE
  - MATCH LINE
  - ⊙ FOUND MONUMENTATION AS SHOWN AND DESCRIBED.

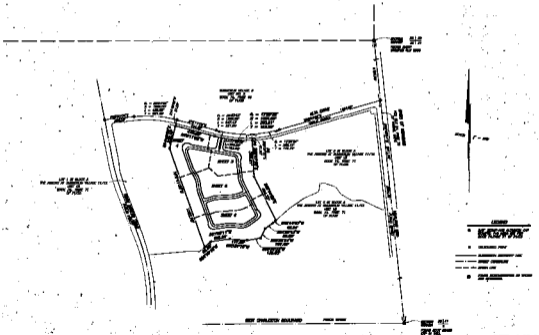
SECTION 36 | 31  
CORNER 6  
FOUND NDOT BRASS  
CAP IN WELL

4062

# FINAL MAP OF SCARLETT CANYON at SUMMERLIN

A PLANNED DEVELOPMENT AND COMMON INTEREST COMMUNITY

BEING A SUBDIVISION OF ALL OF LOT 8 IN BLOCK 4 OF THE SUBDIVISION AT SUMMERLIN VILLAGE 11/02 - CERT. NO. 107 AS SHOWN BY AND THEREOF ON FILE IN BOOK 74, PAGE 71 OF PLATS IN THE CLARK COUNTY RECORDER'S OFFICE, CLARK COUNTY, NEVADA, LYING WITHIN SECTION 36, TOWNSHIP 29 SOUTH, RANGE 20 EAST, M.D.M., CITY OF LAS VEGAS, CLARK COUNTY, NEVADA.



- LEGEND**
- EXISTING ROAD
  - PROPOSED ROAD
  - EXISTING UTILITY LINES
  - PROPOSED UTILITY LINES
  - EXISTING STORMWATER SYSTEM
  - PROPOSED STORMWATER SYSTEM