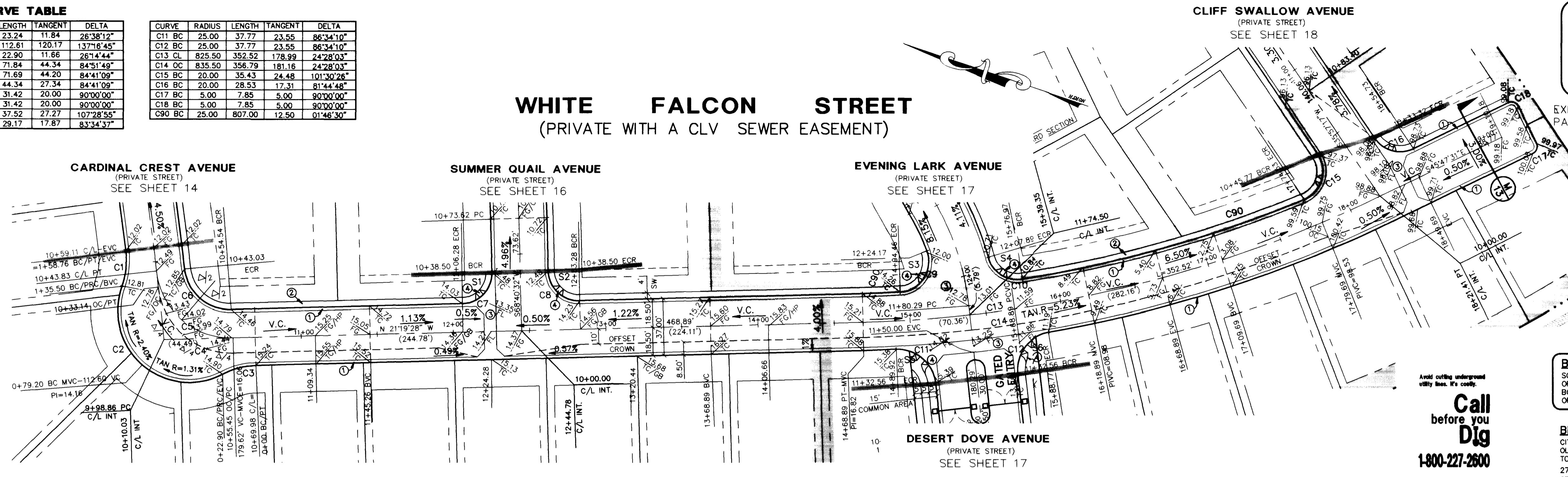


**CURVE TABLE**

CURVE	RADIUS	LENGTH	TANGENT	DELTA
C1 BC	50.00	23.24	11.84	26.381°
C2 BC	47.00	112.81	120.17	137°16'45"
C3 BC	50.00	22.90	11.86	26°14'44"
C4 OC	48.50	71.84	44.34	84°51'49"
C5 CL	48.50	71.69	44.20	84°41'09"
C6 BC	30.00	44.34	27.34	84°41'09"
C7 BC	20.00	31.42	20.00	90°00'00"
C8 BC	20.00	31.42	20.00	90°00'00"
C9 BC	20.00	37.52	27.27	107°28'59"
C10 BC	20.00	29.17	17.87	83°34'37"

CURVE	RADIUS	LENGTH	TANGENT	DELTA
C11 BC	25.00	37.77	23.55	88°34'10"
C12 BC	25.00	37.77	23.55	88°34'10"
C13 CL	825.50	352.52	178.99	24°28'03"
C14 OC	835.50	358.79	181.16	24°28'03"
C15 BC	20.00	35.43	24.48	101°30'26"
C16 BC	20.00	28.53	17.31	81°44'48"
C17 BC	5.00	7.85	5.00	90°00'00"
C18 BC	5.00	7.85	5.00	90°00'00"
C19 BC	25.00	807.00	12.50	01°46'30"

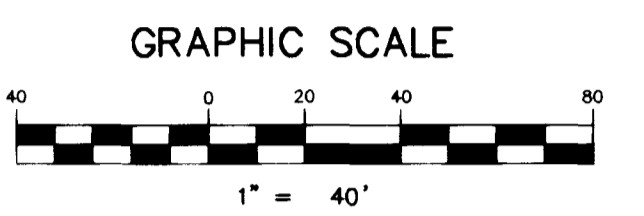
**WHITE FALCON STREET**  
(PRIVATE WITH A CLV SEWER EASEMENT)



- CONSTRUCTION NOTES:**
- CONSTRUCT "L" CURB & GUTTER PER SIS DWG # S-47
  - CONSTRUCT SIDEWALK PER SIS DWG # S-72
  - CONSTRUCT CROSS GUTTER PER SIS # 64
  - CONSTRUCT SIDEWALK RAMP PER SIS DWG # 77

**SIDEWALK RAMP DATA**  
(CASE 1)

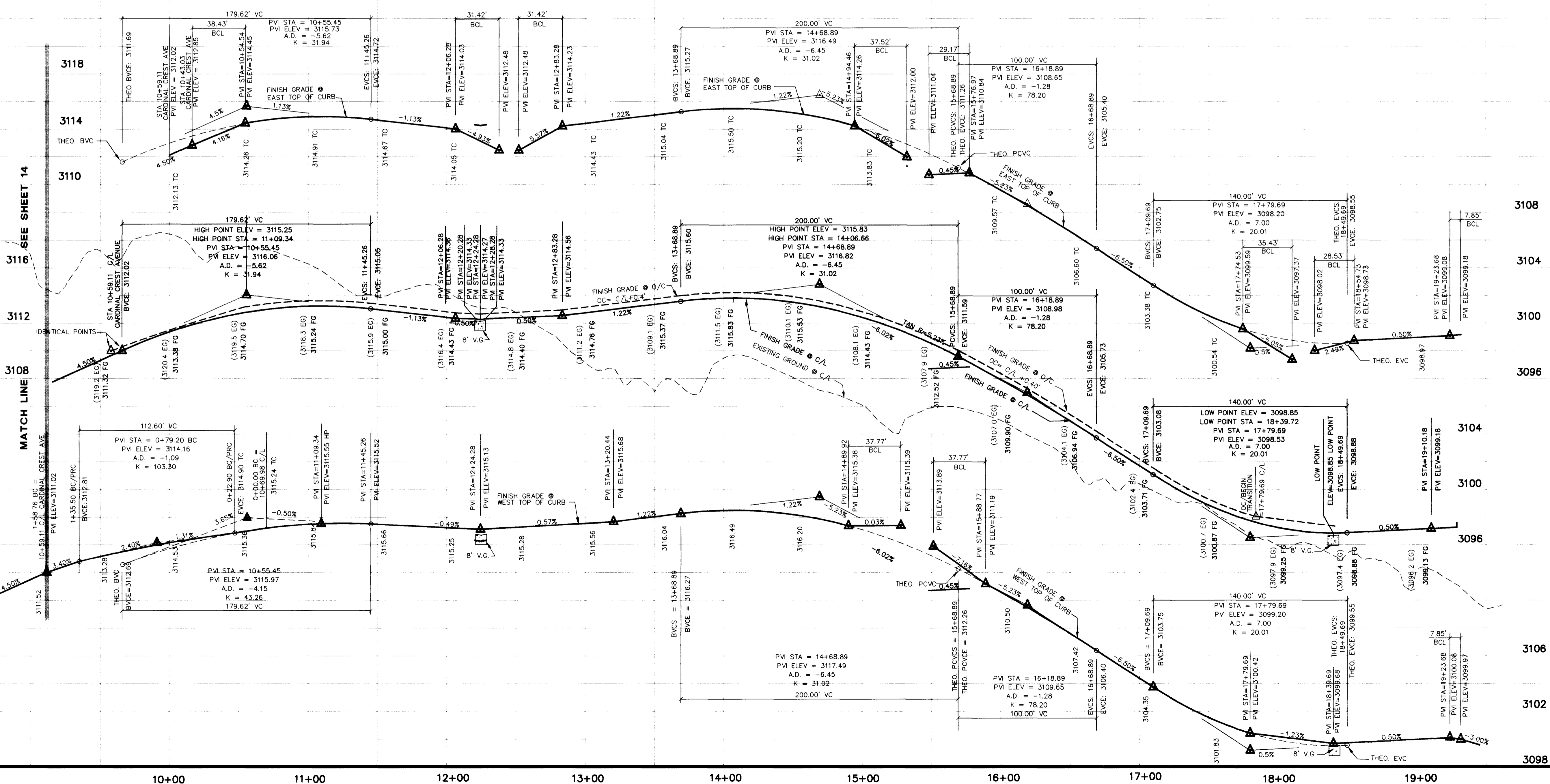
NO.	A	B
S1	15.0'	4.5'
S2	21.5'	4.5'
S3	21.5'	4.5'
S4	8.0'	8.0'
S5	8.0'	8.0'
S6	21.5'	4.5'



**BASIS OF BEARINGS**  
SOUTH 21°19'28" EAST, BEING THE BEARING OF THE CENTERLINE OF SAGEBERRY DRIVE AS SHOWN BY MAP THEREOF ON FILE IN BOOK 78, PAGE 62 OF PLATS IN THE CLARK COUNTY RECORDER'S OFFICE, CLARK COUNTY, NEVADA.

**BENCHMARK**  
CITY OF LAS VEGAS BENCHMARK  
0400054 RWET & PLATE IN TOP OF CURB NW SIDE OF TOWN CENTER DRIVE & SOUTH CIRCLE ISLAND.  
2726.19 SUMMERLIN DATUM  
2728.37 NAVD DATUM (831.6074 m)  
\*SUMMERLIN DATUM USED

**Call before you Dig**  
1-800-227-2600



**WOODSIDE HOMES**  
3500 WOODSIDE HOMES BLVD  
LAS VEGAS, NEVADA 89102  
(702) 888-7800

**STREET PLAN & PROFILE**  
**WHITE FALCON STREET**

**QUAIL RIDGE**

DRAWN BY: FEB. 1998  
DESIGNED BY: DEC. 1997  
CHECKED BY:  
PROJECT NO.: 5280  
SCALE: 1"=40' HORIZ.  
1"=4' VERT.

SEAL  
ENGINEER  
BARRY R. THOMPSON  
7/1/98  
SHEET  
S6  
19 OF 35 SHEETS  
DRAWING NO. 1074-4552

