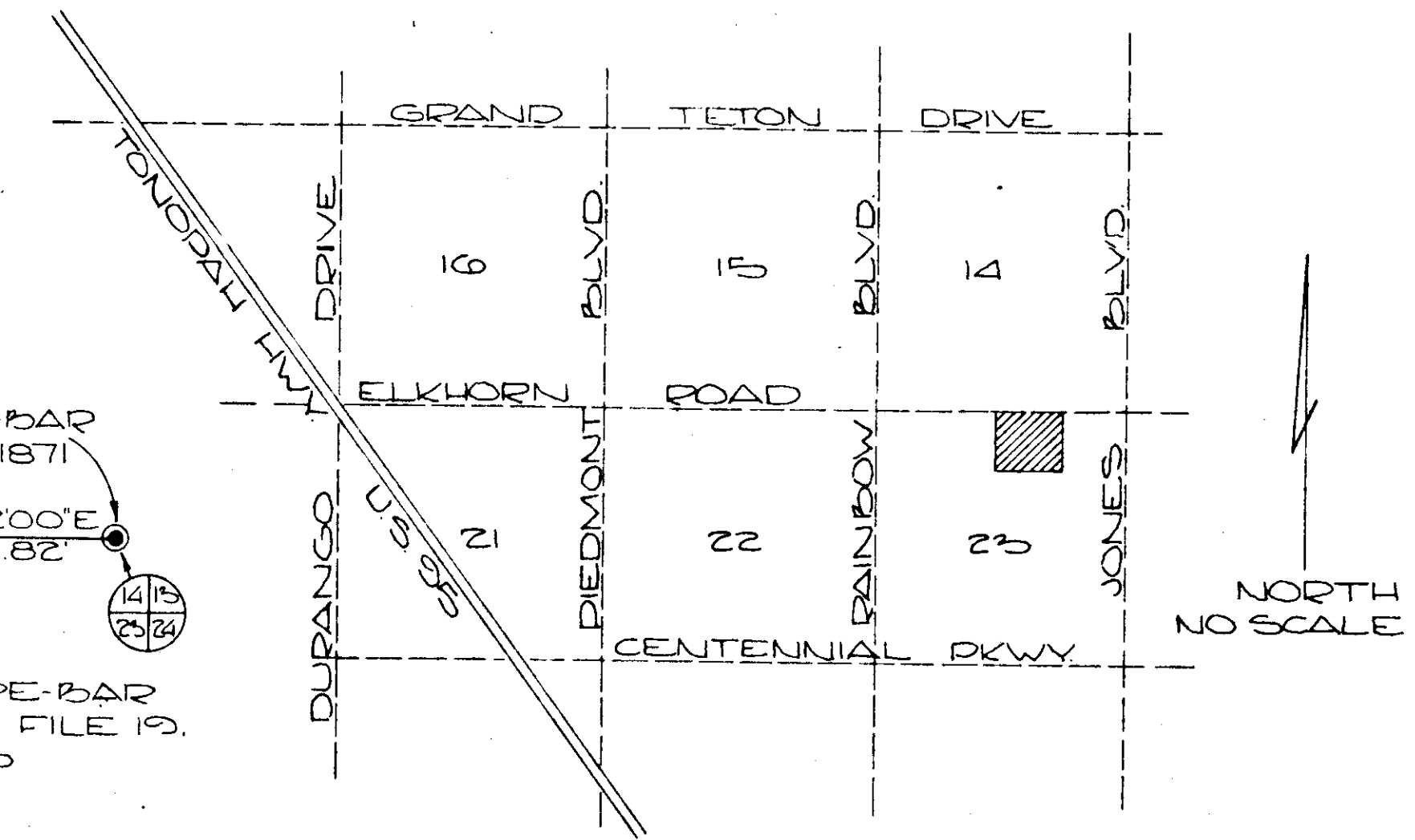
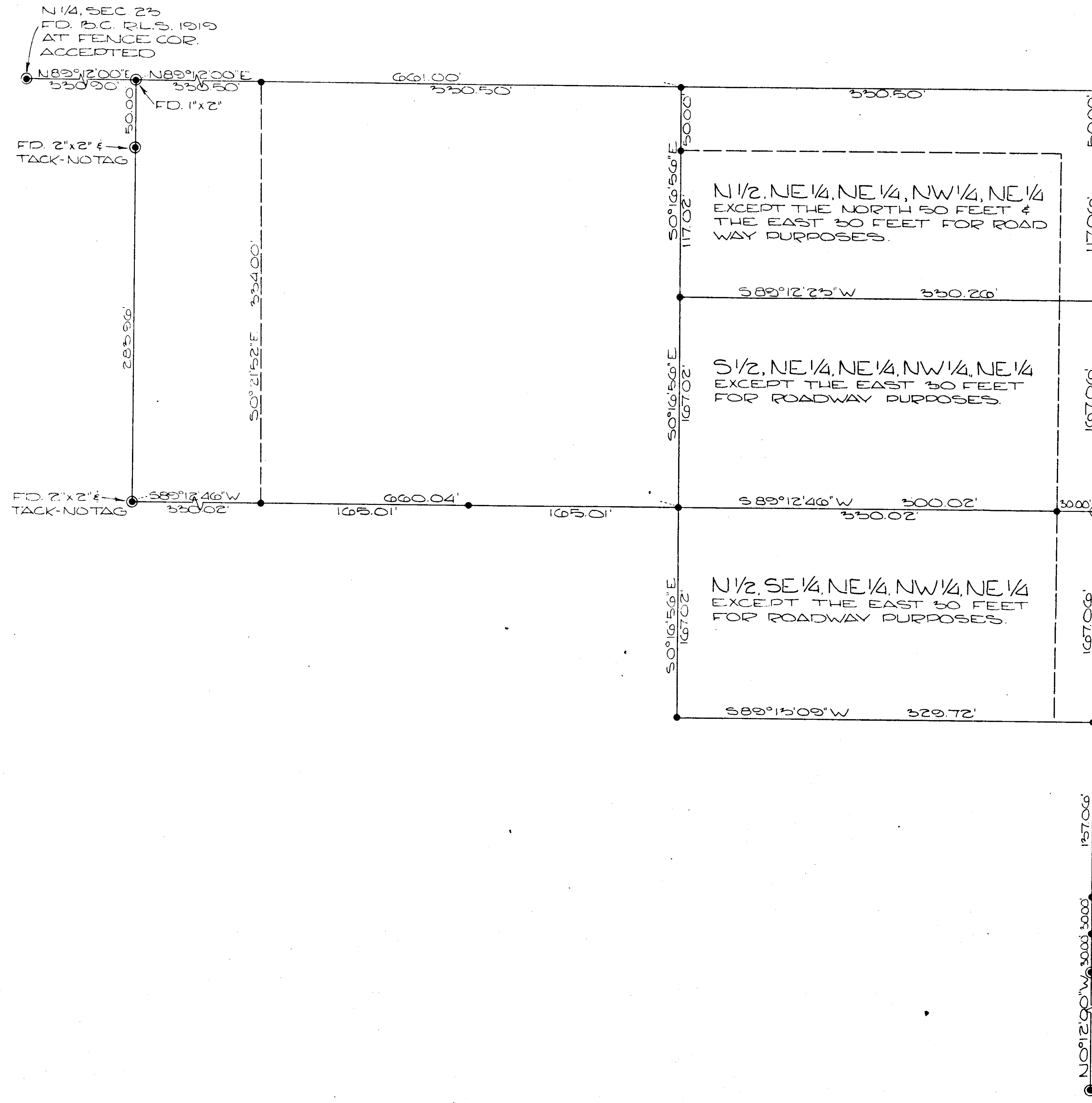


13-19



VICINITY MAP

• INDICATES SET RE-BAR

BASIS OF BEARING

THE EAST LINE OF SECTION 23 (N0°10'E) AS SHOWN IN FILE 19, PAGE 5, CLARK COUNTY RECORDERS OFFICE

CERTIFICATE

I, JAY M. RASSLER, DO HEREBY CERTIFY THAT THE SURVEY PLATTED HEREON WAS MADE UNDER MY DIRECTION AND WAS COMPLETED ON THE 30TH DAY OF JANUARY, 1971, AT THE INSTANCE OF RAINBOW VALLEY RANCHOS. THIS SURVEY IS NOT A SUBDIVISION AS DEFINED IN THE PLANNING AND ZONING LAW AS SHOWN IN THE 1945-1948 SURV. NEVADA COMPILED LAWS.

Jay M. Rassler
JAY M. RASSLER
I.R.S. 1024

<p>86717</p> <p>FILED AT THE REQUEST OF</p> <p>JAY M. RASSLER</p> <p>3-18-71 10:01 A.M.</p> <p>FILE 21 PAGE 7</p> <p>CLARK COUNTY NEVADA RECORDER</p> <p>PAUL E. HORN RECORDER</p> <p>2-50 712 gr 1</p>	<p>RESULTS OF SURVEY OF</p> <p>PART NW 1/4, NE 1/4, SECTION 23, T19S, R60E, M.D.B. & M., LA VEGAS, NEVADA, for Rainbow Valley Ranchos</p>
--	---