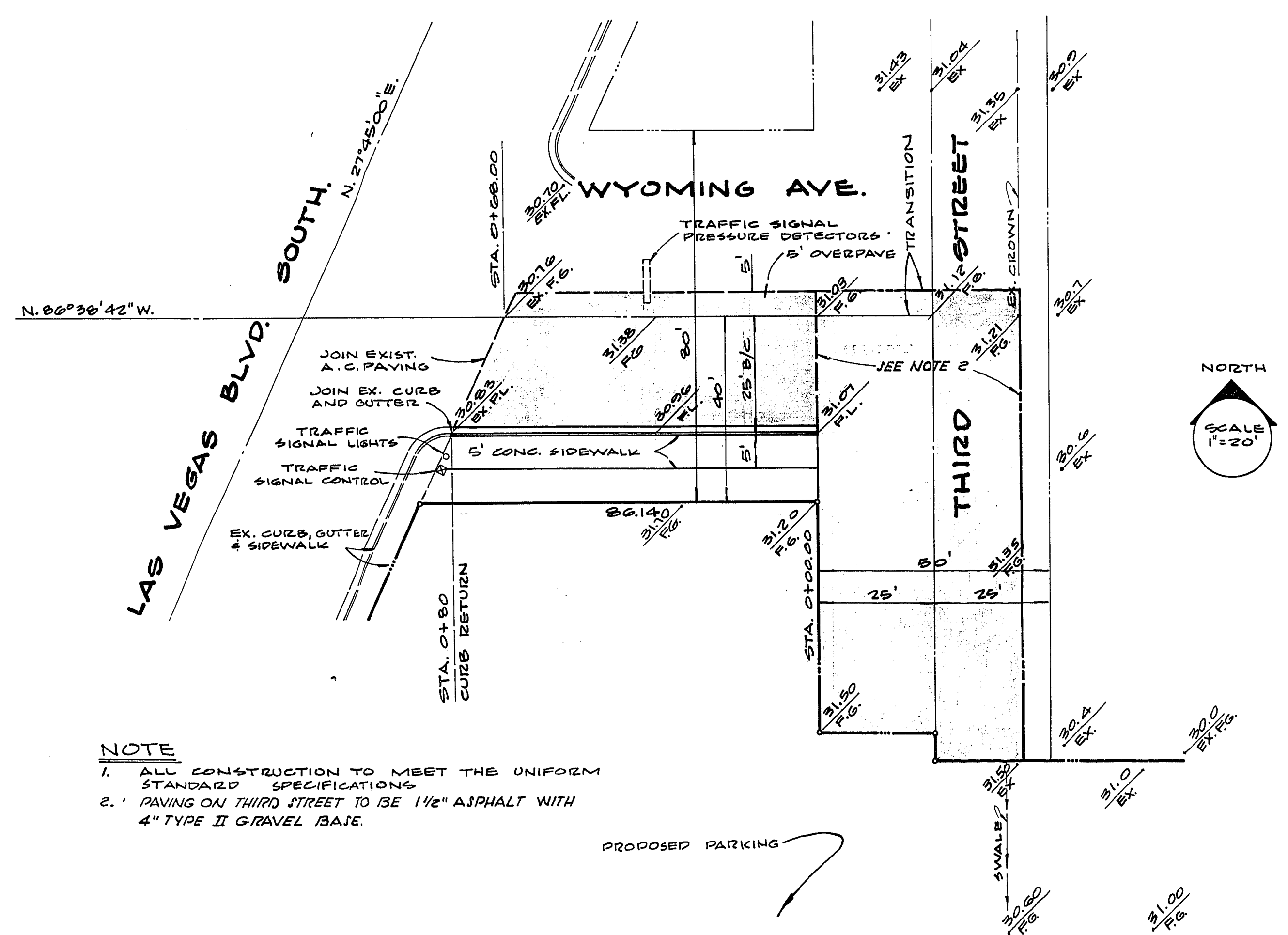


TYPICAL SECTION - WYOMING AVENUE



NOTE
 1. ALL CONSTRUCTION TO MEET THE UNIFORM STANDARD SPECIFICATIONS
 2. PAVING ON THIRD STREET TO BE 1 1/2" ASPHALT WITH 4" TYPE II GRAVEL BASE.

ESTIMATE OF QUANTITIES

2" A.C. PAVING	187 S.Y.
4" CONC. SIDEWALK	410 S.F.
"L" TYPE CURB & GUTTER	80 L.F.
REMOVE EX. A.C. PAVING	218 S.Y.

APPROVALS

[Signature] 12/14/67
 LAS VEGAS CITY ENGINEER DATE

[Signature] 12-5-67
 LAS VEGAS FIELD ENGINEER DATE

SUBMITTED BY

[Signature] 12/11/67
 GEORGE C. WALLACE DATE
 NEV. R.C.E. NO. *[Handwritten]*

REV.	DESCRIPTION	APPL.	DATE
1	RAISED GRADE ON THIRD STREET		20 DEC. 67

VOORHEIS-TRINDLE CO. OF NEV.
 2209 PARADISE ROAD LAS VEGAS, NEVADA

STREET PLAN & PROFILE
WYOMING AVE.
 (BETWEEN LAS VEGAS BLVD & 3RD ST.)

SHEET | OF 1